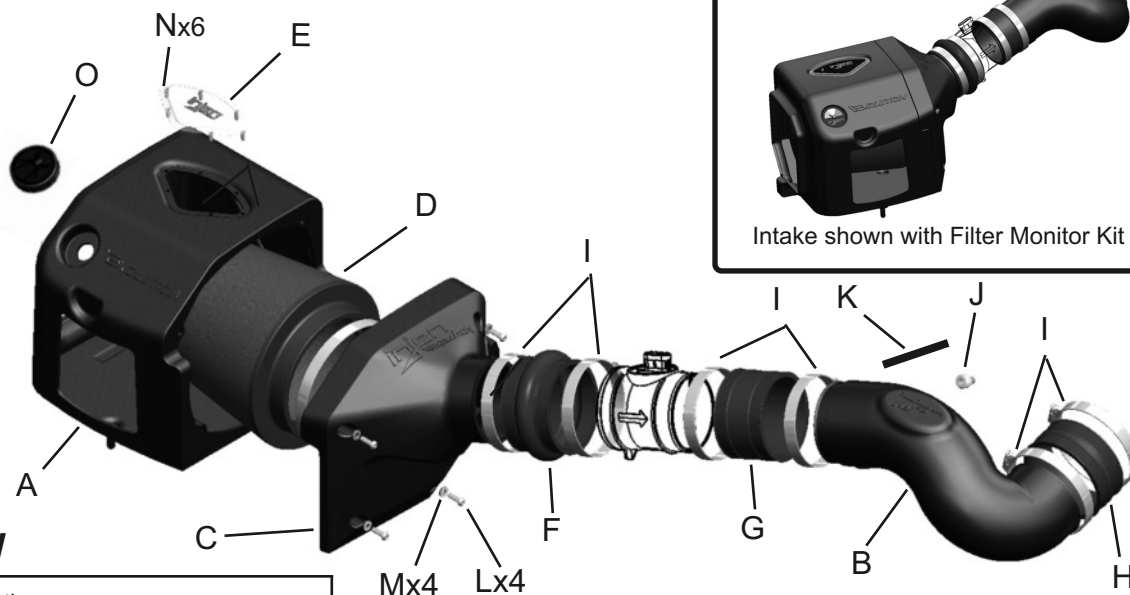




Optional Filter Monitor kit .  
Part # AC1000



## EXPLODED VIEW

Item	QTY.	P/N	Discription
A	1	15105	air box
B	1	15108	tube (07-08)
C	1	15106	plenum
D	1	1101	air filter
E	1	15122	clearvue window
F	1	3250	4" hump hose
G	1	3036	3.75" straight hose
H	1	3129	4" straight hose

I	6	4008	#64 clamps
J	1	8055	1/8" NPT fitting - 3/8" OD fitting
K	1	3091	8mm hose @8.5"
L	4	6100	M6x20mm screws
M	4	8047	rubberized washers
N	6	6109	Self retaining lock washers
O	1	6111	Filter Monitor Plug

## Vehicle Applications:

**Make: Cadillac**  
Model: Escalade, Escalade EXT, Escalade ESV  
Year: 2007-2008  
Engine: 6.2L V8

**Make: Chevrolet**  
Model: Avalanche  
Year: 2007-2008  
Engine: 5.3L, 6.0L V8

Model: Silverado  
Year: 2007-2008  
Engine: 4.8L, 5.3L, 6.0L V8

Model: Suburban  
Year: 2007-2008  
Engine: 5.3L, 6.0L V8

Model: Tahoe  
Year: 2007-2008  
Engine: 4.8L, 5.3L V8

**Make: GMC**  
Model: Sierra 1500  
Year: 2007-2008  
Engine: 4.8L, 5.3L, 6.0L V8

Model: Sierra 1500 Denali  
Year: 2007-2008  
Engine: 6.2L V8

Model: Yukon  
Year: 2007-2008  
Engine: 4.8L, 5.3L, 6.0L V8

Model: Yukon XL  
Year: 2007-2008  
Engine: 5.3L, 6.0L V8

Model: Yukon Denali, Yukon XL Denali  
Year: 2007-2008  
Engine: 6.2L V8

Report any defective or missing parts to the authorized Injen dealer you purchased this product from. Before installing any parts of this system, please read the instructions thoroughly. If you have any questions regarding installation, please contact your Injen Technology dealer. Installation DOES require some mechanical skills. A qualified mechanic is always recommended.

A Limited Lifetime Warranty to the original purchaser against defects in material and workmanship on all Injen intake systems excluding the filter element. Any and all warranty coverage is limited to the repair or replacement of the defective part only, at Injen Technology's discretion. The warranty does not cover incidental or consequential damages, nor does it cover the cost of installation or removal of the defective part or its replacement. Proof of purchase is required.

## IMPORTANT:

The following vehicles are excluded from this Executive order number. Look for the following engine test group numbers listed below.

### The following vehicles will not be CARB exempt:

2007 Silverado/Sierra Hybrid SULEV Engine test group number - 7GMXT05.33386

## Note:

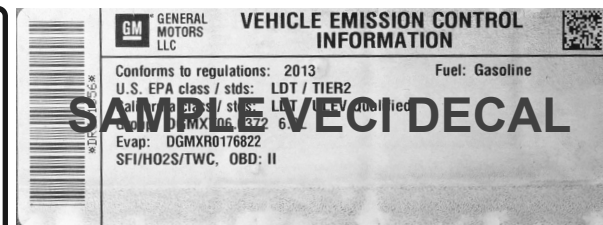
Vehicles excluded from this Executive Order Number are not legal for sale or for use on any vehicle registered with the California Department of Motor Vehicle and any other state adopting to California emissions standards. The use of this device on public streets or highways is strictly pro-hibited on vehicles in California and others states that have adopted California emission regulations. Legal in California for use on race vehicles only.

## Note:

***The C.A.R.B. Exempt sticker must be attached under the hood in a manner that is easily viewed by an emissions inspector.***

## Vehicle Emission Control Information:

If your OE air box has a Vehicle Emission Control Information decal affixed to it, removing your OE air box will also remove the Vehicle Emission Control Information decal. A visible VECI decal must be visible in the engine compartment to be CARB compliant. The VECI decal must be affixed to a component that is not easily removable. You can purchase a replacement VECI decal from your local dealership. Failure to have a visible Vehicle Emissions Control information decal will prevent the vehicle from passing a smog test. Sample Vehicle Emission Control Information decal shown



# Instruction Manual P/N:EVO7101

**NOTE:** This intake kit may not work on vehicles with the following aftermarket modifications.

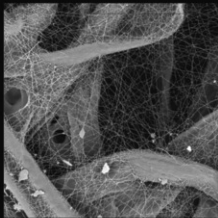
- Aftermarket Intercooler piping
- Aftermarket intercooler
- Turbo upgrade
- Modified body panels
- Suspension & Chassis modifications

The SuperNano-Web filter media is a dry synthetic media that outperforms the competition. The media itself is a proprietary base blend of synthetics and cellulose. Cellulose fibers are larger than synthetic fibers, and have larger spaces between the fibers, causing contaminants to load in the depth of the media and plug the airflow path. This creates higher restriction levels and less capacity. The synthetic fibers in the SuperNano-Web media are submicron in diameter and have small interior fiber spaces, which result in more contaminants being captured on the surface of the media. This can help keep restriction levels low as the filter loads with dirt and containments

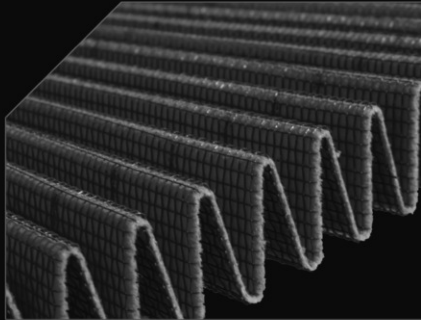
**injen**  
TECHNOLOGY



Existing media without  
Injen SuperNano-Web Technology



Superior Injen  
SuperNano-Web Technology



A New Generation of Filters  
Designed to perform and  
filter like no other

INJEN SuperNano-Web Technology

If you look at the picture to the left, you can see the Nano-fiber web on top of our base media. That web, or SuperNano-Web as we like to call it, helps trap smaller particles and protect your engine.

## **To Clean your filter:**

Carefully remove the filter from the housing. Once removed, wipe down the housing using a clean shop towel, being careful not to knock any dirt and/or debris in the air inlet. Your filters can be cleaned by carefully vacuuming the filter media from the dirty side, or by holding the filter with one hand and carefully blowing the filter media at a 45-degree angle from the clean side using low-pressure shop air (15-20 lbs. psi).

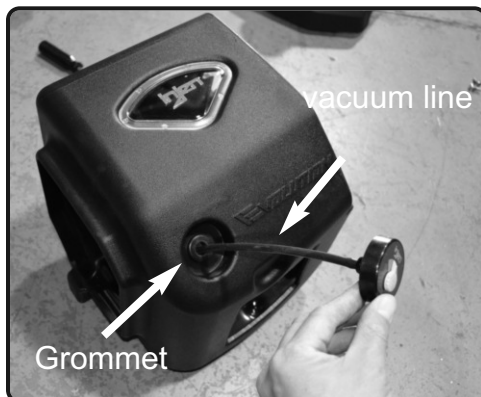
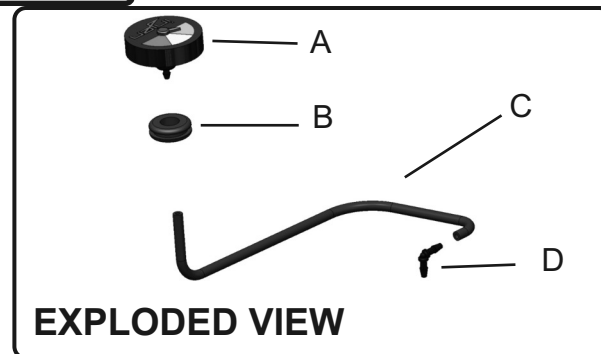
**\*IT IS IMPORTANT TO NOT USE ANY CLEANERS  
ON THE SUPERNANO-WEB MEDIA OR APPLY ANY  
OIL!!!**

**NOTE: DISCONNECT BATTERY BEFORE INSTALLATION!!!**



## Optional: Filter Monitor Kit P/N: AC1000

Item	QTY.	P/N	Discription
A	1	15040	Filter Monitor Gauge
B	1	3198	3mm hose @ 15" Length
C	1	8026	Grommet
D	1	8057	5/32" 90 deg. Elbow Fitting



**1.** Connect the 3mm vacuum line to the Filter Monitor. Place the grommet into the 3/4" in the air box. Then run the 3mm vacuum line through the grommet.



**2.** Rotate the Filter Monitor as desired.



**2.** Drill a 0.1890" hole on top of the filter and firmly push the supplied 5/32 90 degree fitting into the hole.



**3.** Connect the 3 mm Vacuum line to the 5/32" fitting on the top of the filter.

- Optimize filter service intervals
- Stop over servicing
- Reduce under servicing
- Minimize unnecessary labor

### Features:

Injen's Filter Monitor allows you to quickly inspect the filters performance by monitoring the restriction level of the filter. As dirt and debris builds up onto the filter media, a restriction is created causing a vacuum affect to pull the service indicator needle built into the Injen Filter Monitor. As the filter goes through its service, the service indicator needle will move from green, yellow and red depending on the filters condition. No need to remove the filter from the intake kit or engine bay to inspect the filter. Saving you wasteful time and money from unnecessary service and filter replacements.

# Instruction Manual P/N:EVO7101



**1.** Stock intake system shown.



**2.** Pull the engine cover off the intake manifold.



**3.** Use a 8mm nut driver and loosen the clamp on the intake air duct from the air box assembly and clamp on throttle body.



**4.** Unplug the the harness off the MAF sensor.



**5.** Loosen the clamp using 8mm nut driver. Remove the MAF sensor from air box. Remove the factory coupler from MAF sensor.



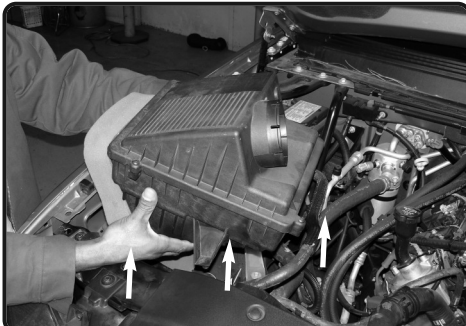
**6.** Unclip the coolant lines underneath the air duct from the tab



**7.** Disconnect the crank case ventilation line from the air duct resonator section located on top of the intake manifold. You will need to unclip a plastic lock in order for you to remove this line from the valve cover.



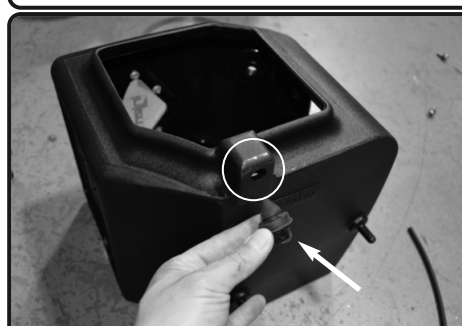
**8.** You may now remove the entire air duct



**9.** Remove the entire air box assembly



**10.** Remove the grommet spacer from the factory air box.



**11.** Now install the grommet spacer into the new injen air box and secure.



**12.** Push the Filter Monitor Plug into the Filter Monitor pod on the Injen air box if you are not using the Filter Monitor Kit P/N AC1000

# Instruction Manual P/N:EVO7101



**13.** Place the 3mm vacuum cap on top of the Injen filter if you are not using the optional Filter Monitor Kit P/N AC1000



If not using Filter Monitor kit P/N AC1000, skip to figure 16

**14.** Install the provided grommet to the hole on air box, now attach the 3mm vacuum line to the filter minder and install the filter minder to the air box. Place hose through the grommet.

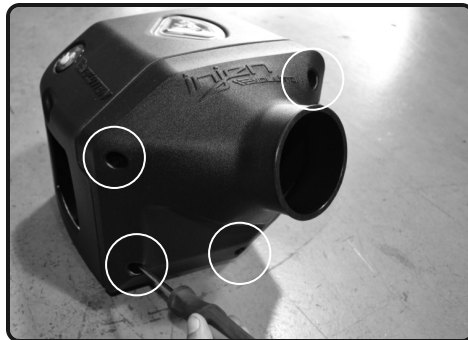


If not using Filter Monitor kit P/N AC1000, skip to figure 16

**15.** Attach the other end of the 3mm vacuum line to the filter fitting and secure.



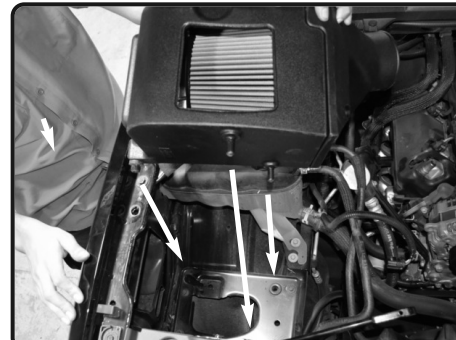
**16.** Install the filter to the plenum, secure and tighten using 8mm nut driver.



**17.** Now secure the plenum using provided 4 M6 screws and rubberized washers. Secure and tighten.



**18.** Install the the 4" and 3.75" straight hoses to the tube with clamps provided.



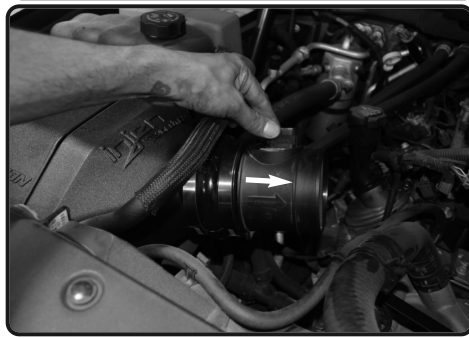
**19.** Now install the air box assembly into the vehicle. Position the tabs to seat like OEM box.



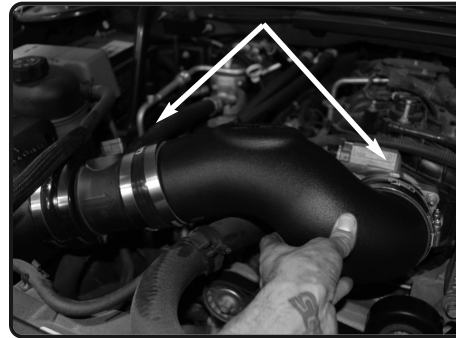
**20.** Air box assembly in place.



**21.** Install the 4" hump hose to the plenum. Tighten clamp on plenum only.



**22.** Install the MAF sensor to the hump hose. ***Make sure Arrow on sensor is going in direction towards the throttle body.***

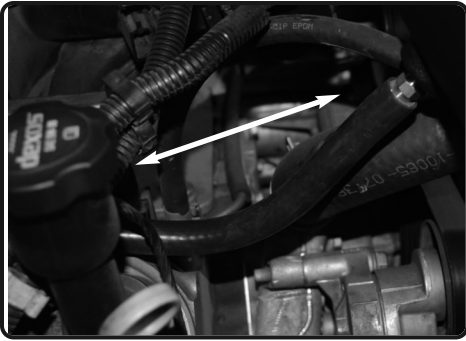


**23.** Install the intake tube. Position for best fit, secure and tighten all clamps using 8mm nut driver.



**24.** Re-connect the MAF sensor harness.





**25.** Install the provided 8mm hose to the crank case vent tube on engine, and connect the other end to the fitting on the intake tube.

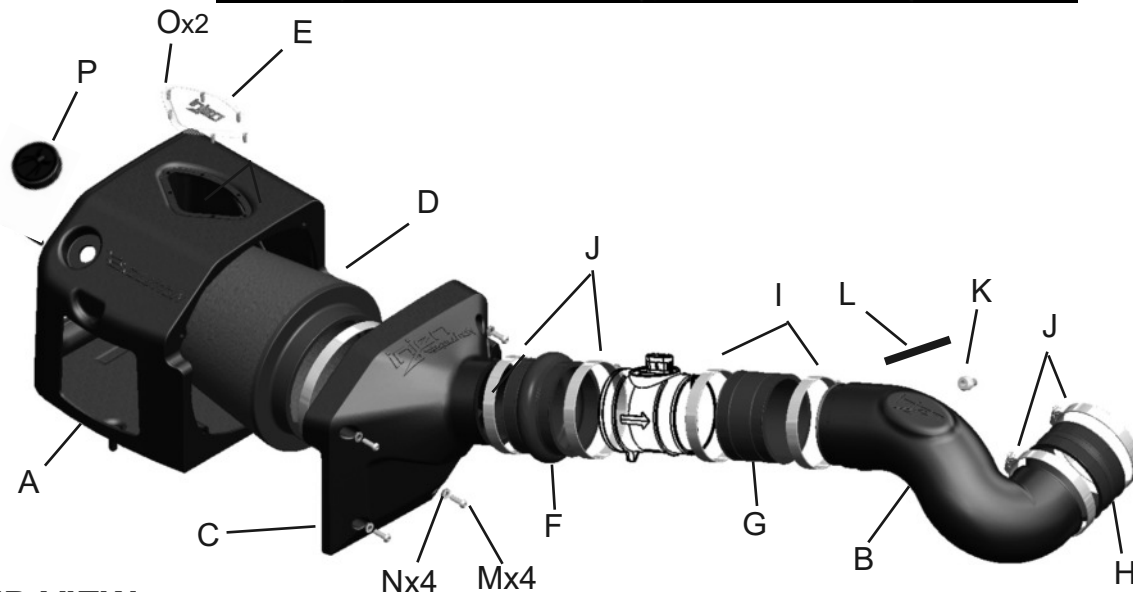


Congratulations! You have just completed the installation of this intake system. Periodically, check the alignment of the intake, normal wear and tear can cause nuts and bolts to come loose. **Note: Check clearance and adjust if needed! Failure to check the alignment and adjust the intake can cause damage that will void the warranty. Injen Technology is not responsible for any damages caused by/from improper installation.**

## Test Drive:

1. With the transmission in neutral or park and the parking brake engaged, start the engine. Listen for air leaks or odd noises. If air leaks are detected, secure hoses and connections. For any odd noises, inspect entire system for cause and adjust intake as needed. The Injen intake will function identically to the factory system but will be louder and more powerful.
2. Perform a road test. Listen for odd noises or rattles and fix as necessary.
3. If there are no issues, continue to enjoy your added performance from the Injen performance Intake kit.
4. Injen Technology recommends you periodically check clearance and adjust if needed! Failure to check the alignment and adjust the intake can cause damage that will void the warranty. Injen Technology is not responsible for any damages caused by/from improper installation.

1. Upon completion of the installation, reconnect the negative battery terminal before you start the engine.
  2. Align the entire intake system for the best possible fit. Once the intake has been properly fitted continue to tighten all nuts, bolts and clamps.
  3. Periodically, recheck the alignment of the intake system and make sure there is proper clearance around and along the length of the intake. Failure to follow proper maintenance procedures may cause damage to the intake and will void the warranty.
  4. Start the engine and listen carefully for any odd noises, rattles and/or air leaks prior to taking it for a test drive. If any problems arise go back and check the vacuum lines, hoses and clamps that maybe causing leaks or rattles and correct the problem.
  5. Check the filter for excessive dirt build up. Clean or replace the filter with an original Injen filter (can be bought on-line at "injenonline.com").
- Congratulations! You have just completed the installation of the best intake system sold on the market. Enjoy the added power and performance of your new intake system.



## EXPLODED VIEW

Item	QTY.	P/N	Discription				
A	1	15105	air box	I	2	4005	#56 clamps
B	1	15108	tube (07-08)	J	4	4006	#64 clamps
C	1	15106	plenum	K	1	8055	1/8" NPT fitting - 3/8" OD fitting
D	1	1101	air filter	L	1	3091	8mm hose @8.5"
E	1	15139	clear window	M	4	6100	M6x20mm screws
F	1	3250	4" hump hose	N	4	8047	rubberized washers
G	1	3036	3.75" straight hose	O	2	6109	Self retaining lock washers
H	1	3129	4" straight hose	P	1	6111	Filter Monitor Plug

Report any defective or missing parts to the authorized Injen dealer you purchased this product from. Before installing any parts of this system, please read the instructions thoroughly. If you have any questions regarding installation, please contact your Injen Technology dealer. Installation DOES require some mechanical skills. A qualified mechanic is always recommended.

A Limited Lifetime Warranty to the original purchaser against defects in material and workmanship on all Injen intake systems excluding the filter element. Any and all warranty coverage is limited to the repair or replacement of the defective part only, at Injen Technology's discretion. The warranty does not cover incidental or consequential damages, nor does it cover the cost of installation or removal of the defective part or its replacement. Proof of purchase is required.

## Vehicle Applications:

**Make: Cadillac**  
**Model: Escalade, Escalade EXT, Escalade ESV**  
**Year: 2007-2008**  
**Engine: 6.2L V8**

**Make: Chevrolet**  
**Model: Avalanche**  
**Year: 2007-2008**  
**Engine: 5.3L, 6.0L V8**

**Model: Silverado**  
**Year: 2007-2008**  
**Engine: 4.8L, 5.3L, 6.0L V8**

**Model: Suburban**  
**Year: 2007-2008**  
**Engine: 5.3L, 6.0L V8**

**Model: Tahoe**  
**Year: 2007-2008**  
**Engine: 4.8L, 5.3L V8**

**Make: GMC**  
**Model: Sierra 1500**  
**Year: 2007-2008**  
**Engine: 4.8L, 5.3L, 6.0L V8**

**Model: Sierra 1500 Denali**  
**Year: 2007-2008**  
**Engine: 6.2L V8**

**Model: Yukon**  
**Year: 2007-2008**  
**Engine: 4.8L, 5.3L, 6.0L V8**

**Model: Yukon XL**  
**Year: 2007-2008**  
**Engine: 5.3L, 6.0L V8**

**Model: Yukon Denali, Yukon XL Denali**  
**Year: 2007-2008**  
**Engine: 6.2L V8**



## IMPORTANT:

The following vehicles are excluded from this Executive order number. Look for the following engine test group numbers listed below.

### The following vehicles will not be CARB exempt:

2007 Silverado/Sierra Hybrid SULEV Engine test group number - 7GMXT05.33386

## Note:

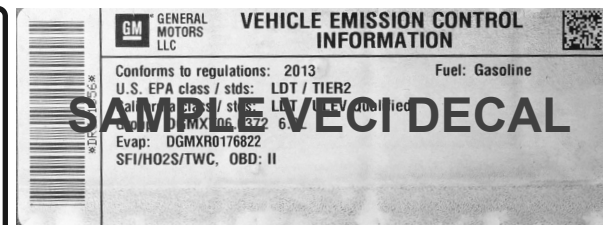
Vehicles excluded from this Executive Order Number are not legal for sale or for use on any vehicle registered with the California Department of Motor Vehicle and any other state adopting to California emissions standards. The use of this device on public streets or highways is strictly pro-hibited on vehicles in California and others states that have adopted California emission regulations. Legal in California for use on race vehicles only.

## Note:

***The C.A.R.B. Exempt sticker must be attached under the hood in a manner that is easily viewed by an emissions inspector.***

## Vehicle Emission Control Information:

If your OE air box has a Vehicle Emission Control Information decal affixed to it, removing your OE air box will also remove the Vehicle Emission Control Information decal. A visible VECI decal must be visible in the engine compartment to be CARB compliant. The VECI decal must be affixed to a component that is not easily removable. You can purchase a replacement VECI decal from your local dealership. Failure to have a visible Vehicle Emissions Control information decal will prevent the vehicle from passing a smog test. Sample Vehicle Emission Control Information decal shown



# Instruction Manual P/N:EVO7101

**NOTE:** This intake kit may not work on vehicles with the following aftermarket modifications.

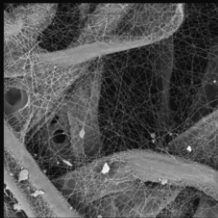
- Aftermarket Intercooler piping
- Aftermarket intercooler
- Turbo upgrade
- Modified body panels
- Suspension & Chassis modifications

The SuperNano-Web filter media is a dry synthetic media that outperforms the competition. The media itself is a proprietary base blend of synthetics and cellulose. Cellulose fibers are larger than synthetic fibers, and have larger spaces between the fibers, causing contaminants to load in the depth of the media and plug the airflow path. This creates higher restriction levels and less capacity. The synthetic fibers in the SuperNano-Web media are submicron in diameter and have small interior fiber spaces, which result in more contaminants being captured on the surface of the media. This can help keep restriction levels low as the filter loads with dirt and containments

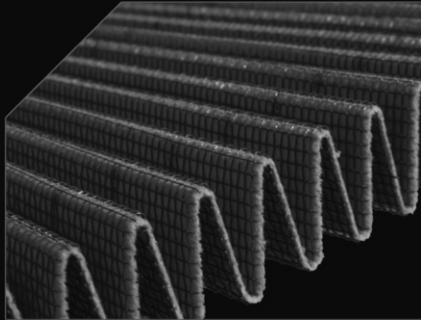
**injen**  
TECHNOLOGY



Existing media without  
Injen SuperNano-Web Technology



Superior Injen  
SuperNano-Web Technology



A New Generation of Filters  
Designed to perform and  
filter like no other

INJEN SuperNano-Web Technology

If you look at the picture to the left, you can see the Nano-fiber web on top of our base media. That web, or SuperNano-Web as we like to call it, helps trap smaller particles and protect your engine.

## **To Clean your filter:**

Carefully remove the filter from the housing. Once removed, wipe down the housing using a clean shop towel, being careful not to knock any dirt and/or debris in the air inlet. Your filters can be cleaned by carefully vacuuming the filter media from the dirty side, or by holding the filter with one hand and carefully blowing the filter media at a 45-degree angle from the clean side using low-pressure shop air (15-20 lbs. psi).

**\*IT IS IMPORTANT TO NOT USE ANY CLEANERS  
ON THE SUPERNANO-WEB MEDIA OR APPLY ANY  
OIL!!!**

**NOTE: DISCONNECT BATTERY BEFORE INSTALLATION!!!**

# Instruction Manual P/N:EVO7101



**1.** Stock intake system shown.



**2.** Pull the engine cover off the intake manifold.



**3.** Use a 8mm nut driver and loosen the clamp on the intake air duct from the air box assembly and clamp on throttle body.



**4.** Unplug the the harness off the MAF sensor.



**5.** Loosen the clamp using 8mm nut driver. Remove the MAF sensor from air box. Remove the factory coupler from MAF sensor.



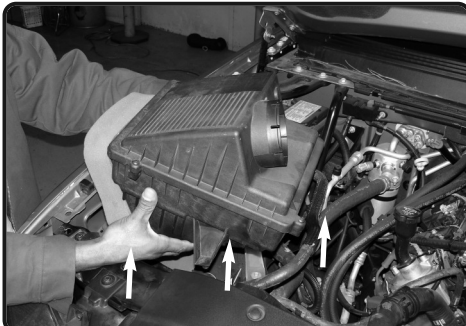
**6.** Unclip the coolant lines underneath the air duct from the tab



**7.** Disconnect the crank case ventilation line from the air duct resonator section located on top of the intake manifold. You will need to unclip a plastic lock in order for you to remove this line from the valve cover.



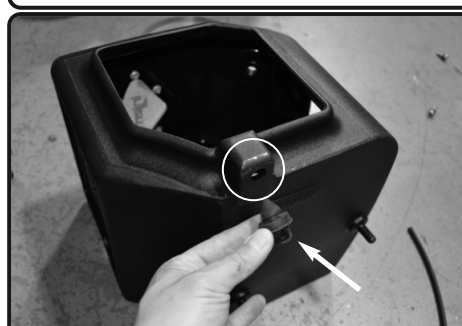
**8.** You may now remove the entire air duct



**9.** Remove the entire air box assembly



**10.** Remove the grommet spacer from the factory air box.

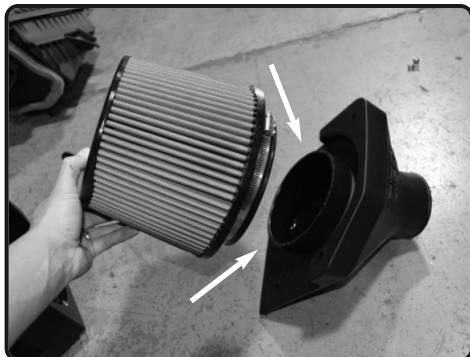


**11.** Now install the grommet spacer into the new injen air box and secure.

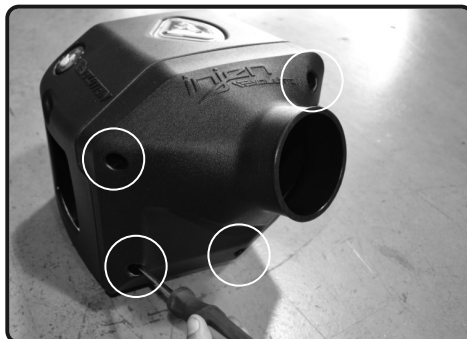


**12.** Push the Filter Monitor Plug into the Filter Monitor pod on the Injen air box if you are not using the Filter Monitor Kit P/N AC1000

# Instruction Manual P/N:EVO7101



**13.** Install the filter to the plenum, secure and tighten using 8mm nut driver.



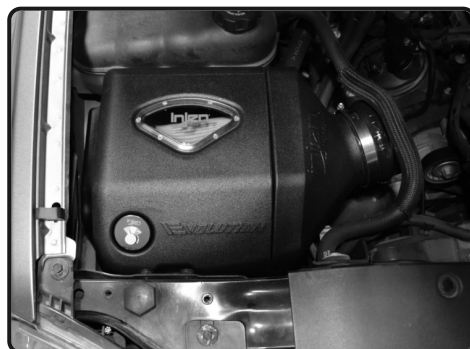
**14.** Now secure the plenum using pro-vided 4 M6 screws and rubberized wash-ers. Secure and tighten.



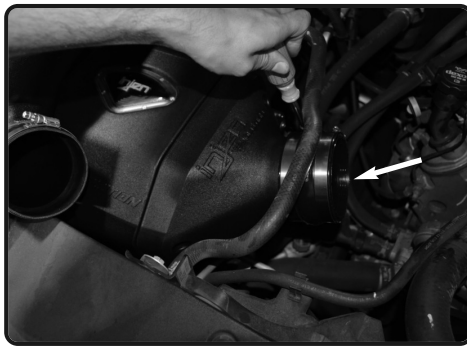
**15.** Install the the 4" and 3.75" straight hoses to the tube with clamps provided.



**16.** Now install the air box assembly into the vehicle. Position the tabs to seat like OEM box.



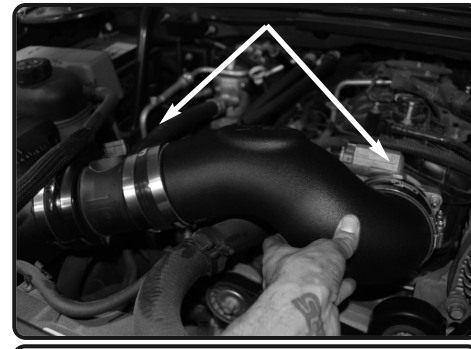
**17.** Air box assembly in place.



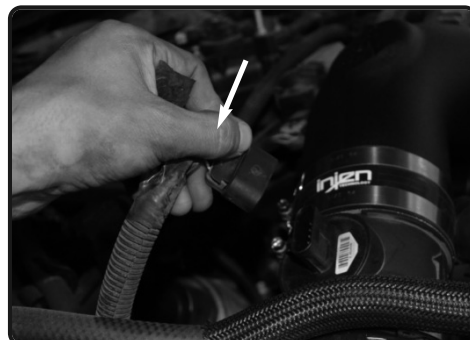
**18.** Install the 4" hump hose to the plenum. Tighten clamp on plenum only.



**19.** Install the MAF sensor to the hump hose. ***Make sure Arrow on sensor is going in direction towards the throttle body.***



**20.** Install the intake tube. Position for best fit, secure and tighten all clamps using 8mm nut driver.



**21.** Re-connect the MAF sensor harness.



**22.** Install the provided 8mm hose to the crank case vent tube on engine, and connect the other end to the fitting on the intake tube.



Congratulations! You have just completed the installation of this intake system. Periodically, check the alignment of the intake, normal wear and tear can cause nuts and bolts to come loose. **Note: Check clearance and adjust if needed! Failure to check the alignment and adjust the intake can cause damage that will void the warranty. Injen Technology is not responsible for any damages caused by/from improper installation.**

## Test Drive:

1. With the transmission in neutral or park and the parking brake engaged, start the engine. Listen for air leaks or odd noises. If air leaks are detected, secure hoses and connections. For any odd noises, inspect entire system for cause and adjust intake as needed. The Injen intake will function identically to the factory system but will be louder and more powerful.
2. Perform a road test. Listen for odd noises or rattles and fix as necessary.
3. If there are no issues, continue to enjoy your added performance from the Injen performance Intake kit.
4. Injen Technology recommends you periodically check clearance and adjust if needed! Failure to check the alignment and adjust the intake can cause damage that will void the warranty. Injen Technology is not responsible for any damages caused by/from improper installation.

1. Upon completion of the installation, reconnect the negative battery terminal before you start the engine.
  2. Align the entire intake system for the best possible fit. Once the intake has been properly fitted continue to tighten all nuts, bolts and clamps.
  3. Periodically, recheck the alignment of the intake system and make sure there is proper clearance around and along the length of the intake. Failure to follow proper maintenance procedures may cause damage to the intake and will void the warranty.
  4. Start the engine and listen carefully for any odd noises, rattles and/or air leaks prior to taking it for a test drive. If any problems arise go back and check the vacuum lines, hoses and clamps that maybe causing leaks or rattles and correct the problem.
  5. Check the filter for excessive dirt build up. Clean or replace the filter with an original Injen filter (can be bought on-line at "injenonline.com").
- Congratulations! You have just completed the installation of the best intake system sold on the market. Enjoy the added power and performance of your new intake system.