

2019-UP Chevy / GMC 1500 Cat Back Performance Exhaust System

Fits 6.2L Engine 2 / 4 Wheel Drive, All Wheelbase / Crew Cab & Extended Cab

Thank you for choosing Rough Country for all your vehicle needs.

Please read instructions before beginning installation. Check the kit hardware against the kit contents shown below. Be sure you have all needed parts and know where they go.

If question exist, please call us @1-800-222-7023. We will be happy to answer any questions concerning this product.

Check all fasteners for proper torque. Check to ensure for adequate clearance between all components.

Periodically check all hardware for tightness.

KIT CONTENTS:

Exhaust Clamps x8

Inlet Tube (A) x1

Extension Pipe (B)

Muffler (C) x1

Left Side Exit Tube (D) x1

Right Side Down Tube (E) x1

Left Side Exit Tube (F) x1

Right Side Down Tube (G) x1

(Black) Exhaust Tips (H) x2

TOOLS NEEDED:

13mm Wrench or Socket

15mm Wrench or Socket

10mm Wrench or Socket

Notice!!

Extension pipe "B" is used for Crew Cab w/6.5' bed only. It is NOT used on Double cabs or Crew Cab 5.5' bed vehicles.



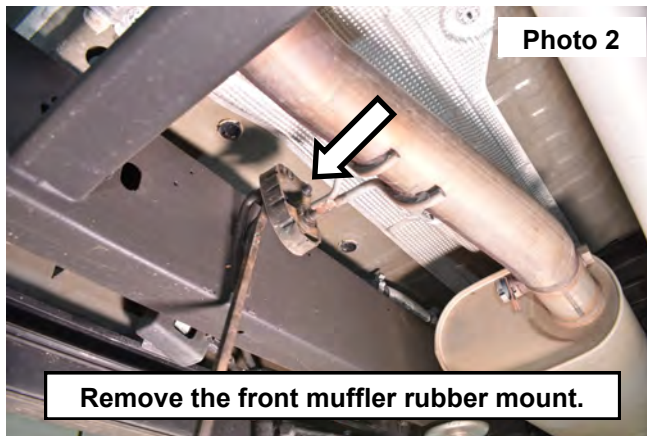
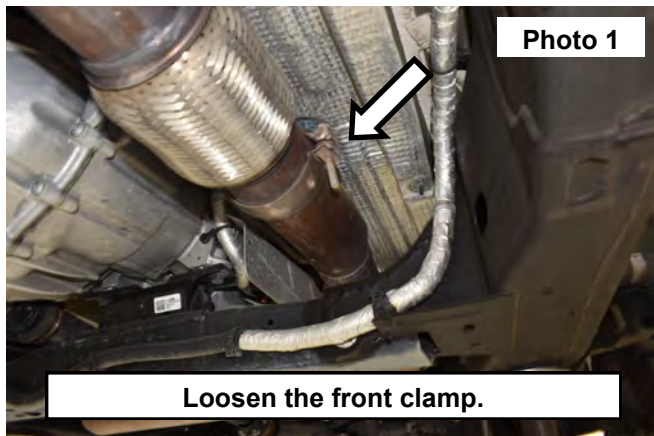
Torque Specs:

Size	Grade 5	Grade 8	Size	Class 8.8	Class 10.9
5/16"	15 ft/lbs	20ft/lbs	6MM	5ft/lbs	9ft/lbs
3/8"	30 ft/lbs	35ft/lbs	8MM	18ft/lbs	23ft/lbs
7/16"	45 ft/lbs	60ft/lbs	10MM	32ft/lbs	45ft/lbs
1/2"	65 ft/lbs	90ft/lbs	12MM	55ft/lbs	75ft/lbs
9/16"	95 ft/lbs	130ft/lbs	14MM	85ft/lbs	120ft/lbs
5/8"	135ft/lbs	175ft/lbs	16MM	130ft/lbs	165ft/lbs
3/4"	185ft/lbs	280ft/lbs	18MM	170ft/lbs	240ft/lbs

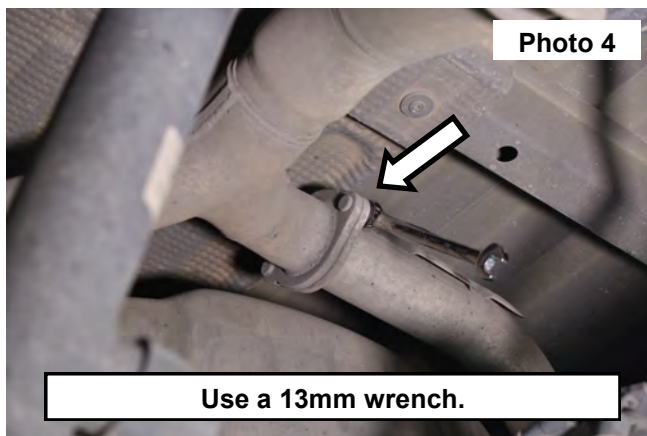
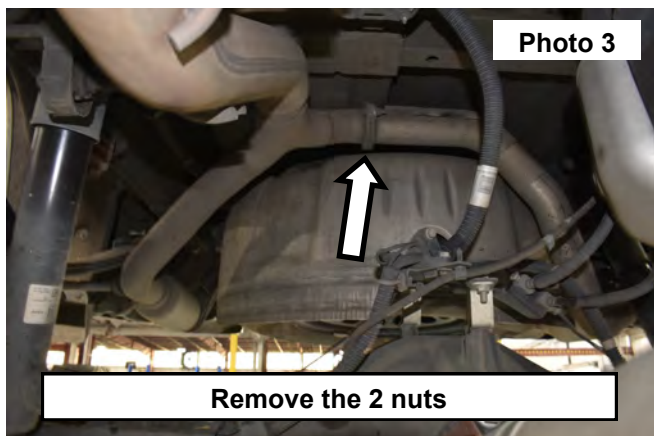


INSTALLATION INSTRUCTIONS

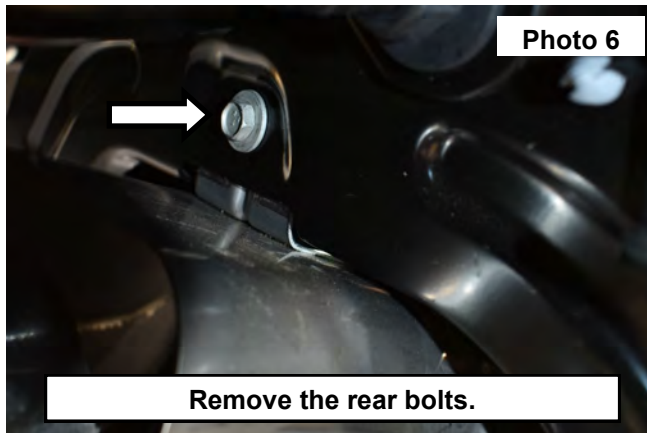
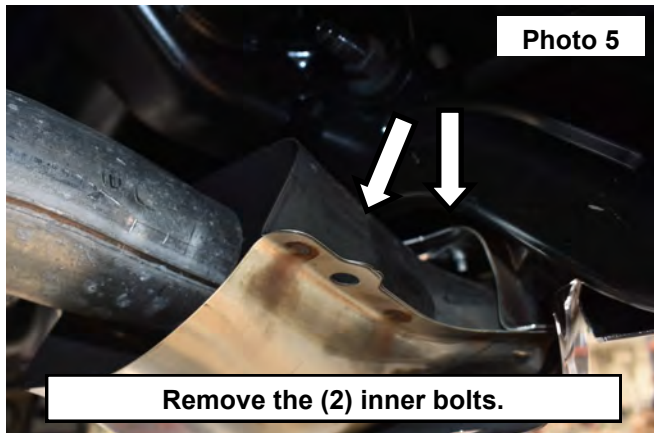
1. This exhaust system has the option to use the supplied exhaust tip or use the OE exhaust tip.
2. Loosen the front clamp securing the flex tube to the rear exit tube using a 15mm socket. **See Photo 1.**
3. Remove the muffler from the front rubber mount. **See Photo 2.**



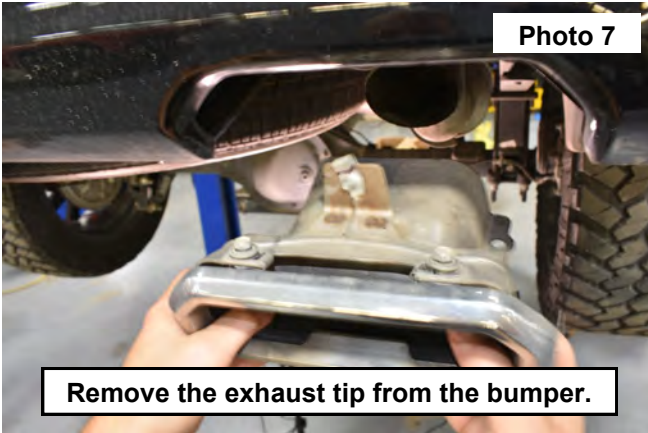
4. Using a 13mm socket remove the (2) nuts from the studs on left rear tube flange. **See Photos 3 and 4.**



5. This exhaust was developed to retain the stock exhaust tip if desired. If retaining factory tip skip to step 8. If using the RC supplied dual exhaust tip, use a 10mm socket to remove the OE exhaust tip. Remove the (2) inner bolts in the exhaust tip. Then remove the inner bolt. **See Photos 5 and 6.**



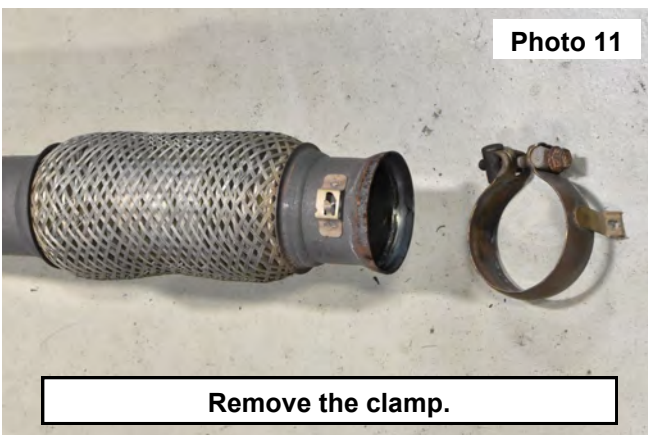
6. Remove the exhaust tip from the bumper. **See Photo 7.**
7. Remove the left rear tube hanger from the frame mount, then remove the exhaust tube from the vehicle. **See Photo 8. (Shown with stock tip removed)**



8. Support the muffler. Remove the right rear tube mount from the hanger. **See Photo 9.**
9. Remove the right rear frame hanger using a 15mm socket. **See Photo 10. (Shown with stock tip removed)**
10. Remove the OE muffler and tube from the vehicle.



11. Remove the clamp from the OE exit tube. **See Photo 11.**
12. Install the clamp onto the supplied rear exit tube. **See Photo 12.**



13. Install the coupler onto the inlet tube "A". Using a 15mm wrench snug the clamp so the inlet tube can still be adjusted. **See Photo 13.**
14. Install a clamp around the rear inlet tube "A" and install the tube mount into the OE rubber hanger. **See Photo 14.**

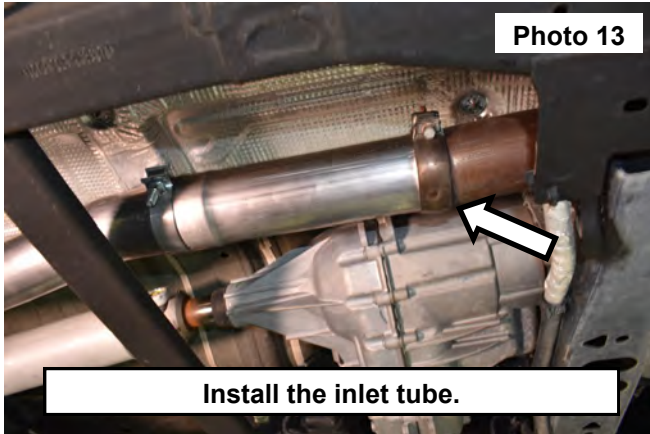


Photo 13

Install the inlet tube.

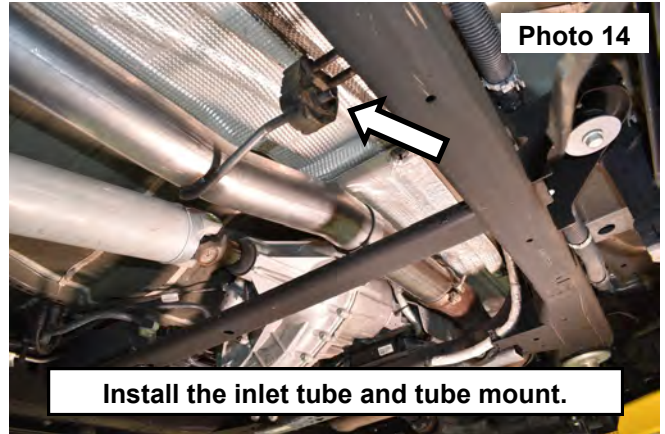


Photo 14

Install the inlet tube and tube mount.

15. If installing on a Crew Cab 6.5' vehicle, install the extension pipe "B" on the "A" pipe and secure using the supplied clamp. **NOTE: This extension pipe "B" is NOT used on Crew Cab 5.5' bed or Double Cab vehicles.**
16. Using a support on the mid tube. Then install a clamp and the muffler "E" onto the mid tube. **See Photo 15.**
17. Install a clamp and the right rear exit tube into the muffler. **See Photo 16.**



Photo 15

Install a clamp and the muffler.



Photo 16

Install a clamp and the right rear exit tube.

18. **FOR OE REAR TIP.** Install the rear down tube into the OE exhaust tip first. Then install a clamp and the tube into the rear exit tube and secure by using the OE rubber frame mount and bolt. Tighten using a 13mm wrench.
19. **FOR SUPPLIED REAR TIP.** Install a clamp onto the right rear exit tube. Then install the right rear down tube into the exit tube, install the OE rubber frame mount and the retained bolt. Tighten using a 13mm wrench. **See Photos 17 and 18.**



Photo 17

Install a clamp and the left rear exit tube.

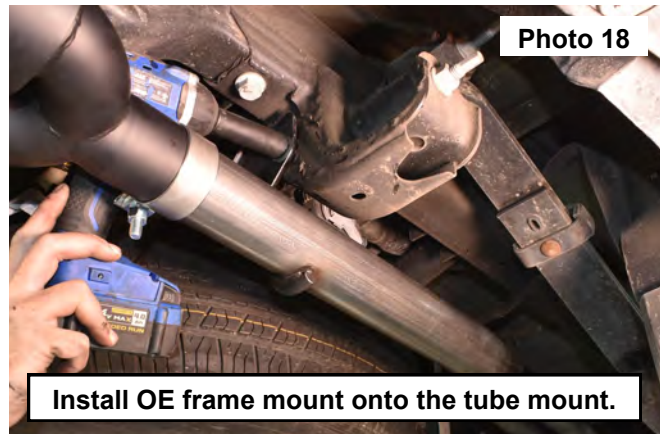
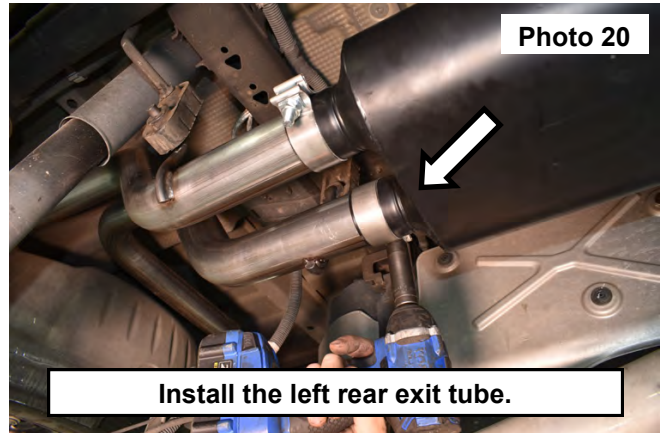


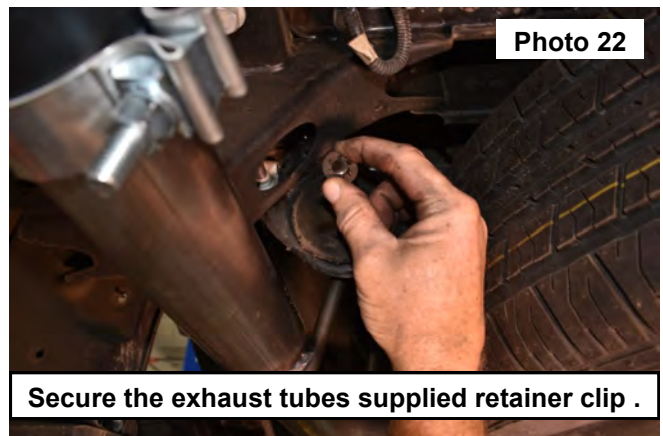
Photo 18

Install OE frame mount onto the tube mount.

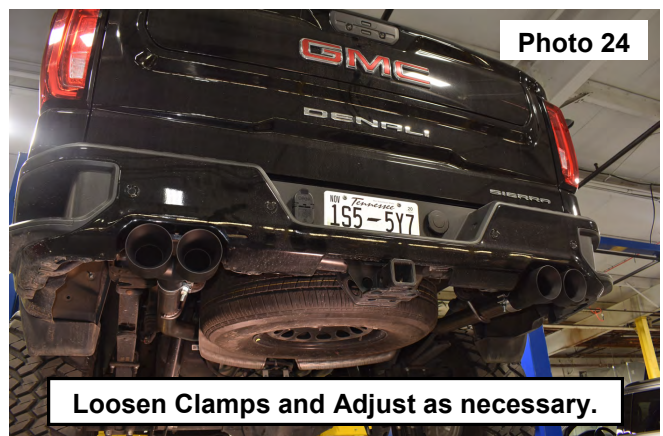
20. Set the exhaust tubes into the desired position and tighten all clamps using a 13mm socket.
21. Install the supplied tip using a clamp. Adjust the tip so it does not come in contact with the bumper. Tighten clamp using a 13mm socket. **See Photo 19.**
22. Install a clamp and the left rear exit tube into the muffler. **See Photo 20.**



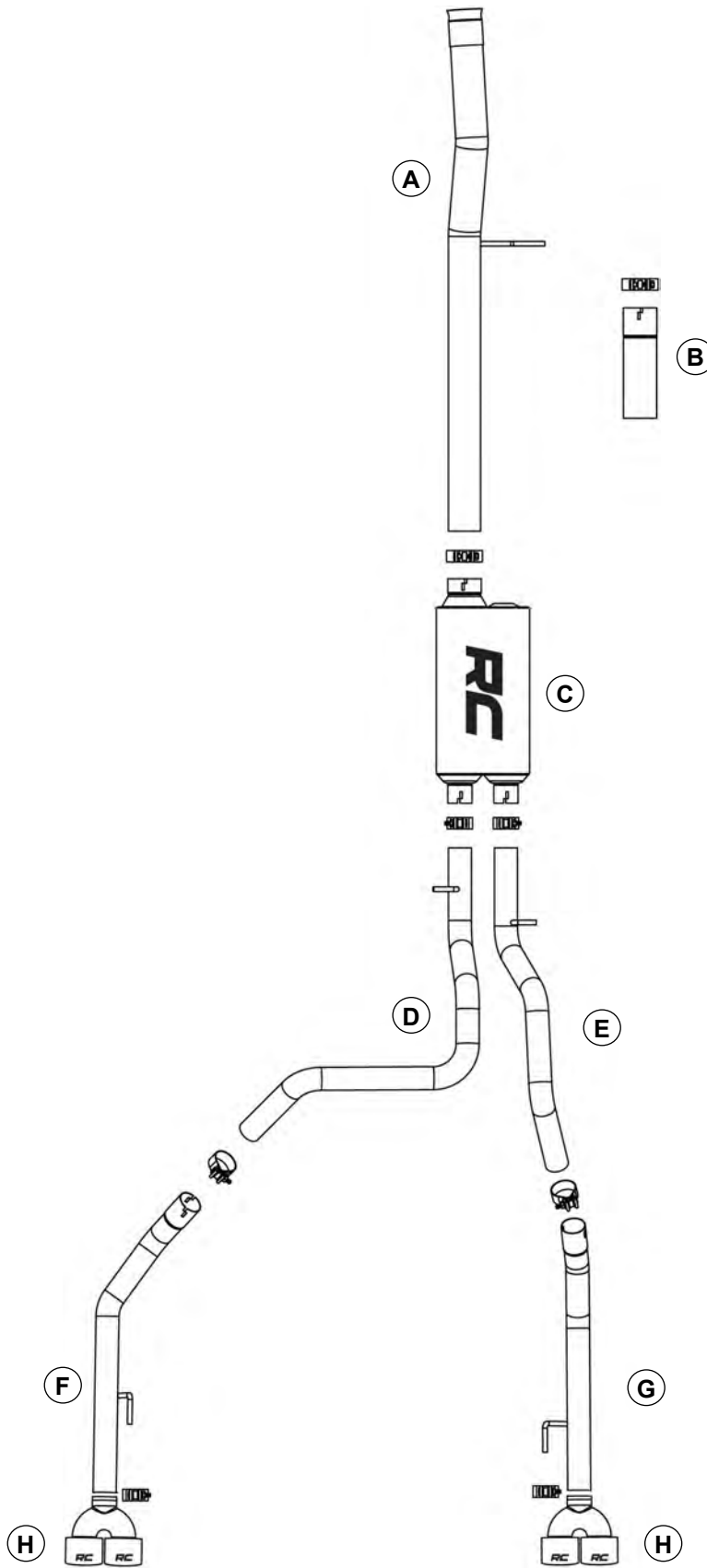
23. Install the down tube mount into the rubber frame mount. Then install a clamp and the left rear down tube into the rear exit tube. Secure the clamp into place and tighten using a 13mm socket. **See Photo 21.**
24. Secure the exhaust tubes into the OE frame mount using the supplied retainer clip washers onto the tube hangers installed through the rubber exhaust hangers. **See Photo 22.**



25. Install the left rear exhaust tip and clamp onto the down tube. Adjust the tip so it does not come in contact with the bumper. Tighten clamp using a 13mm socket. **See Photo 23.**
26. Check to ensure adequate clearance between exhaust and all other components. Adjust as necessary. **See Photo 24.** It is recommended if adjustment is needed to loosen all clamps to allow the exhaust to be adjusted and then re-tighten after desired positioning.



27. Periodically check all hardware for tightness.



By purchasing any item sold by Rough Country, LLC, the buyer expressly warrants that he/she is in compliance with all applicable, State, and Local laws and regulations regarding the purchase, ownership, and use of the item. It shall be the buyers responsibility to comply with all Federal, State and Local laws governing the sales of any items listed, illustrated or sold. The buyer expressly agrees to indemnify and hold harmless Rough Country, LLC for all claims resulting directly or indirectly from the purchase, ownership, or use of the items.

