



FULL SCREEN OE-STYLE RADIO UPGRADE WITH NAVIGATION

(2014-2018 CHEVROLET SILVERADO)
(2014-2018 GMC SIERRA)

INSTALLATION INSTRUCTIONS

CONTENTS

- (1) Main Harness Adapter
- (1) Radio Antenna Cable
- (1) 12Pin Reverse Cam Converter (used w/ factory 4" screen)
- (1) 54Pin Reverse Cam Converter (w/ factory 7" screen)
- (1) 8Pin USB Harness
- (1) Cam Inputs
- (1) RCA Audio Output
- (1) 10 Pin USB Line
- (1) Wifi Antenna Cable
- (1) GPS Antenna Cable
- (1) Mic Cable
- (1) DVR Cable
- (1) AUX Input
- (1) Canbox

TOOLS REQUIRED

- Soft Pry Tool
- 7mm Socket
- 7mm Wrench
- Socket Wrench
- Flat Blade Screwdriver
- Phillips Screwdriver

SKU # S127139



STEP 1

Using a soft pry tool, pry around the radio bezel to release the (8) clips.



STEP 2

Pull the plastic trim down and disconnect the (2) electrical connectors. Remove the plastic trim from the vehicle. The plastic trim will not be reused.

STEP 3

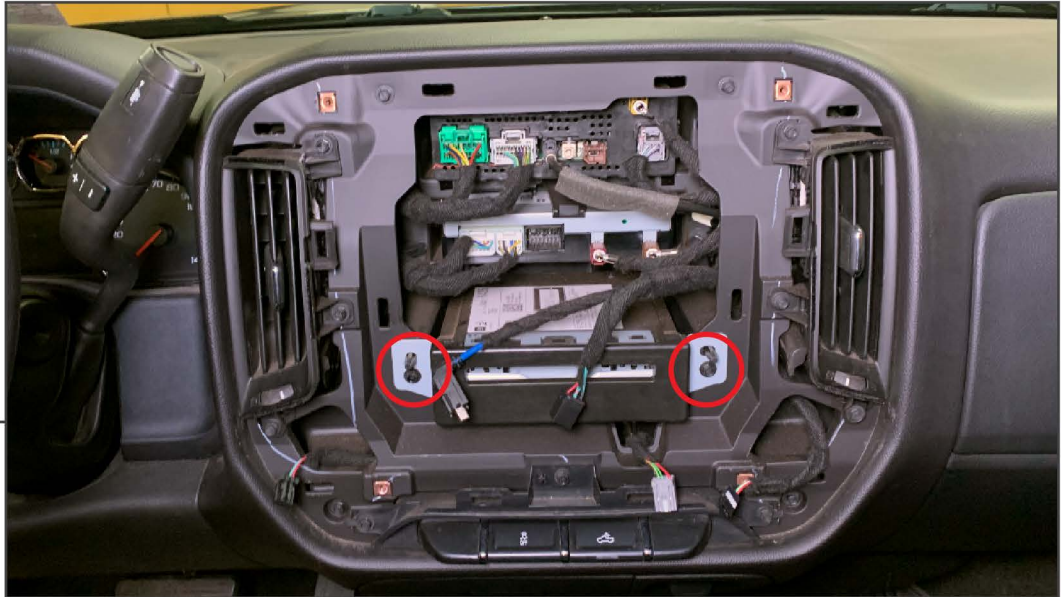


Using a 7mm socket, remove the (4) screws securing the original radio to the dashboard.

STEP 4

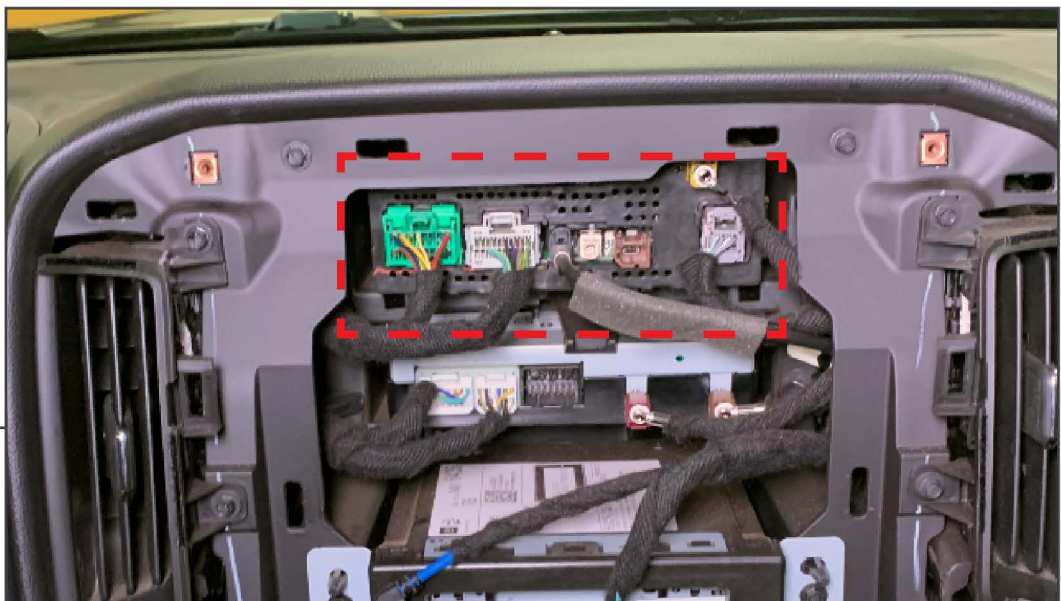


Pull the radio away from the dashboard. Carefully disconnect the (3) electrical connectors behind the radio.



STEP 5

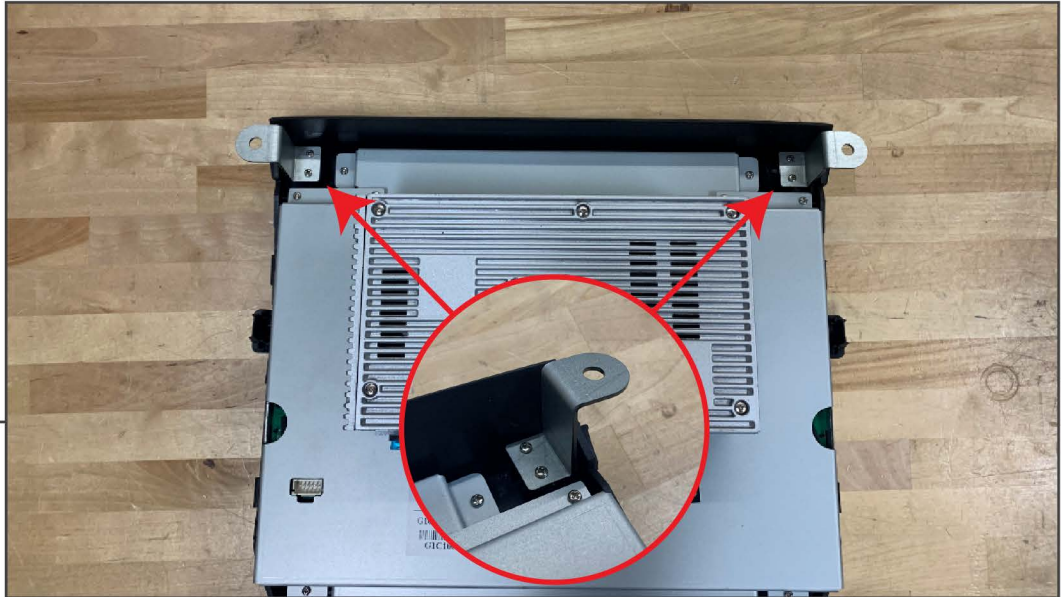
Remove (2) screws on the CD player. Remove the CD player from the dashboard and unplug the electrical connector. The CD player will not be reused.



STEP 6

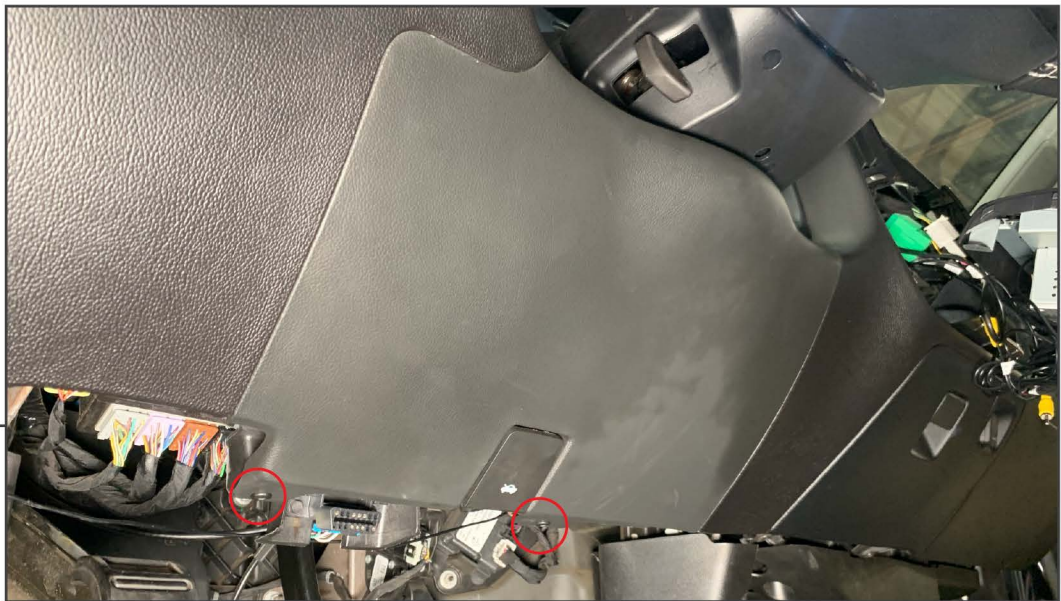
Unplug the various connectors from the radio module in the dashboard. Pull the radio module out from the dashboard. This module will not be reused.

STEP 7



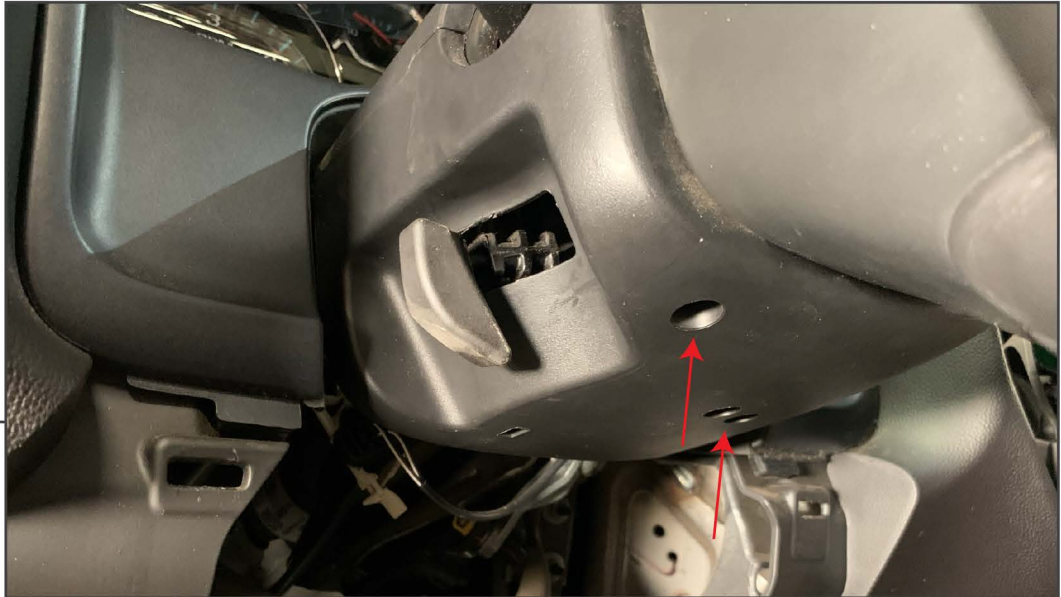
Flip the navigation unit over on a soft surface. Install the (2) mounting brackets to the top of the navigation unit using the provided (4) Phillips screws.

STEP 8



Steering Wheel Control Wiring: Remove the driver side lower dash panel. Use a T15 Torx bit to remove the screws across the bottom of the panel. Then firmly pull the panel away from the vehicle.

STEP 9



If applicable, remove the screws securing the steering wheel trim together. Then using a soft pry tool, separate the two halves.

STEP 10



Pull the tilt lever trim away from the column.



STEP 11

Locate the flat plug at the base of the steering wheel. Unplug it and install the supplied T-harness. Route the other end of the T-harness to the navigation unit. Then re-assemble the steering column and dash panels in reverse order.



STEP 12

Please Note: Not all applications will use every harness, and not all plugs on every harness will be used.

Installation: Plug in all of the necessary wiring harnesses. Route all wiring harnesses so that they do not interfere with the display and inner dash structure. Repeat Step 1-4 in reverse order. Installation is now complete.

See last pages for wiring diagrams.



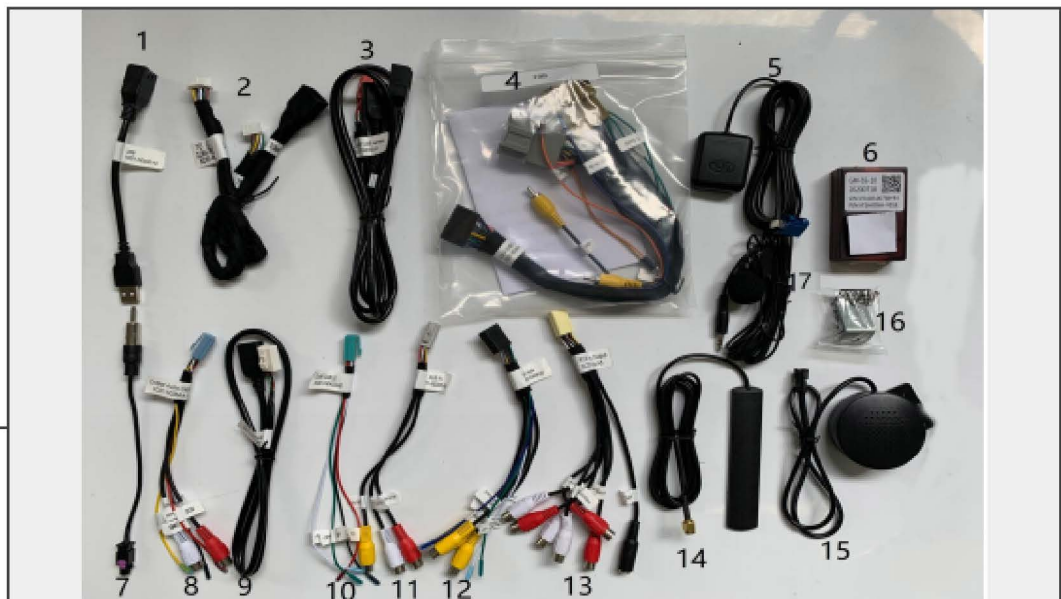
**STEP 13
(HVAC NOTE)**

Identify the vehicle's HVAC unit, see photo above. Once the navigation unit is installed, use the directory below to select the vehicle HVAC system to ensure proper HVAC function.

Settings > System > Setting Guide > Car Model/AC > Select Vehicle & HVAC Type (Silverado/Sierra - Manual A/C OR Auto A/C) > Select OK at bottom of screen > Select back arrow > Select "Save" > Restart vehicle and radio.

Manual Climate Vehicles: Car Info > Manual A/C
Automatic/Dual Climate Systems: Car Info > Auto A/C

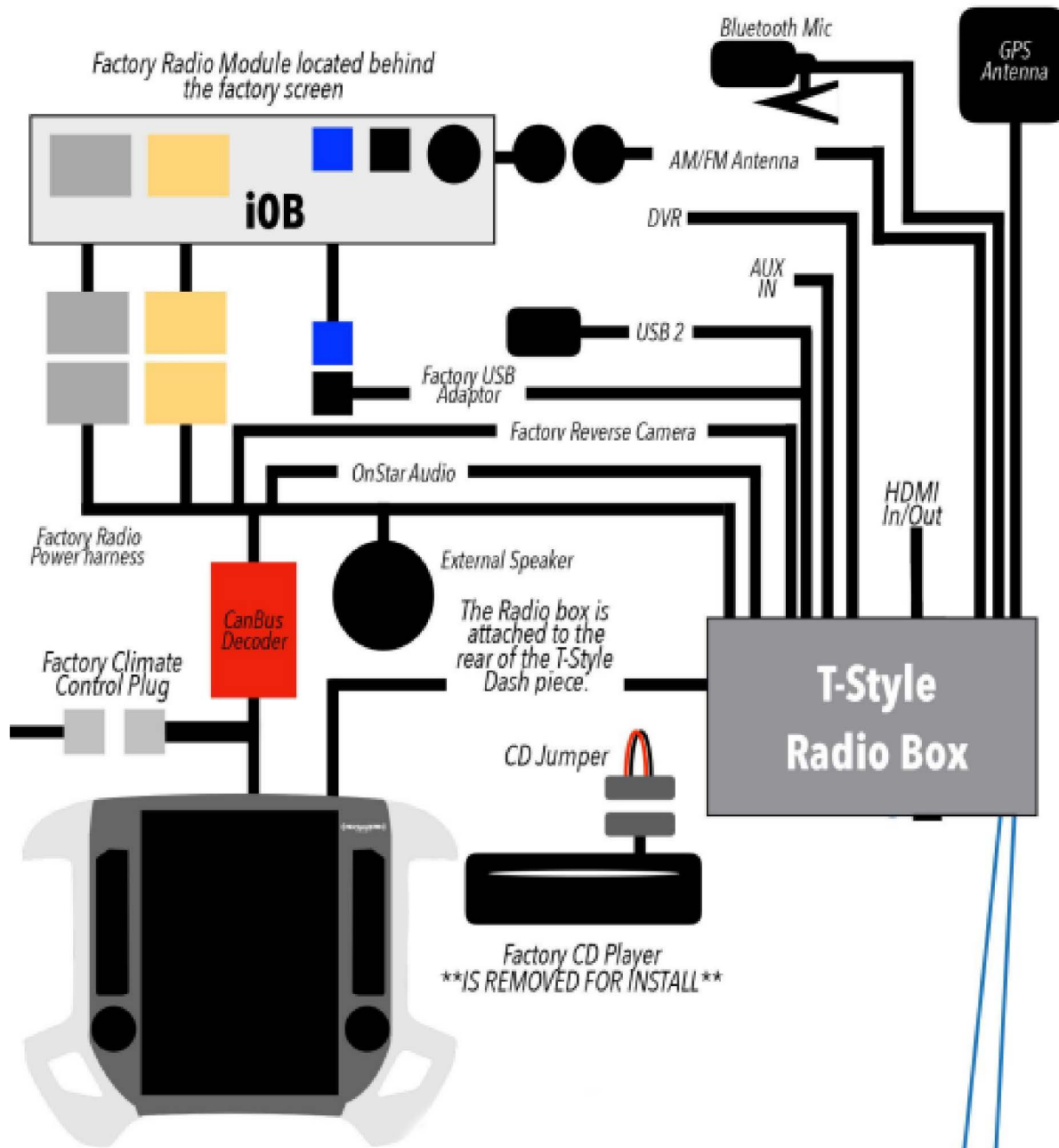
STEP 14



Identify the supplied wiring harnesses.

- | | |
|--|--|
| <ul style="list-style-type: none"> 1. USB Cable 3. 8Pin USB Harness 5. Navigation Antenna 7. AM/FM Antenna Adapter 9. 10Pin USB Line 11. Auxiliary Input 13. RCA Audio Output 15. External Speaker 17. Microphone | <ul style="list-style-type: none"> 2. Climate Control Cable 4. iOB Power Harness 6. GM Canbox 8. OnStar Audio Cable 10. DVR Cable 12. Camera Input 14. Wi-Fi Antenna 16. Upper Mounting Brackets |
|--|--|

Installation Diagram 7" iOB Systems



2018 UP ONLY
Screen Plug

JUMPER PLUG
See page 11



Installation Diagram

4" i03
8" i05/i06

