



2" COIL-OVER KIT WITH ADJUSTABLE DAMPING

(2019-2021 CHEVROLET SILVERADO 1500)
(2019-2021 GMC SIERRA 1500)

INSTALLATION INSTRUCTIONS

CONTENTS

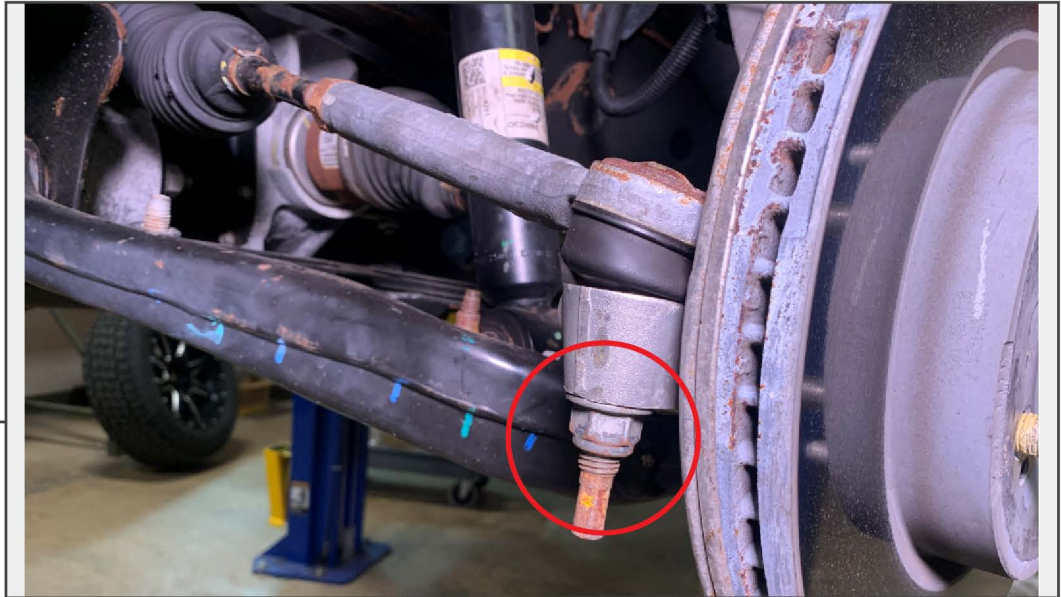
(2) Front Coil-Over Assemblies
(2) Rear Shocks
(4) M10x1.25 x 65mm Bolts
(4) M10 Flat Washers
(4) M10 Locking Nuts
(1) Spanner Wrench
(1) Allen Key
(1) Damper Allen Key

TOOLS REQUIRED

10mm, 15mm, 16mm, 17mm, 18mm,
21mm Sockets / Wrenches
Ratchet
Pry Bars
Hammer
Floor Jack
Jack Stands

SKU # S128430

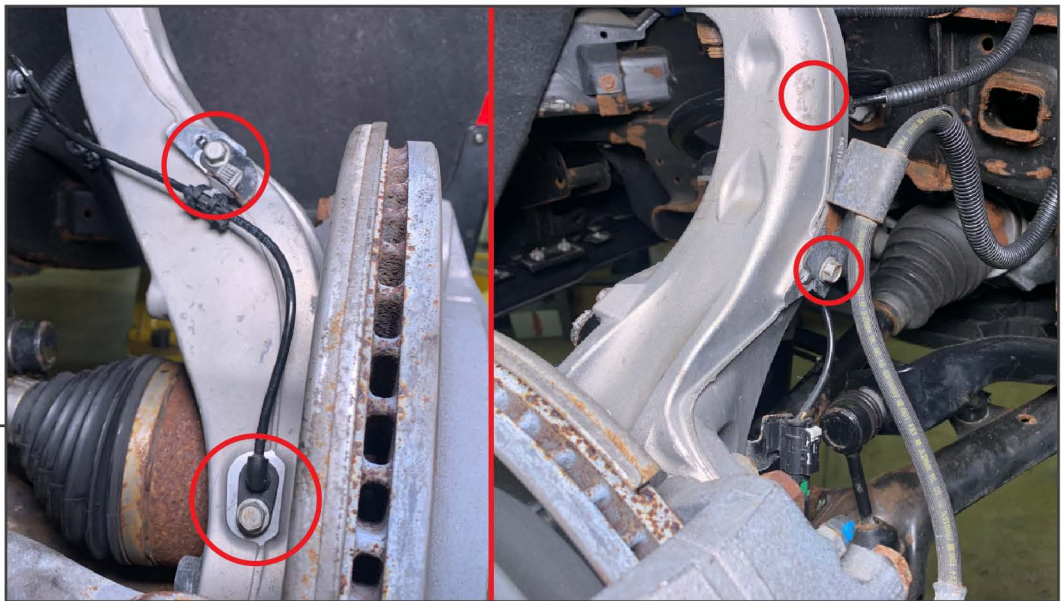
**STEP 1
(FRONT)**



Raise and safely support the vehicle in the air. Remove wheel. Remove (1) 21mm nut from the tie rod end.

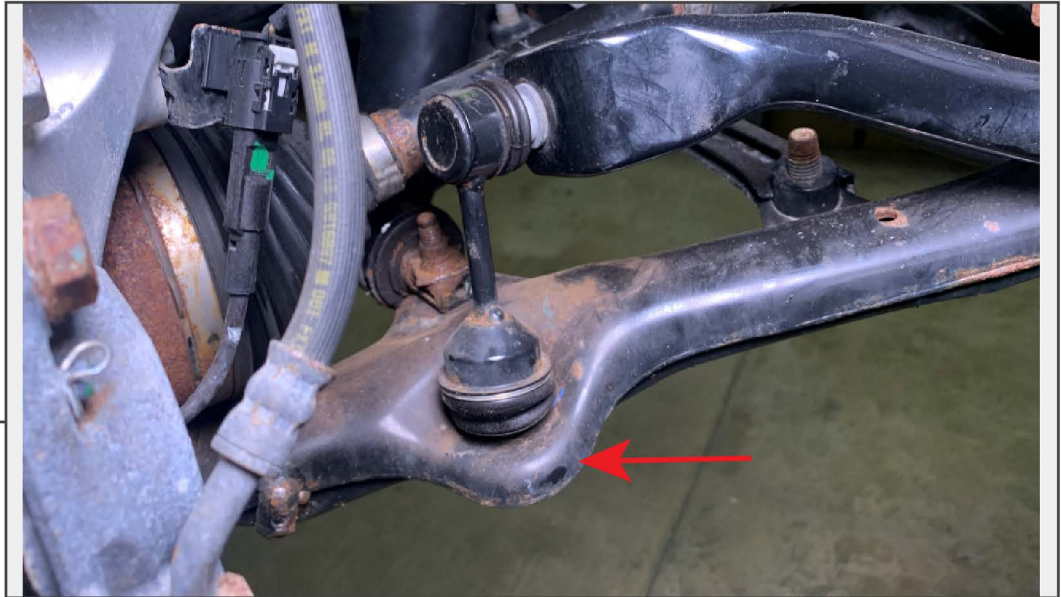
Note: Once the nut is loose, strike the knuckle with a hammer to dislodge the tie rod end from the knuckle.

STEP 2



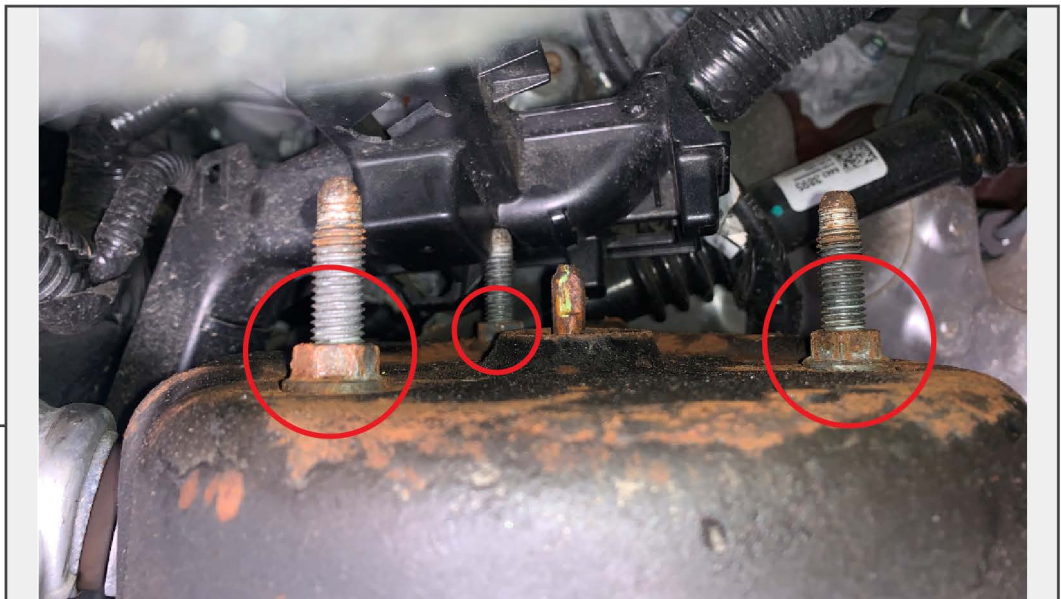
Remove the brake hose/ABS sensor harness from the retainers at the (4) locations to allow slack during disassembly.

STEP 3



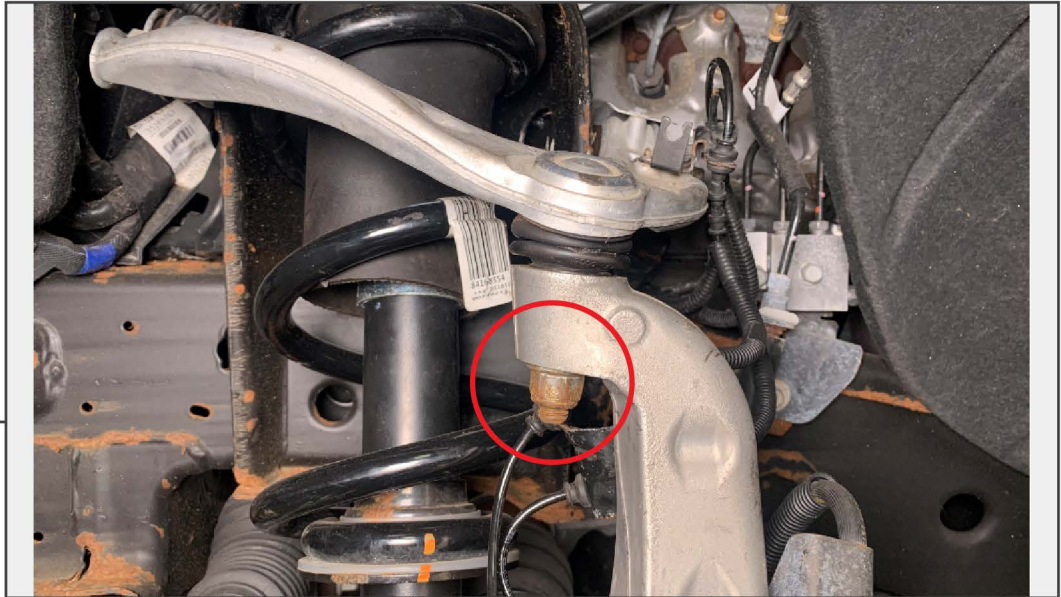
Remove (1) 18mm nut from the bottom of the sway bar link.

STEP 4



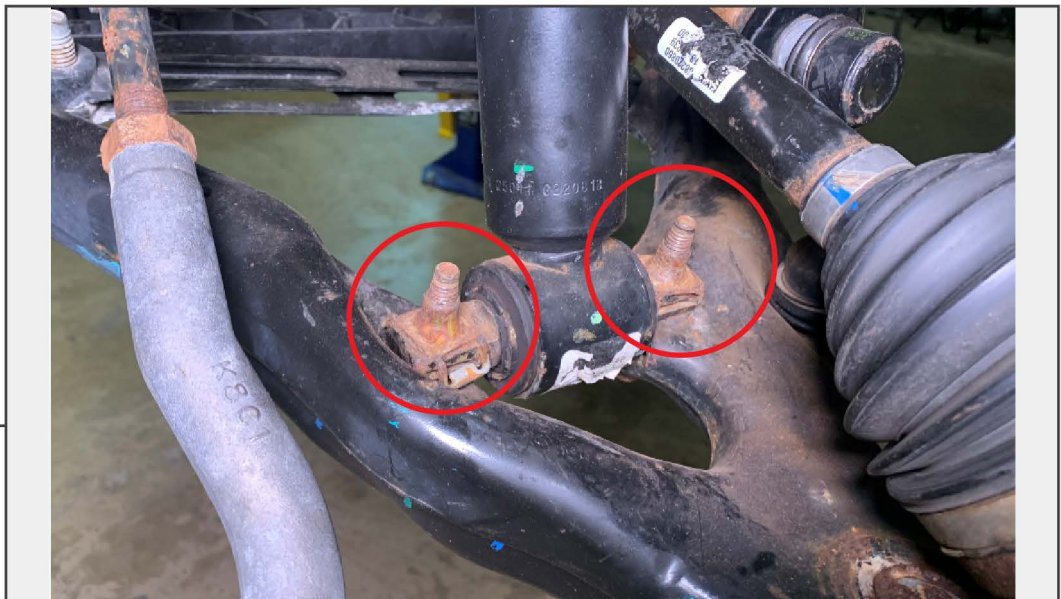
Lift and remove the wiring harness clips from the upper strut studs. Remove (3) 14mm nuts from the upper strut assembly.

STEP 5



Loosen (1) 21mm nut on the upper ball joint. Once loose, strike the knuckle with a hammer to dislodge the ball joint from the knuckle. Once dislodged, remove nut from ball joint.

STEP 6



Remove (2) 15mm bolts from the bottom of the strut assembly.

STEP 7



Remove the vehicle strut assembly from the vehicle. Prying downward on the lower control arm with a pry bar may be necessary to gain additional clearance.

STEP 8



Install the coil-over assembly into the vehicle. Use the (3) provided 14mm nuts to secure the upper mount to the vehicle. Install the lower coil-over mount to the control arm using (2) M10 x 65mm bolts, (2) M10 flat washers, and (2) M10 locking nuts.

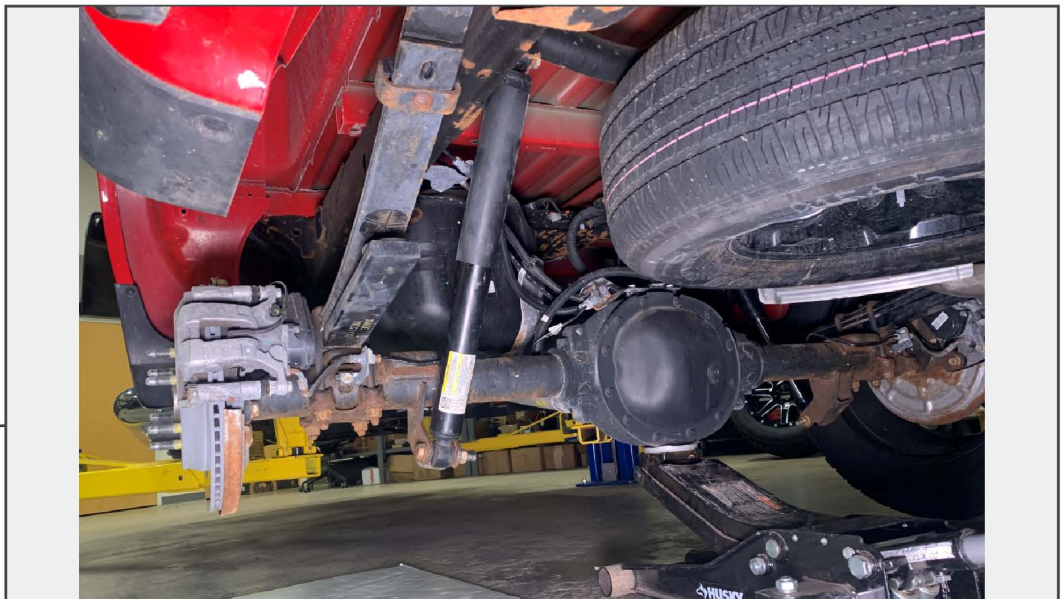
Note: Upper mounting studs are directional. Spin the coil-over assembly until the studs align with the vehicle frame.

STEP 9



Re-assemble the vehicle suspension following steps 1-8 in reverse order using original hardware. See last page for torque specifications.

**STEP 10
(REAR)**

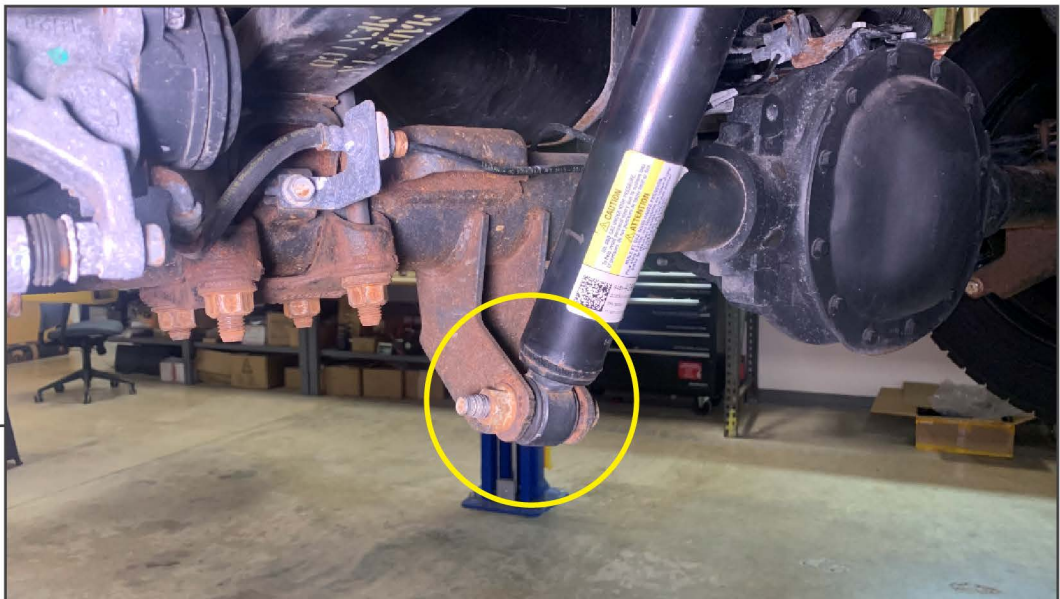


Remove rear wheels. Apply light pressure under the rear axle using a floor jack to relieve pressure applied to shock absorbers.



STEP 11

Remove (1) 21mm bolt from the top of the shock absorber.



STEP 12

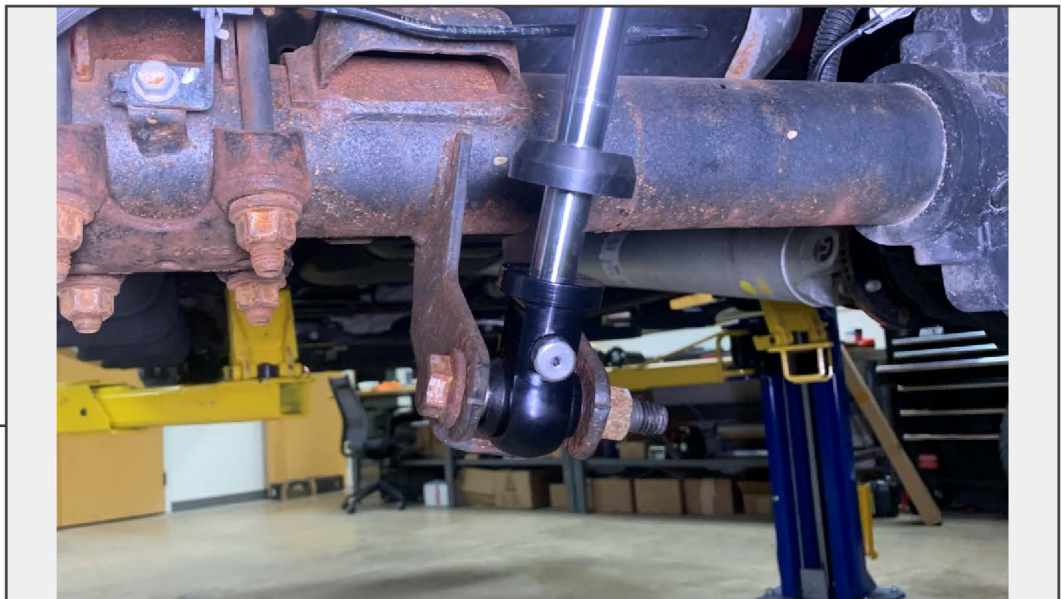
Remove (1) 21mm bolt and nut from the shock absorber mount on the axle. Remove the shock absorber from the vehicle.

STEP 13



Install the new shock absorber to the vehicle frame using original hardware.

STEP 14



Install the shock absorber into the vehicle axle mount using the original 21mm bolt. Raise/lower the axle accordingly to allow the shock absorber to align with the axle. Compressing the shock absorber by hand may be necessary.

Note: Ensure the damping adjustment is facing outward to allow adjustment while installed.

STEP 15



See last page for torque specifications.

Installation is now complete.

**DAMPING
ADJUSTMENT**



To adjust suspension damping, turn the dial clockwise to increase damping stiffness.



**HEIGHT
ADJUSTMENT**

To adjust front ride height, loosen (1) Allen bolt located at the base of the spring mount. Once loose, turn the base with the spanner wrench to raise/lower the mount to change ride height.

Torque Specifications

FRONT

Upper Strut Nuts: 43 ft-lbs.

Lower Strut Bolts: 37 ft-lbs.

Tie Rod End: 26 ft-lbs. + 85-100 Degrees.

Upper Ball Joint Nut: 26 ft-lbs. + 60-75 Degrees.

Lower Sway Bar Link Nut: 74 ft-lbs.

REAR

Upper Shock Absorber Nut: 70 ft-lbs.

Lower Shock Absorber Bolt: 118 ft-lbs.

After any suspension work, it is highly recommended to get a front end alignment to prevent premature wear of suspension components and tires.