



NEOPRENE FRONT AND REAR SEAT COVERS

(2014-2018 SILVERADO - CREW CAB)

INSTALLATION INSTRUCTIONS

CONTENTS

- (1) LH Front Backrest Cover
- (1) RH Front Backrest Cover
- (1) LH Front Base Cover
- (1) RH Front Base Cover
- (2) Front Headrest Covers
- (1) Upper Center Console Cover
- (1) Lower Center Console Cover
- (1) LH Rear Backrest Cover
- (1) RH Rear Backrest Cover
- (1) LH Rear Base Cover
- (1) RH Rear Base Cover
- (2) Rear Headrest Covers
- (1) Rear Cup Holder Cover

TOOLS REQUIRED

- Vacuum Cleaner
- 18mm Socket
- Ratchet
- Pick/Paper Clip

SKU # S142524

**STEP 1
(FRONT)**



Clean the vehicle seats using a vacuum cleaner. Remove the front seat head rest by pressing the (2) buttons at the headrest base.

STEP 2



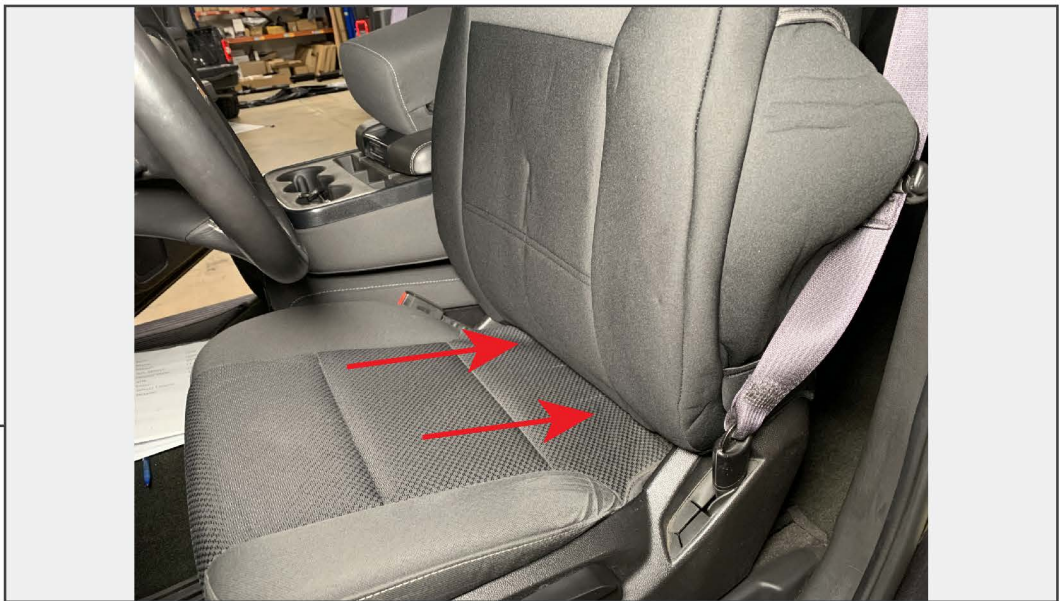
Install the headrest cover onto the vehicle headrest, and secure into place using the attached Velcro.

Note: Do not reinstall the headrest to the vehicle at this time.



STEP 3

Behind the front seat, disconnect the (2) plastic clips attached to the elastic bands to allow the rear felt panel to release from the seat. Allow the panel to hang loose, the panel will be flipped upwards when installing the seat cover.



STEP 4

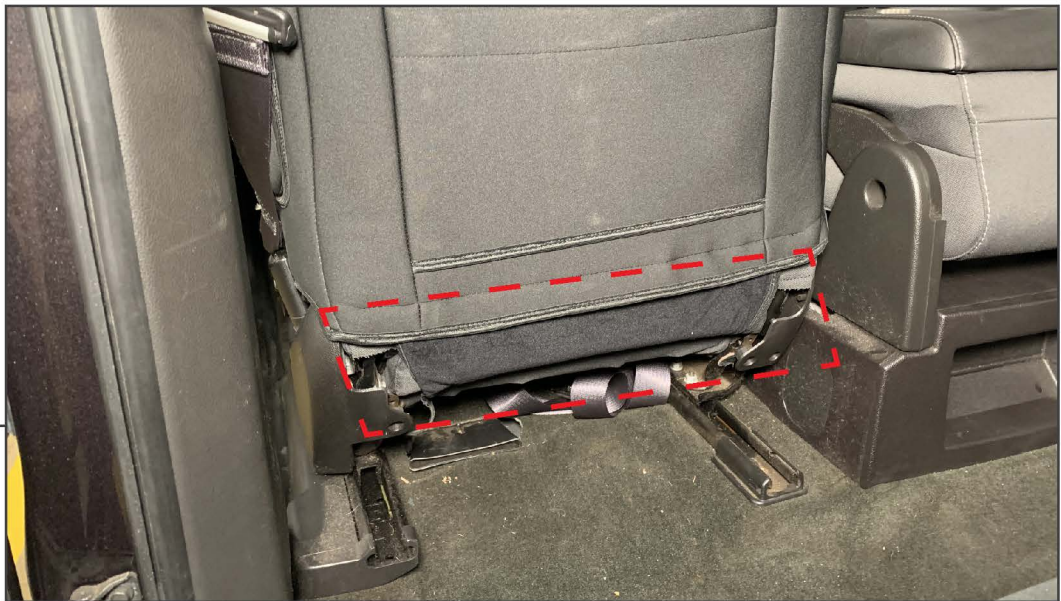
Drape the front seat cover over the front seat, ensuring the airbag cutout is facing out and the rear panel is flipped upwards. Route the Velcro in between the upper and lower seat cushion.

STEP 5



Tuck the (2) headrest holes in the cover under the (2) headrest mounting points on the seat.

STEP 6

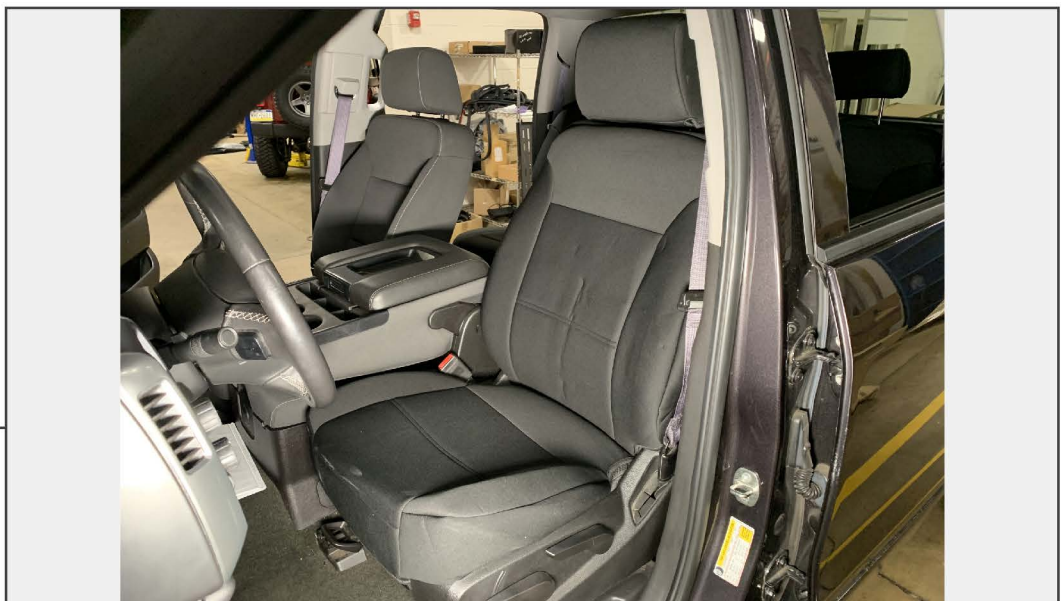


Secure the backrest seat cover to the seat using the attached Velcro along the bottom of the cover.



STEP 7

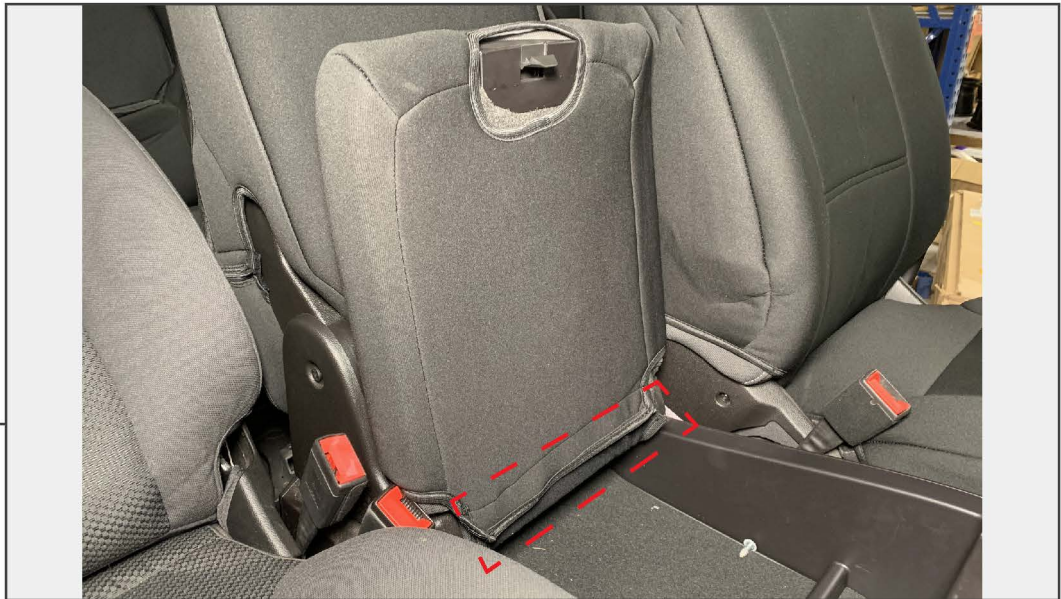
Place the front base cover to the front seat and tuck the (2) rear straps in between the backrest and the base towards the underside of the seat. Tuck the sides of the cover under the plastic trim for best fit. Latch and tighten the (2) straps under the seat, ensuring not to interfere with any under-seat components. Secure the (2) nylon straps to the sides of the seat to secure the sides.



STEP 8

Re-install the headrest to the seat. Repeat steps 1-8 to the remaining front seat.

**STEP 9
(CENTER
CONSOLE)**



Open the middle seat base storage area, and slide the cover onto the seat base storage area lid. Secure the cover using the attached Velcro along the bottom.

STEP 10



Drrape the center console seat backrest cover over the backrest. Secure the cover into place using Velcro on each side of the cover.

**STEP 11
(REAR)**



Using a pick/paperclip, press the (2) inner buttons on the headrest mount to release the headrest from the seat backrest.

STEP 12



Install the headrest cover onto the vehicle headrest. The headrest installs using a friction fit.

Note: Do not reinstall the headrest to the vehicle at this time.

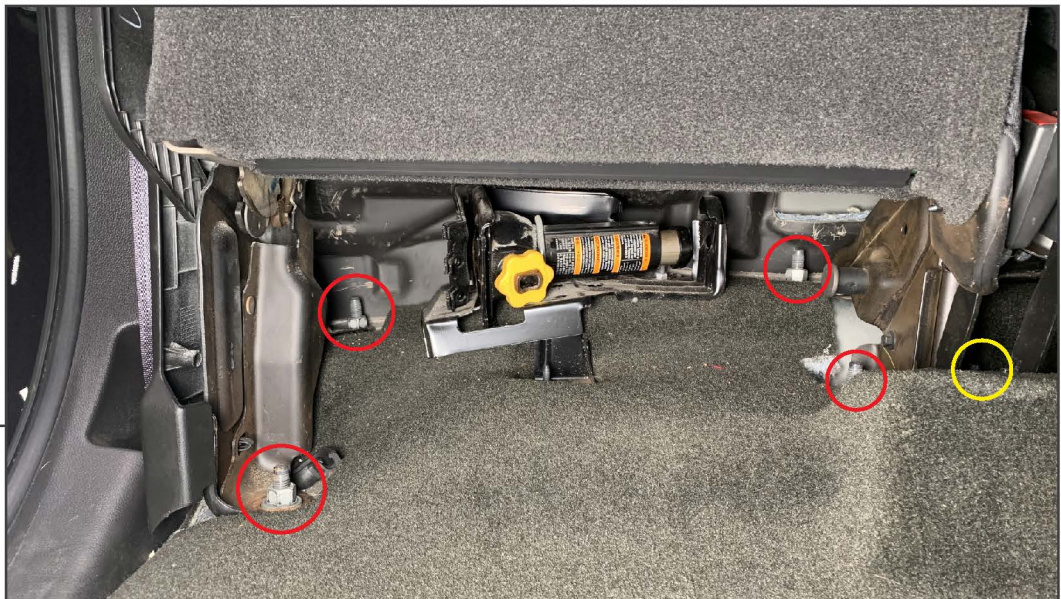
STEP 13



Drape the rear seat base cover over the rear seat, then fold the seat upwards to reveal the straps. Latch and tighten the (4) straps under the rear seat base. Pull and secure the (2) nylon straps to each other under the seat.

Repeat this step for the remaining rear seat base cover.

STEP 14



Remove (4) 18mm nuts from bottom of each rear seat. Remove (1) 18mm nut from the center seat belt latch bracket.

STEP 15



Once the rear seats are unbolted, with assistance, lift the rear seat over the mounting hooks and place the rear seats on the vehicle floor towards the front seats.

Drape the rear seat backrest cover over the backrest. Latch and tighten the (4) straps behind the backrest. Pull and secure the (3) nylon straps to each other behind the backrest.

STEP 16

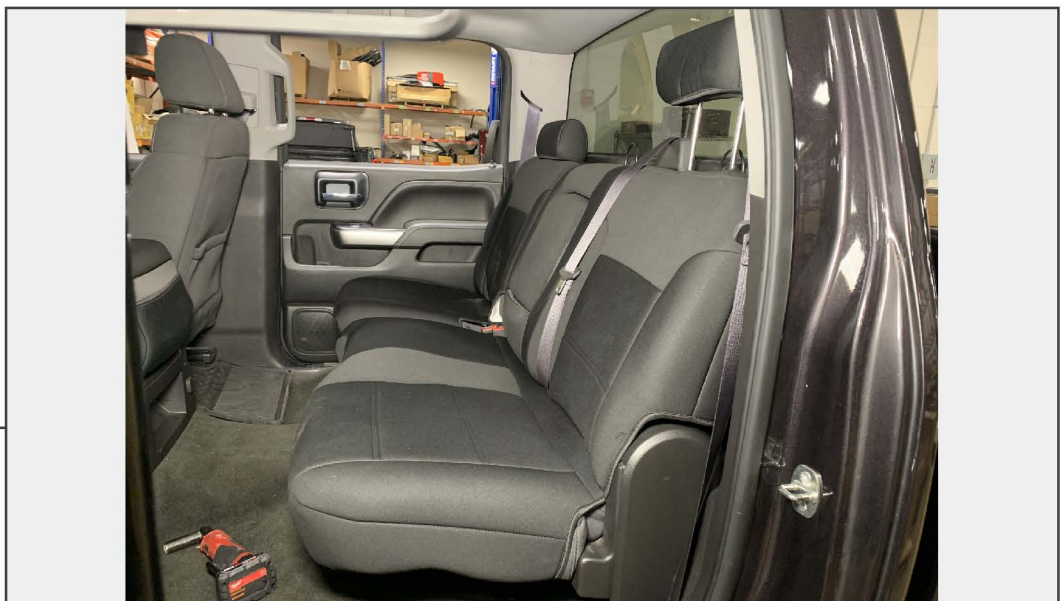


Drape the rear seat backrest cover over the backrest. Latch and tighten the (2) straps behind the backrest. Pull and secure the (3) nylon straps to each other behind the backrest.



STEP 17

Tuck the (2) headrest holes in the cover under the (2) headrest mounting points on the seat.



STEP 18

Re-install the rear seat assembly to the vehicle reusing the original hardware. Install the headrests to the vehicle.



STEP 19

Ensure the center armrest area of the backrest seat cover is properly tucked into the plastic trim area of the armrest cutout. Install the rear arm rest cover to the seat.

Installation is now complete.