



NEOPRENE FRONT SEAT COVERS

(2014-2018 SILVERADO)

INSTALLATION INSTRUCTIONS

CONTENTS

- (1) LH Front Backrest Cover
- (1) RH Front Backrest Cover
- (1) LH Front Base Cover
- (1) RH Front Base Cover
- (2) Front Headrest Covers
- (1) Upper Center Console Cover
- (1) Lower Center Console Cover

TOOLS REQUIRED

Vacuum Cleaner

SKU # S142525

**STEP 1
(FRONT)**



Clean the vehicle seats using a vacuum cleaner. Remove the front seat head rest by pressing the (2) buttons at the headrest base.

STEP 2



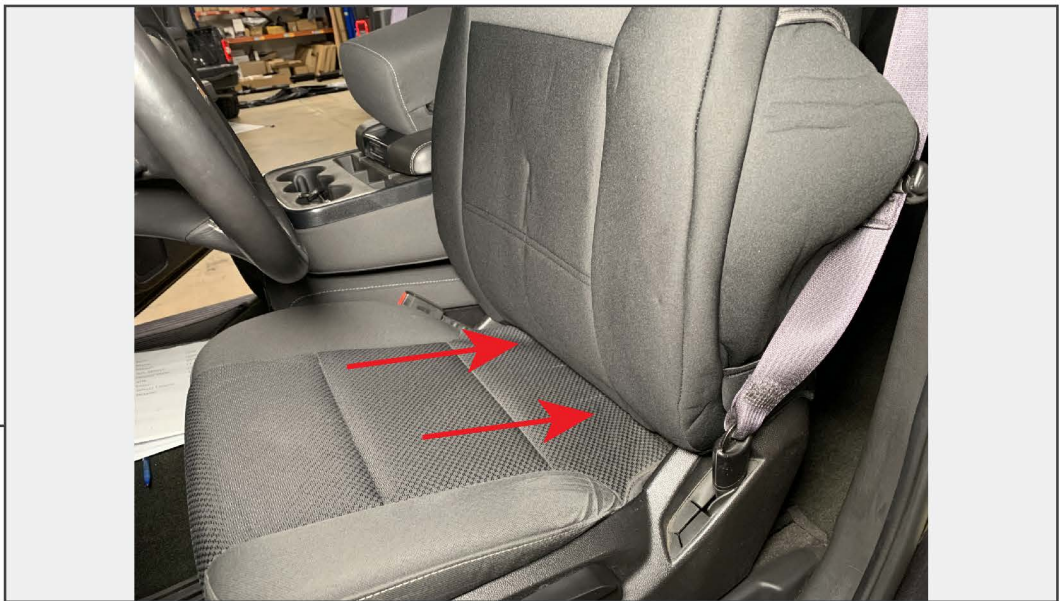
Install the headrest cover onto the vehicle headrest, and secure into place using the attached Velcro.

Note: Do not reinstall the headrest to the vehicle at this time.



STEP 3

Behind the front seat, disconnect the (2) plastic clips attached to the elastic bands to allow the rear felt panel to release from the seat. Allow the panel to hang loose, the panel will be flipped upwards when installing the seat cover.



STEP 4

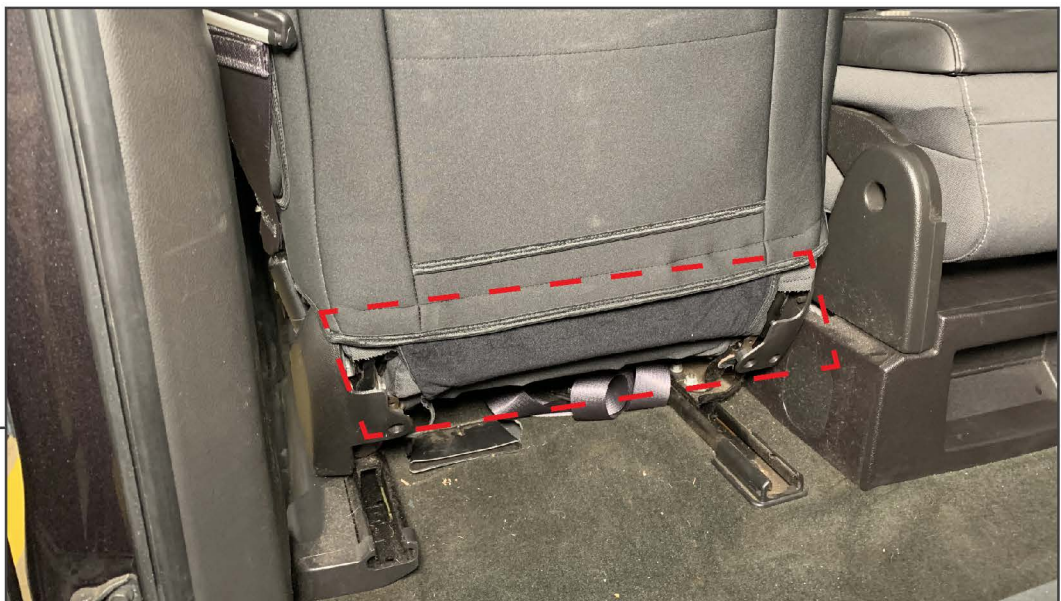
Drape the front seat cover over the front seat, ensuring the airbag cutout is facing out and the rear panel is flipped upwards. Route the Velcro in between the upper and lower seat cushion.

STEP 5



Tuck the (2) headrest holes in the cover under the (2) headrest mounting points on the seat.

STEP 6

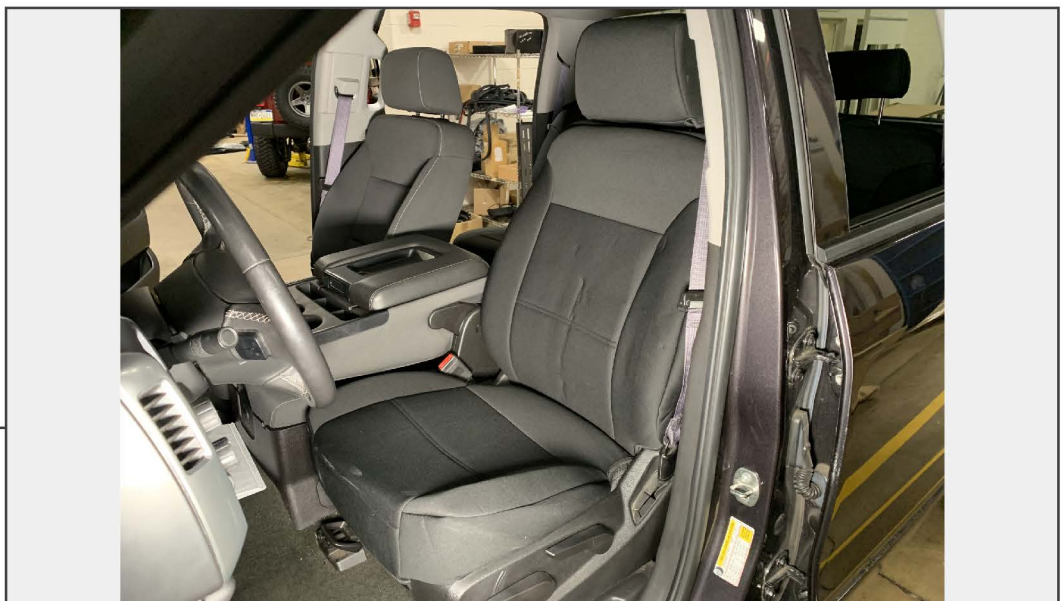


Secure the backrest seat cover to the seat using the attached Velcro along the bottom of the cover.



STEP 7

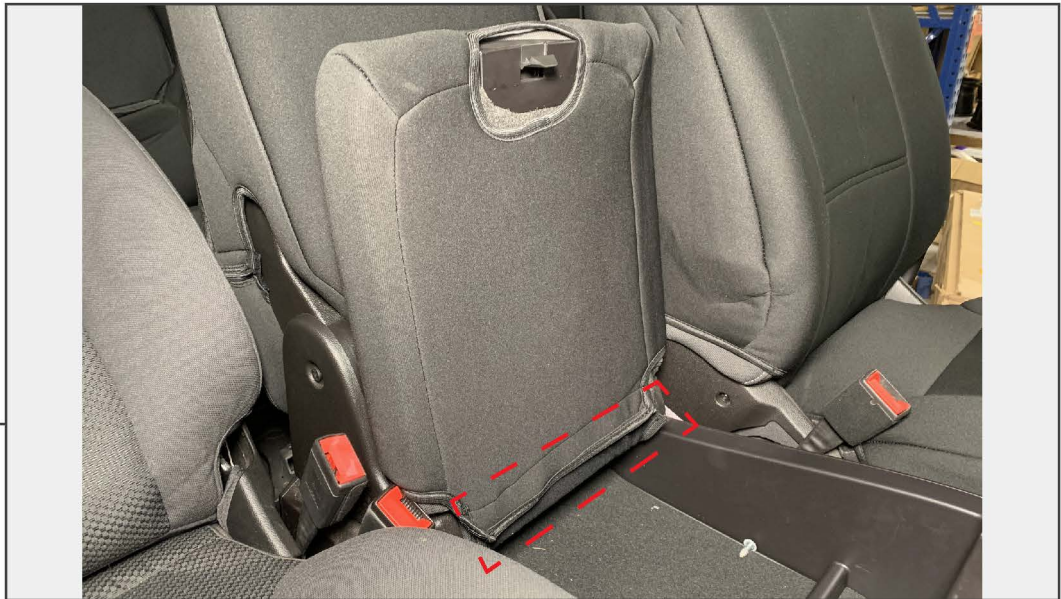
Place the front base cover to the front seat and tuck the (2) rear straps in between the backrest and the base towards the underside of the seat. Tuck the sides of the cover under the plastic trim for best fit. Latch and tighten the (2) straps under the seat, ensuring not to interfere with any under-seat components. Secure the (2) nylon straps to the sides of the seat to secure the sides.



STEP 8

Re-install the headrest to the seat. Repeat steps 1-8 to the remaining front seat.

**STEP 9
(CENTER
CONSOLE)**



Open the middle seat base storage area, and slide the cover onto the seat base storage area lid. Secure the cover using the attached Velcro along the bottom.

STEP 10



Drrape the center console seat backrest cover over the backrest. Secure the cover into place using Velcro on each side of the cover.

Installation is now complete.