



Installation Instructions

Part No. **1430**

Product: Running Boards

Application: **Chevrolet Silverado Single cab**
2019 – Present

Level of Difficulty: **1** 2 3 4 5

Professional Installation Time: 60 Min.

DYI Installation Time: 120 Min

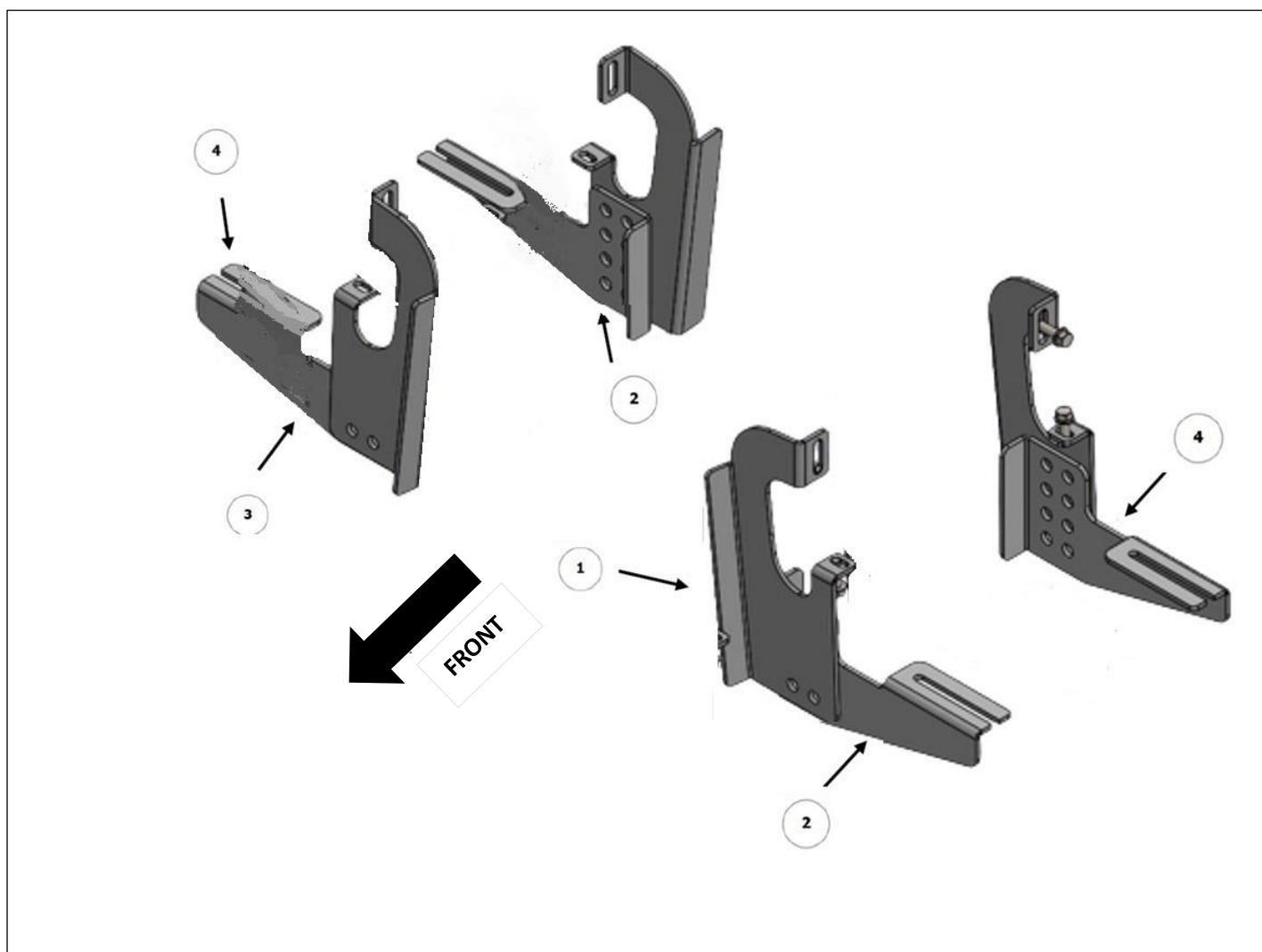
REV 3 04/01/25

Hardware	Torque Aluminum	Torque Steel to Steel
M6 Bolt	3 ft-lbs.	14 ft-lbs.
M8 Bolt	7 ft-lbs.	35 ft-lbs.
M10 Bolt	16 ft-lbs.	64 ft-lbs.
M12 Bolt	28 ft-lbs.	112 ft-lbs.

ATTENTION: Use correct torque settings to avoid damaging the running boards and or mounting brackets. Failure to do so will void your warranty. If you have any questions, please contact our technical team at 1-866-717-6645

Attention: Please make sure that you have the latest instructions from *Romik.com*

QR Scan



1430

1



DRIVER SIDE
FRONT-1_CENTER-1_REAR-1 BRACKET
2 x QTY

2



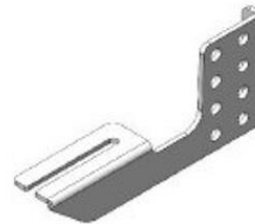
DRIVER SIDE
FRONT-2_CENTER-2_REAR-2 BRACKET
2 x QTY

3



PASSENGER SIDE
FRONT-1_CENTER-1_REAR-1 BRACKET
2 x QTY

4



PASSENGER SIDE
FRONT-2_CENTER-2_REAR-2 BRACKET
2 x QTY

HARDWARE

5



M10x25 FLANGE BOLT
8 x

6



M8x25 FLANGE BOLT
8 x

7



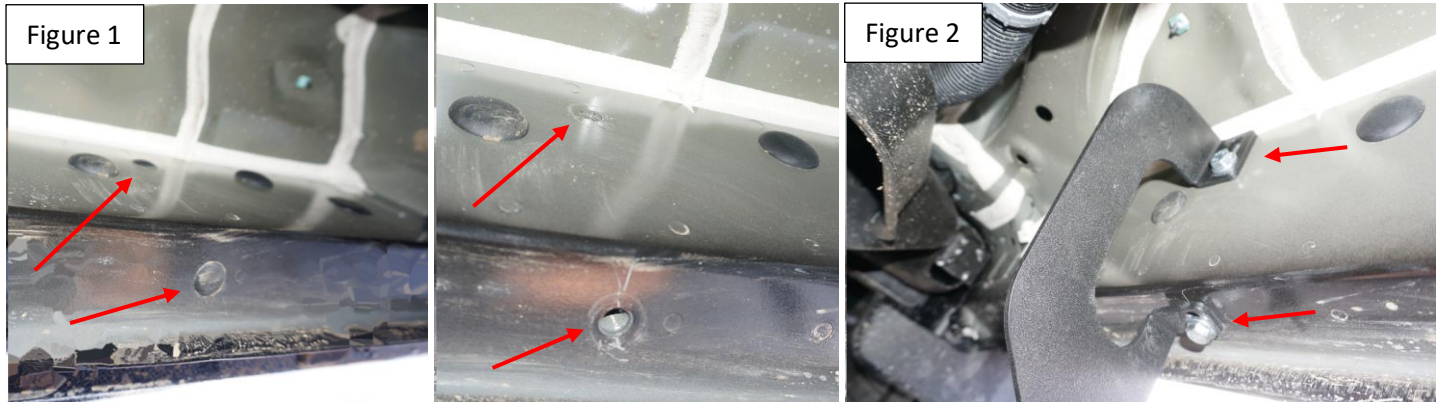
M10 FLANGE NUT
8 x

Installation Instructions 1430 Bracket Kit

Step 1: Locate mounting locations and hardware as per 1st page of this installation manual

Step 2: Remove factory rubber plugs as shown on Figure 1.

Step 3: Install brackets using supplied M8 hardware Figure 2. **Single Cab models use 2 brackets per side.** Do not tighten



Step 4: Proceed to last page of this manual for running board install instructions and torque values

NOTE: Make sure “clamping” plates are properly installed on running boards.

For Technical support please call our team at 1-866-717-6645 and one of our experts will assist you with this installation.

Thank you for choosing Romik

Installation Instructions Running Boards

NOTE: Use of power tools will damage the bottom of the running board and void your warranty.

Step 1: loosen the M8 hardware on back of the running boards.

Step 2: Slide running board onto brackets

Step 3: Tighten hardware to 7 ft lbs.

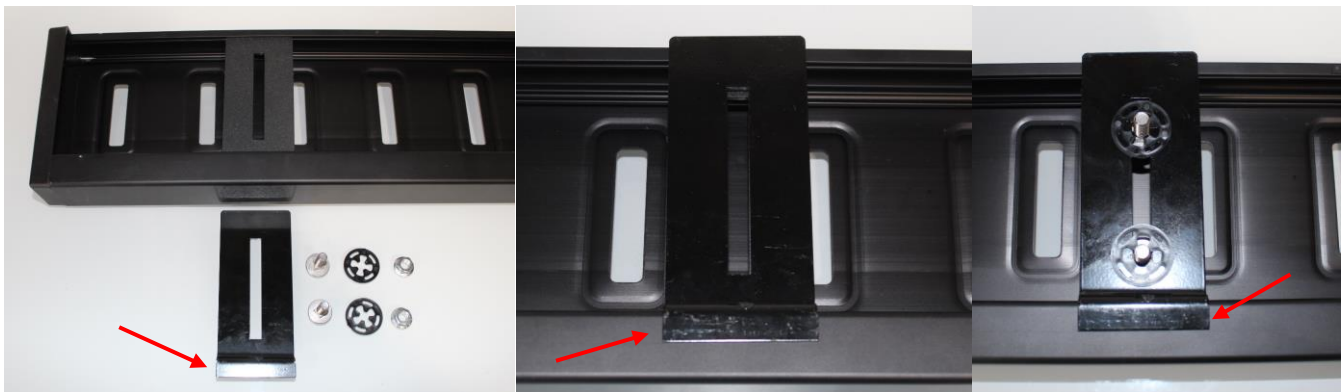


ROF/RPD/ROB Running boards

Step 1: Place clamping plate on top of running board as shown below. Make sure clamping plate sits correctly on running board surface.

Step 2: Install carriage bolts and plastic retaining clips as shown below.

Step 3: Install and tighten hardware to 7 ft lbs.



Product Registration and Warranty Information

- Register your Romik products at <https://romik.com/productregistration>
- Warranty information at <http://www.romik.com/warranty>



Cleaning and maintaining your Romik Running boards

Cleaning and maintaining your running boards is important, apply a light coat of a quality carnauba wax at least 2X per year. Wash often with mild soap and make sure to remove all soap residue. Many car automatic carwashes use a strong soap, make sure to use enough water to remove all residue.

For video instructions on how to clean your Romik products please click here <https://romik.com/cleaning>