



CATBACK EXHAUST SYSTEM

(2019+ SILVERADO - 5.3L WITH OEM DUAL EXHAUST ;
EXCLUDING LONG BED)

INSTALLATION INSTRUCTIONS

CONTENTS

- (1) Front Pipe
- (1) Front Pipe Extension
- (1) Muffler
- (1) LH Over Axle Pipe
- (1) RH Over Axle Pipe
- (1) LH Tail Pipe
- (1) RH Tail Pipe
- (2) Exhaust Tips
- (2) 2.5" Ball Flanges (Tips)
- (4) 2.5" Band Clamps
- (2) 3" Clamps

TOOLS REQUIRED

- 13mm, 15mm, 17mm Sockets
- Ratchet
- Spray Lubricant

SKU # S145870



STEP 1

Locate and loosen (1) ball flange exhaust clamp in between the vehicle flex pipe and catalytic converter.

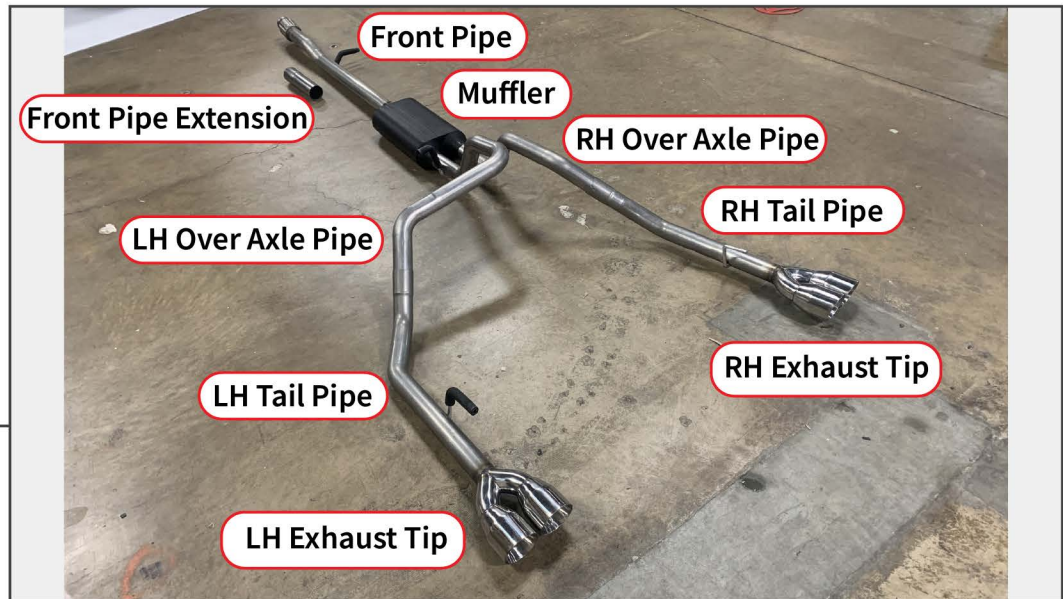
Note: This clamp will be reused.



STEP 2

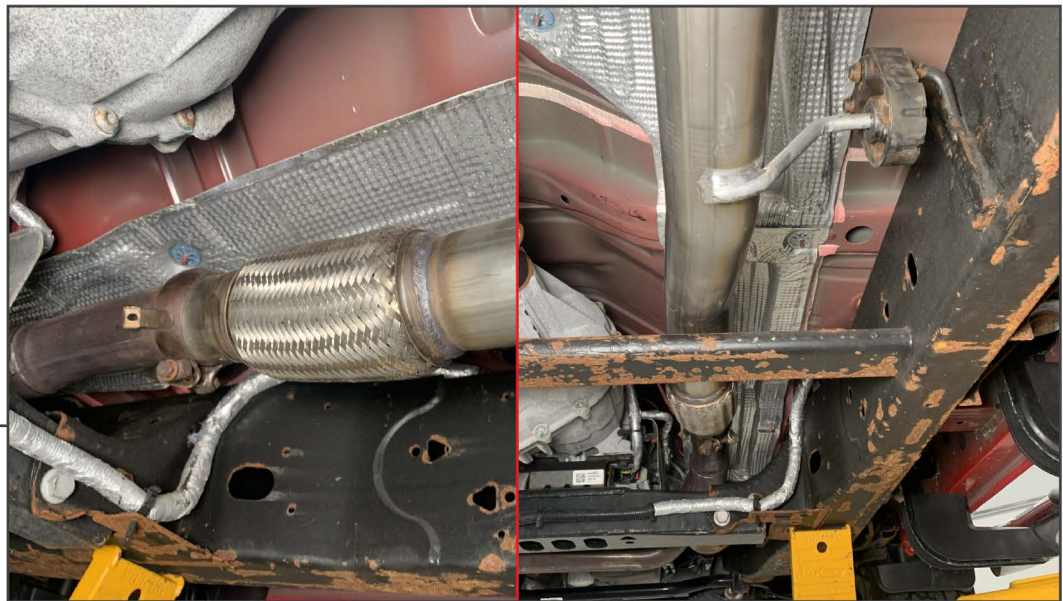
Unbolt pipe connecting the LH tail pipe to the remaining exhaust system. Spray all exhaust hangers with spray lubricant, and remove the exhaust from the hangers.

Note: The rubber hangers will be reused.



STEP 3

Lay out and identify all new exhaust components using the diagram above.



STEP 4

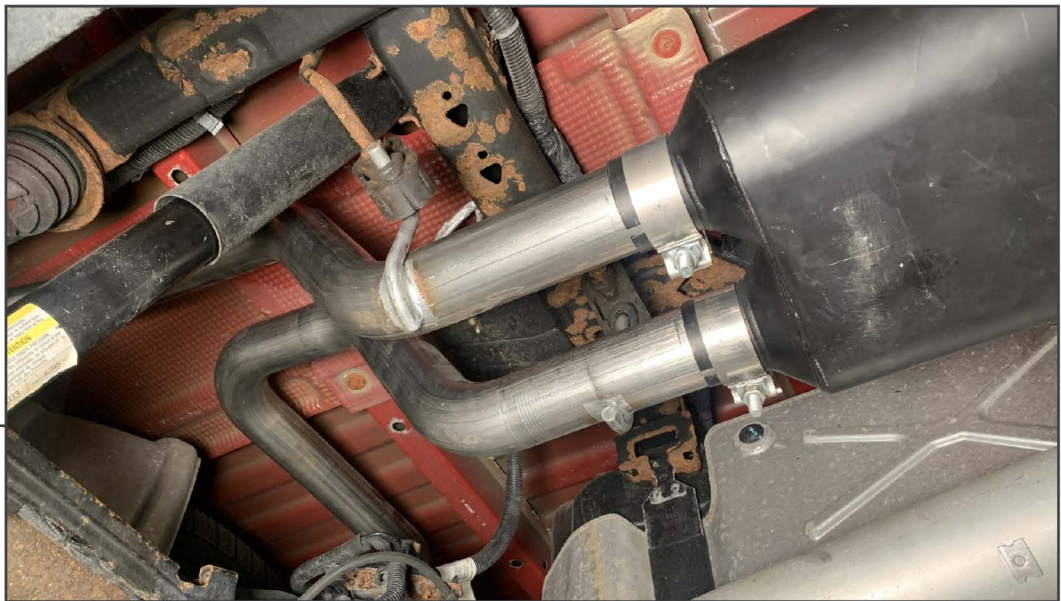
Align the front pipe to the vehicle catalytic converter pipe. Fit the front pipe hanger mount into the vehicle rubber hanger. Tighten the clamp enough for adjustments to still be made.



STEP 5

Install the muffler onto the front pipe using (1) 3" band clamp. Tighten the clamp enough for adjustments to still be made.

Note: For Crew Cab vehicles with 6.6' bed, install the front pipe extension in between the muffler and the front pipe using (2) 3" exhaust clamps.



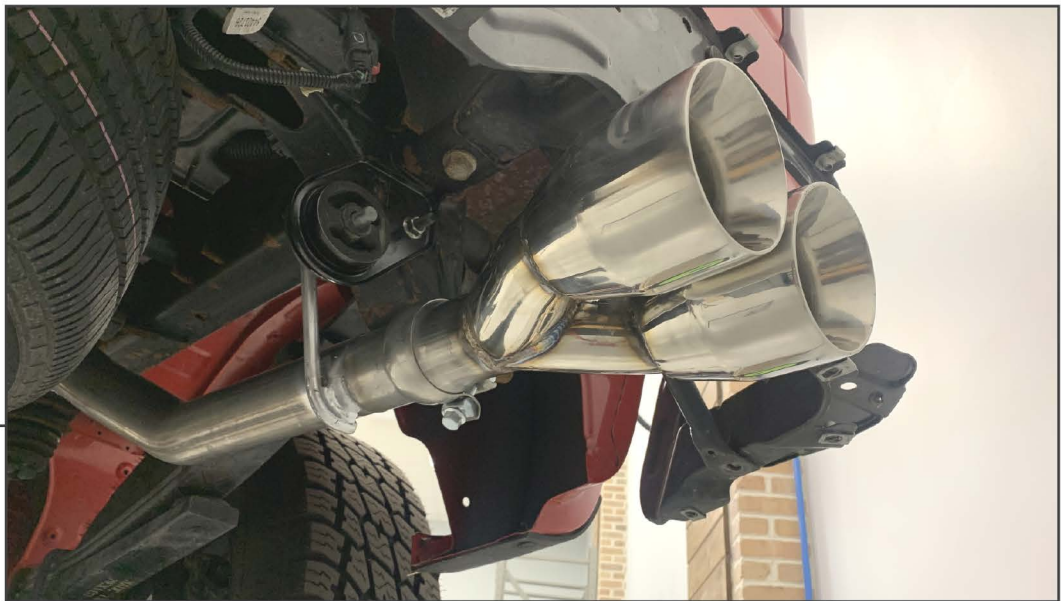
STEP 6

Install the LH and RH over axle pipes with clamps into the muffler, and into the rubber hangers attached to the vehicle frame. Tighten the (2) clamps enough for adjustments to still be made.



STEP 7

Install the LH and RH tail pipes with clamps to the over axle pipes on each side, and place the hanger mount into the rubber hangers attached to the frame. Tighten the (2) clamps enough for adjustments to still be made.



STEP 8

Install the LH and RH exhaust tips using (1) 2.5" ball flange clamp per side. Adjust the exhaust tips to fit to the cutout in the vehicle bumper. Once exhaust system is properly adjusted, tighten all clamps to 45 ft lbs.

Installation is now complete.