



MODULAR EXTREME HD GRILLE GUARD

(2014-2018 SILVERADO)

(2014-2018 SIERRA)

INSTALLATION INSTRUCTIONS

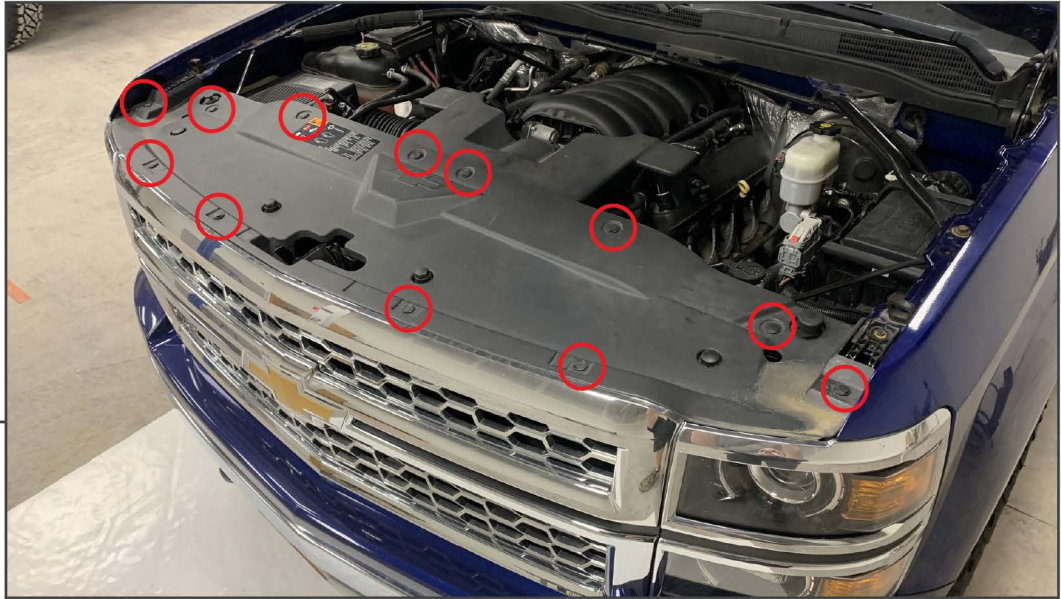
CONTENTS

(2) Front Push Bars
(1) Center Grille Guard
(1) LH Headlight Guard
(1) RH Headlight Guard
(1) Lower Cross Bar
(1) LH Upper Bracket
(1) RH Upper Bracket
(2) 'U' Brackets
(2) M6 Nut Plates
(2) Frame Rail Adapters
(2) Lower Grille Guard Mounts
(2) M12x1.75 Double Stud Plates
(2) M12x1.75 Single Stud Plates
(6) M12 Nuts
(6) M12 Flat Washers

(6) M12 Lock Washers
(4) M10x1.50 x 30mm Bolts
(4) M10 Lock Washers
(8) M10 Flat Washers
(4) M10 Nuts
(6) M8x1.25 x 25mm Bolts
(10) M8x1.25 x 30mm Bolts
(2) M8x1.25 x 30mm Allen Bolts
(18) M8 Lock Washers
(28) M8 Flat Washers
(18) M8 Nuts
(8) M6x1.00 x 25mm Bolts
(8) M6 Lock Washers
(8) M6 Flat Washers

TOOLS REQUIRED

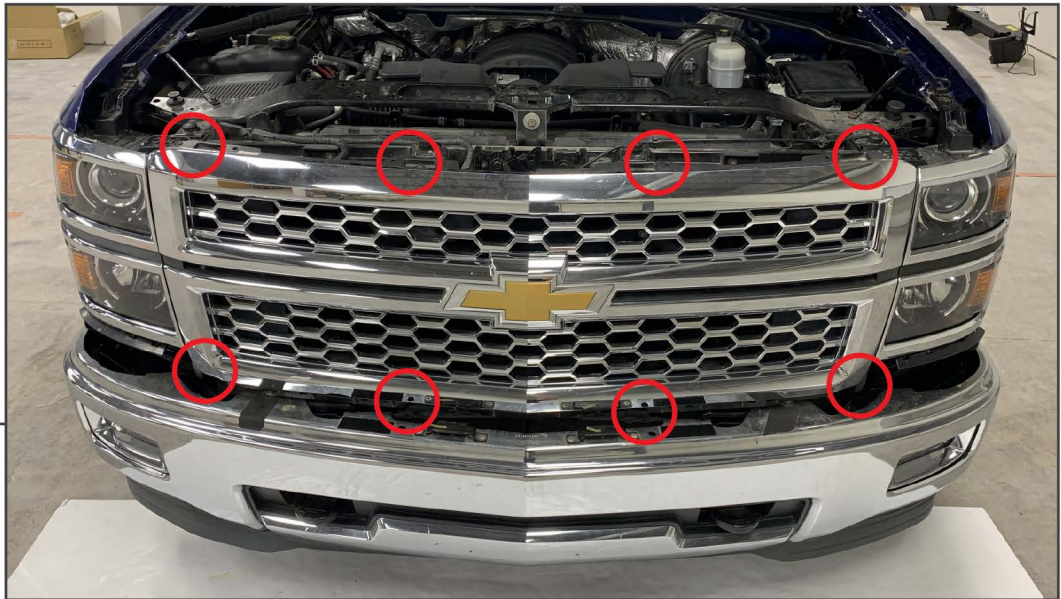
7mm, 10mm, 13mm, 15mm, 18mm,
19mm Sockets
Ratchet
Panel Removal Tool

**STEP 1**

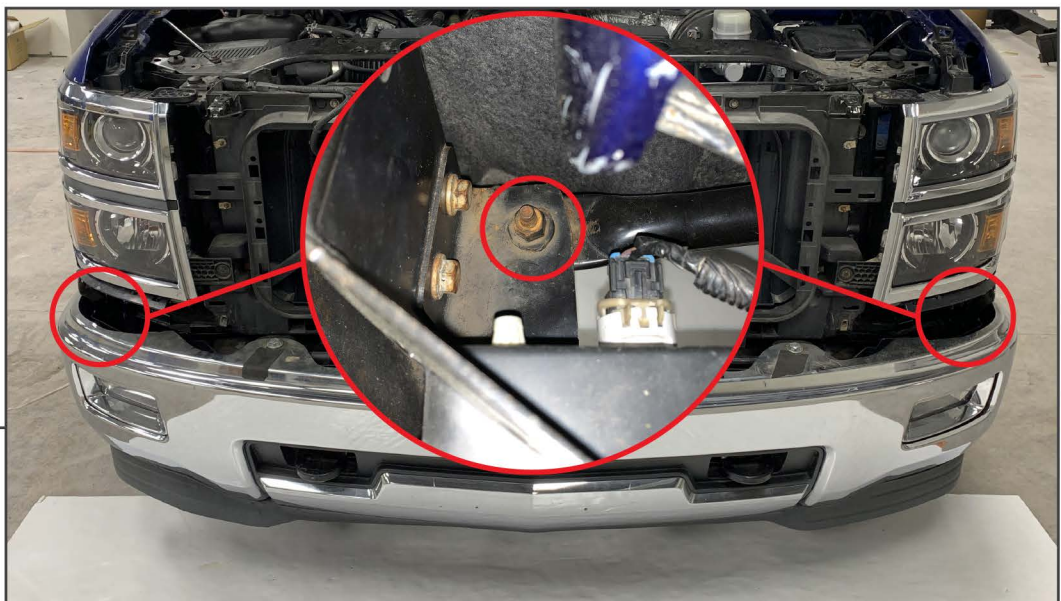
Open the vehicle hood. Remove (12) plastic push clips from the upper radiator cover. Remove the radiator cover from the vehicle.

**STEP 2**

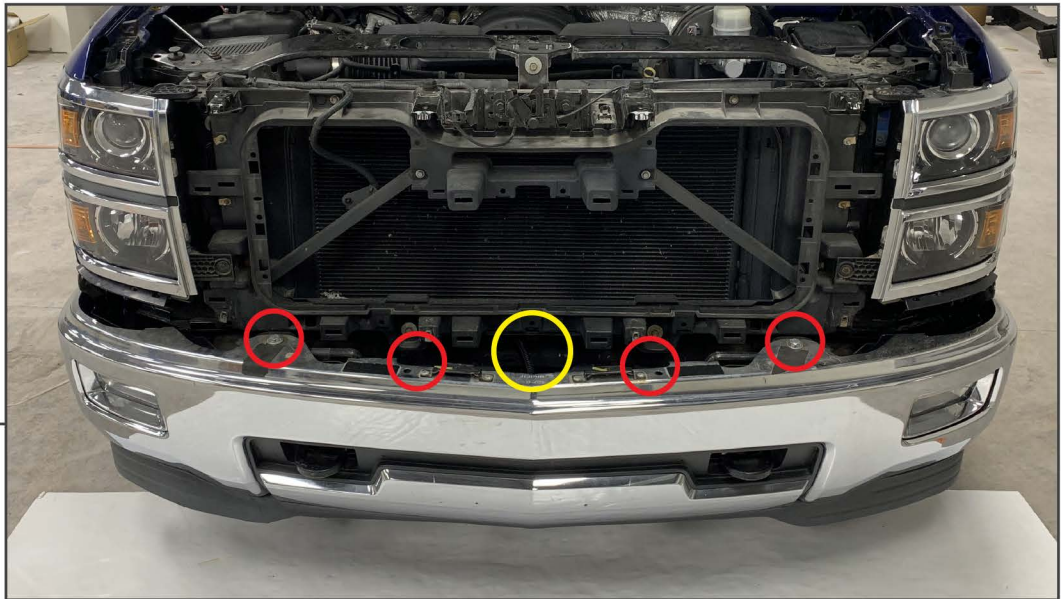
Remove (1) 7mm bolt on each side of the front bumper trim panel. Once the hardware is removed, pull the trim away from the vehicle and set aside.

**STEP 3**

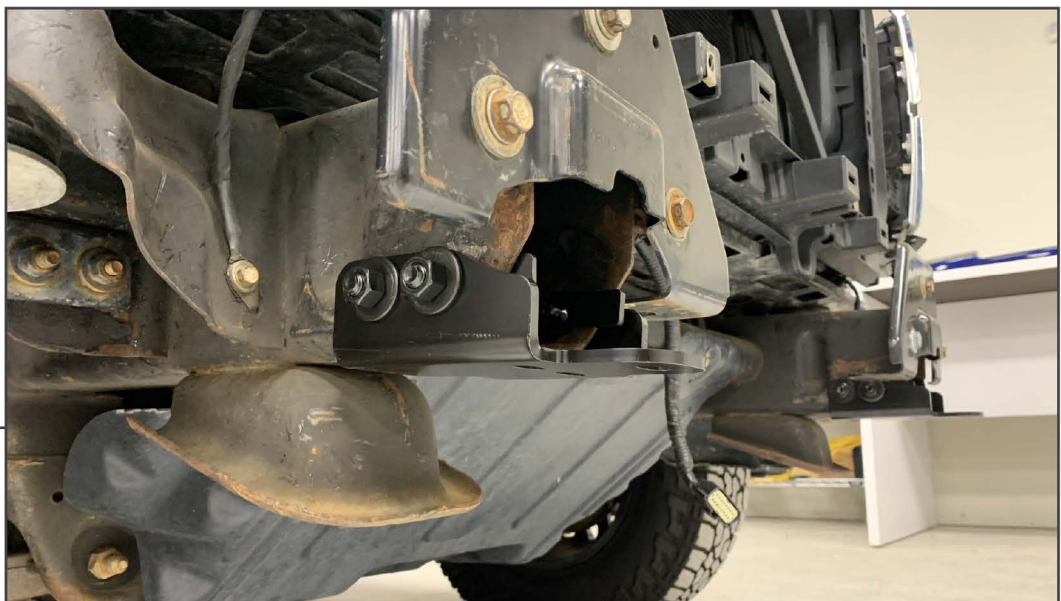
Remove (8) 10mm bolts from the grille assembly. Pull the grille assembly and set aside.

**STEP 4**

From under the vehicle, remove (1) 18mm bolt per side to separate the bumper from the side mounting brackets.

**STEP 5**

Unplug the fog light harness from the center of the front bumper, if applicable. Remove (4) 18mm bolts from the front of the bumper. Lift and remove the bumper from the vehicle.

**STEP 6**

Remove the front tow hooks from the frame rails, if applicable. Align the included frame rail adapters to the existing bolt holes. Using (1) M12 double stud plate, (1) M12 single stud plate, (3) M12 flat washers, (3) M12 flat washers, and (3) nuts, secure the frame rail adapters to the vehicle. Tighten until secure. **Note: The frame rail adapters are identical.**

Repeat this step for the opposite side of the vehicle.

STEP 7

With each frame rail adapter installed, re-install the vehicle bumper using the original hardware. Secure the lower mounting bracket to the frame rail adapter using (3) M8 x 25mm bolts, (3) M8 lock washers, and (3) M8 flat washers.

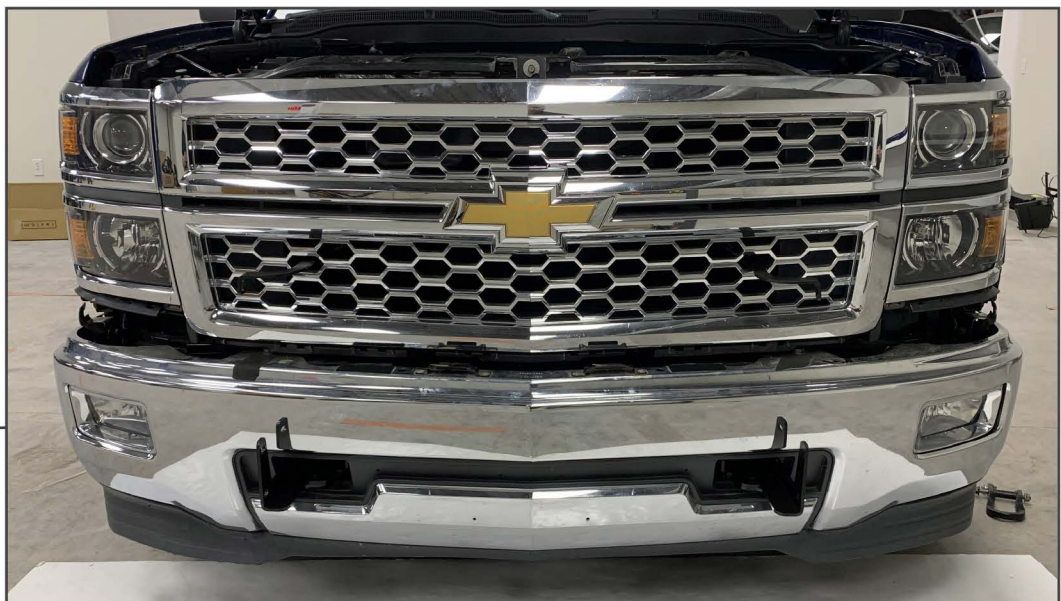
Repeat this step for the opposite side of the vehicle.

STEP 8

Locate the radiator support bars. Clamp the (2) 'U' Brackets to the radiator support bars using the (2) M6 nut plates. Secure using (2) M6 x 25mm bolts per bracket.

STEP 9

While holding the vehicle grille, insert the upper mounting brackets through the holes in the grille. The upper mounting brackets must be in line with the lower mounting brackets. Once aligned, tighten the 'U' Brackets and the upper mounting brackets to the M6 nut plates.

STEP 10

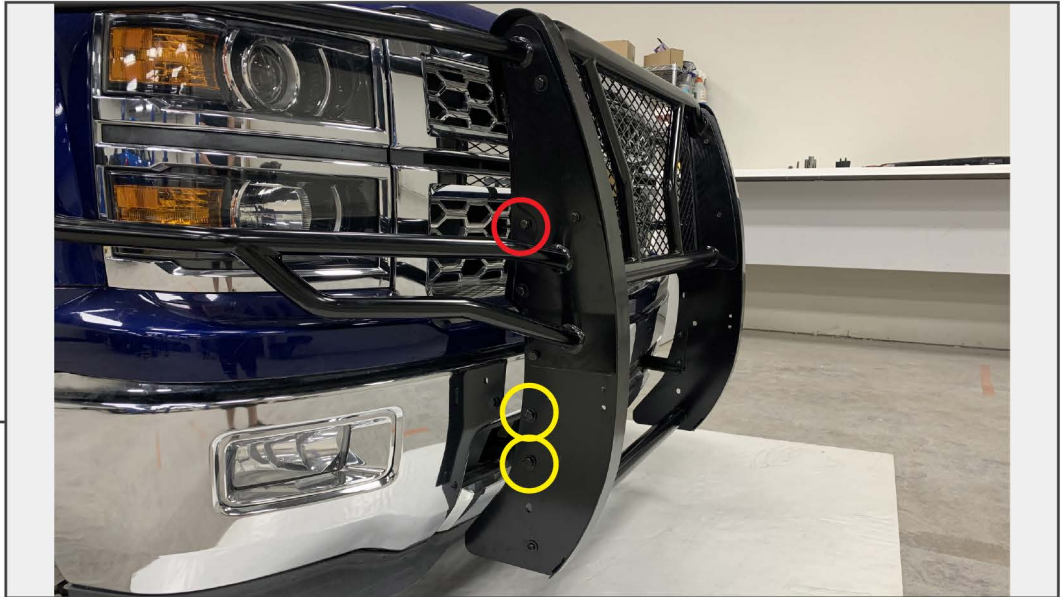
Install the vehicle grille to the vehicle using the original hardware.

**STEP 11**

Install the front bumper trim to the vehicle and secure using the original hardware.

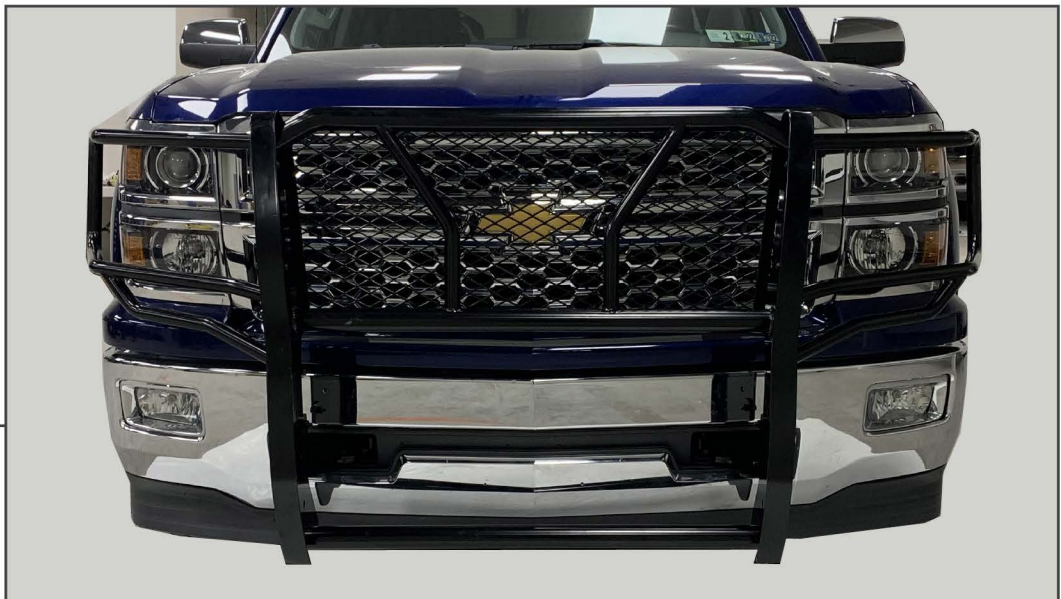
**STEP 12**

Place all brush guard components on a soft surface. Assemble the headlight guards, center grille guard, and front bumper bars using (4) M8 x 30mm bolts, (8) M8 flat washers, and (4) M8 lock nuts per side. Secure the lower cross bar using (2) M8 x 30mm Allen bolts, (2) M8 lock washers, and (2) M8 flat washers.

STEP 13

With assistance, lift the assembled grille guard to the vehicle mounting brackets, and secure the bottom of the grille guard using (2) M10 x 30mm bolts, (4) M10 flat washers, (4) M10 lock washers, and (2) M10 nuts per side. Secure the top of the grille guard to the upper brackets using (1) M8 x 30mm bolt, (2) M8 flat washers, (1) M8 lock washer, and (1) M8 nut per side.

Adjust the grille guard to the proper alignment, and tighten all mounting hardware.

STEP 14

Installation is now complete.