



TUBULAR UPPER CONTROL ARMS

(2007-2018 SILVERADO 1500)

(2007-2018 SIERRA 1500)

(2007-2018 TAHOE)

INSTALLATION INSTRUCTIONS

CONTENTS

- (1) LH Upper Control Arm
- (1) RH Upper Control Arm
- (2) M12 Nuts (Ball Joint)
- (2) M6 Lock Nuts (ABS Line)

TOOLS REQUIRED

10mm, 18mm, 21mm Sockets
Ratchet
Panel Removal Tool
Pry Bar
Pliers
Hammer
Floor Jack
Jack Stands
Grease Gun
Spray Lubricant

SKU # S183554

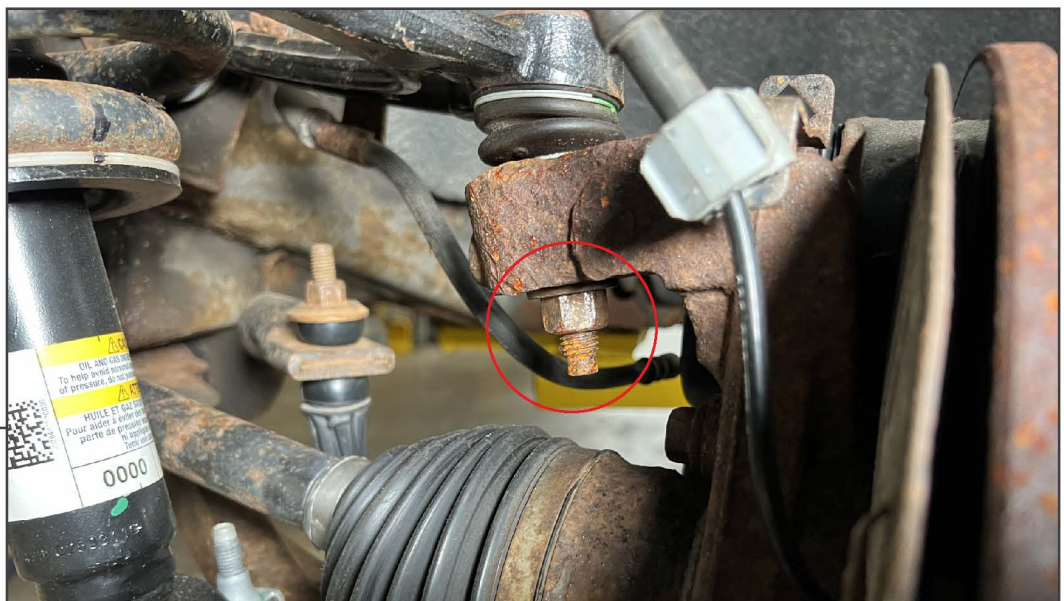
STEP 1



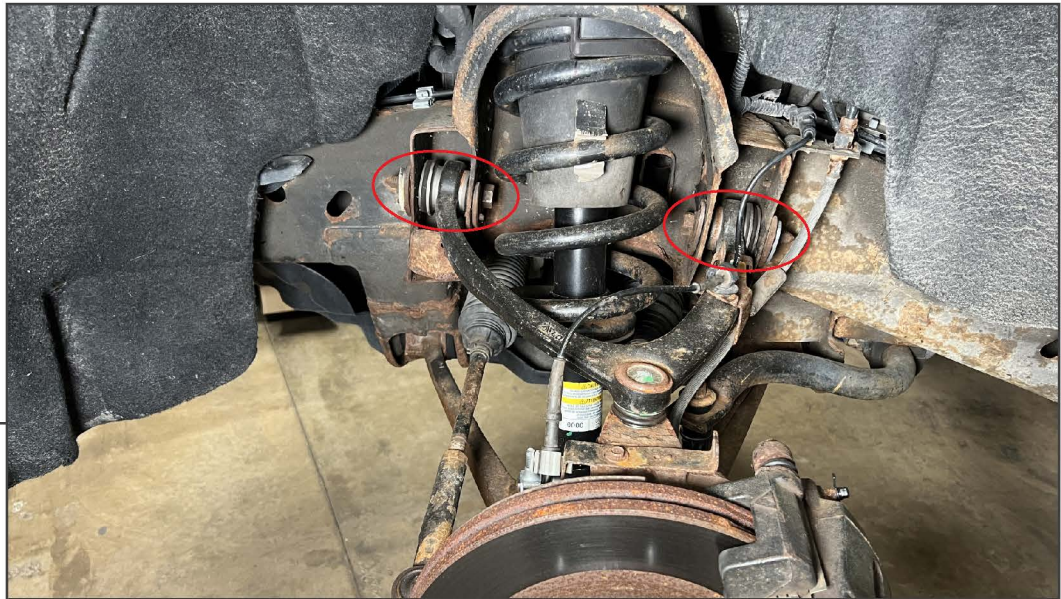
Lift and support the vehicle using a floor jack and jack stands. Remove the wheel from the vehicle.

Locate and remove (1) 10mm bolt from the brake hose & ABS line retaining bracket on the control arm.

STEP 2



Loosen (1) 18mm nut from the upper ball joint. Then, strike the steering knuckle to dislodge the ball joint from the steering knuckle.



STEP 3

Remove (2) 21mm bolts & nuts from the upper control arm to the vehicle frame. Remove the control arm from the vehicle.

Note: The control arm bolts have cam washers installed. Mark the location of the cam washer on the vehicle before removal. This will allow better initial alignment after the new control arm installation.



STEP 4

Fit the new control arm into the vehicle frame, and loosely secure reusing the original (2) 21mm bolts.

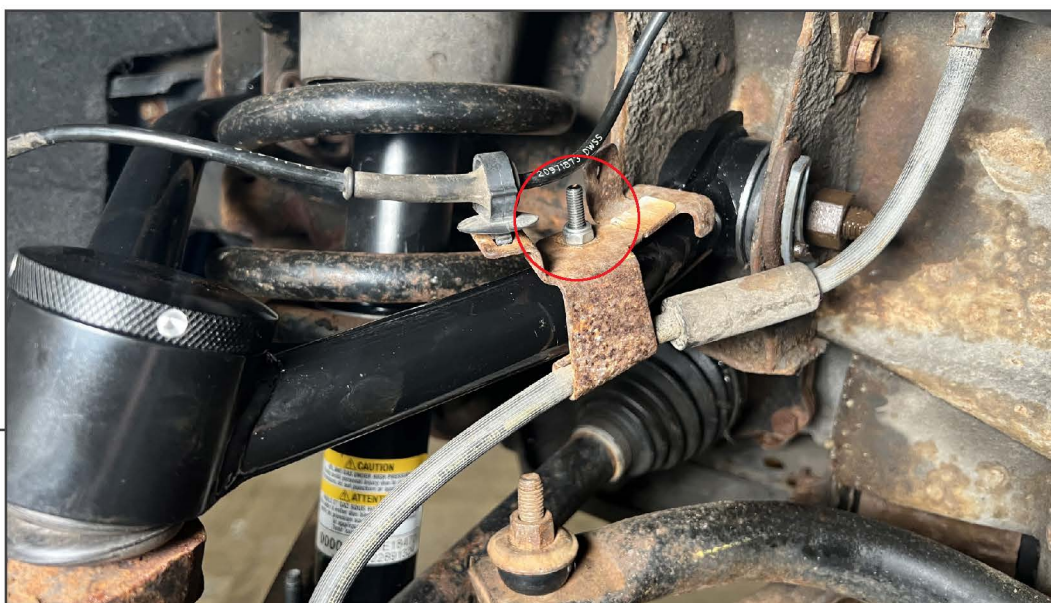
Note: Ensure during installation to take note to the cam washers alignment to the vehicle frame pins.

STEP 5



Secure the ball joint to the vehicle steering knuckle using the included (1) 18mm lock nut.

STEP 6



Secure the ABS & brake hose bracket to the new control arm using the included (1) 10mm lock nut.



STEP 7

Turn the ball joint cap counter-clockwise to remove the ball joint cap to reveal the grease fitting. Fill the ball joint with synthetic grease until full, do not overfill.

With the ball joint greased, re-install the cap.



STEP 8

Re-assemble the vehicle suspension components following steps 1-5 in reverse order.

Secure the upper control arm ball joint to the steering knuckle using the included (1) 18mm lock nut. Secure the brake line bracket to the control arm using the (1) M6 lock nut.