



CATBACK DUAL EXHAUST SYSTEM

(2019-2024+ SILVERADO / SIERRA 1500 - 5.3L)

INSTALLATION INSTRUCTIONS

CONTENTS

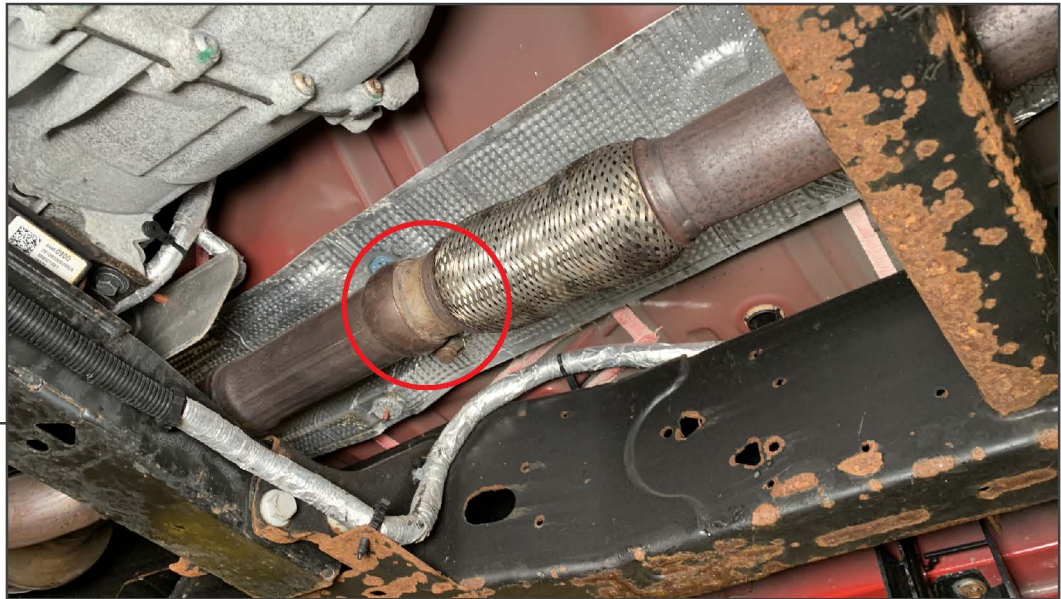
- (1) Front Pipe
- (1) Front Pipe Extension
- (1) Muffler
- (1) LH Over Axle Pipe
- (1) RH Over Axle Pipe
- (1) LH Tail Pipe
- (2) Side Exit Pipes
- (2) Rear Exit Pipes
- (2) Exhaust Tips
- (2) 3" Exhaust Clamps
- (7) 2.5" Exhaust Clamps
- (1) Plastic Hanger
- (1) Hanger Mount
- (2) Square Plate Washers
- (2) Small Star Washers
- (4) Large Star Washers
- (1) M10 x 100mm Bolt
- (1) M10 Lock Washer
- (1) M10 Flat Washer
- (1) M10 Nut
- (1) Cable Tie

TOOLS REQUIRED

- 13mm, 15mm, 16mm Sockets
- Ratchet
- Spray Lubricant
- Floor Jack
- Jack Stands

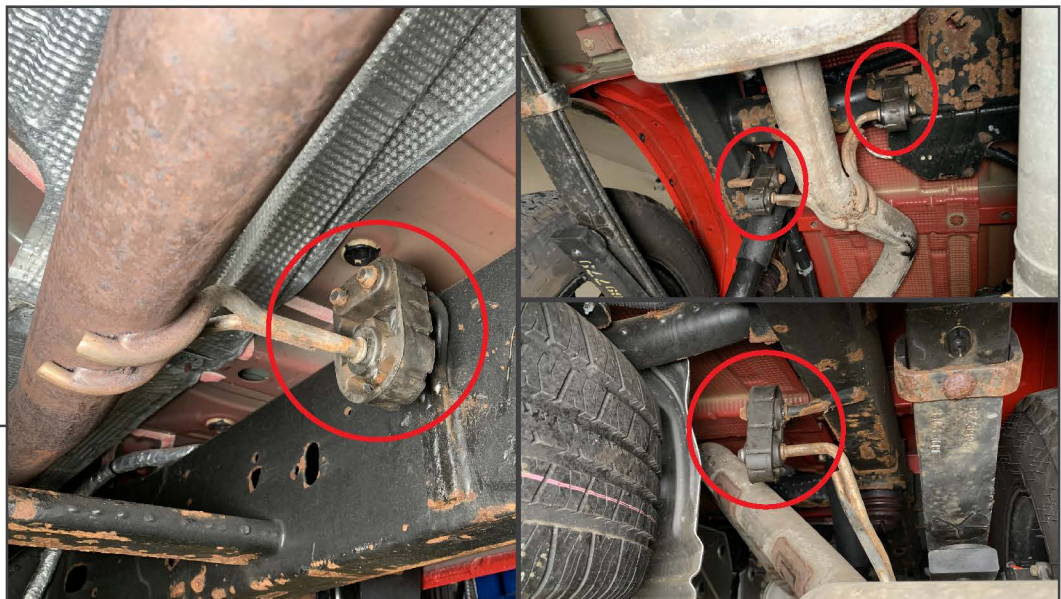
SKU # S186693
Edited: 07/24/2024

STEP 1



Lift and support the vehicle using a floor jack and jack stands. Locate the front exhaust clamp securing the exhaust system to the catalytic converter. Loosen the clamp using a 13mm socket.

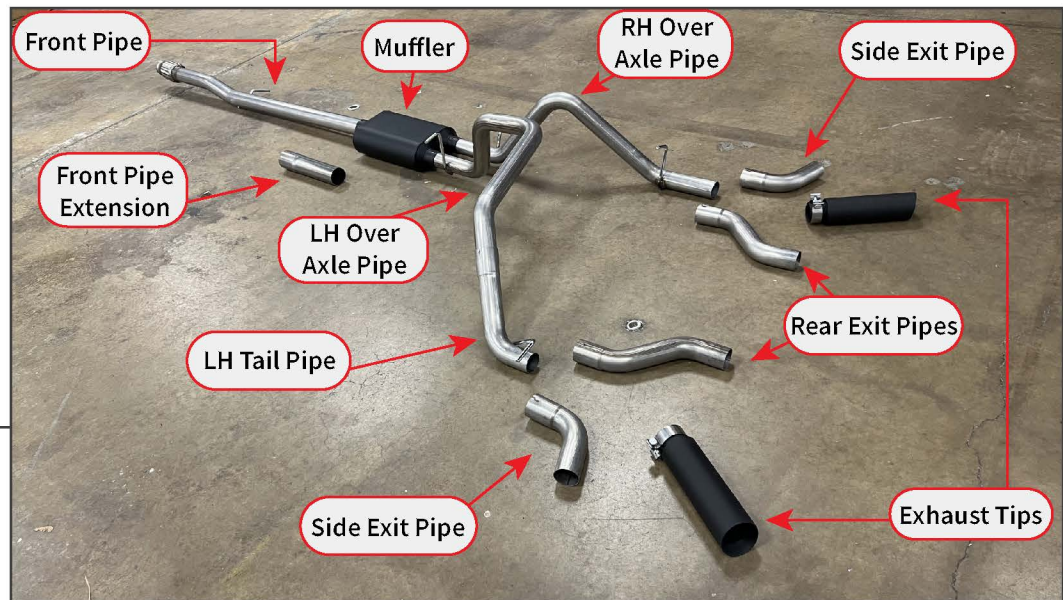
STEP 2



Working from the front of the vehicle towards the rear, disconnect the (4) rubber exhaust hangers from the exhaust system. Lower and remove the exhaust system from the vehicle. With the exhaust removed from the vehicle, remove the front clamp from the exhaust. This clamp will be reused.



STEP 3



Lay out and identify all exhaust components.

STEP 4



Install the (1) front pipe to the vehicle using the original front pipe clamp.

Place (1) 3" exhaust clamp on the end of the front pipe to prepare for the muffler installation.

Note: Depending on cab/bed configuration, the front pipe extension may be required after the front pipe.



STEP 5



Install the muffler to the front pipe and secure into place using the previously placed (1) 3" exhaust clamp. Do not fully tighten to allow for adjustment later.

Place (2) 2.5" exhaust clamps onto the rear section of the muffler to prepare for the over axle pipes.

STEP 6



Install the RH over axle pipe to the muffler. Do not fully tighten the exhaust clamp to allow for adjustment later. Fit the over axle pipe into the (2) vehicle rubber hangers.

Place (1) 3" exhaust clamp onto the end of the over axle pipe to prepare for the side/rear exit pipe.



STEP 7



Install the LH over axle pipe to the muffler. Do not fully tighten the exhaust clamp to allow for adjustment later. Fit the over axle pipe into the (1) vehicle rubber hanger.

Place (1) 2.5" exhaust clamp onto the rear section of the over axle pipe to prepare for the over LH tail pipe.

STEP 8



Install the LH over axle pipe (B) to the over axle pipe (A). Do not fully tighten the exhaust clamp to allow for adjustment later.

Place (1) 3" exhaust clamp onto the rear section of the over axle pipe (A) to prepare for the over axle pipe (B).



STEP 9



In between the vehicle leaf spring and the frame, mount the (1) exhaust hanger mount to the vehicle frame. Use the (2) square plate washers on each side of the frame, then add the hanger mount onto the inside of the frame. Secure using the included M10 hardware.

Install the included (1) plastic hanger onto the previously install exhaust hanger mount.

STEP 10



Install the LH tail pipe to the over axle pipe. Do not fully tighten the exhaust clamp to allow for adjustment later. Fit the LH tail pipe into the previously mounted plastic hanger.

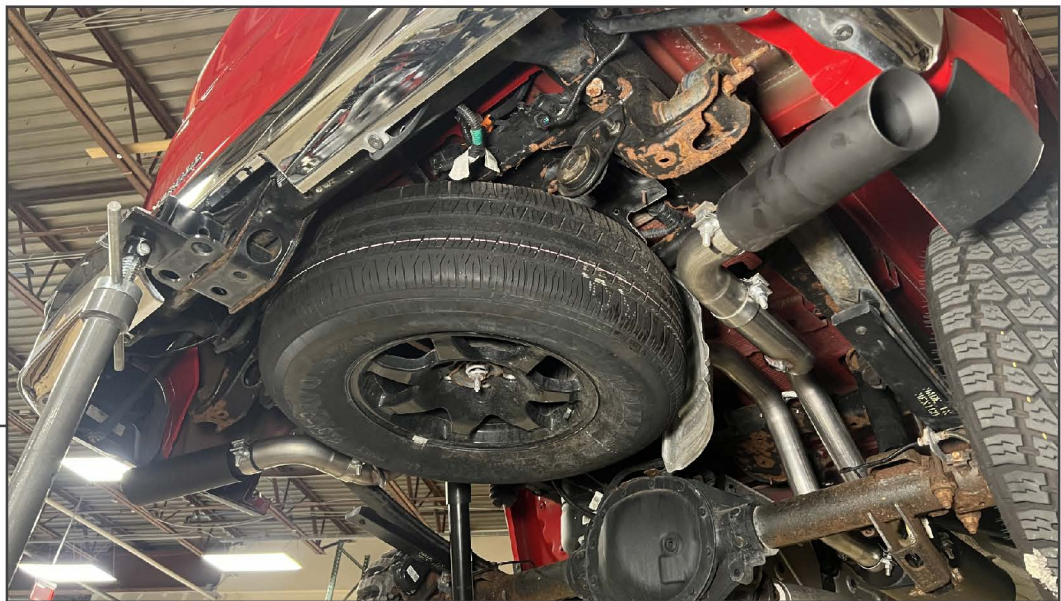
Place (1) 2.5" exhaust clamp onto the rear section of the LH tail pipe to prepare for the side/rear exit pipe.



STEP 11

Fit the desired side/rear exit pipe to the vehicle tail pipe. Loosely secure using the previously placed (1) 2.5" exhaust clamp.

Repeat this step for the opposite side of the vehicle.



STEP 12

Install (1) exhaust tip to the fitted exit pipe on each side of the vehicle. Secure using (2) 2.5" exhaust clamps.

Adjust the exhaust until both sides are properly fitted to the vehicle. Tighten all exhaust clamps to 45 ft.-lbs.

Installation is now complete.