



Installation Guide

Armor Grille
For 2016-2018 Silverado 1500

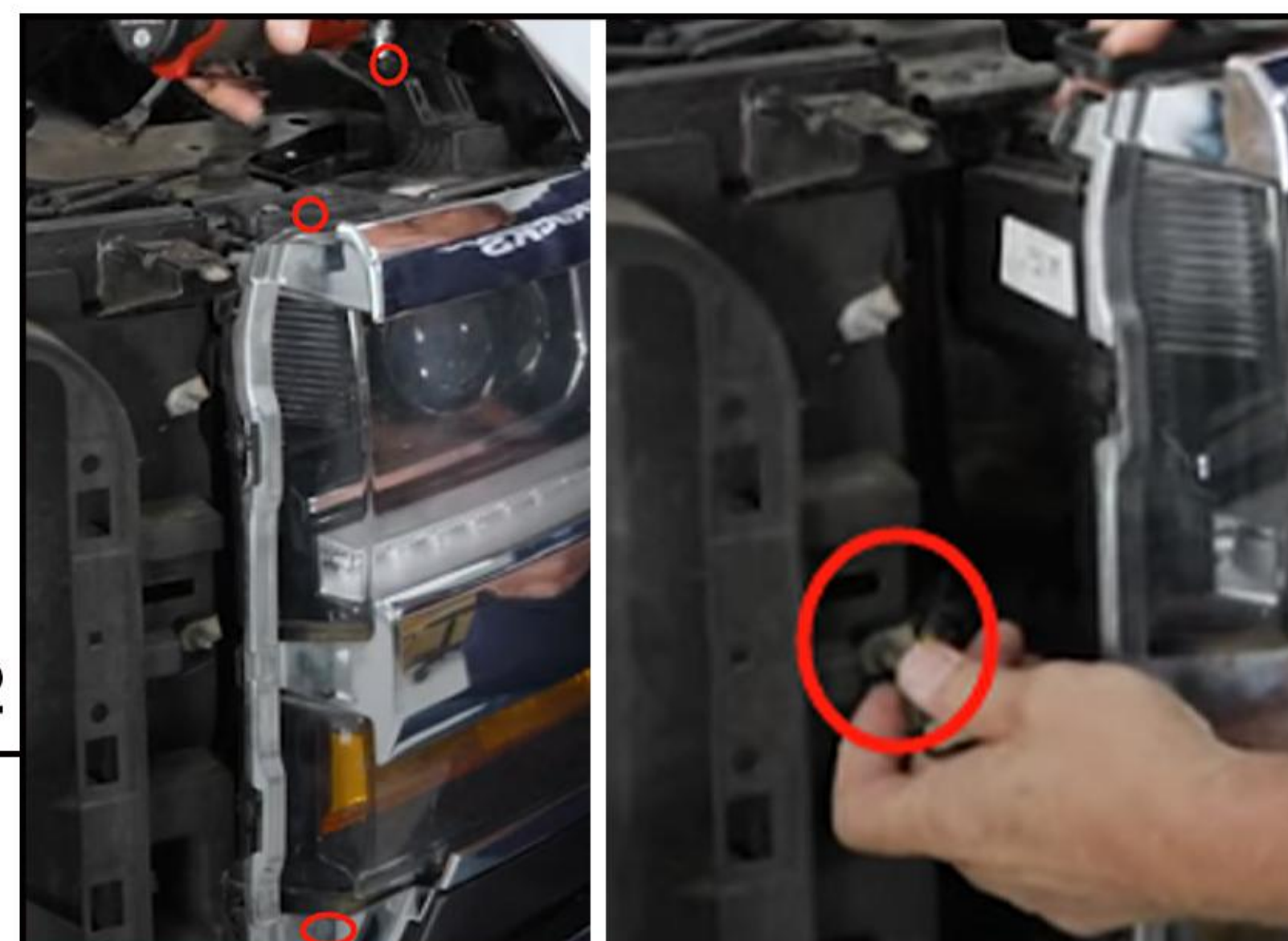
SKU # AMCHCA00118 & AMCHCA00119 & AMCHCA00120

STEP 1



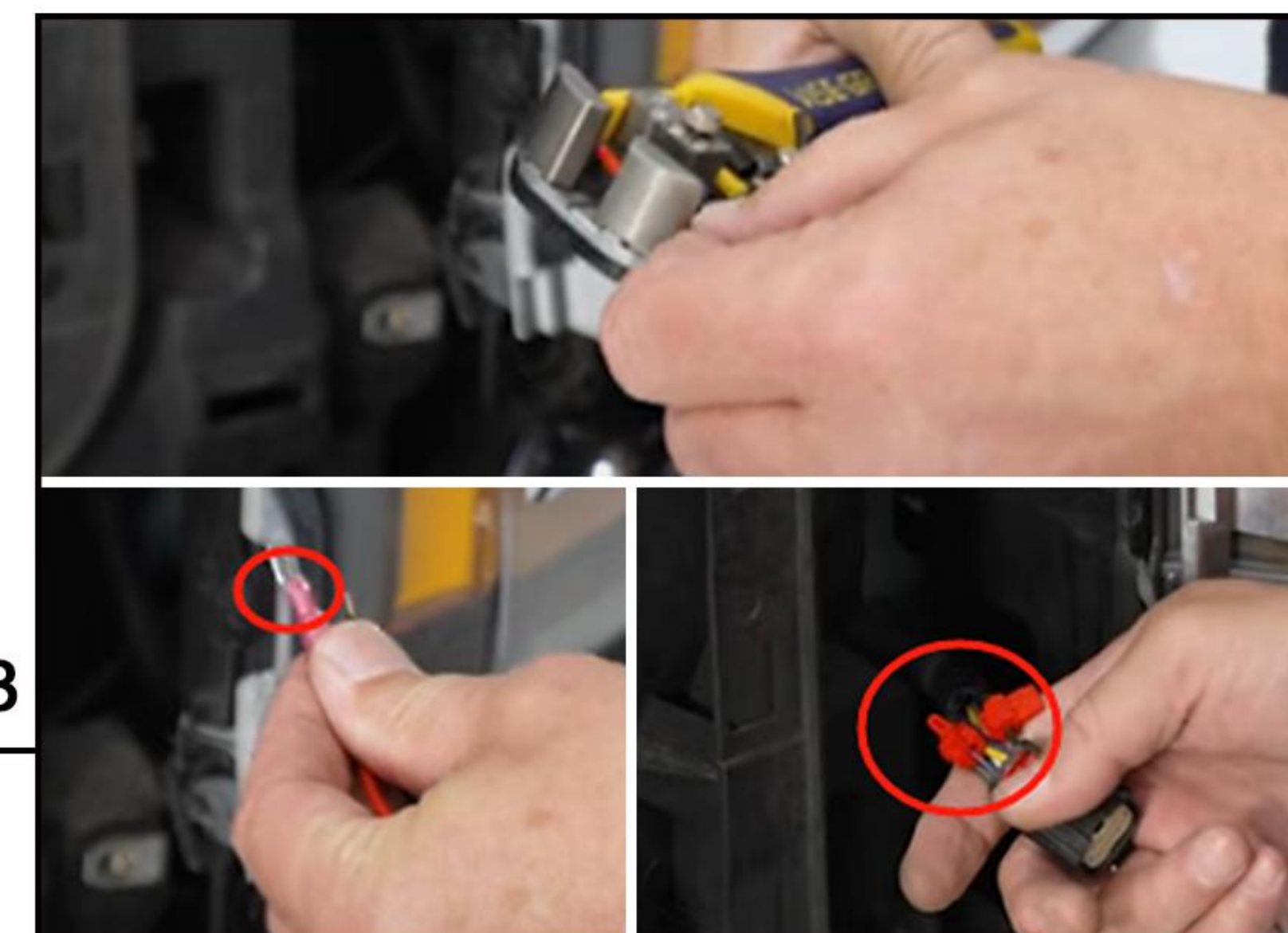
Open the hood, use a trim removal tool to remove 12 push pins to remove radiator cover. Then take four 10-millimeter bolts at the top first, grab the grille at the top and in the middle to pull it away.

STEP 2



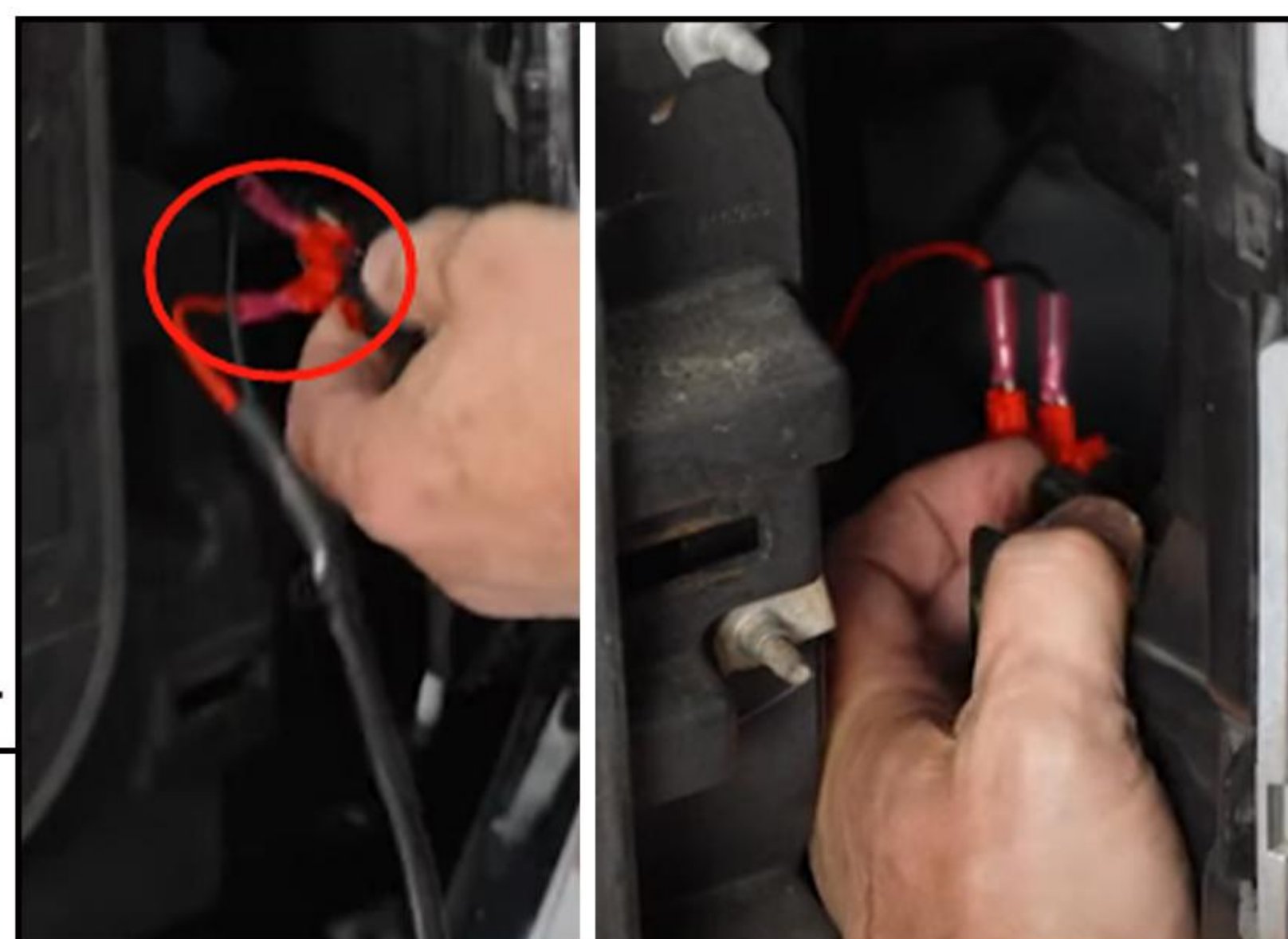
Remove 3 bolts (2 at the top, one at the bottom) on the passenger side headlight to swing the headlight apart so that will give access to actual harness.

STEP 3



Strip about a quarter of an inch off each wire harness for the grille and twist the ends to make sure they don't fray. Put these spade bits on the end of harness, then put T-connectors to our wires of the headlight like this in the picture 3.

STEP 4



Tap in the red wire to the gray and purple wire and black wire to the black wire. Then reattach our harness back to the headlight and push in on the red locking tab. Screw all bolts to restall the headlight.

STEP 5



Push the 6 metal retaining clips over the taps. Reattach the grille and tension in all of the retaining clips on the back and align it correctly.

STEP 6



Follow the step 1 in reverse order to complete the grille installation.