



# Installation Guide

Armor Grille  
For 2016-2018 Silverado 1500

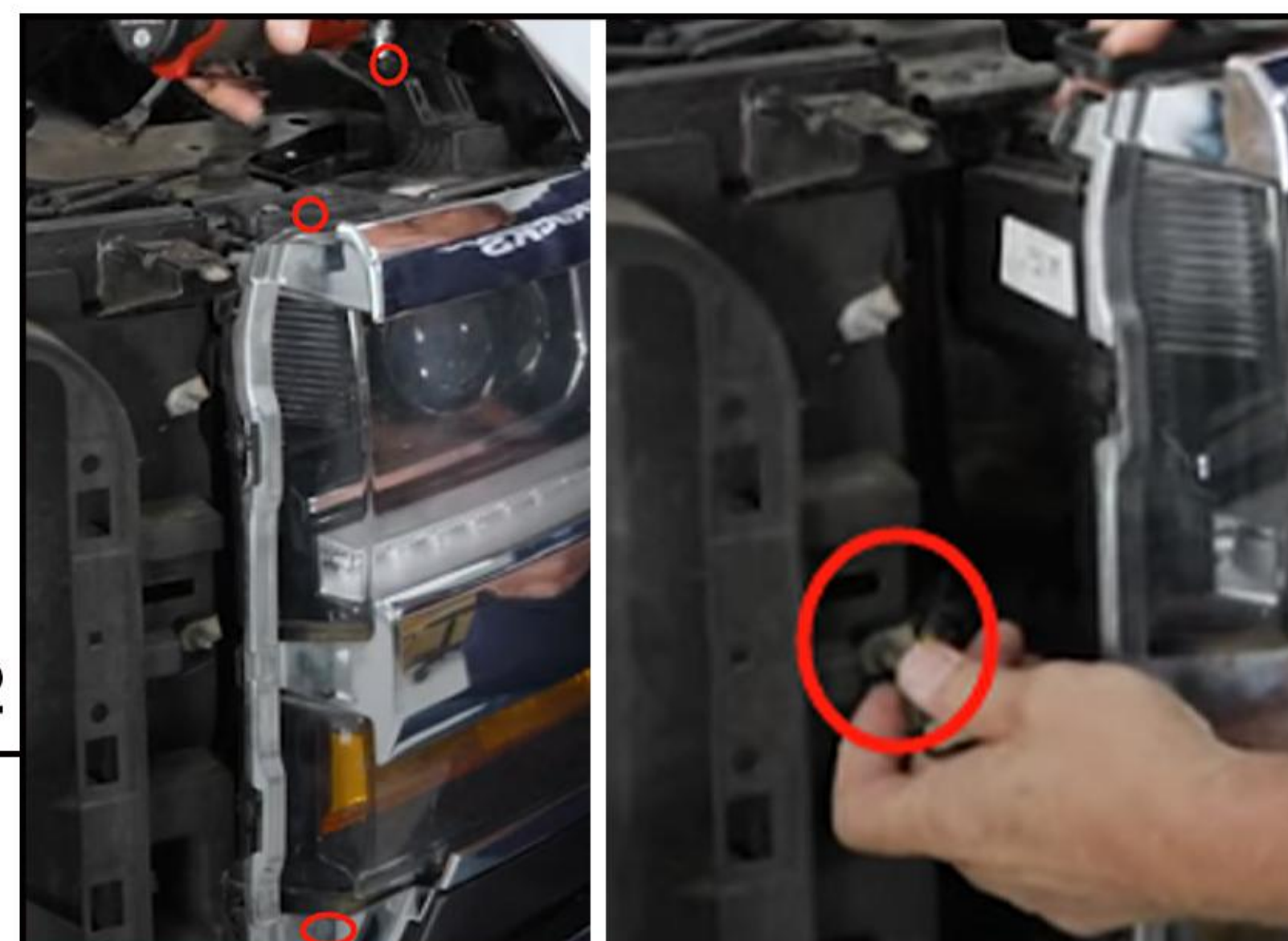
SKU # AMCHCA00121 & AMCHCA00122 & AMCHCA00123

## STEP 1



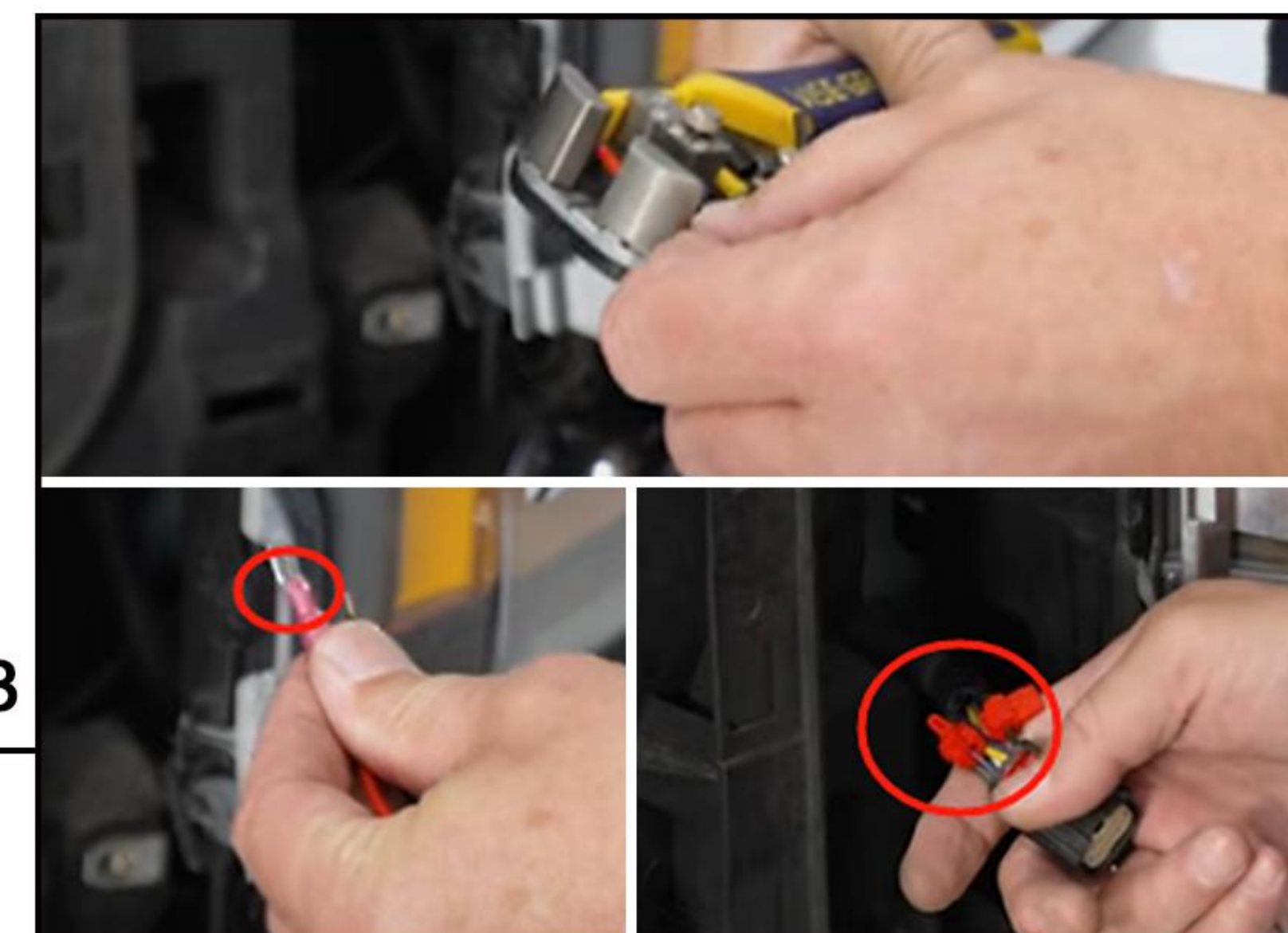
Open the hood, use a trim removal tool to remove 12 push pins to remove radiator cover. Then take four 10-millimeter bolts at the top first, grab the grille at the top and in the middle to pull it away.

## STEP 2



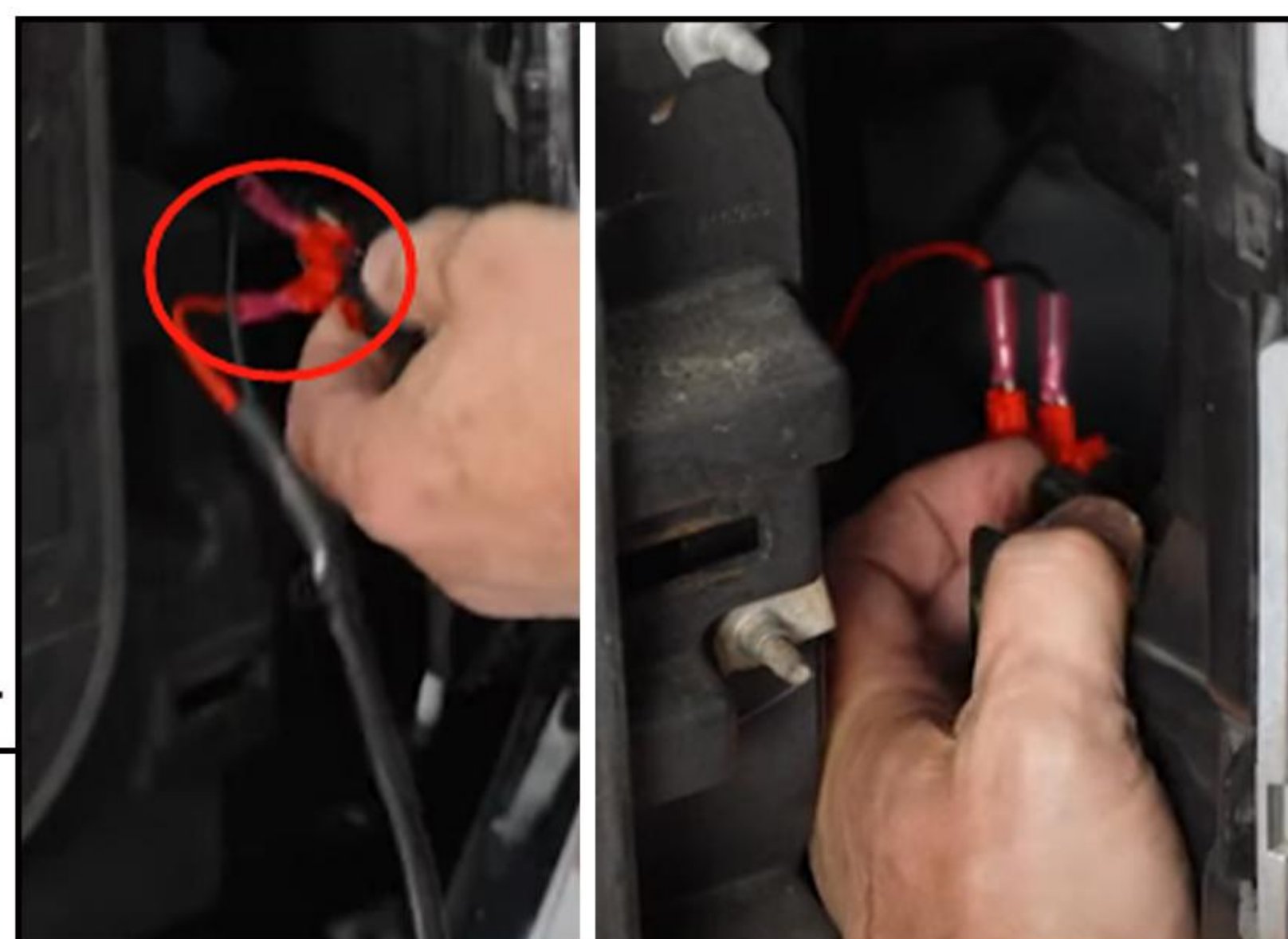
Remove 3 bolts (2 at the top, one at the bottom) on the passenger side headlight to swing the headlight apart so that will give access to actual harness.

## STEP 3



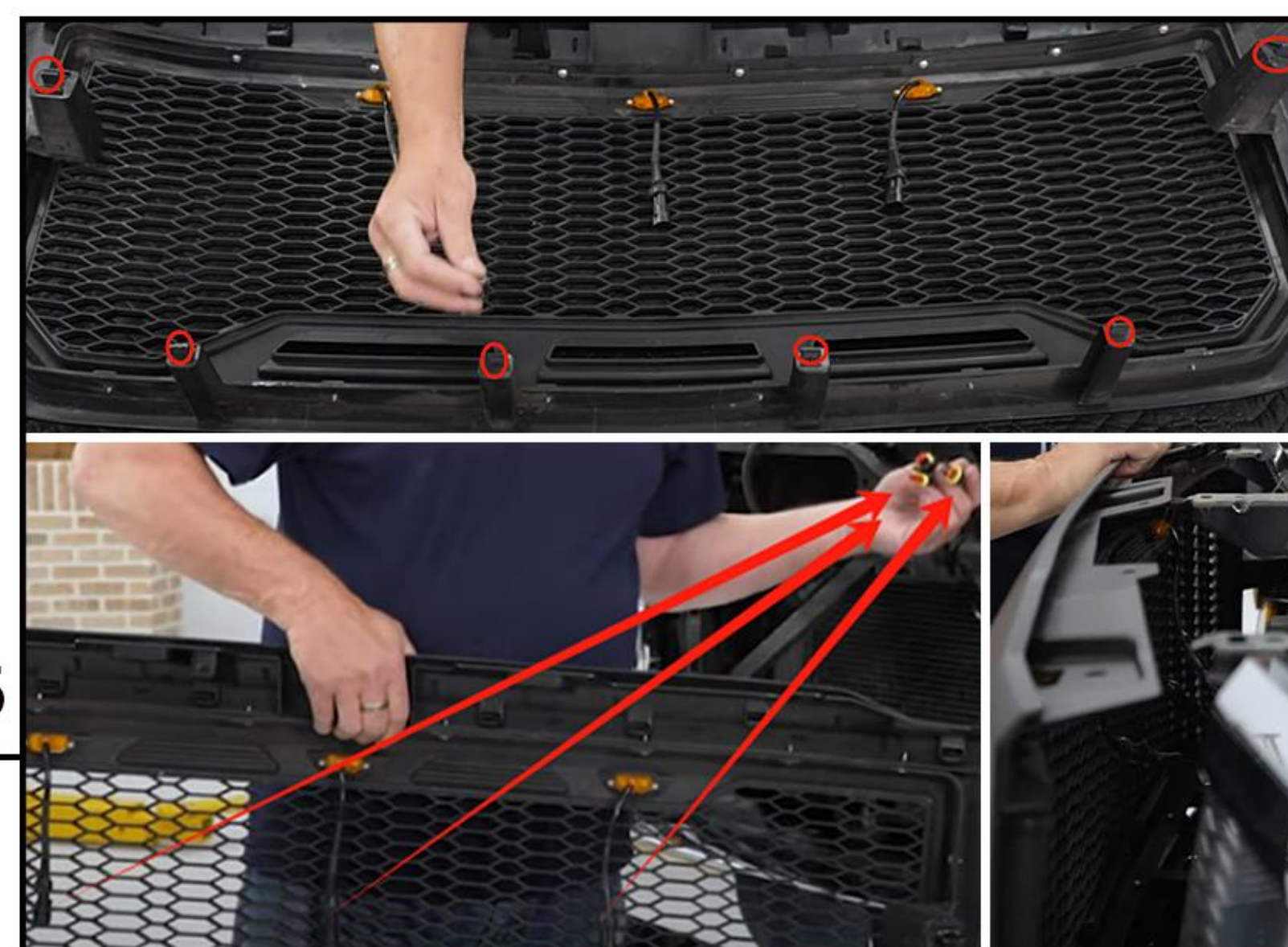
Strip about a quarter of an inch off each wire harness for the grille and twist the ends to make sure they don't fray. Put these spade bits on the end of harness, then put T-connectors to our wires of the headlight like this in the picture 3.

## STEP 4



Tap in the red wire to the gray and purple wire and black wire to the black wire. Then reattach our harness back to the headlight and push in on the red locking tab. Screw all bolts to restall the headlight.

## STEP 5



Take out the new grille, remove the emblem from the original grille and install it on the new grille. Push the 6 metal retaining clips over the taps. Connect each amber light to the wiring harness, install the clips on the bottom and sides and align the grille to the car.

## STEP 6



Follow the step 1 in reverse order to complete the grille installation.