

Instructions

Rear Swaybar kit

N.B: This instruction sheet should be used in conjunction with the workshop manual and proper safety procedures followed.

- Raise vehicle evenly and safely support with suitable stands.

Never rely on a Jack only.

- Start by hanging small u bolts over round Cross-Bar near spare tyre - you may want to remove spare tyre for easier install.

- Loosely bolt up link bracket to U-bolt with flat washers and nuts - refer image below. Bolt up larger bracket on LHS of vehicle.

- Place the smaller bracket on RHS.

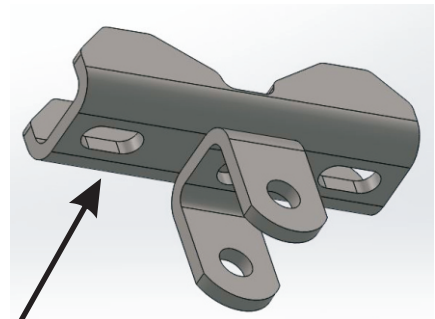
Application - Chev Silverado
- 2016

Always refer complete catalogue listing

Contents - 30mm swaybar x1

- Axle U bolts x2
- Axle brackets x2
- D mount bushings x2
- D mount saddles x2
- Washers for u bolts x4
- Link bracket x2
- Link bracket U bolts x2
- Washers for U bolts x4
- Complete swaybar link x2
- Swaybar link inner steel tubes x2
- Swaybar link washers x8
- Swaybar M12 link bolt x2
- Swaybar M12 link nuts x2
- Bracket for hand-brake cable x1
- Bolt 5/16 x1
- Nut 5/16 x1
- Grease

Grease link bushing internal ID before inserting steel tubes



Swaybar bracket - bolt up with supplied small U-bolts, flat washers and nuts

N.B: It is recommended that a licenced workshop or tradesperson carry out the above procedure and that workshop manual and relevant safety procedures are followed in addition to the above.

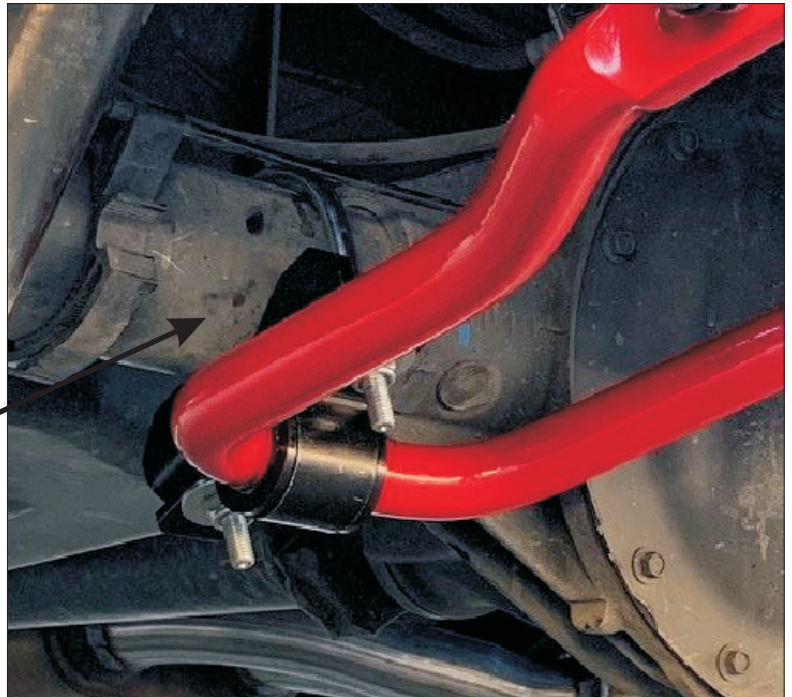
Instructions

Rear Swaybar kit

N.B: This instruction sheet should be used in conjunction with the workshop manual and proper safety procedures followed.

- Place larger U-bolts over Axle
Careful of any brake lines - do not squash.
- Grease supplied D bushing with supplied grease only.
- Mount up swaybar to axle with supplied saddle and axle bracket
Loosely bolt up with supplied washers and nuts.

Refer RH image



- Relocate hand-brake cable with supplied bracket, 5/16 nut and bolt - refer LH image.

N.B: It is recommended that a licenced workshop or tradesperson carry out the above procedure and that workshop manual and relevant safety procedures are followed in addition to the above.

Instructions

Rear Swaybar Kit

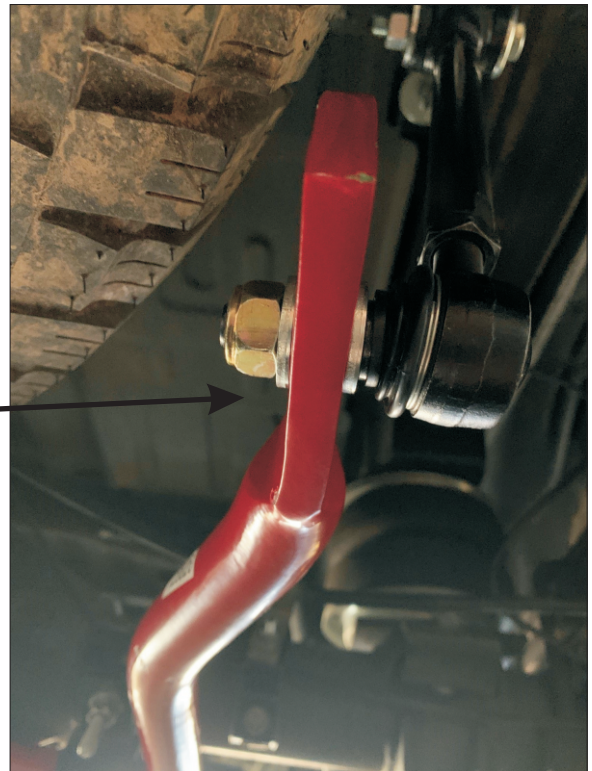
N.B: This instruction sheet should be used in conjunction with the workshop manual and proper safety procedures followed.



- Bolt up swaybar link with washers either side of blade. Refer RH image.

Note - supplied swaybar links are live height adjustable.

- Turn centre turn buckle slowly to remove any un wanted pre-load from swaybar - from one side to the other. Then tighten lock nuts.



- Note swaybar blade has 3 holes.

Refer above image for preferred setting. We recommend starting on the softer setting.

- Confirm swaybar is central and clear of any fouling. Tighten all nuts and bolts.
- Road-test and re-check.
- Re-check again after 100 miles.



N.B: It is recommended that a licenced workshop or tradesperson carry out the above procedure and that workshop manual and relevant safety procedures are followed in addition to the above.