



CATBACK EXHAUST SYSTEM

(2007-2013 SILVERADO 1500 - 5.3L)

(2007-2013 SIERRA 1500 - 5.3L)

INSTALLATION INSTRUCTIONS

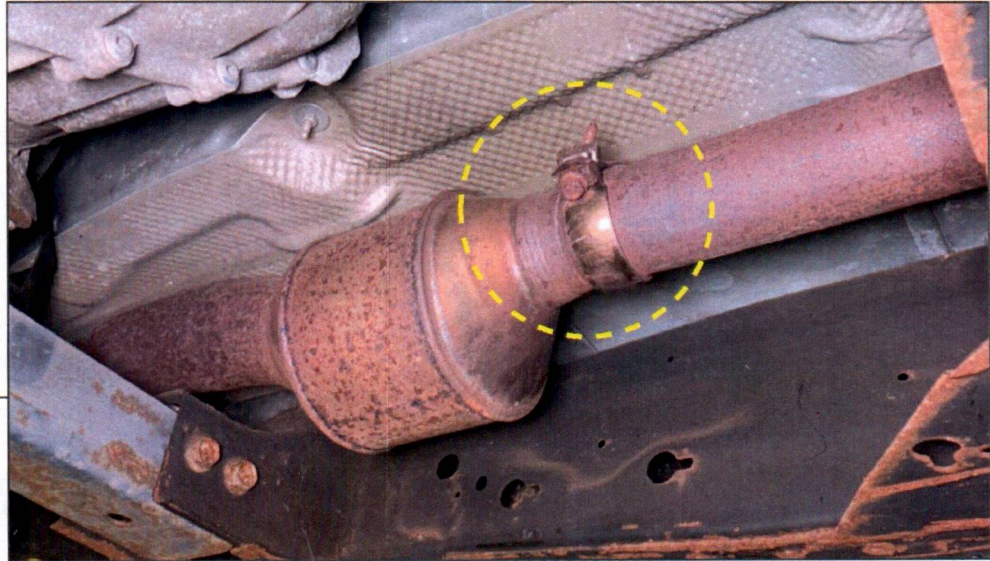
CONTENTS

- | | |
|---------------------------------|----------------------------|
| (1) Front Pipe w/ Flex Pipe | (1) Plastic Exhaust Hanger |
| (1) Front Pipe Adapter | (1) 'L' Hanger |
| (1) Front Pipe w/ 2 Bolt Flange | (1) M8 x 30mm Bolt |
| (1) Front Pipe w/ Hanger | (1) M8 Flat Washer |
| (1) Muffler | (1) M8 Lock Washer |
| (1) LH Over Axle Pipe | (5) Large Star Washers |
| (1) RH Over Axle Pipe | (1) Small Star Washer |
| (1) LH Tail Pipe | (1) M8 Nut |
| (2) Side Exit Pipes | (1) Square Washers |
| (2) Rear Exit Pipes | (1) Zip Tie |
| (2) Exhaust Tips | |
| (5) 2.5" Exhaust Clamps | |
| (3) 3" Exhaust Clamps | |
| (1) Ball Flange Clamp | |
| (1) Exhaust Clamp w/ Hanger | |

TOOLS REQUIRED

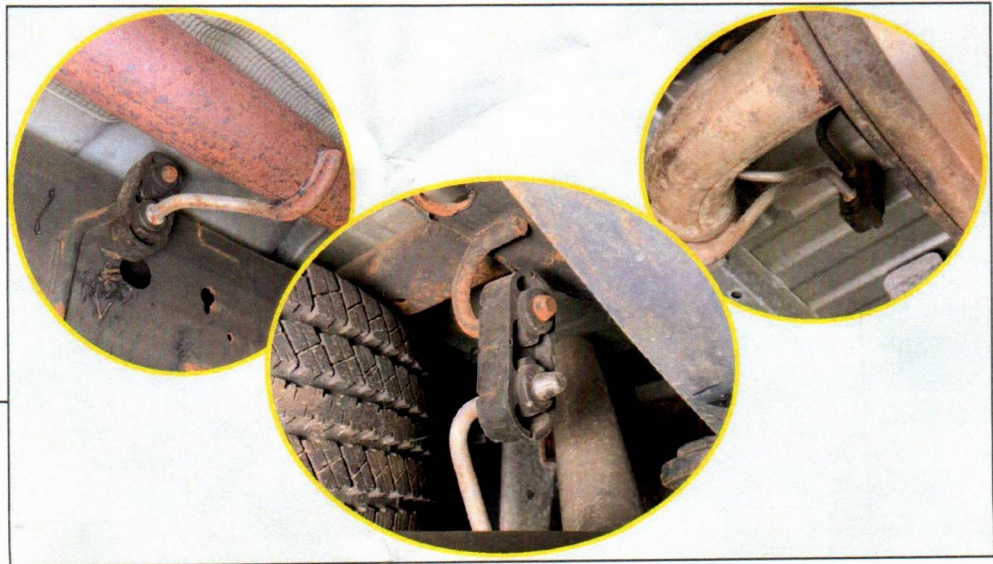
-
- 13mm, 15mm, 16mm, 17mm Sockets
 - Ratchet
 - Spray Lubricant

SKU # S212929 / S212930



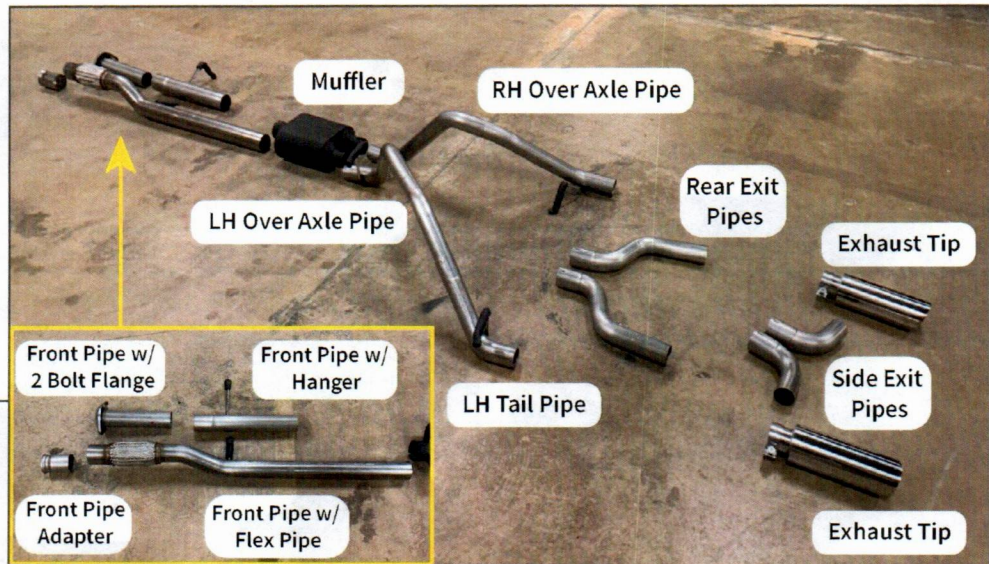
STEP 1

Loosen (1) exhaust clamp at the catalytic converter. Loosen enough to release tension from the ball flange.



STEP 2

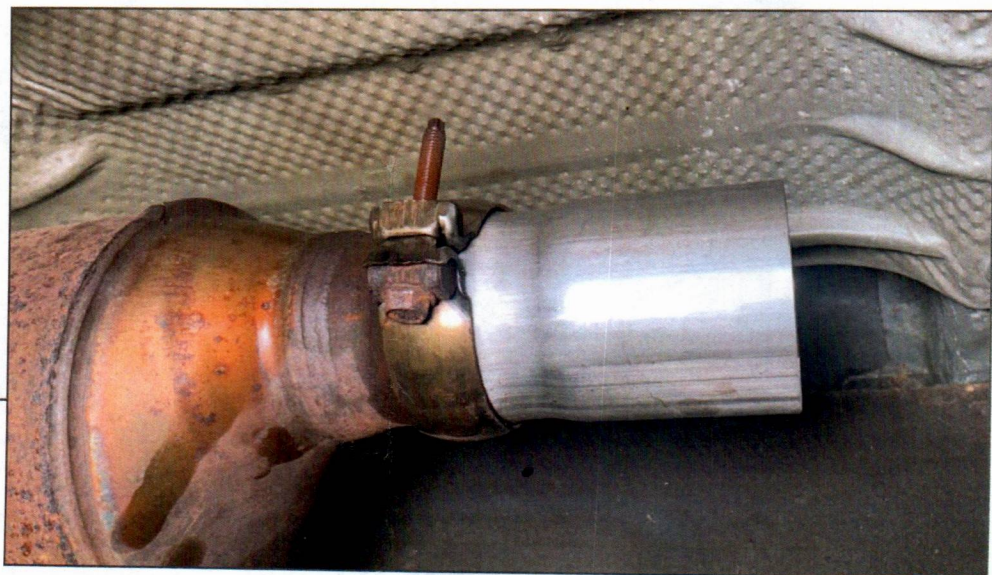
Remove the exhaust assembly from the (3) exhaust hangers. With the exhaust assembly removed from the hangers, remove the exhaust from the vehicle.



STEP 3

Lay out and identify all exhaust components.

Note: Some components are application specific.



STEP 4

07-08 Models: Install the (1) front pipe w/ 2 bolt flange to the catalytic converter reusing original hardware.

09-13 Models: Install (1) front pipe adapter to the catalytic converter using (1) ball flange clamp. Do not fully tighten at this time.



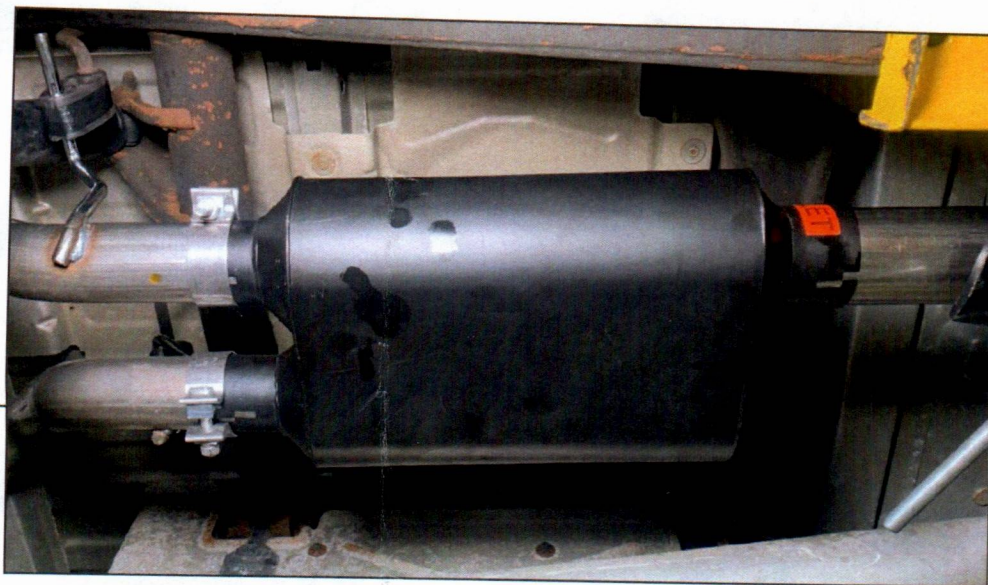
STEP 5



07-08 Models: Install the (1) front pipe w/ flex pipe into the vehicle, then install (1) exhaust clamp w/ hanger onto the front pipe and insert into the vehicle rubber hanger along the frame. *The front pipe welded hanger will not be used.

09-13 Models: Install the (1) front pipe w/ flex pipe into the vehicle, loosely securing to the front pipe adapter using (1) 3" exhaust clamp. Insert the front pipe into the vehicle rubber hanger along the frame.

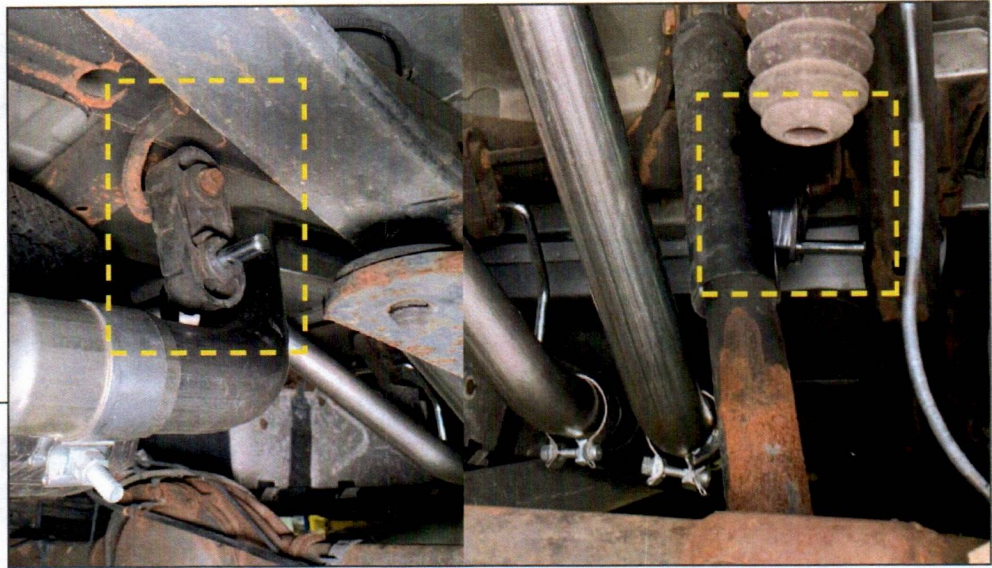
8' Bed Models: Install (1) front pipe w/ hanger prior to installing the front pipe w/ flex pipe.



STEP 6

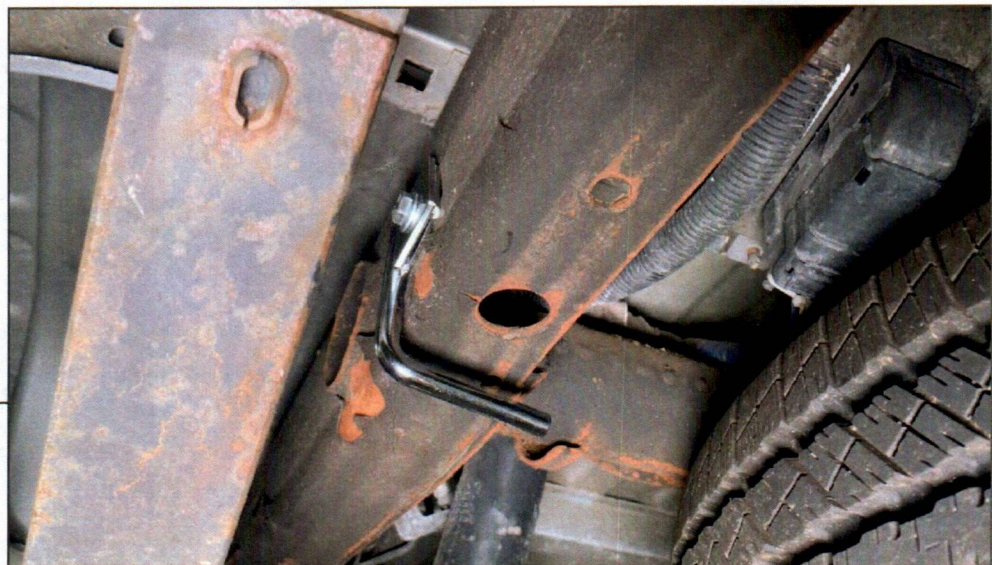
Install the muffler to the end of the front pipe using (1) 3" exhaust clamp. Do not tighten the clamp fully at this time.

Note: Ensure the inlet offset is closest to the RH vehicle frame.



STEP 7

Install the (1) RH over axle pipe into the original vehicle rubber exhaust hangers. Insert the pipe into the muffler and loosely secure using (1) 2.5" exhaust clamp.

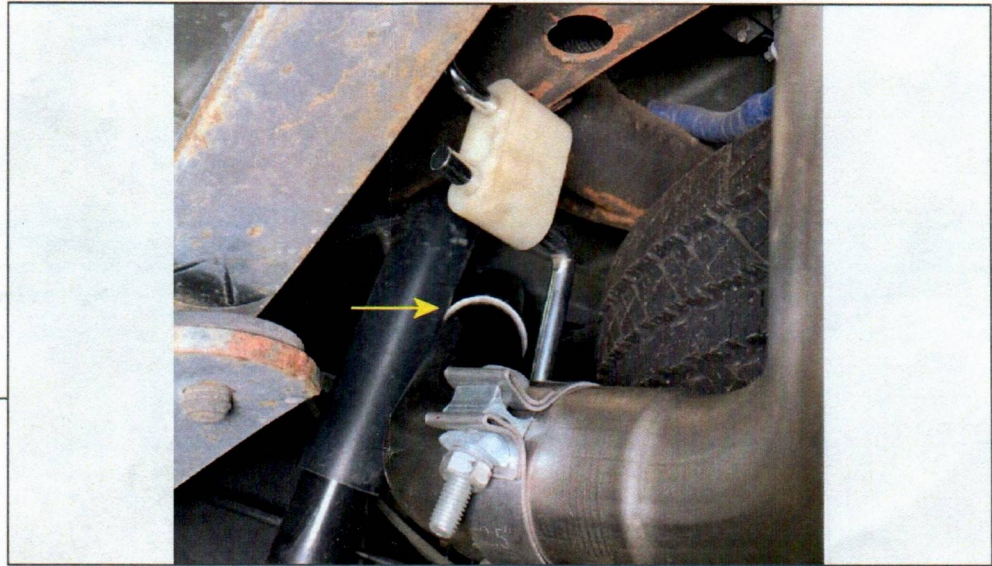


STEP 8

Using (1) 'L' hanger, (1) M8 x 30mm bolt, (1) M8 flat washer, (1) M8 lock washer, (1) M8 nut, and (1) square washers, secure the exhaust hanger to the vehicle frame at the designated location. Tighten until secure.



STEP 9



Install (1) plastic exhaust hanger onto the 'L' bracket. Install the (1) LH tail pipe into the previously installed over axle pipe. Install the tail pipe into the exhaust hanger previously bolted to the frame. Loosely secure the pipes using (1) 2.5" exhaust clamp.

STEP 10



Install the (2) exit pipes using (2) 2.5" exhaust clamps. Install the exhaust tips using the welded on exhaust clamps. Adjust the exhaust appropriately to achieve the desired fitment. Tighten all exhaust clamps to 45 ft-lbs. Use (1) zip tie to secure the axle breather tube from the exhaust pipes.

Installation is now complete.