



DUAL EXHAUST SYSTEM WITH POLISHED TIPS; SIDE/REAR EXIT

(2014-2018 SILVERADO / SIERRA 1500 5.3L)

INSTALLATION INSTRUCTIONS

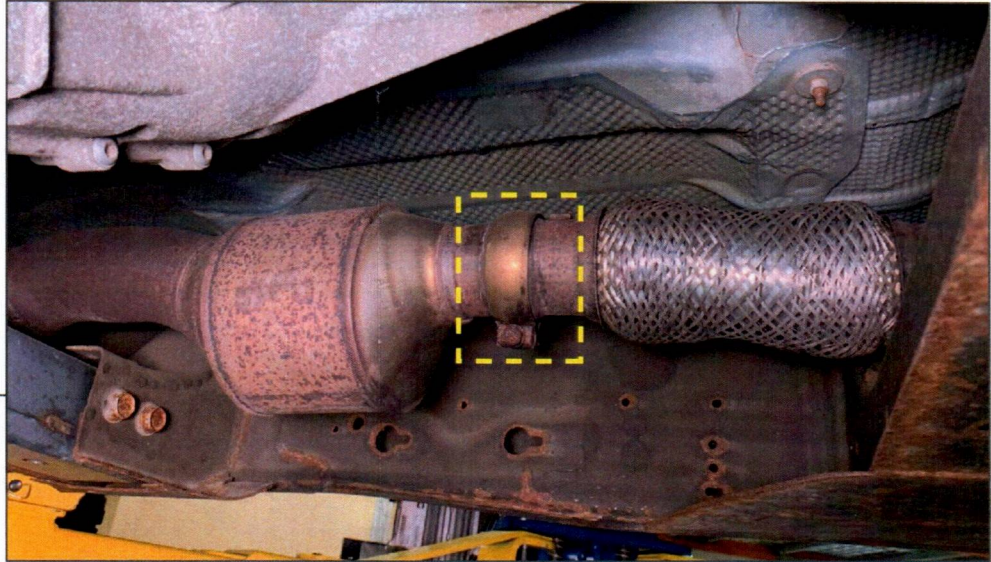
CONTENTS

- | | |
|---------------------------|----------------------------|
| (1) Front Pipe | (2) 3" Exhaust Clamps |
| (1) Front Pipe Extension | (5) 2.5" Exhaust Clamps |
| (1) Muffler | (1) Exhaust Hanger Bracket |
| (1) LH Pipe (to Muffler) | (1) Rubber Hanger |
| (1) LH Pipe (with Hanger) | (5) Large Star Washers |
| (1) RH Pipe | (2) Small Star Washers |
| (2) Side Exit Pipes | (1) M10x1.50 x 40mm Bolt |
| (2) Rear Exit Pipes | (1) M10 Lock Washer |
| (2) Exhaust Tips | (1) M10 Flat Washer |
| (1) Front Exhaust Clamp | (1) M10 Nut |

TOOLS REQUIRED

- 13, 16mm Sockets / Wrenches
- Socket Wrench
- Large Flat Blade Screwdriver
- Cut Off Tool
- Jack & Jack Stands

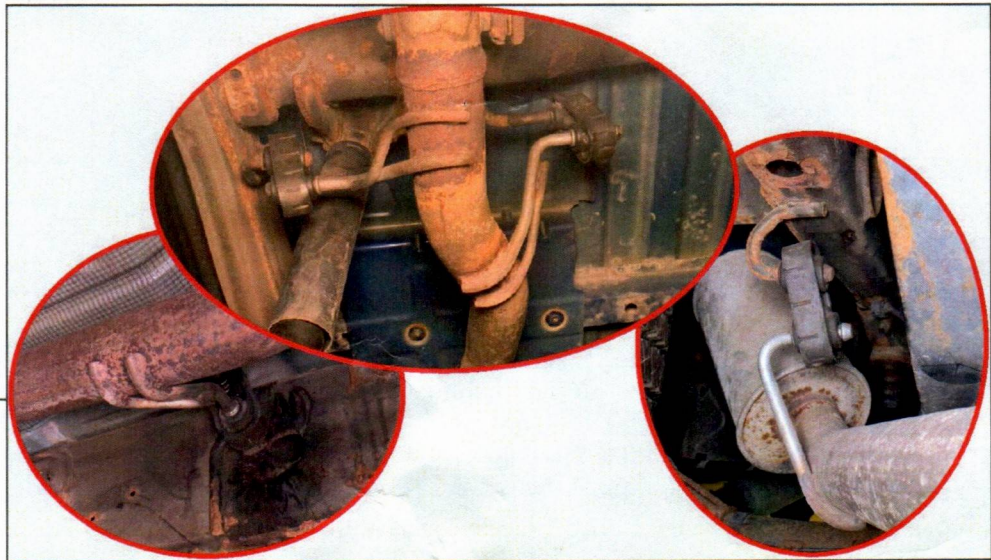
SKU # S212931 / S212932



STEP 1

Lift and support the vehicle to gain access to the factory exhaust system. Locate the (1) exhaust clamp after the catalytic converter. Use a 13mm socket to loosen the exhaust clamp.

Note: Exhaust clamp will not be reused.



STEP 2

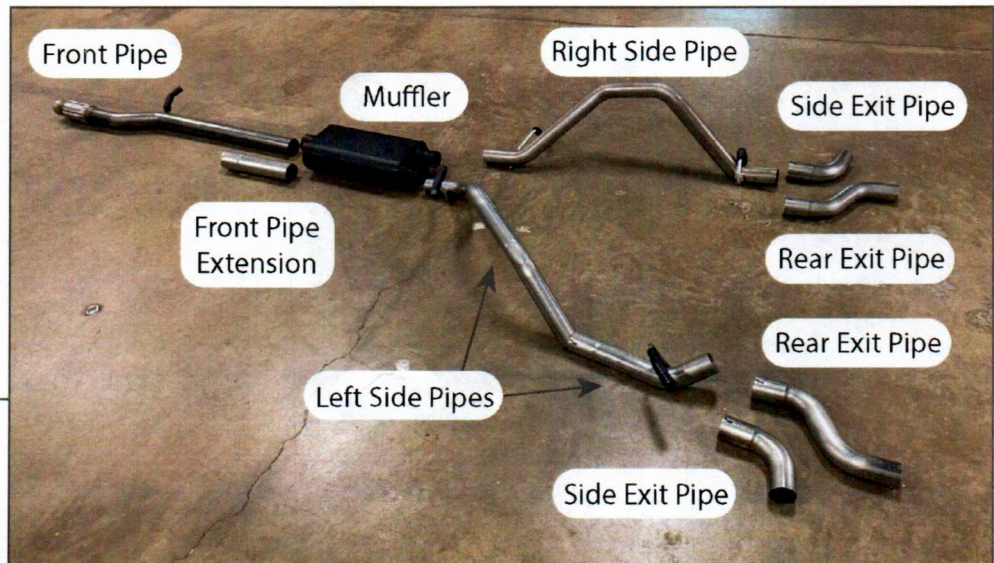
Remove the various rubber exhaust hangers from the metal exhaust pipe hangers. Remove the original exhaust system from the vehicle.

Note: Spray lubricant may be necessary to remove stuck rubber hangers. Quantity and location of hangers may vary with cab/bed size.



STEP 3

Install the supplied exhaust hanger bracket to the vehicle frame using the provided (1) M10x1.50 x 40mm bolt, flat washer, lock washer, and hex nut. Torque to 25 ft.-lbs.



STEP 4

Identify the different exhaust components.



STEP 5

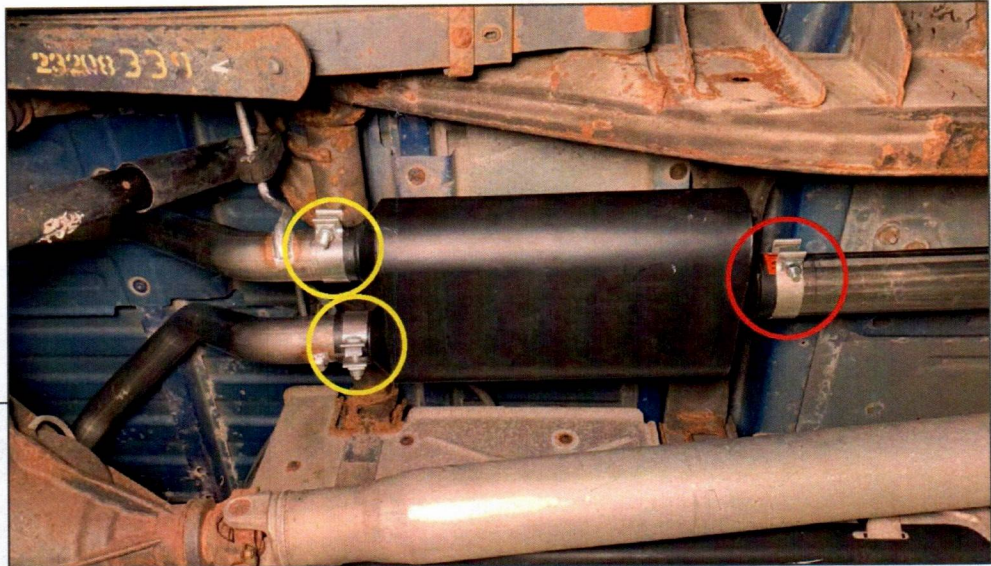


Depending on vehicle cab/bed configuration, trimming the front/mid pipe may be necessary.

STEP 6



Loosely install the front pipe using provided (1) front pipe exhaust clamp. Secure the front pipe to the original rubber exhaust hanger on the frame.



STEP 7

Install the right and left side pipes into the original vehicle rubber exhaust hangers. Align the muffler in between the front and side pipes. Loosely secure the muffler using (2) 2.5" exhaust clamps, and (1) 3" exhaust clamps.



STEP 8

Using (1) 2.5" exhaust clamp, loosely secure the left side pipe (with welded hanger) to the left side pipe (attached to muffler). Attach the pipe to the exhaust hanger bracket bolted to the frame using the provided (1) rubber exhaust hanger. Press the included star washers onto the hangers to keep the pipe centered and secured.



STEP 9

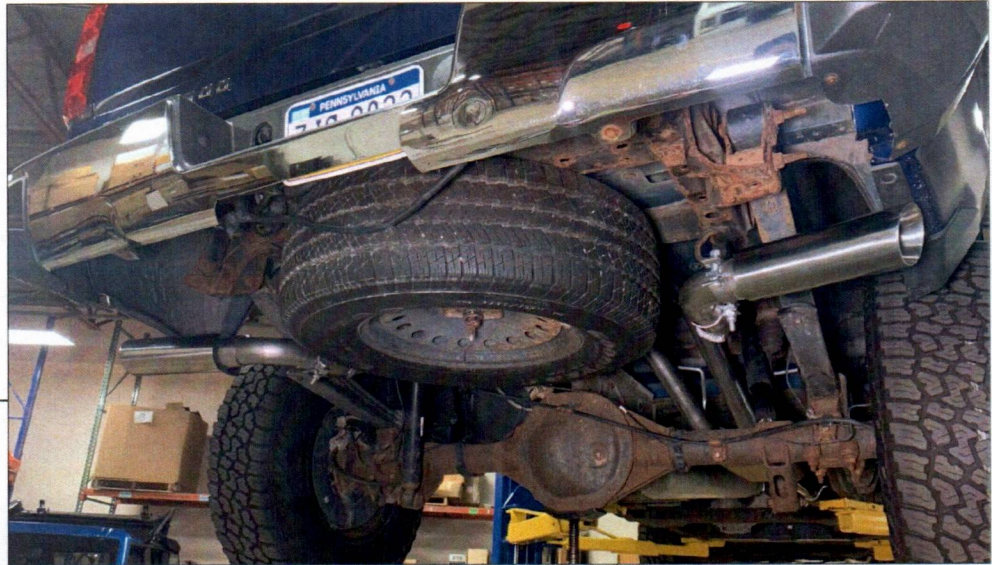


Hang the right side exhaust pipe to the original rubber exhaust hanger.

STEP 10



Loosely install the exit pipes using (1) 2.5" exhaust clamp per side. Install each exhaust tip onto each exit pipe loosely to make alignment adjustments.



STEP 11

With the exhaust loosely installed, finalize adjustments and tighten all of the exhaust clamps. Work from the front of the vehicle to the exhaust tips. Rotate the muffler/pipes as need for best fit. Tighten the exhaust clamps to 45 ft.-lbs.

Installation is now complete.