



Installation Instructions

Part No. 1432

Product: Running Boards

Application: Chevy Silverado Crew Cab 2019-Present

GMC Sierra Crew Cab 2019-Present

Level of Difficulty: 1 2 3 4 5

Professional Installation Time: 90 Min.

DIY Installation Time: 180 Min

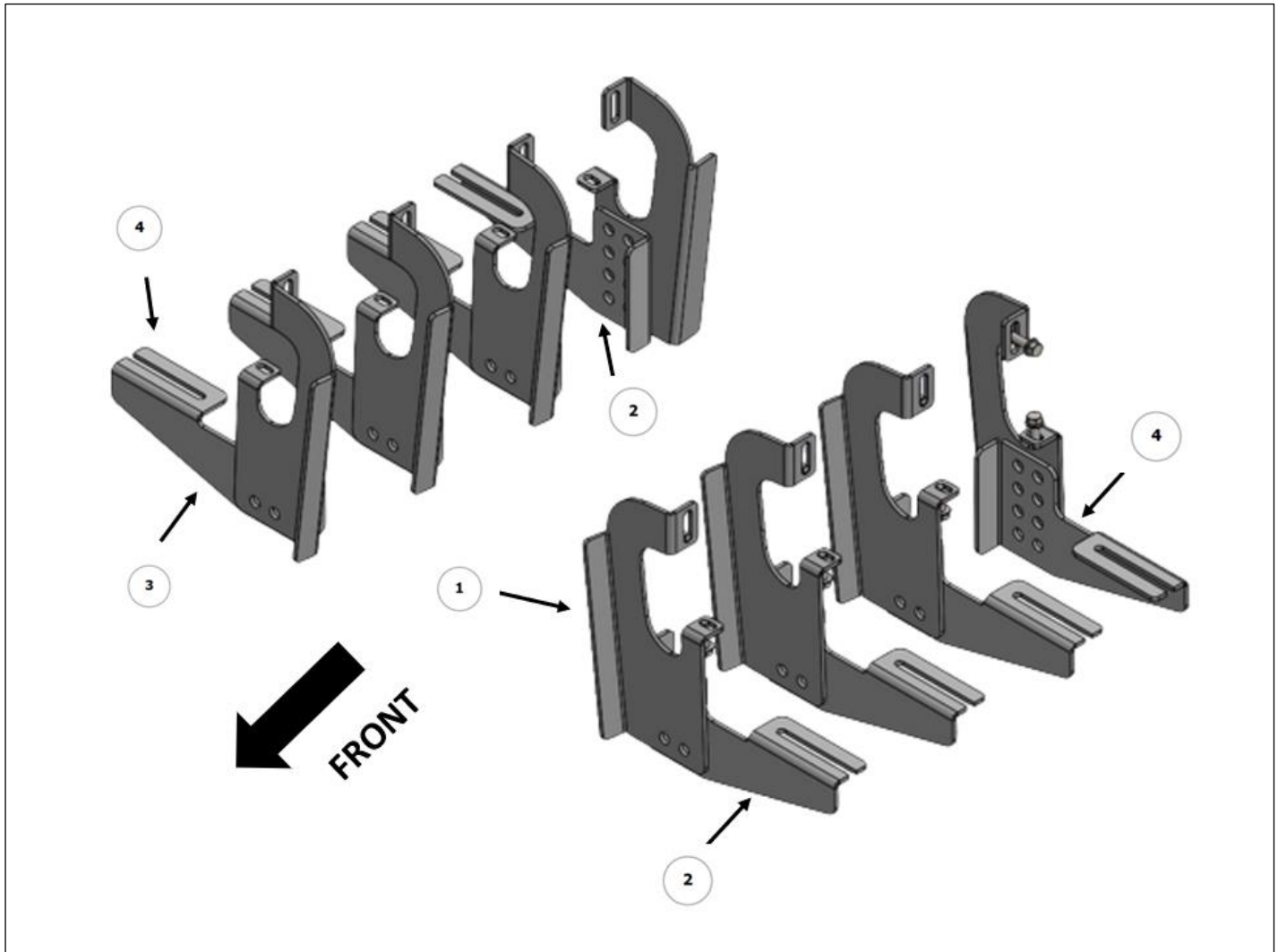
REV 4 09/01/25

Hardware	Torque Aluminum	Torque Steel to Steel
M6 Bolt	3 ft-lbs.	14 ft-lbs.
M8 Bolt	7 ft-lbs.	35 ft-lbs.
M10 Bolt	16 ft-lbs.	64 ft-lbs.
M12 Bolt	28 ft-lbs.	112 ft-lbs.

ATTENTION: Use correct torque settings to avoid damaging the running boards and or mounting brackets. Failure to do so will void your warranty. If you have any questions, please contact our technical team at 1-866-717-6645

Attention: Please make sure that you have the latest instructions from Romik.com

QR Scan



1432 "DRP"

1



DRIVER SIDE
FRONT-1_CENTER-1_REAR-1 BRACKET
4 x QTY

2



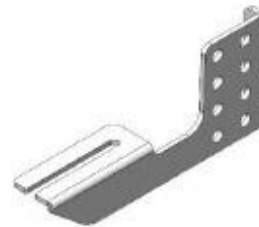
DRIVER SIDE
FRONT-2_CENTER-2_REAR-2 BRACKET
4 x QTY

3



PASSENGER SIDE
FRONT-1_CENTER-1_REAR-1 BRACKET
4 x QTY

4



PASSENGER SIDE
FRONT-2_CENTER-2_REAR-2 BRACKET
4 x QTY

HARDWARE

5



M10x25 FLANGE BOLT
16x

6



M8x25 FLANGE BOLT
16x

7



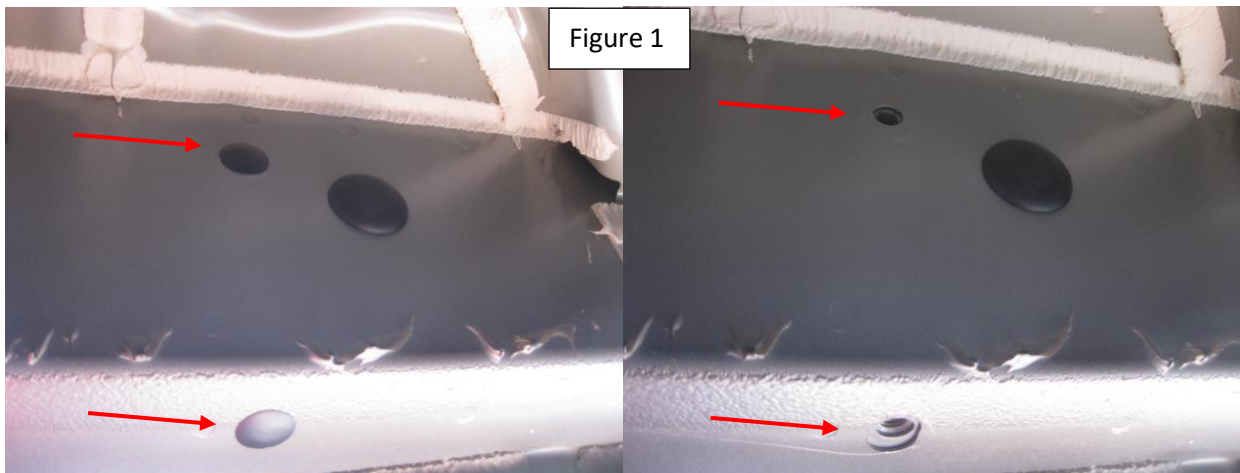
M10 FLANGE NUT
16x

Installation Instructions 1432 “DRP” Bracket Kit

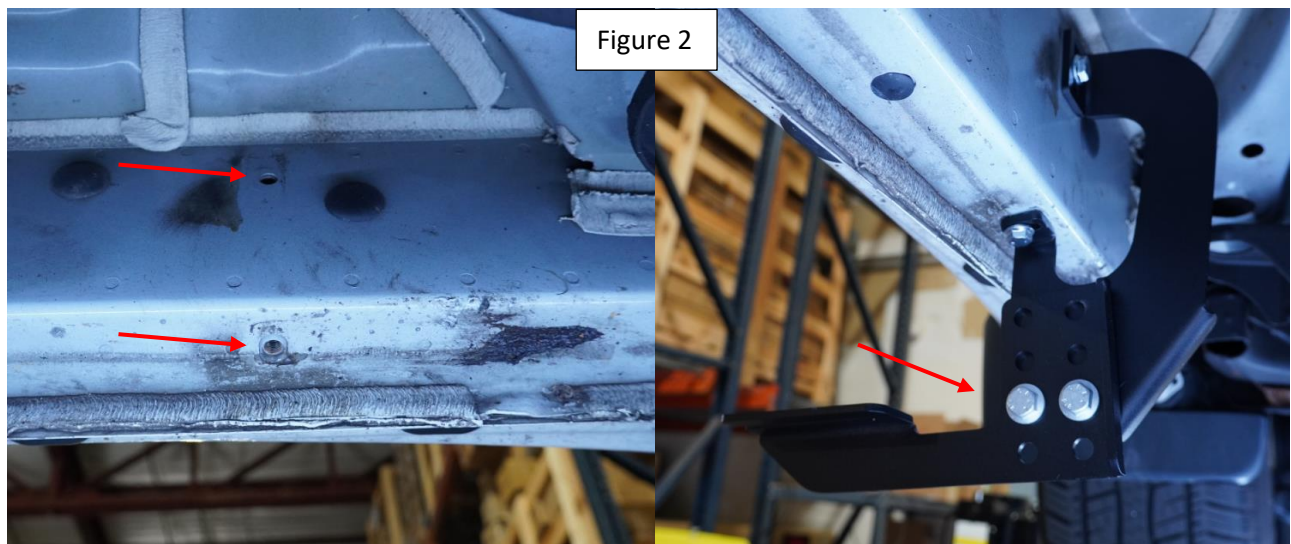
Thank you for choosing the Romik DRP System. This system allows you to adjust the brackets from 0 to 3-inch drop. If you ordered the **optional** DRP cover you can customize them to match the desired height by cutting on the lines inside the cover. Please test before cutting, in many cases you will be able to tuck the cover behind the body of the vehicle without cutting. NOTE: **Blue Loctite is recommended on all metal parts**



Step 1: Locate all 4 mounting points, Remove factory rubber plugs and dispose. Figure 1.

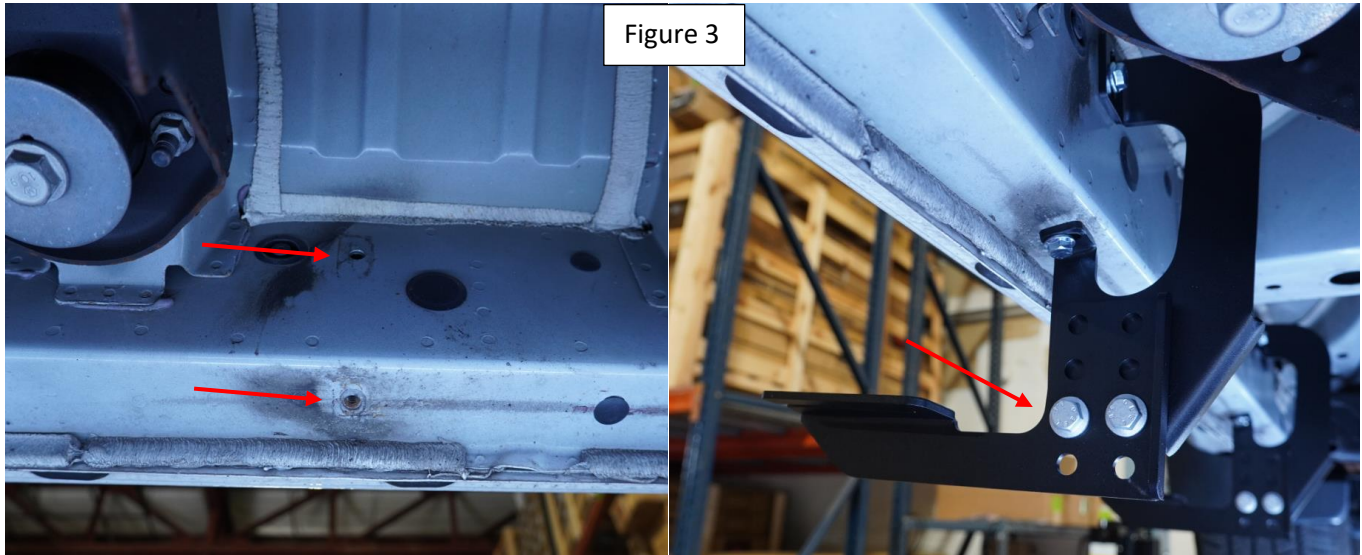


Step 2 Front Bracket: Assemble “DRP” Brackets to desired height. Install using supplied M8 and M10 hardware. Figure 2. Do not tighten

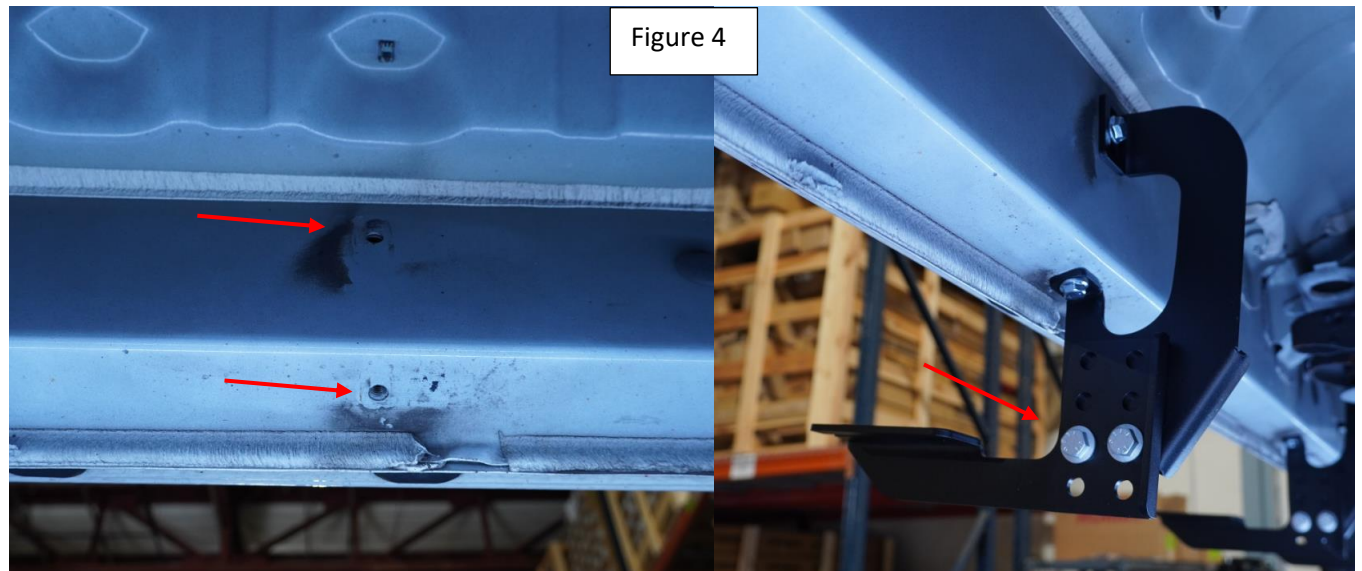


Installation Instructions 1432 “DRP” Bracket Kit

Step 3 Front Middle Bracket: Assemble “DRP” Brackets to desired height. Install using supplied M8 and M10 hardware Figure 3. Do not tighten

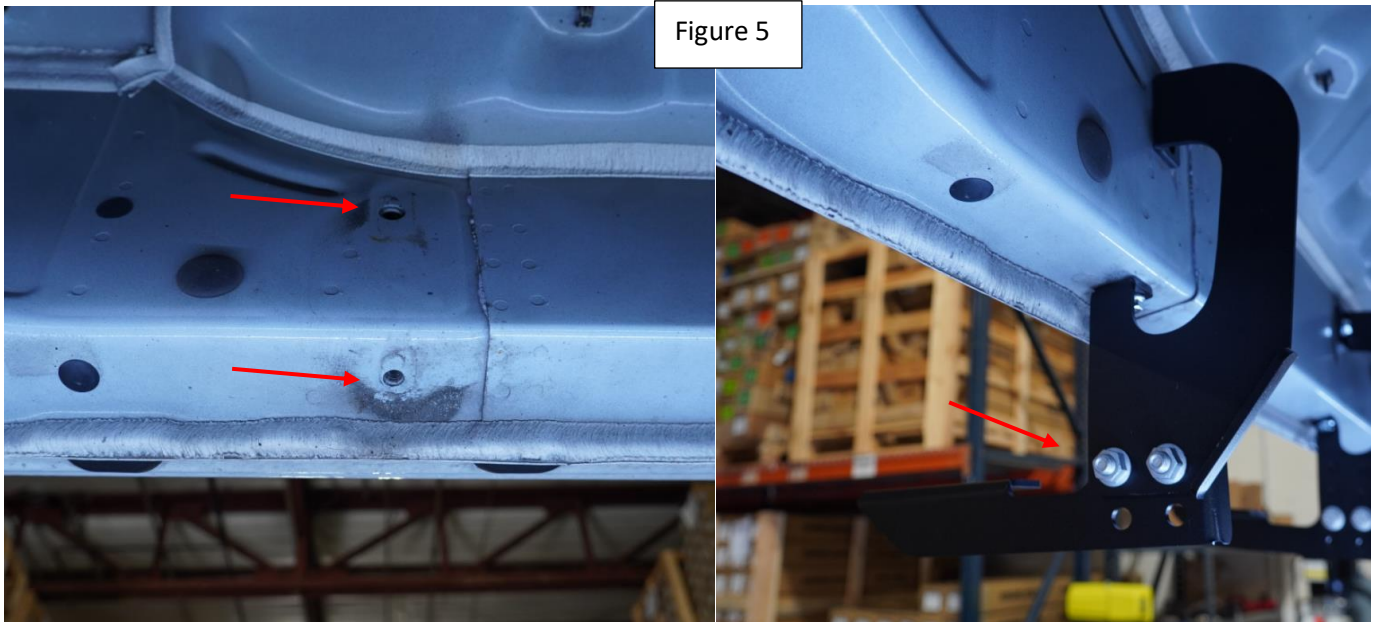


Step 4 Rear Middle Bracket: Assemble “DRP” Brackets to desired height. Install using supplied M8 and M10 hardware Figure 4. Do not tighten



Installation Instructions 1432 “DRP” Bracket Kit

Step 5 Rear Bracket: Assemble “DRP” Brackets to desired height. Install using supplied M8 and M10 hardware Figure 5. Do not tighten



Step 6 OPTIONAL: Install DRP covers on brackets. Torque M8 bolts to 35 ft-lbs. Torque M10 bolts to 64 ft-lbs proceed to last page of this manual for running board install instructions and torque values. Use of a level is recommended.



NOTE: DRP system is designed to assist you getting in and out of the vehicle. However the lower you place the brackets the lower the weight rating. For maximum weight capacity use DRP brackets at zero.

If installing ROB / ROF / RPD / RPT-R running boards make sure “clamping” plates are properly installed on running boards.

For Technical support please call our team at 1-866-717-6645 and one of our experts will assist you with this installation.

Thank you for choosing Romik.

Installation Instructions Running Boards

NOTE: Use of power tools will damage the bottom of the running board and void your warranty.

RAL/RB2/REC/RZR Running boards

Step 1: loosen the M8 hardware on back of the running boards.

Step 2: Slide running board onto brackets

Step 3: Tighten hardware to 7 ft lbs.

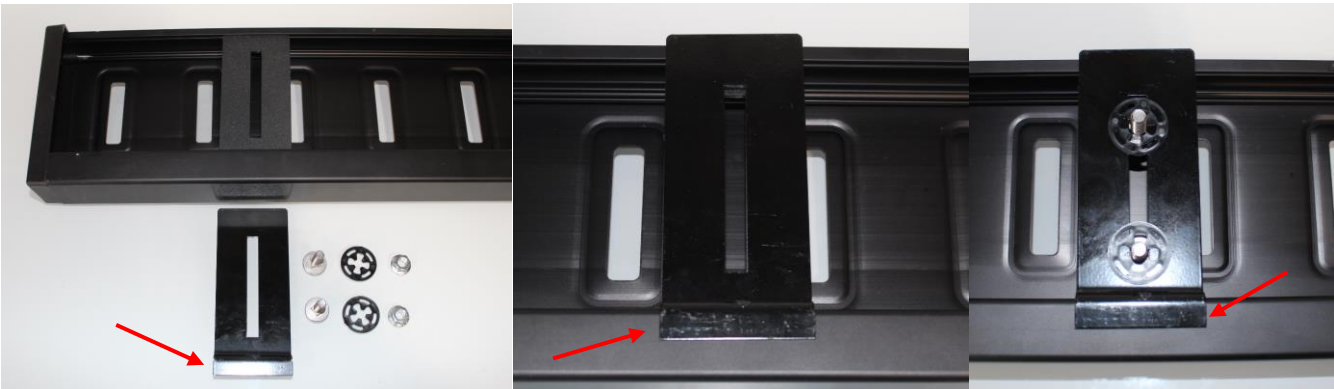


ROF/RPD/ROB Running boards

Step 1: Place clamping plate on top of running board as shown below. Make sure clamping plate sits correctly on running board surface.

Step 2: Install carriage bolts and plastic retaining clips as shown below.

Step 3: Install and tighten hardware to 7 ft lbs.



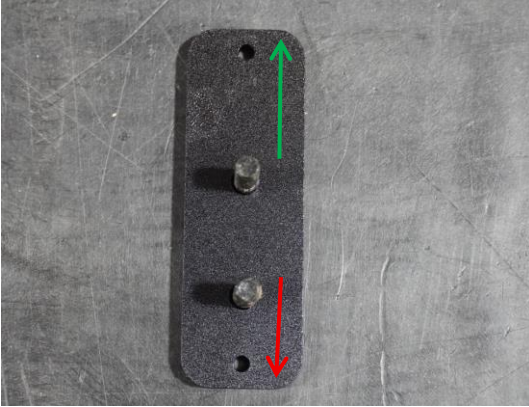
RPT-R Running boards

Step 1: Place the RPT-R running board on top of the mounting brackets. If you are using the optional DRP covers, make sure they are installed first.

Step 2: Slide the RPT-R clamp plates from inside the running board to its location. Wide section out green arrow / Narrow section towards the vehicle red arrow

Step 3: Repeat procedure on all mounting brackets

Step 4: Install and tighten hardware to 7 ft lbs.



Product Registration and Warranty Information



- Register your Romik products at <https://romik.com/productregistration>
- Warranty information at <http://www.romik.com/warranty>

Cleaning and maintaining your Romik Running boards

Cleaning and maintaining your running boards is important, apply a light coat of a quality carnauba wax at least 2X per year. Wash often with mild soap and make sure to remove all soap residue. Many car automatic carwashes use a strong soap, make sure to use enough water to remove all residue.

For video instructions on how to clean your Romik products please click here <https://romik.com/cleaning>