



RUST BUSTER

RB7395L & RB7395R

Center Cab Mount

2014-2018 Chevy/GMC Silverado & Sierra 1500



REQUIRED TOOLS

Jack Stands or Lift
Mig Welder
Paint/Primer
Hand Grinder
Cutting Wheel or Torch
Welding Gloves
Welding Hood/Shield
Ear & Eye Protection
Fire Extinguisher
C-Clamp

KIT CONTAINS

Center Cab Mount

QTY

1

RB7395L & RB7395R



RUST BUSTER

RB7395L & RB7395R
Center Cab Mount
2014-2018 Chevy/GMC Silverado & Sierra 1500

1) **PREPARING YOUR VEHICLE**

Begin by disconnecting your battery prior to starting your installation.

Inspect your vehicle for leaking fuel lines, fuel tank and engine components. If you have fuel leaks repair all leaks prior to starting your installation. If your fuel tank is near your welding area **remove your tank prior to welding.**

Remove all combustible items above the work area such as seats, carpets, padding, etc.

Keep all flammable materials away from the vehicle work area.

2) **PREPARING YOUR WORKSTATION**

Keep a fire extinguisher close by in the case of fire and make sure you always have a designated "Fire Watch" to assist during the cutting or welding phases.

Abide by all apprenticed welding safety standards and practices.

Always use appropriate welding eye protection, ear protection, and work and fire safety gloves during the installation and within the work area.



WARNING!

If you are unsure on how to perform the installation or how to operate any of the required tools listed above, it is **HIGHLY** advised that you enlist the work of a certified welder/installer.

Failure to follow proper safety precautions and instructions may result in serious injury. **The user assumes all liability when installing the product.**



RUST BUSTER

RB7395L & RB7395R

Center Cab Mount

2014-2018 Chevy/GMC Silverado & Sierra 1500

3) PREPARING FOR YOUR INSTALL

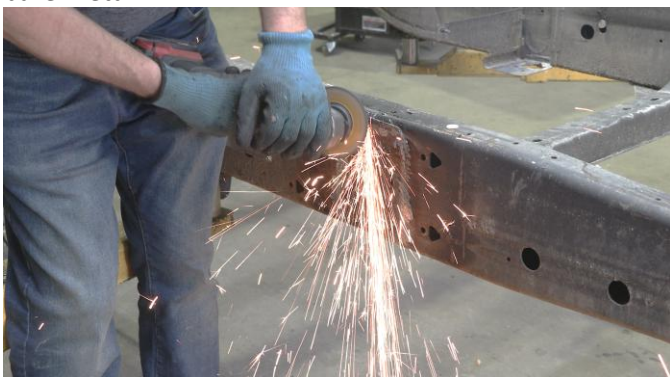
Uninstall the factory cab mount bolt and bushing.

4) CUT

Begin by removing the factory center cab mount.



Grind the work area free of rust and debris, revealing bare metal.



Spray the work area with a weld-through primer to prevent future rust formation.



5) WELD

Hold the mount up to the frame and reinstall your factory bushing and bolt to obtain proper alignment and mark off the location. Confirm the mount's alignment, and uninstall the bolt and bushing before fully welding into place.



Remove any potential fire hazards from the work area. Following proper welding procedures, tack weld the part onto the frame before welding it on fully. Weld 100% around all edges.





RUST BUSTER

RB7395L & RB7395R

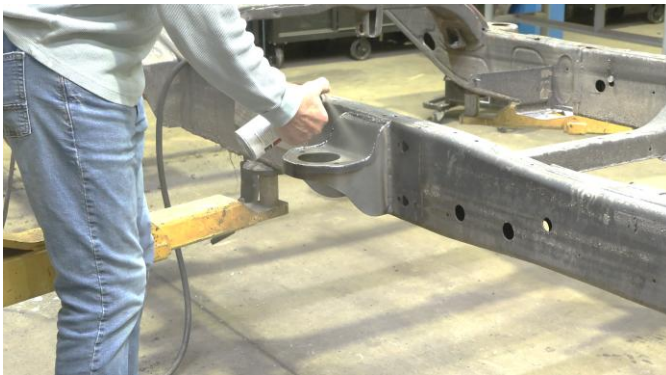
Center Cab Mount

2014-2018 Chevy/GMC Silverado & Sierra 1500

6) PAINT AND PROTECT

Reinstall your body mount bolt and bushing.

Coat the part and work area with a primer or other rust inhibitor to help prevent or reduce the risk of rust formation.



We recommend our Rust Buster Rust Converter & Primer Spray Paint (RB9917).