



BRIGHT IS ONLY THE BEGINNING

INSTALL GUIDE

X3B LED THIRD BRAKE LIGHT: GM SILVERADO/SIERRA (07-13)

X3B50

WHAT'S INCLUDED



1X 3RD BRAKE LIGHT ASSEMBLY

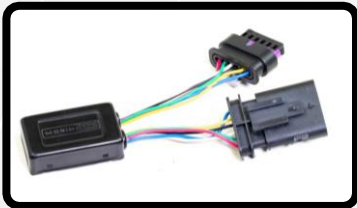


1X ADAPTER HARNESS



1X SPARE FOAM GASKET

OPTIONAL ADD-ONS



1X RAPID-FLASH MODULE (SKU X3B01)



REQUIRED TOOLS

- PHILLIPS HEAD OR T20 TORX DRIVER (VARIES BY VEHICLE)
- YOUR PREFERRED DETAIL SPRAY OR PAINT CLEANER

WARNING: IT IS THE INSTALLERS RESPONSIBILITY TO CONFIRM COMPLIANCE WITH STATE AND LOCAL LAWS. BY READING THIS DOCUMENT, YOU AGREE IT IS ONLY TO BE USED AS AN EDUCATIONAL GUIDE. MORIMOTO LIGHTING NOR ITS DEALERS MAKE GUARANTEES ON ANY FINISHED RESULTS, NOR ARE THEY TO BE HELD RESPONSIBLE FOR ANY DAMAGE, MISUSE, OR PERSONAL INJURIES. IF YOU ARE UNABLE TO CLEARLY UNDERSTAND AND ADAPT THE INFORMATION BELOW, PROFESSIONAL INSTALLATION IS RECOMMENDED.



FACTORY LIGHT REMOVAL

THIS DOCUMENT IS MEANT TO SERVE AS A GENERAL GUIDE FOR VEHICLE DISASSEMBLY AND PRODUCT INSTALLATION. WHILE WE TRY TO COVER THE PROCESS AS THOROUGHLY AS POSSIBLE, YOUR EXPERIENCE MAY DIFFER SLIGHTLY DUE TO DIFFERENCES BETWEEN YEARS, TRIM PACKAGES, OPTIONS, OR AFTERMARKET PARTS INSTALLED.

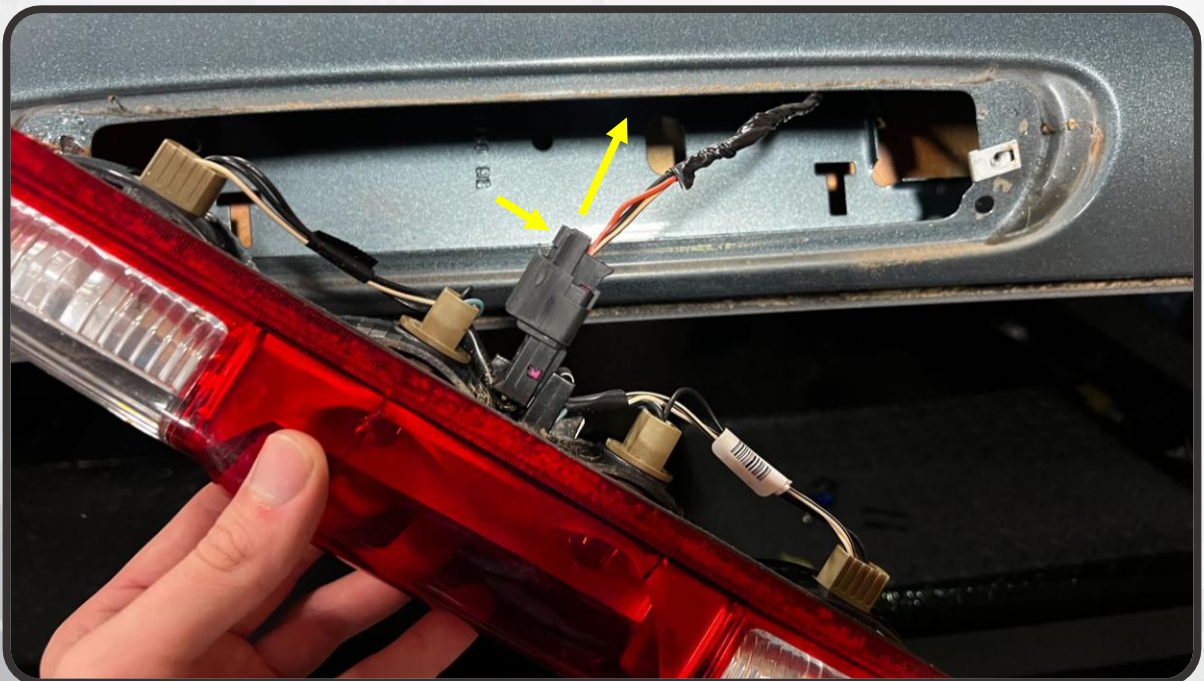
VEHICLE USED IN THIS GUIDE:

2009 CHEVROLET SILVERADO 1500 2WD LT

1. REMOVE THE TWO SCREWS (MAY BE PHILLIPS OR T20 TORX. VARIES BY VEHICLE) SECURING THE FACTORY 3RD BRAKE LIGHT TO THE VEHICLE

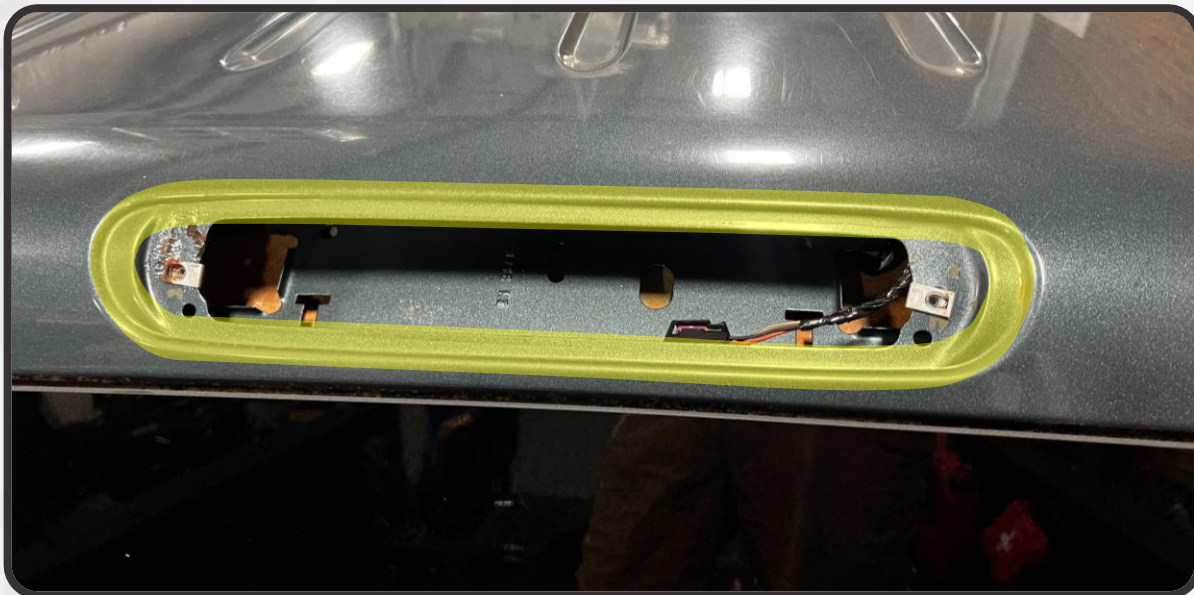


2. PULL THE BRAKE LIGHT ASSEMBLY AWAY FROM THE VEHICLE
3. DEPRESS THE TAB ON THE BRAKE LIGHT CONNECTOR AND PULL AWAY FROM THE ASSEMBLY TO DISCONNECT THE PLUG

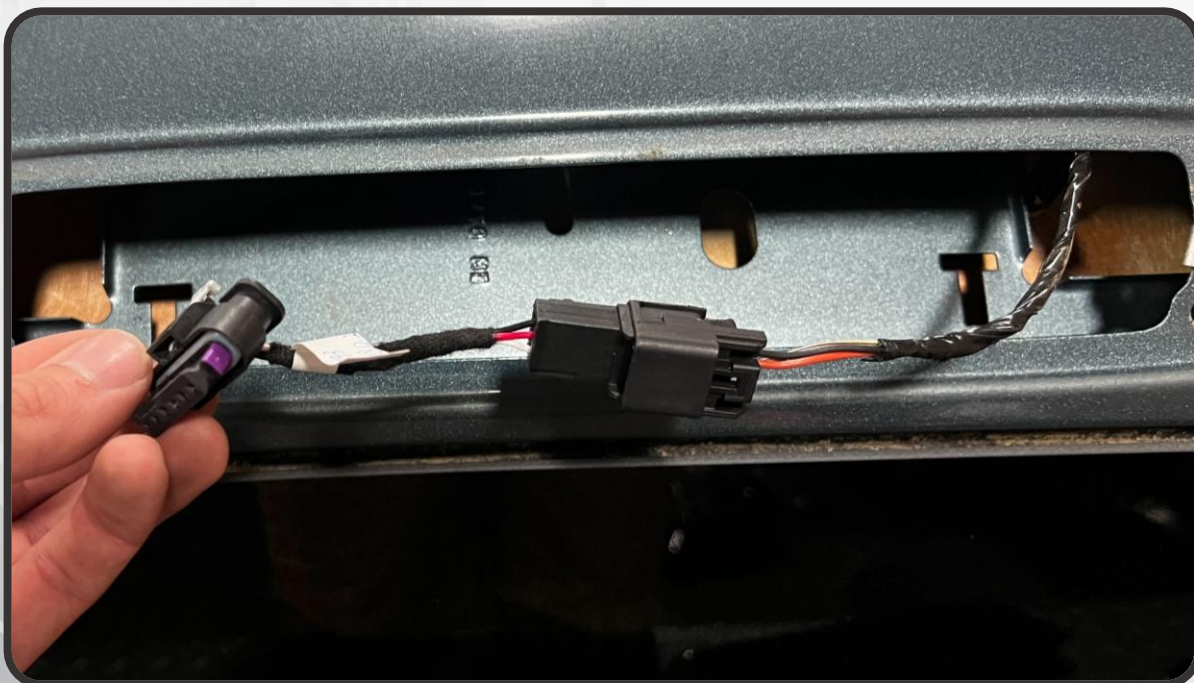


X3B INSTALLATION

4. WITH THE 3RD BRAKE LIGHT ASSEMBLY REMOVED FROM THE VEHICLE, TAKE THIS TIME TO THOROUGHLY CLEAN THE HIGHLIGHTED AREA UNDERNEATH THE ASSEMBLY WITH YOUR PREFERRED RESIDUE-FREE CLEANER. MAKE SURE THE AREA AROUND THE HOUSING IS FREE OF DIRT/DEBRIS SO THAT THE NEW ASSEMBLY CAN PROPERLY SEAL AGAINST THE VEHICLE



5. CONNECT THE INCLUDED ADAPTER HARNESS TO THE VEHICLE'S FACTORY 3RD BRAKE LIGHT CONNECTOR



RAPID FLASH MODULE INSTALLATION

IF YOU WILL BE INSTALLING THE MORIMOTO X3B RAPID-FLASH MODULE (SOLD SEPARATELY), FOLLOW STEPS 6 AND 7 BELOW. IF YOU ARE NOT INSTALLING THE RAPID-FLASH MODULE, SKIP AHEAD TO PAGE 5 (STEP 8)

6. CONNECT THE RAPID-FLASH MODULE TO THE ADAPTER HARNESS



7. FIND A SUITABLE LOCATION IN THE BRAKE LIGHT CAVITY TO MOUNT THE RAPID-FLASH MODULE, WHERE IT IS NOT IN THE WAY OF THE BRAKE LIGHT HOUSING, BUT IS CLOSE ENOUGH FOR THE MODULE TO PLUG INTO THE BACK OF THE 3RD BRAKE LIGHT. MAKE SURE THIS AREA HAS BEEN THOROUGHLY CLEANED. REMOVE THE BACKING ON THE ADHESIVE ON THE BACK OF THE MODULE AND SECURE IT TO THE SHEET METAL IN THE CAVITY



X3B INSTALLATION

8. LIFT THE NEW BRAKE LIGHT ASSEMBLY UP TO THE VEHICLE AND CONNECT THE ADAPTER HARNESS (OR RAPID-FLASH MODULE IF INSTALLED) TO THE CONNECTOR ON THE BACK OF THE HOUSING



9. FIT THE NEW BRAKE LIGHT ASSEMBLY INTO THE LIGHT CAVITY. LOOSELY INSTALL THE FACTORY HARDWARE AND GET IN THE VEHICLE AND CONFIRM THAT BOTH FUNCTIONS ARE WORKING PROPERLY



BRAKE LIGHT



CARGO LIGHT

10. REMOVE THE LIGHT FROM THE VEHICLE AND REMOVE THE PAPER BACKING FROM THE ADHESIVE ON THE FOAM GASKET. PRESS THE LIGHT INTO POSITION AND SECURE IT TO THE VEHICLE USING THE TWO FACTORY SCREWS. TIGHTEN UNTIL HAND TIGHT. DO NOT USE POWER TOOLS, DO NOT OVERTIGHTEN, NO UGGA DUGGAS

