

INSTALLATION MANUAL



Thank you for your order.

Video for how to install:

<https://u.pcloud.link/publink/show?code=XZtann0Zafas5HMOkPj81RChJ5qD2YTL7dP7>



Scan the QR code to get a video on how to connect cables

How to connect the Bluetooth of Android head unit with the factory system

<https://u.pcloud.link/publink/show?code=XZ0Pfn0ZU80WuwB2IJKW5QPHCw3Axy7SdLvk>



Scan the QR code to get a video on how to connect via Bluetooth.

If you need tech support for other head units, please feel free to contact us:

Email:

support@aucarauto.com
eric.z@amph-industry.cn

WhatsApp/Phone:

+86 15811876790
+86 15116009580
+86 18312297316

Important Note:

To improve the efficiency of troubleshooting, please provide the following if you have any problems during installation/usage:

1. Your order number with us
2. your original car dashboard picture and car manufacturing year
3. clear wiring pictures and videos to demonstrate the issues you have during your installation, this will be very helpful to our engineers.
4. If any software issues, please go to settings-about system and take a picture of the system info/version for us.

Thank you so much!



The small hole indicated by the green arrow is the **RST (reset)** button, which can be used to forcibly restart the device.



**8 INCH MODEL WITH
AUTO AC**



**7 INCH MODEL WITH
MANUAL AC**



1. Faceplate cover

2. Speaker

3. AUX-CAMERA-MIC harness

4. Power adapter cable

5. Speaker adapter

6. Factory LVDS adapter

7. Power adapter cable



9. Faceplate cover

8. 7 inch model Factory Buttons adapter cable



10. 3.5mm External MIC harness

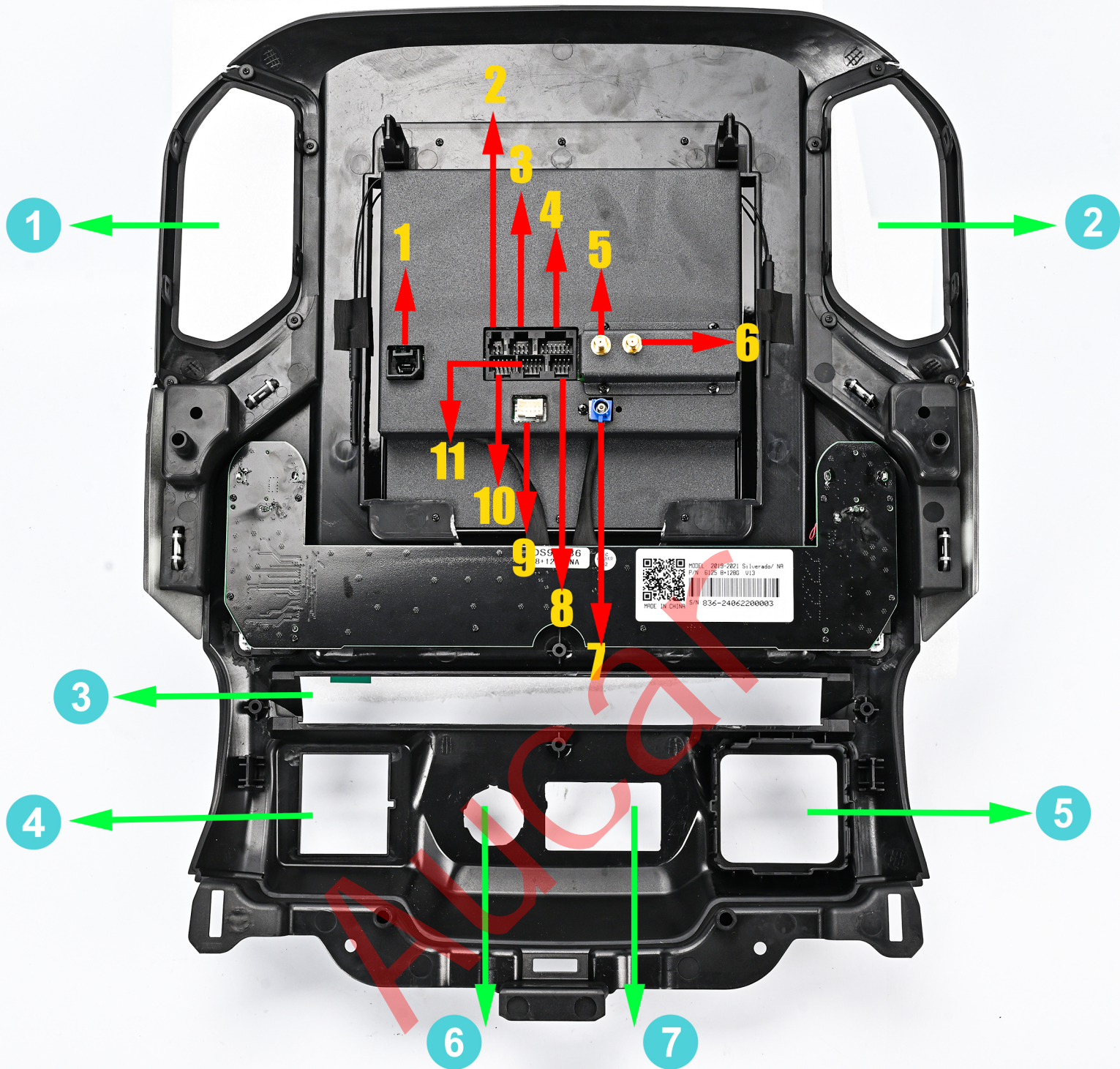
11. GPS ANT

12. 4G ANT

13. 4G ANT

14. 4G SIM card slot

15. USB cable



- 1. Factory LVDS plug socket 2. Speaker adapter socket 3. USB cable socket
- 4. Factory power adapter socket 5.6. 4G signal ANT 7. GPS ANT
- 8. 4G sim card cable socket 9. 7 inch car model factory buttons adapter socket
- 10. useless socket 11. AUX camera harness socket

- 1 2 Factory AC vent installation port. 3 Factory button function installation port.
- 4 5 Factory function installation port 6 Factory cigarette lighter installation port
- 7 Factory USB Type-C installation port.

Aceplate cover: install it on the unit as shown in the position



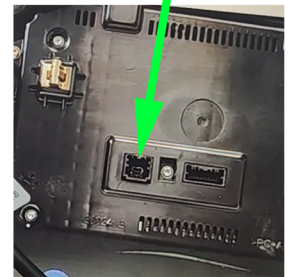
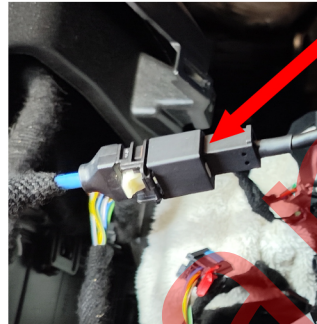
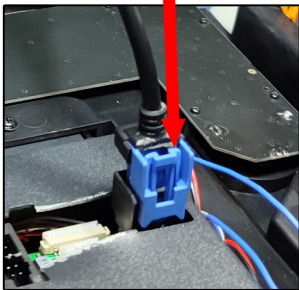
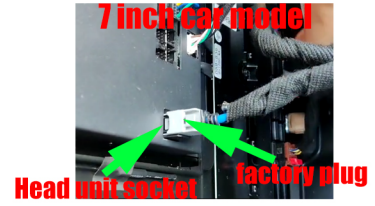
Connect speaker 2 and speaker adapter cable 5 to the unit. The function of this speaker is to play Android navigation prompts and phone sounds while listening to the original car radio



Line 6 is the factory system LVDS adapter cable. One end connects to the original car plug, and the other end connects to the plug on the back of the unit, as shown in the picture.

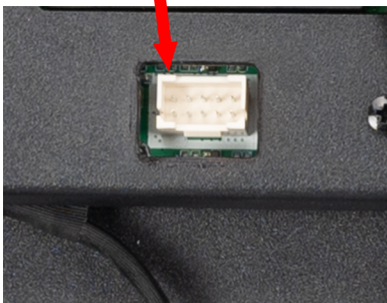
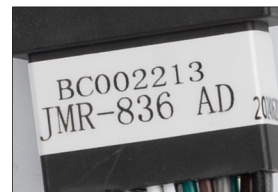
For the 7-inch models, some vehicles require this adapter cable, but others do not need it and can directly use the OEM plug to connect to the back of our unit, as shown in the picture.

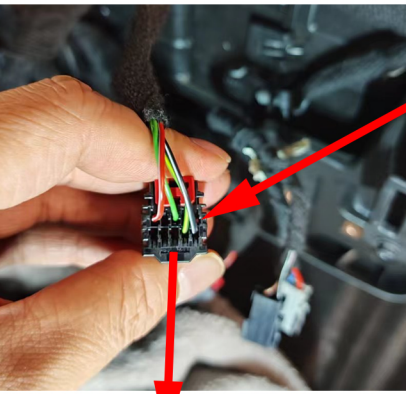
For the 8-inch models, this adapter cable is needed.



If your OEM plug is the same as this one, you must use this adapter cable

Line 8 is the factory button adapter cable. Only models with a 7-inch screen require this adapter cable.





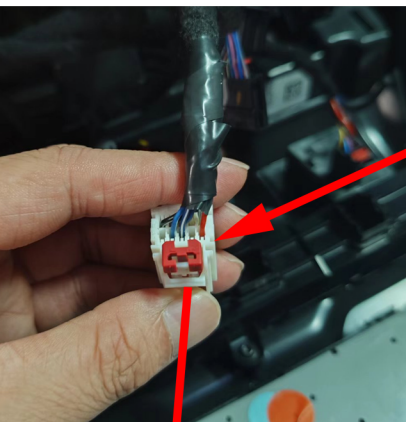
Important reminder:

If your OEM power plug is the black plug shown in the picture, please use **line 4**.

and the connector is labeled with the code **"JMR-836A"**

As shown in the picture, one end of this connector plugs into the back of the unit, and the other end plugs into the OEM connector.

4



Important reminder:

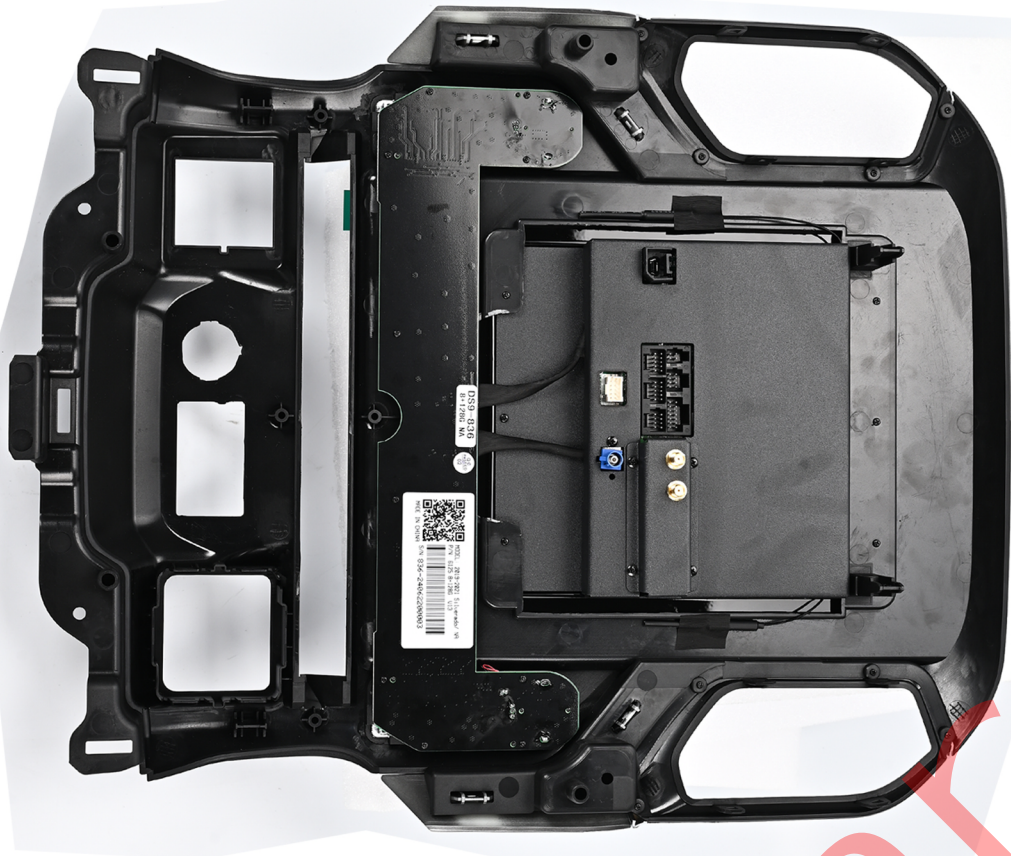
If your OEM power plug is the black plug shown in the picture, please use **line 7**.

and the connector is labeled with the code **"JMR-836B"**

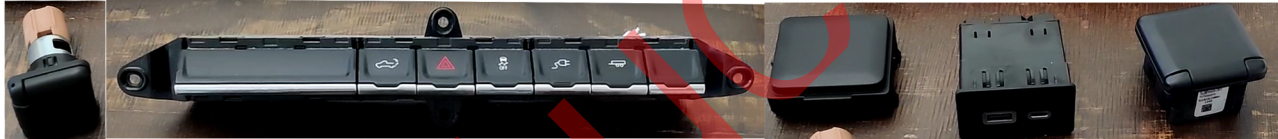
As shown in the picture, one end of this connector plugs into the back of the unit, and the other end plugs into the OEM connector.

7

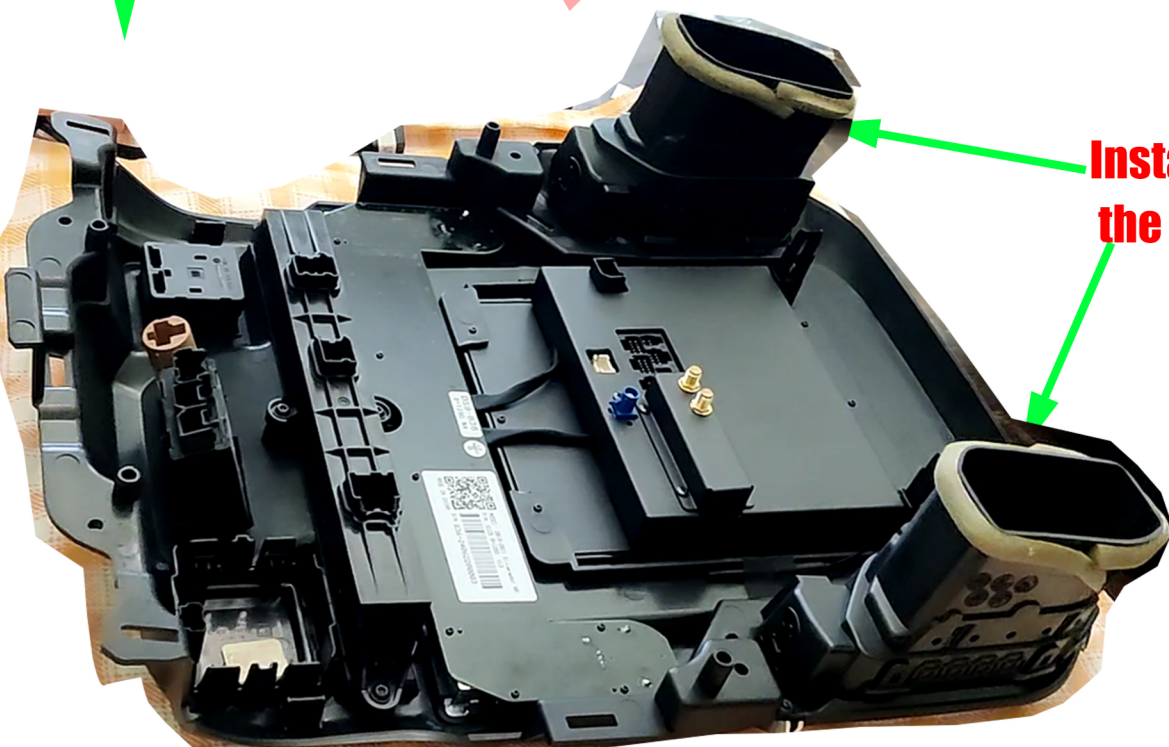




Factory parts

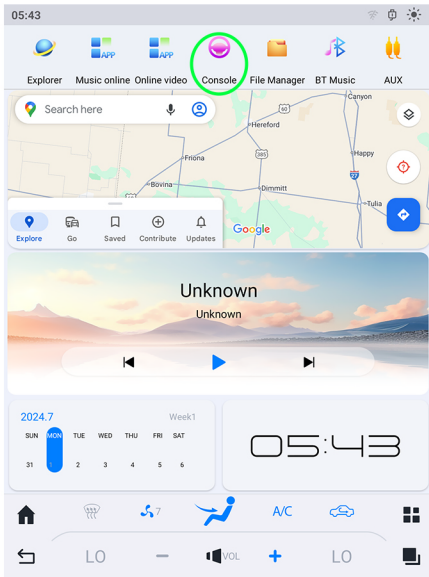


remove the factory part to head unit

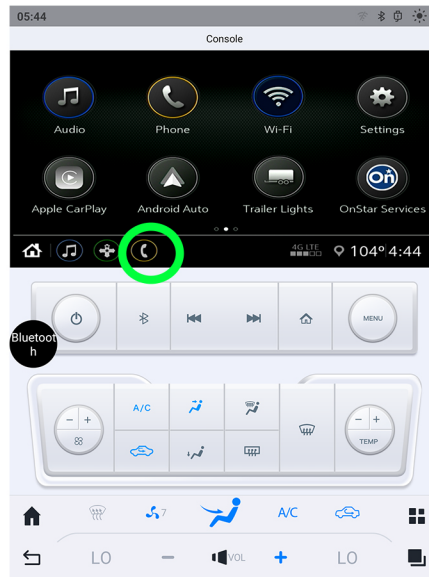


Install the AC vent onto the head unit.

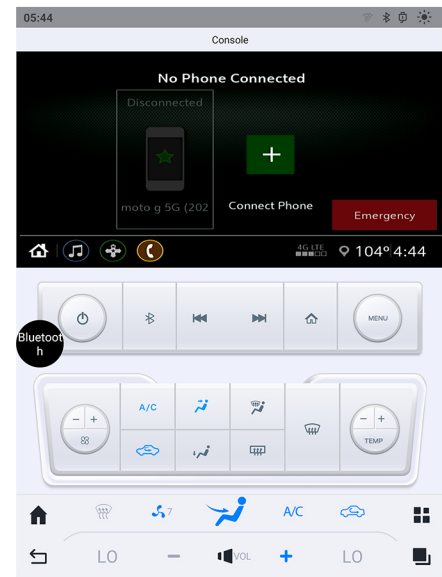
After the unit is connected, we need to connect the unit to the OEM system's Bluetooth to receive sound.



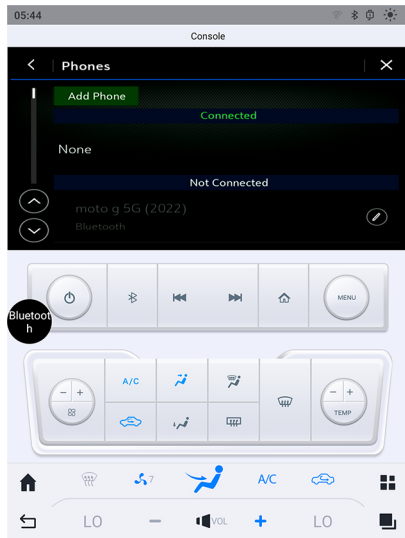
1. Click CONSOLE



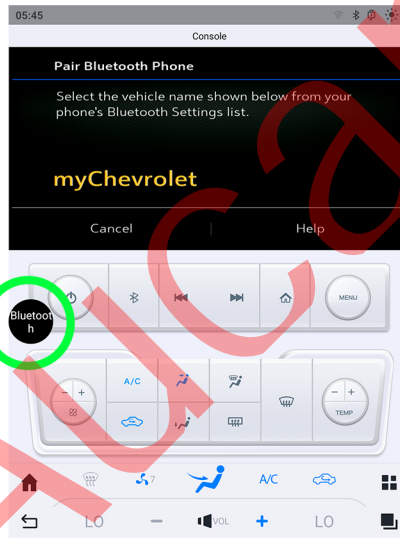
2. Click the Dial button



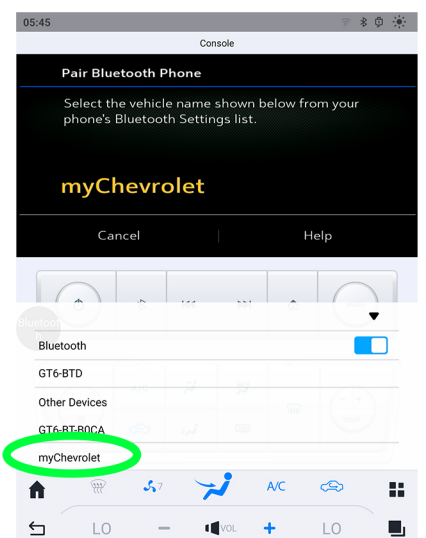
3. Click the '+'



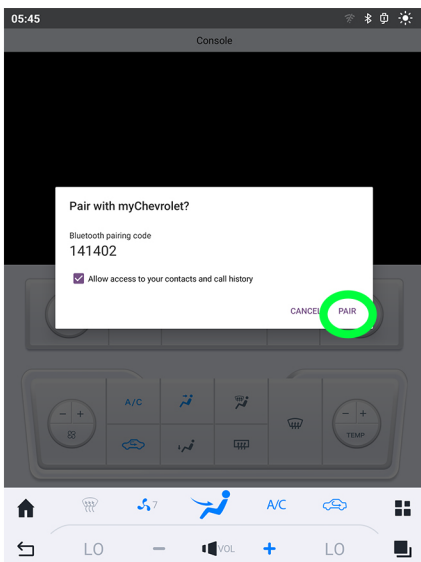
4. Click Add Phone



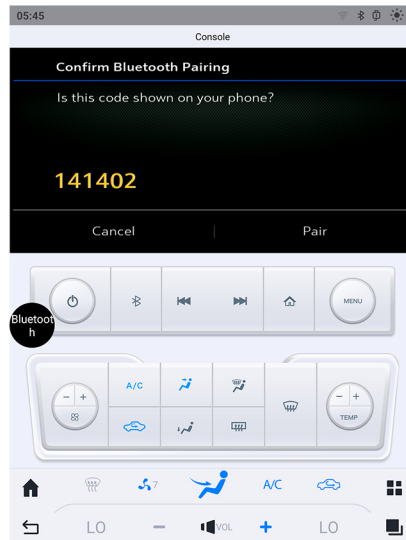
5. Click Bluetooth



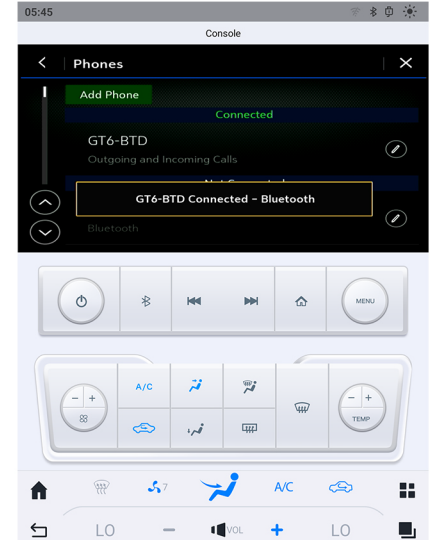
6. Click on the Bluetooth name my Chevrolet or my GMC



7. Click PAIR



8. Pairing



9. Bluetooth connected, Now you can play music from this unit

Frequently Asked Questions?

1. How to get a consistent internet connection to your products?

There are THREE ways of getting a consistent internet connection on our products.

- ①. Any Wi-Fi connection
- ②. Phone hotspot
- ③. Using a SIM Card

2. My CarPlay/Android Auto won't connect

- ①. Make sure you have disconnected your OEM CarPlay/Android Auto.
- ②. Delete all Bluetooth and CarPlay device names related to the unit and your phone from both your phone and the unit, then terminate the car auto application from tasks. After that, reconnect
- ③. If the first step doesn't work, then go to settings > system > factory reset to restore factory settings
- ④. If the first and second steps still cannot solve the problem, it may be that carplay or android auto has been updated, and you need to find a supplier to provide upgraded software.

3. Black screen

- ①. Please look for the word 'RST' on the unit's panel. There is a small hole at this location. Use a pin to press the button inside the hole, and the unit will power off and restart.
Note: Do not confuse it with the MIC hole to avoid damaging the MIC

4. What is the factory settings and Car AC/mode password?

- ①. Factory setting code is 7890, Car AC/mode code is 666888 or 8861
Note, all settings must be changed under the guidance of a technician. Do not make changes on your own. The company will not be responsible for any issues arising from unauthorized changes

5. How can I get the software update?

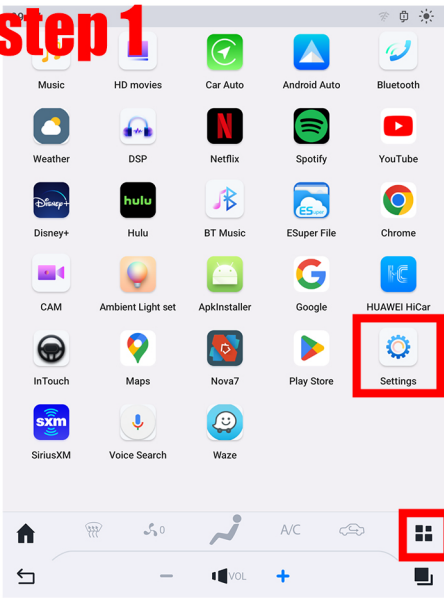
- ①. Follow our Instagram @aucarauto to get the latest software updates, and you can also download the latest firmware upgrades from our website at www.aucarauto.com."

6. After installing the SIM card, the unit cannot detect the SIM card

- ①. After installing the SIM card, you need to go to the settings interface. In the top right corner, there is a download icon for 'save and reboot.' You need to press this icon to save and reboot the unit

How to choose your car model

step 1

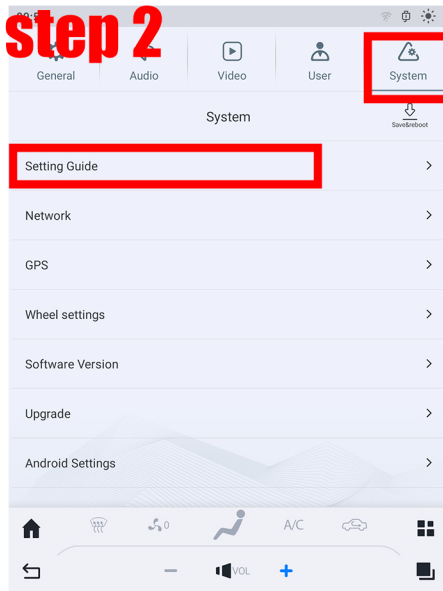


Press **≡** to enter the app list screen.

Find and open Settings

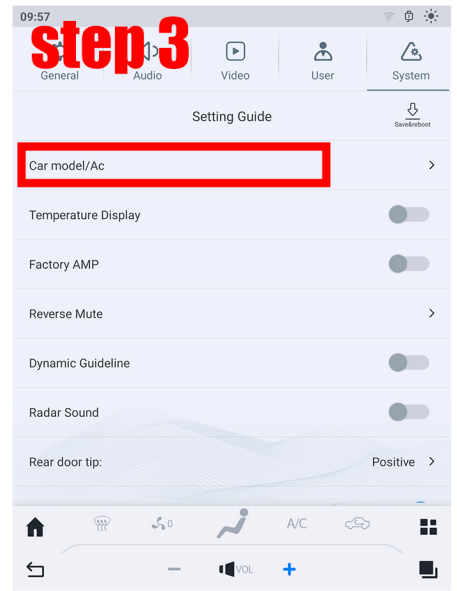


step 2



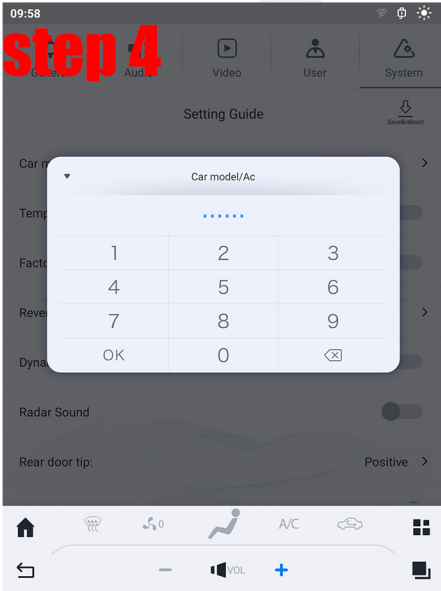
Click on "System". open the settings guide.

step 3



Click on "Car model/AC".

step 4



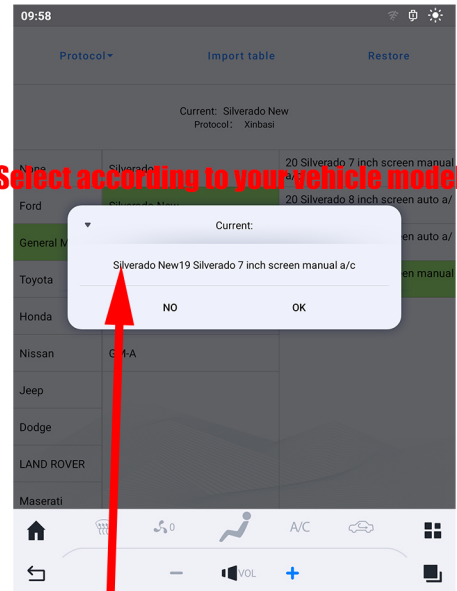
Enter the password **666888**.

step 5



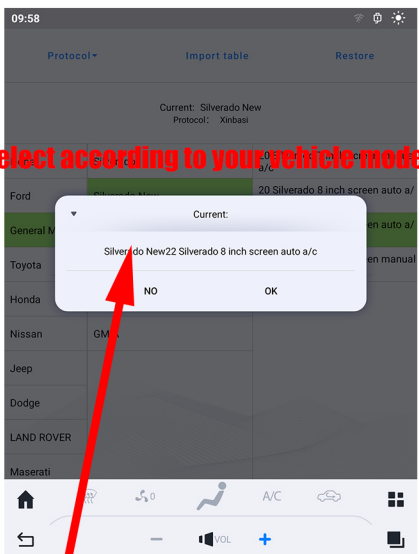
Enter the vehicle model options. The default option is for a **2020 Silverado 8-inch screen AUTO AC**.

Select according to your vehicle model.



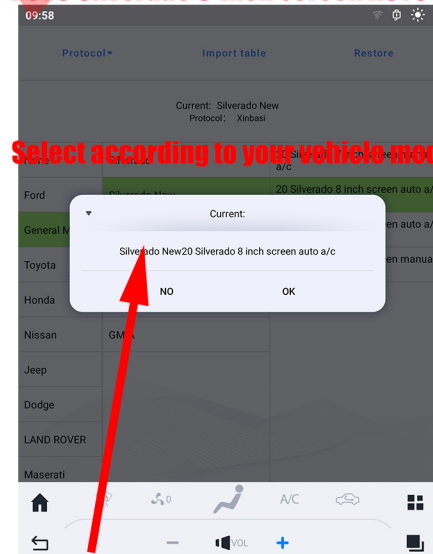
This option is only applicable to the early 2019 models with a 7-inch screen.

Select according to your vehicle model.



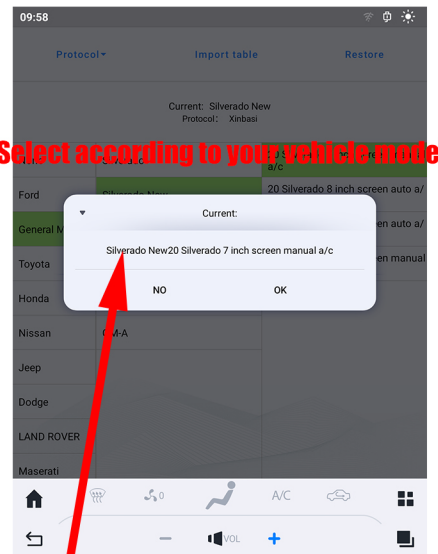
This option is only applicable to 8-inch models from 2022 and later.

Select according to your vehicle model.



This option is only applicable to 8-inch models from 2019-2021

Select according to your vehicle model.



This option is only applicable to the late 2019 and subsequent models with a 7-inch screen.

Because it is difficult to accurately distinguish between model years, the selected option may not work after choosing the corresponding vehicle model. You may need to select another option with the same screen size.

After selecting the car model, you need to turn off the engine and lock the car for 20 minutes, otherwise your OEM system will not have touch functionality.