



PART# 101520C
2015-2020 GM SUV 2WD/4WD
2014-2018 GM 1500 2WD/4WD
2019+ GM 1500 "CLASSIC" 2WD/4WD
ALUM/STAMPED STEEL SUSPENSION

2" FRONT LOWERING SPINDLES



2 HOUR INSTALL TIME

Components	Hardware
(1) 101520D DRIVE SIDE SPINDLE	(2) M16-2.0 JAM NUT
(1) 101520P PASS SIDE SPINDLE	(2) 5/8" INT TOOTH LOCK WASHER
	(2) 3/8" LOOM CLAMP
	(2) M12-1.75 JAM NUT
	(2) M12 INT TOOTH LOCK WASHER

NOTE:

DOES NOT FIT 2014-2016 GM 1500 MODELS EQUIPPED WITH CAST STEEL FRONT SUSPENSION

CUTTING OF THE UPPER BALL JOINT REQUIRED FOR 4WD MODELS

CUTTING OF THE LOWER BALL JOINT AND TIE ROD REQUIRED FOR USE WITH 18" RIMS

CLEARANCING OF THE END OF THE LOWER CONTROL MAY BE NECESSARY IF YOUR TRUCK IS EQUIPPED WITH ALUMINUM CONTROL ARMS

Please double check the parts list before beginning installation to ensure all parts are present. If there is something missing, please contact Maxtrac Suspension (714) 630-0363. Please have the boxes present if parts are missing or damaged

PRIOR TO INSTALLATION:

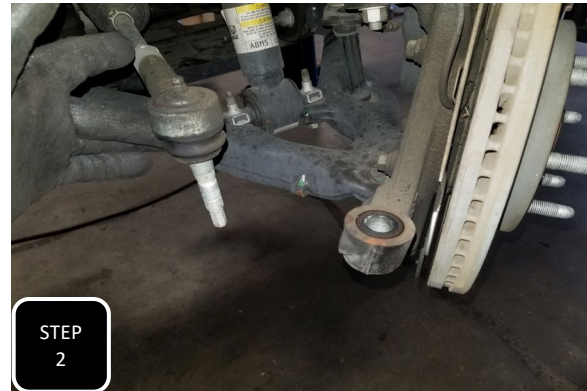
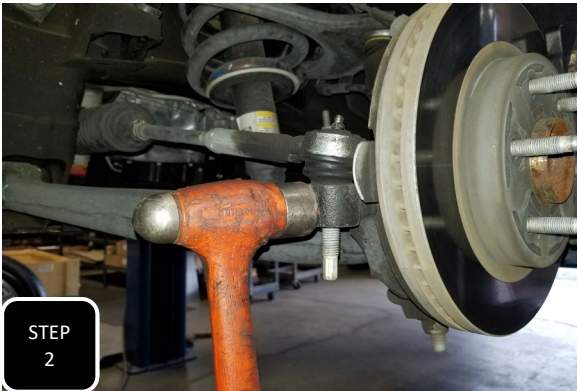
- 1. Factory service manual is recommended to have on hand.**
- 2. Secure and properly block vehicle prior to beginning installation.**
- 3. Always wear safety glasses when using power tools or working under the vehicle**
- 4 Modification to any part will void the warranty associated with that product**

AFTER REMOVING PARTS FROM VEHICLE, SAVE HARDWARE FOR REINSTALLATION

REVISED 10/3/2022



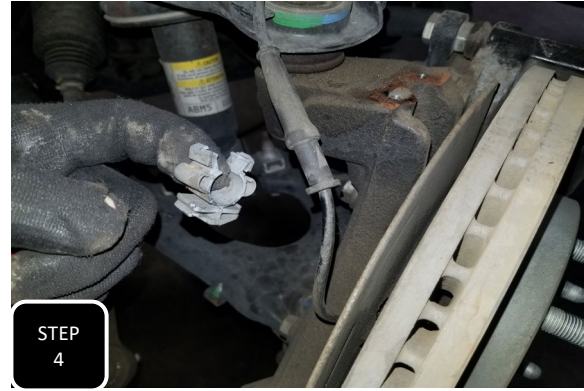
Step 1 Jack up the front of the vehicle and support under the frame with jack stands.



Step 2 Unbolt the tie rod at the spindle and hit the side of the spindle, right at the rod end, with a hammer to break it loose and separate.



Step 3 Unbolt the ABS wire guide from the top of the spindle and pinch the bottom of the grey clip to separate it from the bracket.



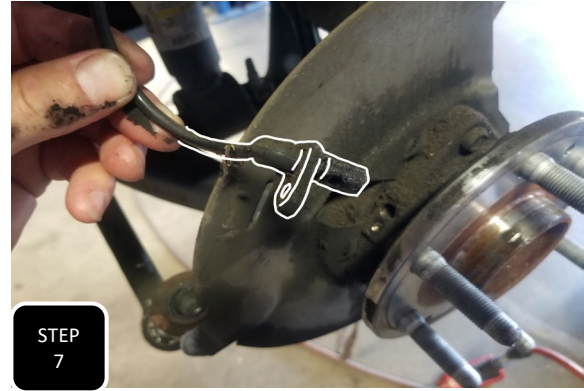
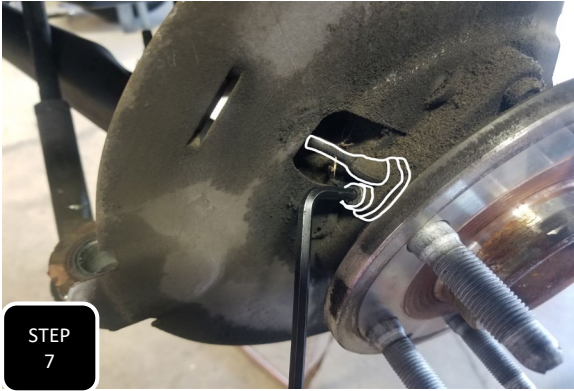
Step 4 Once the bracket is removed, open up the clip and separate from the wire and discard the clip.



Step 5 Unbolt the brake caliper and support out of the way. **NOTE: NEVER ALLOW THE BRAKE CALIPER TO HANG BY THE BRAKE LINE.**



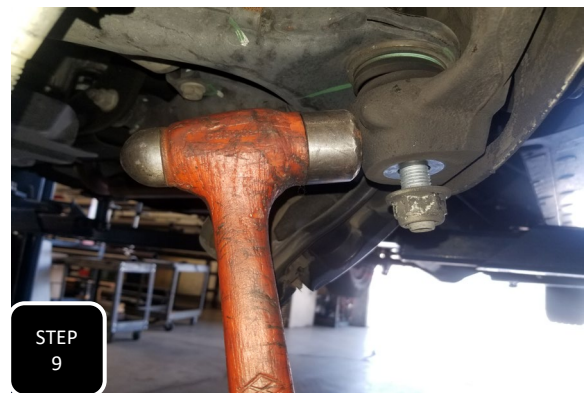
Step 6 Unbolt the rotor retainer bolt and remove the rotor.



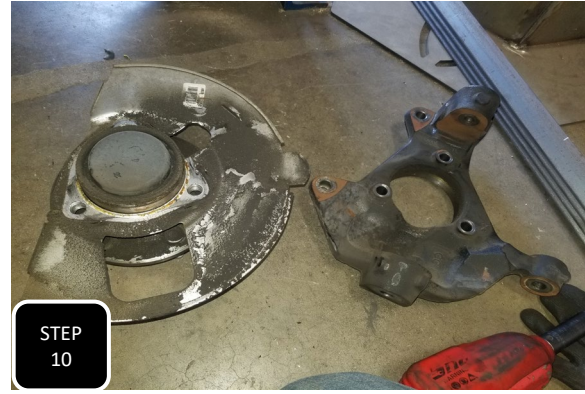
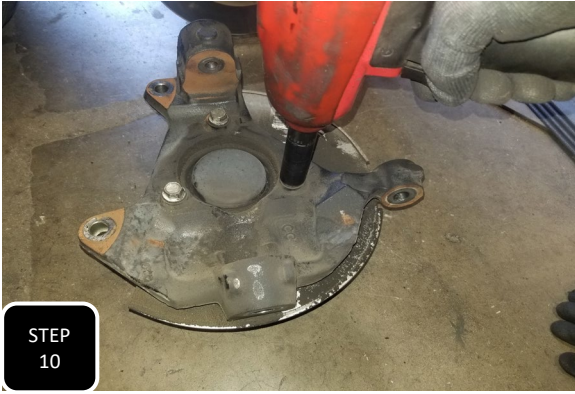
Step 7 Unbolt the ABS sensor, separate, and hang up out of the way.



Step 8 Loosen both the upper and lower ball joint nuts, but do not remove.



Step 9 Brake each ball joint loose by hitting the side of the spindle with a hammer, right at the ball joint. The nut will catch the spindle, then remove the spindle.



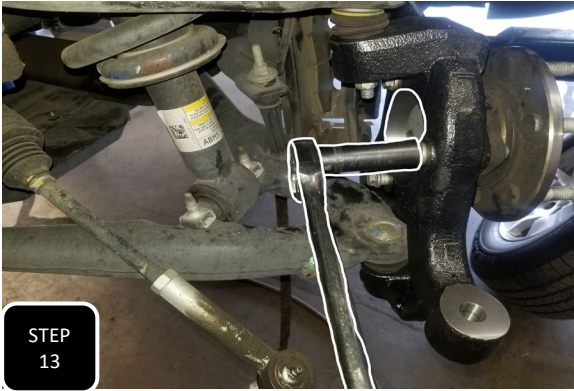
Step 10 Remove the 3 hub mounting bolts and separate the hub from the spindle.



Step 11 Locate the appropriate new spindle for the side you are working on and attach it to the truck using the factory ball joint nuts. Next, tighten to factory specs. **NOTE: IF YOUR TRUCK HAS ALUMINUM CONTROL ARMS, YOU MAY NEED TO CLEARANCE THE END OF THE CONTROL SO THAT IT DOES NOT CONTACT THE BACK SIDE OF THE SPINDLE.**



Step 12 4wd models will need to cut off the excess threads of the upper ball joint to clear the dust boot of the front axle. **NOTE: WE HAVE ALSO PROVIDED A THIN NUT AND LOCK WASHER FOR MODELS WHICH REQUIRE A LITTLE MORE CLEARANCE DUE TO A LARGER CV BOOT.**



Step 13 Attach the hub to the new spindle using the factory bolts and tighten to factory specs. **NOTE: THE FACTORY DUST SHIELD WILL "NOT" BE RE-INSTALLED.**



Step 14 Re-attach the ABS sensor using the factory allen head bolt and tighten. Next, attach the ABS wire to the top of the spindle using the provided loom clamp around the rubber grommet on the ABS line and the factory 6mm bolt.



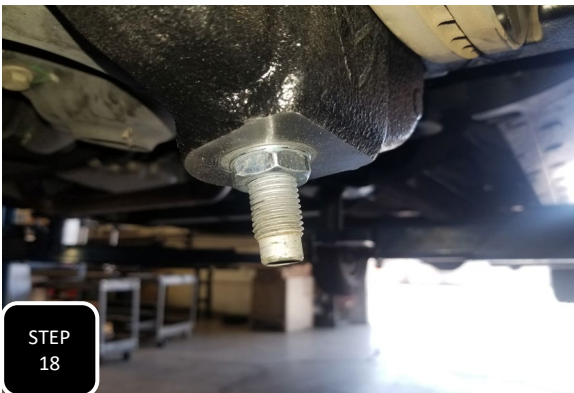
Step 15 Slide the rotor over the wheel studs and secure it using the factory retainer bolt.



Step 16 Re-attach the brake caliper using the factory bolts and tighten down to factory specs.



Step 17 Attach the tie rod to the spindle using the factory nut and tighten to factory specs.



Step 18 If you plan on running 18" rims then you will need to replace the factory lower ball joint nut with the provided low profile nut and lock washer, then cut off the remainder of the lower ball joint threads.



Step 19 If planning on running 18" rims, you will also need to cut off the unthreaded excess of the outer tie rod shank to clear the wheel.

Double check the vehicle's tow before driving

Always have your vehicles alignment checked after modifying the suspension

The vehicle's head lights will need to be re-adjusted after changing the stance of the vehicle

Always re-torque all bolts after 500 miles of driving



MaxTrac
s u s p e n s i o n

RIDE HEIGHT SHEET

*THIS SHEET MUST BE FILLED OUT PRIOR TO CALLING WITH ANY DISCREPENCIES

YEAR _____ MAKE _____ MODEL _____

4WD / 2WD / AWD

MEASUREMENTS

*MOST ACCURATE MEASUREMENT IS FROM THE BOTTOM OF THE RIM, STRAIGHT UP TO THE BOTTOM OF THE FENDER

*TRUE HEIGHT WONT BE ACCURATE UNTIL VEHICAL IS ALIGNED

*THE VEHICLE'S CASTER WILL BE INCREASED OR DECREASED IF ONLY THE FRONT OF THE VEHICLE IS MODIFIED

	BEFORE	AFTER	DIFFERENCE
DRIVER FRONT	_____	_____	_____
DRIVER REAR	_____	_____	_____
PASSENGER FRONT	_____	_____	_____
PASSENGER REAR	_____	_____	_____

LIMITED LIFETIME WARRANTY

Max Trac Suspension makes no warranty, expressed or implied, as to the merchantability, fitness for purpose, description, quality, productiveness, accuracy or any other matter with respect to every product, all such warranties being hereby specifically and expressly disclaimed by Max Trac. Max Trac may offer technical advice or assistance with regard to the products based on laboratory and/or field experience and customer understands and agrees that such advice represents only good faith opinions and does not constitute a warranty or guarantee. The sole and express warranty provided by Max Trac is to warrant that the products sold as listed comply with Max Trac's specification at the date and time of manufacture. Max Trac makes no warranty that such products shall meet such specification at any time after installation of products. Use of such product is specifically not warranted, and Max Trac specifically excludes from this express warranty parts subject to normal wear and tear after one year, finish after one year, damage resulting from failure to follow recommendations in installation manuals, competition or off-road use, and damages caused by aftermarket products. Max Trac's liability and customer's exclusive remedy for any breach of this limited express warranty is limited to repair, replacement, or refund at Max Trac's option and in Max Trac's sole discretion. There are no warranties which extend beyond the description on the face hereof.

Our limited lifetime warranty excludes the following items: bushings, bump stops, ball joints, tie rod ends, rod end/heim joints, and shock absorbers. These parts are subject to immediate wear and tear and are not considered defective when worn. They are warranted for twelve (12) months from the date of purchase only for defects in workmanship.

This Max Trac warranty is void if (1) the vehicle is not aligned after kit installation, (2) proper maintenance is not routinely performed, (3) the Max Trac products are misused or abused in any way in either installation or service, or (4) the products are used in a way that violates federal, state, or local law or regulation in any respect. Max Trac is not responsible for vehicle compatibility with other aftermarket products. Warranty coverage does not include consumer opinions regarding ride comfort, fitment and design after product installation.

Max Trac reserves the right to change, modify or cancel this warranty without prior notice.

WARRANTY RETURN

Contact Maxtrac by sending an email with a copy of the original purchase receipt, along with photographs clearly illustrating the failure mode.

1. Upon validating the information provided, Maxtrac will issue a Return Manufacturer Authorization number (RMA).
2. Return your product to Max Trac Suspension at your expense in order to execute a claim under this warranty.
3. Include the RMA on the outside of the box. Any returns without the RMA will be refused.

NON-WARRANTY RETURN CREDIT POLICY

Your item must be in its original unused and resalable condition to be returned, unless there is a manufacturing defect. You must return the item within 30 days of your purchase. Otherwise, there will be an additional restocking fee.

1. Please contact Max Trac Suspension at (844) 535-1668 to obtain a Return Manufacturer Authorization Number (RMA).
2. Return your product to Max Trac Suspension at your expense.
3. Include the RMA on the outside of the box. Any returns without the RMA will be refused.

Return Exceptions

Merchandise that has been installed, used, or altered may be subject to no credit.

Restocking Fee

All items are subject to a restocking fee based on the condition of the packaging and product.

Max Trac Suspension does not credit shipping and handling. Credit minus applicable restocking fee will be determined and issued within 10 business days of product receipt.

All returns will be credited to your Maxtrac account.



INSTALLATION WARNINGS

READ INSTRUCTIONS AND WARNINGS COMPLETELY PRIOR TO INSTALLATION.

MA TRAC IS NOT RESPONSIBLE FOR ANY DAMAGE OR INJURY DUE TO IMPROPER INSTALLATION OR MAINTENANCE.

Installer is responsible to insure a safe and controllable vehicle after performing modifications. All steps and procedures described in these instructions were performed while the vehicle was properly supported on a two post vehicle lift with safety jacks. Included instructions are recommended guidelines only.

Max Trac Suspension recommends reference to the OE Service Manual corresponding to the model and year of vehicle when either disassembling or assembling factory and related components.

Use caution during all disassembly and assembly steps to insure suspension components are not over extended, causing damage to any vehicle components and parts included in this kit. Unless otherwise specified, tighten all bolts and fasteners to standard torque specifications listed within the OE Service Manual.

Suspension components that use rubber or urethane bushings should be tightened with the vehicle at normal ride height. This will prevent premature wear or failure of the bushing and maintain ride comfort.

Larger tire and wheel combinations may increase leverage on suspension, steering, and related components.

Due to payload options and initial ride height variances, the amount of lift is a base figure. Final ride height dimensions may vary in accordance to original vehicle ride height. Always measure the vehicle ride height prior to beginning of installation.

MA TRAC SUSPENSION DOES NOT ADVISE USING WHEELS WIDER THAN 9" OR WHEELS WITH LESS THAN 4.5" BACKSPACING. DOING SO WILL RESULT IN VOIDING ANY AND ALL MANUFACTURER WARRANTIES

Max Trac Suspension does not recommend the combined use of suspension lifts, body lifts, or other lifting devices.

Final Checks Adjustments

Once the vehicle is lowered to the ground, check all parts which have rubber or urethane components to ensure proper torque. Torque lug nuts to the wheel manufacturer specs.

Move vehicle backwards and forwards a short distance to allow suspension components to settle. Turn the front wheels completely left then right and verify adequate tire, wheel, brake line, and ABS wire clearance.

Test and inspect steering, brake and suspension components for tightness and proper operation. Inspect brakes, hoses, and ABS lines for adequate slack at full extension, and adjust as necessary.



ADDITIONAL WARNINGS

WARNING

Max Trac Suspension products should ONLY be installed by a certified professional mechanic with experience working on and installing suspension products. Professional knowledge and skill will typically yield the best installation results.

If you need a list of installers in your area, please contact Max Trac Suspension customer service to find one of our authorized dealers. Max Trac Suspension does not warrant work performed by any dealer, installer, or mechanic.

- All lifted vehicles may require additional driveline modifications and/or balancing.
- A factory Service Manual for your specific Year/ Make / Model should be referenced during installation.
- Use of a vehicle hoist will greatly reduce installation time.
- Speedometer / computer calibration is required if changing +/- from factory tire diameter.
- Vehicle must be in excellent operating condition. Repair or replace any and all worn or damaged components prior to installation.

FAILURE TO PERFORM POST INSTALLATION INSPECTION AND/OR CHECKS MAY RESULT IN VEHICLE COMPONENT DAMAGE AND/OR PERSONAL INJURY OR DEATH.

RECHECK ALL HARDWARE FOR PROPER TORQUE VALUES AFTER 500 MILES, AND THEN PERIODICALLY AT EACH SERVICE INTERVAL THEREAFTER.

Vehicle Handling Warning

Increasing the height of your vehicle raises the center of gravity and **WILL** affect stability and control. Use caution on turns and when steering. Vehicles with larger tires and wheels will handle differently than stock vehicles. Take time to familiarize yourself with the handling of your vehicle after product installation.

Wheel Alignment/Headlamp Adjustment

It is necessary after installation to have a wheel alignment performed by a certified alignment technician. Align the vehicle to factory specifications. It is recommended that your vehicle alignment be checked after any off-road driving. In addition to vehicle alignment, it is necessary to check and adjust vehicle head lamps for proper aim and alignment. If the vehicle is equipped with active or passive safety/collision monitoring and / or avoidance systems including, but not limited to, camera-or radar-based systems, check and adjust your vehicle's systems for proper aim and function.

Braking Warning

Generally, braking performance and capabilities are decreased when significantly larger or heavier tires and wheels are used. Take this into consideration while driving. Also, changing axle gear ratios or using tires that are taller or shorter than factory height will cause an erroneous speedometer reading. On vehicles equipped with an electronic speedometer, the speed signal impacts other important functions as well. Speedometer recalibration for both mechanical and electronic types is highly recommended.



SAFETY WARNINGS

SAFETY WARNING

MISUSE OF THIS PRODUCT COULD LEAD TO INJURY OR DEATH.

- Suspension systems or components that enhance the on and off-road performance of your vehicle may cause it to handle differently than it did from the factory. EXTREME CARE must be used to prevent loss of control or vehicle rollover during operation.
- ALWAYS operate your vehicle at reduced speeds and maintain distance between vehicles and obstacles to ensure your ability to control your vehicle under all driving conditions. Failure to drive safely may result in serious injury or death to the driver and passengers.
- Driver and passengers must ALWAYS wear seat belts, avoid rapid steering angles and rates and other sudden maneuvers.
- You should NEVER operate your vehicle under the influence of alcohol or drugs.
- Please check all factory components for excessive wear and tear. Please replace worn factory parts before installing any suspension kits. Failure to do so will void any MaxTrac warranty.
- Please inspect all wheel bearings and hub bearings for excessive wear and replace worn components before installing suspension kits. These hub and wheel bearings may wear out sooner with installation of larger tires and wheels. MaxTrac does not warranty these factory parts at any time, also using any wheel that MaxTrac does not recommend will void any warranty of MaxTrac components.
- Constant maintenance is required to keep your vehicle safe. Thoroughly inspect your vehicle before and after every off-road use.
- It is the responsibility of the retailer and/or the installer to review all state and local laws with the end user of this product related to bumper height laws and the lifting of a vehicle before the purchase and installation of any MaxTrac products.
- It is the responsibility of the driver to check the area around the vehicle for obstructions, people, and animals before moving the vehicle.
- All lifted vehicles have increased blind spots. Take note of these prior to operating the vehicle.

DAMAGE, INJURY AND/OR DEATH CAN OCCUR IF ANY OF THE ABOVE WARNINGS ARE NOT FOLLOWED.



PART# 221303 (Single Strut)
371303 (Pair of Struts)

2007-2018 GM 1500 2WD/4WD
2007-2020 GM SUV 2WD/4WD
(DOES NOT FIT MAGNE-RIDE MODELS)

0-3" FRONT LOWERING STRUTS



3 HOUR INSTALL TIME



Recommended Tire size
31x10.50



WARNING

HARDWARE LISTED IS
FOR A PAIR OF STRUTS

Components
(2) LOWERING STRUT
(2) LOWER COIL SEAT
(2) SNAP RING
(2) SNAP RING RETAINER
(2) M14-2.0 NYLOCK NUT

***SETTING STRUTS AT 3 INCHES OF DROP MAY CAUSE THE VEHICLE TO RIDE STIFF AND NOT ALIGN TO FACTORY SPECS**

***DOES NOT WORK WITH MAGNE-RIDE/ ADAPTIVE RIDE. MODELS WITH RIDE HEIGHT SENSORS ON THE SUSPENSION**

***STRUT GROOVES ARE DESIGNED FOR DROP AS A STAND ALONE COMPONENT. IF INSTALLING 2" DROP SPINDLES TOO, THEN THE STRUT SHOULD BE SET TO 1" OR 2" DROP FOR A TOTAL OF 3" OR 4" OF DROP**

Please double check the parts list before beginning installation to ensure all parts are present. If there is something missing, please contact Maxtrac Suspension (714) 630-0363. Please have the boxes present if parts are missing or damaged

PRIOR TO INSTALLATION:

- 1. Factory service manual is recommended to have on hand.**
- 2. Secure and properly block vehicle prior to beginning installation.**
- 3. Always wear safety glasses when using power tools or working under the vehicle**
- 4 Modification to any part will void the warranty associated with that product**

AFTER REMOVING PARTS FROM VEHICLE, SAVE HARDWARE FOR REINSTALLATION

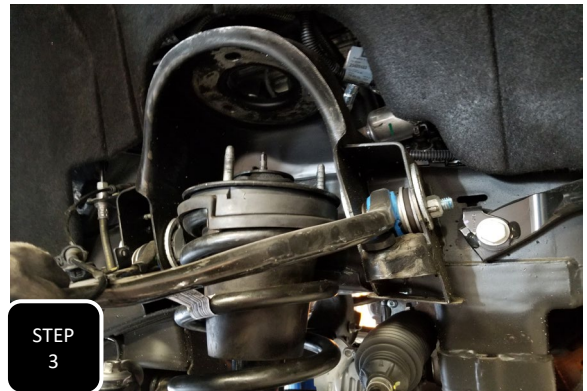
REVISED 3/7/2025



Step 1 Jack up the front of your vehicle and support under the frame with jack stands.



Step 2 Unbolt and remove the sway bar end link.



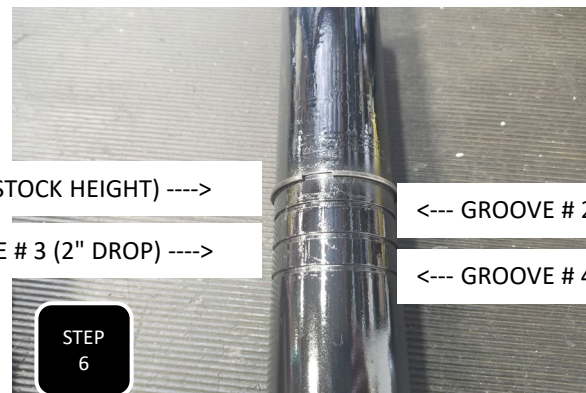
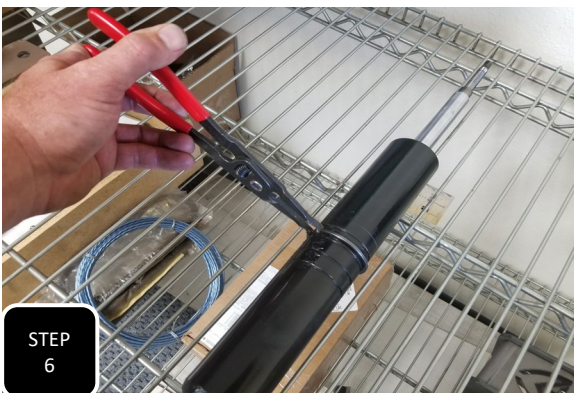
Step 3 Unbolt the two mounting bolts at the bottom of the strut along with the three nuts at the top of the strut and remove the strut through the opening in the lower control arm.



Step 4 Using an automotive coil/strut compressor, compress the coil so that the strut can be disassembled safely and then remove the nut at the center of the strut top.



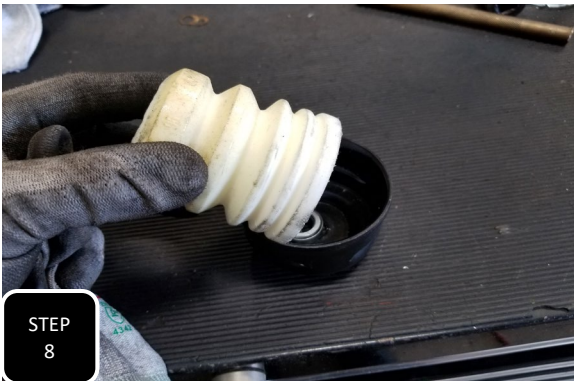
Step 5 Once the nut is removed, pull the strut top off, remove the bump stop and remove the strut out the bottom of the coil.



Step 6 Locate your new struts and set the ring to the proper groove according to the chart above. Make sure the snap ring fully engages into the groove.



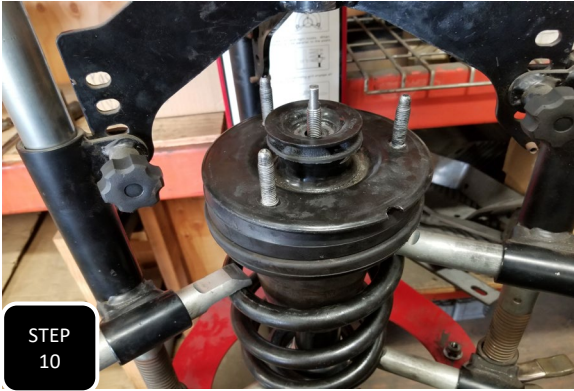
Step 7 Slide the snap ring retainer over the snap ring. If the retainer does not slide over the ring, then tap the ring with a hammer to fully seat it and then install the retainer. **NOTE: THE RETAINER MUST GO COMPLETELY OVER THE SNAP RING AND SEAT OR YOUR SUSPENSION COULD FAIL.**



Step 8 Locate the factory bump stop, remove it from the metal cup, and cut one rib off of the end of it.



Step 9 Slide the new coil seat onto the strut, then install the strut up through the bottom of the coil. Next, slide the bump stop onto the shaft of the shock.



Step 10 Re-install the strut top and tighten down using the provided M14 nylock nut. **NOTE: MAKE SURE TO PROPERLY CLOCK THE STRUT TOP WITH THE BOTTOM OF THE STRUT.**

Step 11 Reverse steps 2 and 3 for re-installation.

AFTER MODIFYING YOUR SUSPENSION

HAVE THE VEHICLE'S ALIGNMENT CHECKED

PROPERLY ADJUST YOUR HEAD LIGHTS FOR THE NEW STANCE OF THE SUSPENSION

RE-TORQUE ALL BOLTS AFTER 500 MILES



MaxTrac
s u s p e n s i o n

RIDE HEIGHT SHEET

*THIS SHEET MUST BE FILLED OUT PRIOR TO CALLING WITH ANY DISCREPENCIES

YEAR _____ MAKE _____ MODEL _____

4WD / 2WD / AWD

MEASUREMENTS

*MOST ACCURATE MEASUREMENT IS FROM THE BOTTOM OF THE RIM, STRAIGHT UP TO THE BOTTOM OF THE FENDER

*TRUE HEIGHT WONT BE ACCURATE UNTIL VEHICAL IS ALIGNED

*THE VEHICLE'S CASTER WILL BE INCREASED OR DECREASED IF ONLY THE FRONT OF THE VEHICLE IS MODIFIED

	BEFORE	AFTER	DIFFERENCE
DRIVER FRONT	_____	_____	_____
DRIVER REAR	_____	_____	_____
PASSENGER FRONT	_____	_____	_____
PASSENGER REAR	_____	_____	_____



INSTALLATION WARNINGS

READ INSTRUCTIONS AND WARNINGS COMPLETELY PRIOR TO INSTALLATION.

MA TRAC IS NOT RESPONSIBLE FOR ANY DAMAGE OR INJURY DUE TO IMPROPER INSTALLATION OR MAINTENANCE.

Installer is responsible to insure a safe and controllable vehicle after performing modifications. All steps and procedures described in these instructions were performed while the vehicle was properly supported on a two post vehicle lift with safety jacks. Included instructions are recommended guidelines only.

Max Trac Suspension recommends reference to the OE Service Manual corresponding to the model and year of vehicle when either disassembling or assembling factory and related components.

Use caution during all disassembly and assembly steps to insure suspension components are not over extended, causing damage to any vehicle components and parts included in this kit. Unless otherwise specified, tighten all bolts and fasteners to standard torque specifications listed within the OE Service Manual.

Suspension components that use rubber or urethane bushings should be tightened with the vehicle at normal ride height. This will prevent premature wear or failure of the bushing and maintain ride comfort.

Larger tire and wheel combinations may increase leverage on suspension, steering, and related components.

Due to payload options and initial ride height variances, the amount of lift is a base figure. Final ride height dimensions may vary in accordance to original vehicle ride height. Always measure the vehicle ride height prior to beginning of installation.

MA TRAC SUSPENSION DOES NOT ADVISE USING WHEELS WIDER THAN 9" OR WHEELS WITH LESS THAN 4.5" BACKSPACING. DOING SO WILL RESULT IN VOIDING ANY AND ALL MANUFACTURER WARRANTIES

Max Trac Suspension does not recommend the combined use of suspension lifts, body lifts, or other lifting devices.

Final Checks Adjustments

Once the vehicle is lowered to the ground, check all parts which have rubber or urethane components to ensure proper torque. Torque lug nuts to the wheel manufacturer specs.

Move vehicle backwards and forwards a short distance to allow suspension components to settle. Turn the front wheels completely left then right and verify adequate tire, wheel, brake line, and ABS wire clearance.

Test and inspect steering, brake and suspension components for tightness and proper operation. Inspect brakes, hoses, and ABS lines for adequate slack at full extension, and adjust as necessary.



ADDITIONAL WARNINGS

WARNING

Max Trac Suspension products should ONLY be installed by a certified professional mechanic with experience working on and installing suspension products. Professional knowledge and skill will typically yield the best installation results.

If you need a list of installers in your area, please contact Max Trac Suspension customer service to find one of our authorized dealers. Max Trac Suspension does not warrant work performed by any dealer, installer, or mechanic.

- All lifted vehicles may require additional driveline modifications and/or balancing.
- A Factory Service Manual for your specific Year/ Make / Model should be referenced during installation.
- Use of a vehicle hoist will greatly reduce installation time.
- Speedometer / computer calibration is required if changing +/- from factory tire diameter.
- Vehicle must be in excellent operating condition. Repair or replace any and all worn or damaged components prior to installation.

FAILURE TO PERFORM POST INSTALLATION INSPECTION AND/OR CHECKS MAY RESULT IN VEHICLE COMPONENT DAMAGE AND/OR PERSONAL INJURY OR DEATH.

RECHECK ALL HARDWARE FOR PROPER TORQUE VALUES AFTER 500 MILES, AND THEN PERIODICALLY AT EACH SERVICE INTERVAL THERAFTER.

Vehicle Handling Warning

Increasing the height of your vehicle raises the center of gravity and **WILL** affect stability and control. Use caution on turns and when steering. Vehicles with larger tires and wheels will handle differently than stock vehicles. Take time to familiarize yourself with the handling of your vehicle after product installation.

Wheel Alignment/Headlamp Adjustment

It is necessary after installation to have a wheel alignment performed by a certified alignment technician. Align the vehicle to factory specifications. It is recommended that your vehicle alignment be checked after any off-road driving. In addition to vehicle alignment, it is necessary to check and adjust vehicle head lamps for proper aim and alignment. If the vehicle is equipped with active or passive safety/collision monitoring and / or avoidance systems including, but not limited to, camera-or radar-based systems, check and adjust your vehicle's systems for proper aim and function.

Braking Warning

Generally, braking performance and capabilities are decreased when significantly larger or heavier tires and wheels are used. Take this into consideration while driving. Also, changing axle gear ratios or using tires that are taller or shorter than factory height will cause an erroneous speedometer reading. On vehicles equipped with an electronic speedometer, the speed signal impacts other important functions as well. Speedometer recalibration for both mechanical and electronic types is highly recommended.



SAFETY WARNINGS

SAFETY WARNING

MISUSE OF THIS PRODUCT COULD LEAD TO INJURY OR DEATH.

- Suspension systems or components that enhance the on and off-road performance of your vehicle may cause it to handle differently than it did from the factory. EXTREME CARE must be used to prevent loss of control or vehicle rollover during operation.
- ALWAYS operate your vehicle at reduced speeds and maintain distance between vehicles and obstacles to ensure your ability to control your vehicle under all driving conditions. Failure to drive safely may result in serious injury or death to the driver and passengers.
- Driver and passengers must ALWAYS wear seat belts, avoid rapid steering angles and rates and other sudden maneuvers.
- You should NEVER operate your vehicle under the influence of alcohol or drugs.
- Please check all factory components for excessive wear and tear. Please replace worn factory parts before installing any suspension kits. Failure to do so will void any Max Trac warranty.
- Please inspect all wheel bearings and hub bearings for excessive wear and replace worn components before installing suspension kits. These hub and wheel bearings may wear out sooner with installation of larger tires and wheels. MaxTrac does not warranty these factory parts at any time, also using any wheel that MaxTrac does not recommend will void any warranty of MaxTrac components.
- Constant maintenance is required to keep your vehicle safe. Thoroughly inspect your vehicle before and after every off-road use.
- It is the responsibility of the retailer and/or the installer to review all state and local laws with the end user of this product related to bumper height laws and the lifting of a vehicle before the purchase and installation of any Max Trac products.
- It is the responsibility of the driver to check the area around the vehicle for obstructions, people, and animals before moving the vehicle.
- All lifted vehicles have increased blind spots. Take note of these prior to operating the vehicle.

DAMAGE, INJURY AND/OR DEATH CAN OCCUR IF ANY OF THE ABOVE WARNINGS ARE NOT FOLLOWED.