



STAINLESS STEEL CATBACK DUAL EXHAUST SYSTEM

(2009-2013 SILVERADO 1500 / SIERRA 1500 EXT/CREW CAB)

INSTALLATION INSTRUCTIONS

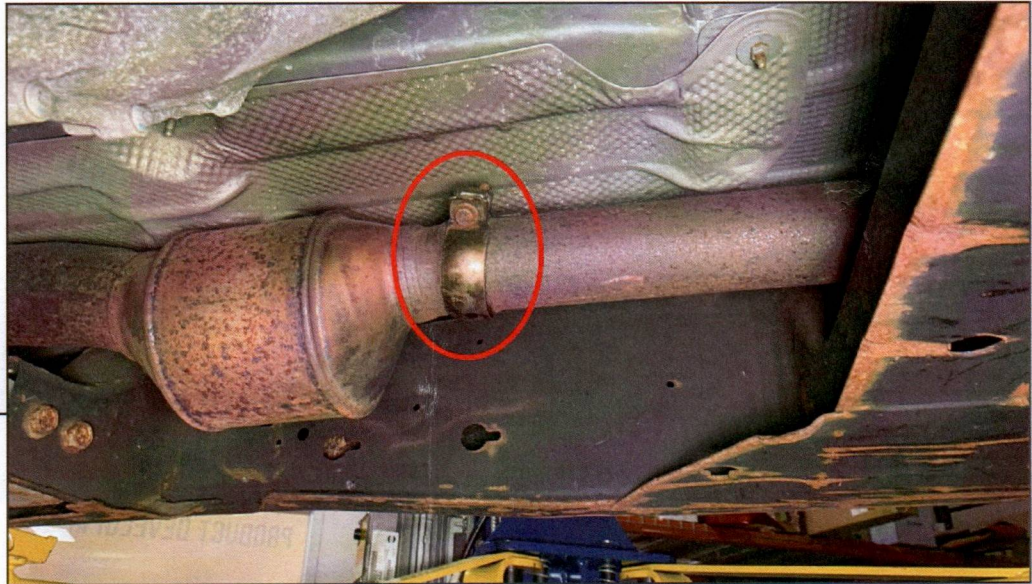
CONTENTS

- (1) Ball Flange Pipe
- (1) Front Pipe
- (1) Extension Pipe
- (1) Muffler
- (1) RH Over Axle Pipe
- (1) LH Over Axle Pipe [Front]
- (1) LH Over Axle Pipe [Rear]
- (2) Exit Pipes
- (2) Exhaust Tips
- (1) Ball Flange Clamp
- (3) 3" Exhaust Clamps
- (7) 2.5" Exhaust Clamps
- (1) Hanger Clamp
- (1) Hanger Bracket
- (2) Square Washers
- (1) Hex Bolt
- (1) Lock Washer
- (1) Flat Washer
- (1) Hex Nut
- (1) Hanger Isolator
- (1) Cable Tie
- (4) Star Washers [Large]
- (2) Star Washers [Small]

TOOLS REQUIRED

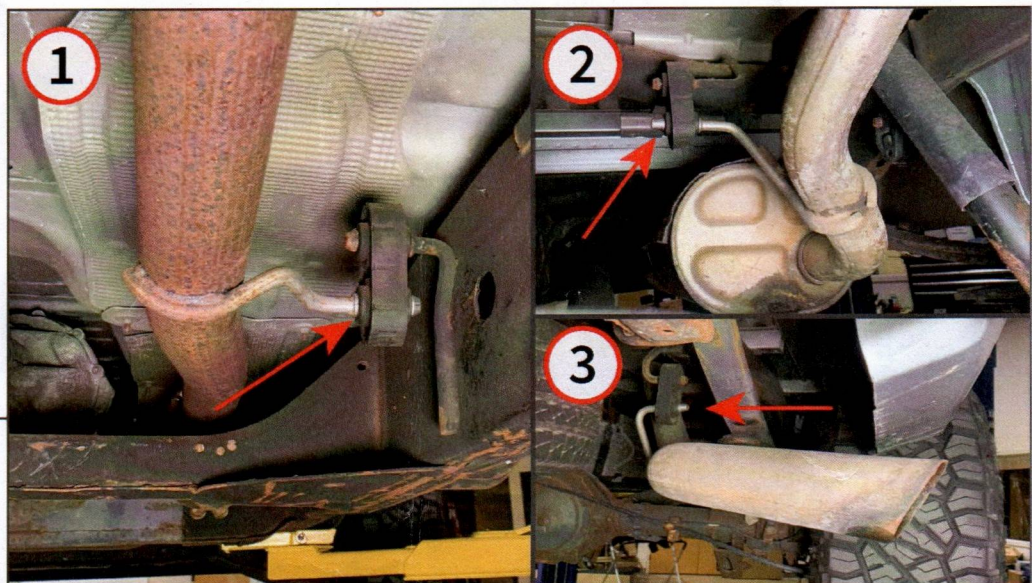
- 13mm, 15mm Socket
- Ratchet
- Pry Bar
- Spray Lubricant
- Floor Jack
- Jack Stands

SKU # S201591



STEP 1

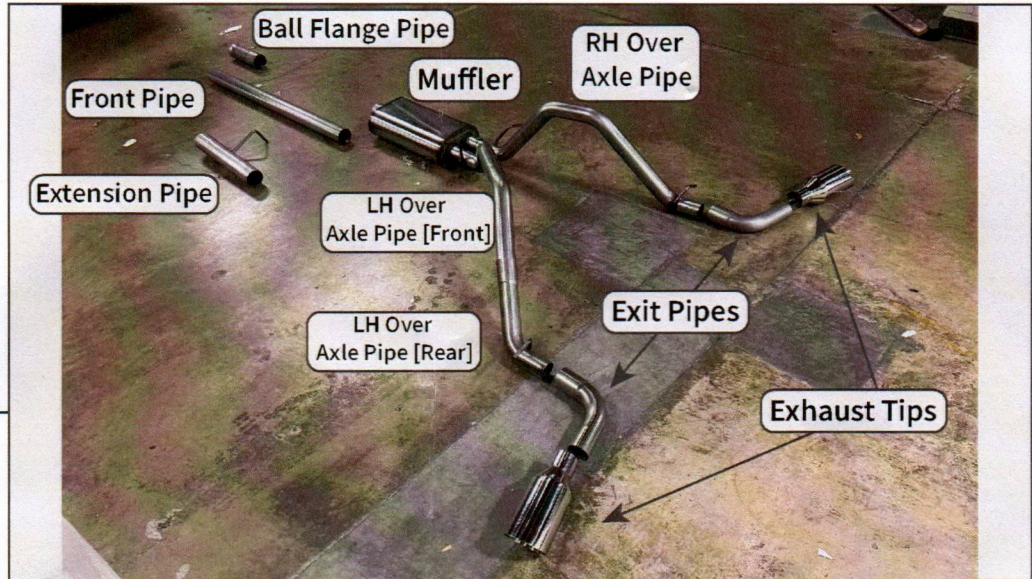
Lift and support the vehicle using a floor jack and jack stands. Locate the (1) exhaust clamp at the front of the vehicle connecting the exhaust system to the catalytic converter. Loosen the clamp using a 13mm socket.



STEP 2

Working from the front of the vehicle towards the rear, locate and remove the (3) rubber exhaust hangers from the vehicle exhaust system. Remove the exhaust system from the vehicle.

Note: Spray lubricant can be used to assist rubber hanger removal.



STEP 3

Lay out and identify all exhaust components.

Note: The extension pipe is only used for vehicles with the following configuration:
Extended Cab w/ 8ft Bed.



STEP 4

Fit the included ball flange pipe to the vehicle catalytic converter pipe, and loosely secure using the included ball flange clamp. Do not fully tighten at this time to allow for later adjustments.

Fit (1) 3" exhaust clamp to the end of the ball flange pipe to prepare for the front pipe.



STEP 5

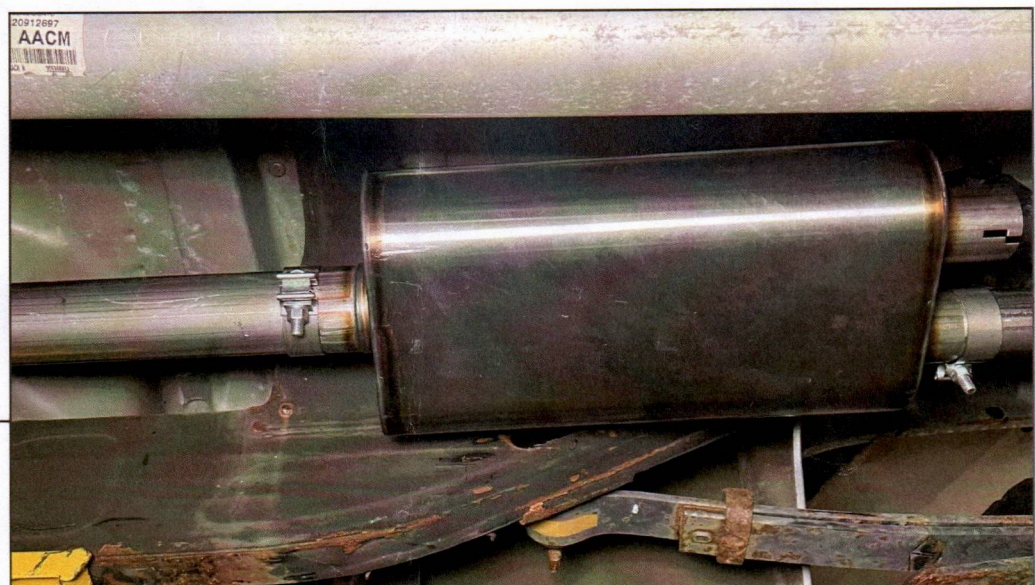


Fit the included front pipe to the ball flange pipe, and loosely secure using the previously placed 3" clamp. Do not fully tighten at this time to allow for later adjustments. Fit the (1) hanger clamp to the front pipe, and fit into the vehicle rubber hanger.

Fit (1) 3" exhaust clamp to the end of the front pipe to prepare for the muffler.

Note: It is recommended to place a floor jack under the front pipe to ensure exhaust is level.

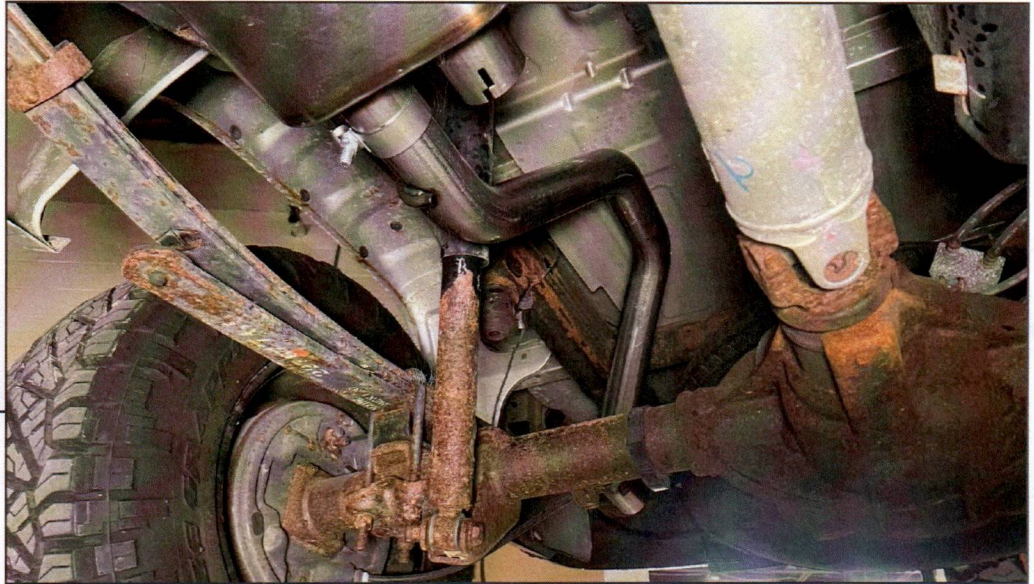
STEP 6



Fit the muffler to the front pipe, and loosely secure using the previously placed 3" clamp. Do not fully tighten at this time to allow for later adjustments.

If the vehicle requires the extension pipe, install the extension pipe before the muffler using the included 3" exhaust clamps.

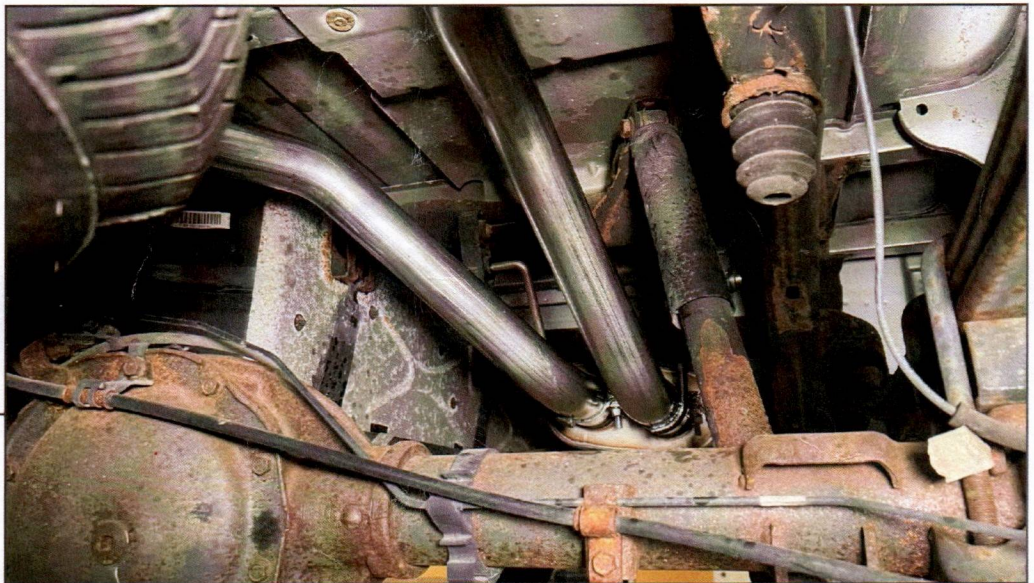
Fit the (2) 2.5" exhaust clamps to the end of the muffler to prepare for the over axle pipes.



STEP 7

Fit the RH over axle pipe to the muffler, and loosely secure using the previously placed 2.5" clamp. Fit the pipe hangers into the OEM rubber hangers. Do not fully tighten at this time to allow for later adjustments.

Fit the (1) 2.5" exhaust clamp to the end of the over axle pipe to prepare for the exit pipe.



STEP 8

Fit the LH over axle pipe [front] to the muffler, and loosely secure using the previously placed 2.5" clamp. Fit the pipe hanger into the OEM rubber hanger.

Fit the (1) 2.5" exhaust clamp to the end of the over axle pipe to prepare for the over axle pipe [rear].



STEP 9

Along the LH side frame, install the included hanger bracket to the frame pre-drilled frame hole using the included hex hardware and square washers.



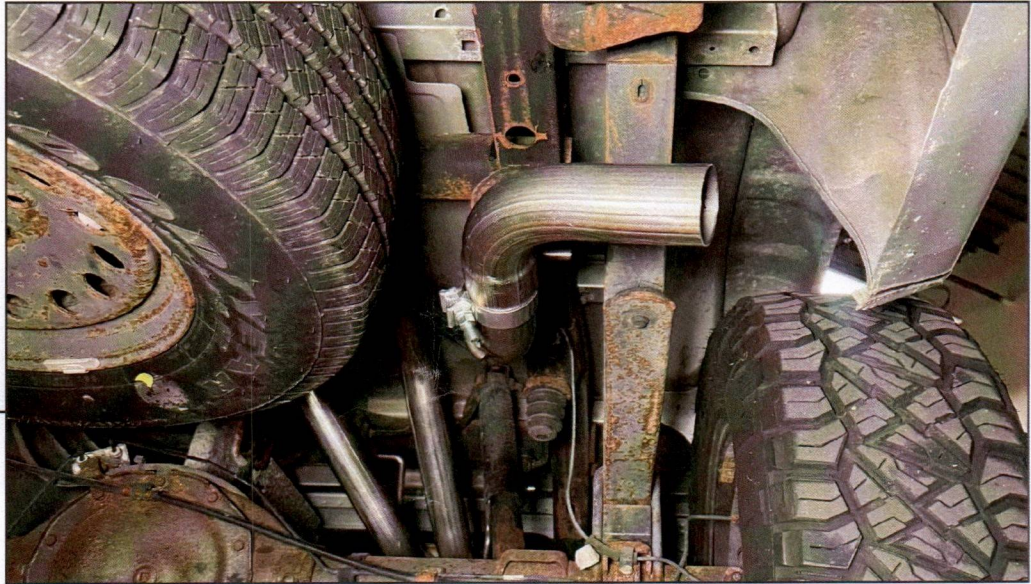
STEP 10

Fit the LH over axle pipe [rear] to the LH over axle pipe [front], and loosely secure using the previously placed (1) 2.5" clamp. Fit the pipe hanger to the previously mounted hanger bracket using the included isolator. Secure the isolator using the included star washers.

Fit the (1) 2.5" exhaust clamp to the end of the over axle pipe [rear] to prepare for the exit pipe.



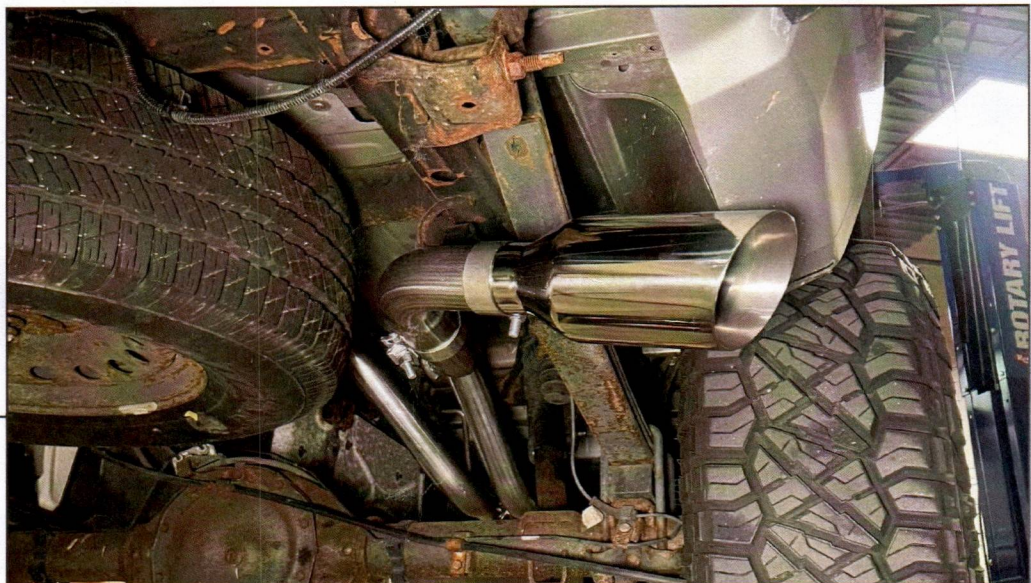
STEP 11



Fit each exit pipe to the over axle pipe on each side of the vehicle, and loosely secure using the previously placed (1) 2.5" clamp. Do not fully tighten at this time to allow for later adjustments.

Fit the (1) 2.5" exhaust clamp to the end of the exit pipe to prepare for the exhaust tips.

STEP 12



Fit each exhaust tip to the exit pipe on each side of the vehicle, and loosely secure using the previously placed (1) 2.5" clamp. Do not fully tighten at this time to allow for later adjustments.



STEP 13

Level the muffler so the bottom of the muffler is perpendicular to the vehicle frame. Adjust each exhaust pipe to best fit the hangers/pipes. Then, adjust the exit pipes and tips to symmetrically fit the vehicle.

Tighten each exhaust band clamp to 45ft. lbs. If necessary, use the included cable tie to ensure brake line to exhaust clearance.

Installation is now complete.