



---

# TAILGATE ASSIST

(2017+ F-250 / F-350)

---

## INSTALLATION INSTRUCTIONS

### CONTENTS

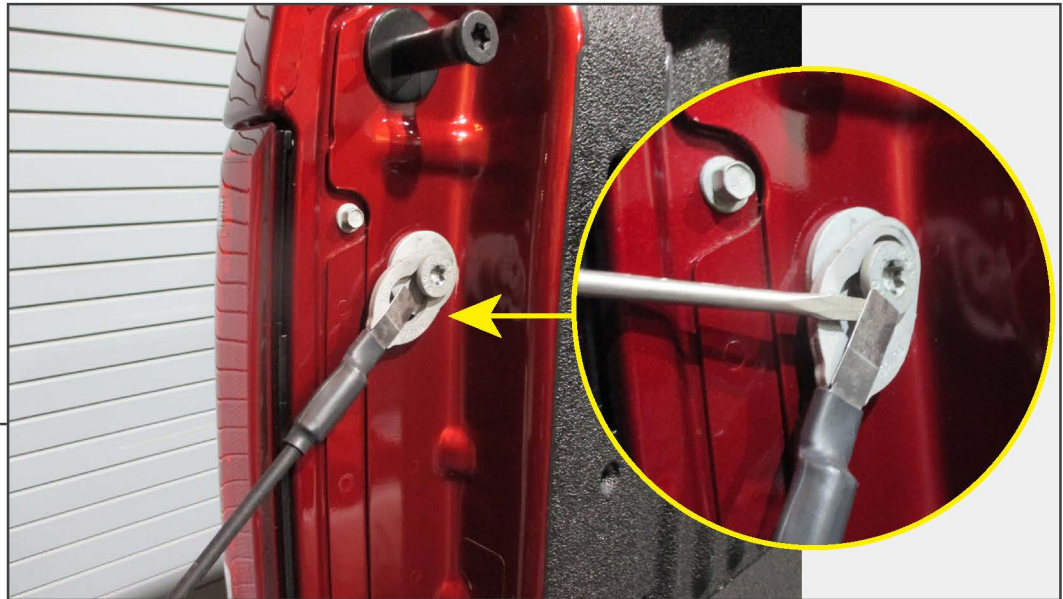
---

- (1) Shock Absorber
- (1) Bed Mount
- (1) Tailgate Mount
- (1) Allen Bolt
- (1) Torx Key

### TOOLS REQUIRED

---

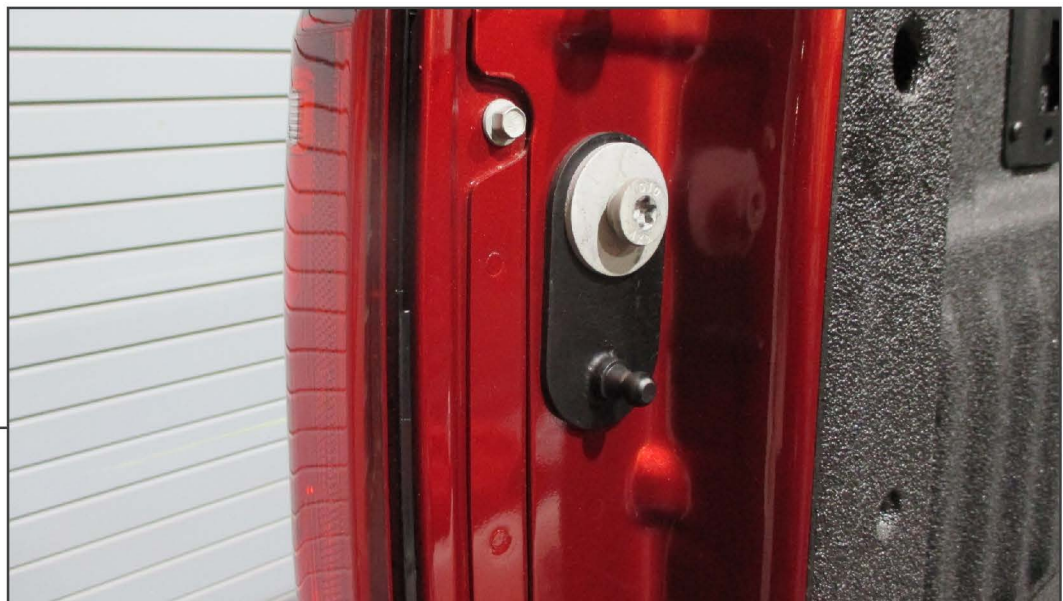
- 10mm Socket
- Ratchet
- Flathead Screwdriver
- T-50 Torx Bit (Provided)



**STEP 1**

Tailgate Assist only installs to Driver's Side of vehicle.

Disconnect the tailgate limiting strap using a flathead screwdriver. Loosen the T-50 Torx tailgate bolt.



**STEP 2**

Install the (1) bed mount under the tailgate bolt. Once tight, re-install the tailgate limiting strap.



---

**STEP 3**

Locate (2) 10mm bolts on the tailgate. Loosen the (1) LH 10mm bolt, while removing the (1) RH 10mm bolt. Install the tailgate mount, and secure into place using (1) Allen bolt and tightening the (1) LH original 10mm bolt.



---

**STEP 4**

Install the shock absorber as shown with the body towards the top.

Installation is now complete.