



# Installation Guide

Raptor Style Mesh Grille  
For 2011-2016 Ford F250

SKU # AMFMFA00126 & AMFMFA00127

## STEP 1



Open the hood,remove four 10-millimeter bolts along the top of the grille. Carefully lean the grille forward and locate the metal clips at the bottom,use a long flat blade screwdriver to push down and release these five clips. Then pull the grille off the truck.

## STEP 2



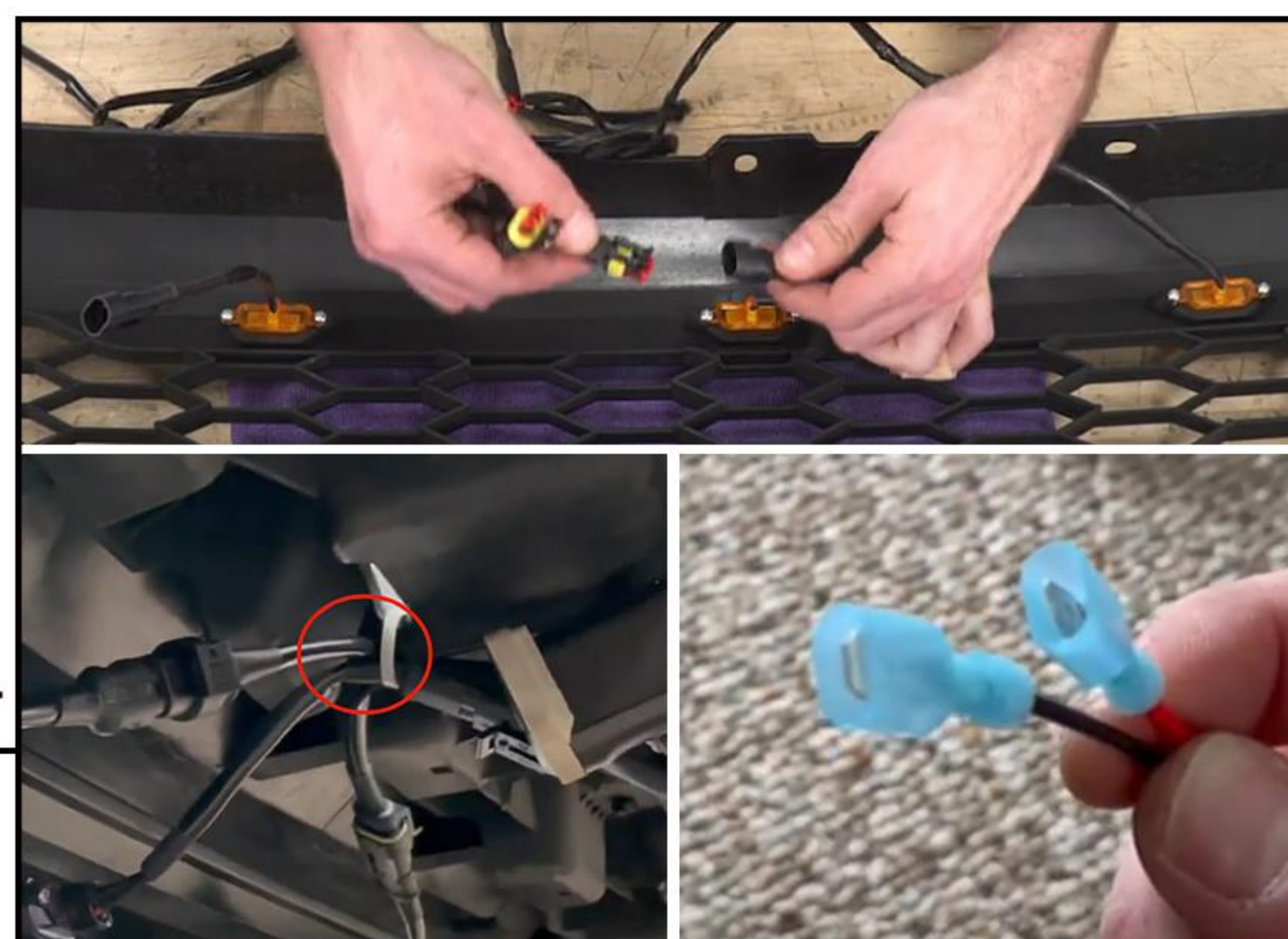
Remove five plastic push clips and one 10-millimeter bolt to remove the upper grille shroud from the original grille.(The hardware will be reused).Transfer the upper grille shroud to the new grille with the original mounting hardware.

## STEP 3



Take out the new grille,loosen 5 screws to remove the horizontal bar.Remove the "Ford" emblem from the original car and install it on the horizontal bar.Finally, tighten 5 screws again to install the horizontal bar.

## STEP 4



Install the five lower retaining clips to the new grille. Connect each amber light to the wiring harness and tie it up.Crimp the male spade connectors onto the positive and negative.

## STEP 5



Remove 4 bolts to disconnect the headlight,place T-taps on the positive and negative wires of the headlights separately,then plug the red wire of the grille into the positive wire of the headlight and black to the negative wire.Reinstall the headlight.

## STEP 6



Align the grille with the clips at the bottom,press hard. Follow the step 1 in reverse order to reinstall the new grille. Finally,complete the installation.