

FRONT BUMPER MOUNTED 20-INCH LED LIGHT BAR AND BRACKET

(2011-2016 F-250 / F-350)

INSTALLATION INSTRUCTIONS

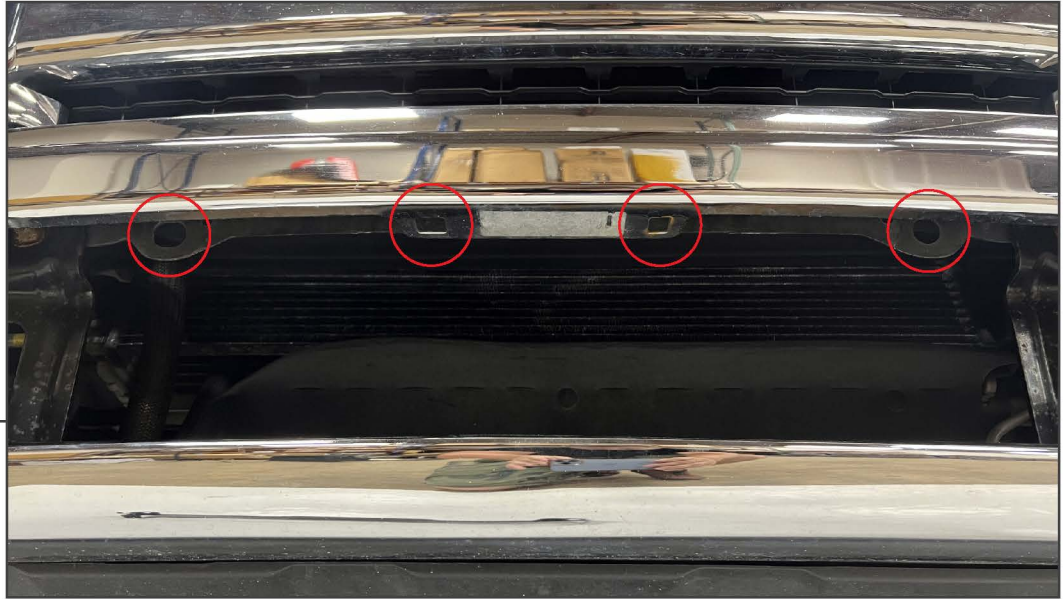
CONTENTS

- (1) LED Light Bar
- (1) Wiring Harness
- (1) Mounting Bracket
- (2) M12x1.75 x 30mm Bolts
- (4) M12 Flat Washers
- (2) M12 Lock Nuts
- (2) M8x1.25 x 25mm Button
Head Allen Bolts
- (2) M8x1.25 x 20mm Cap Head
Allen Bolts
- (2) M8 Lock Washers
- (6) M8 Flat Washers
- (2) M8 Lock Nuts
- (2) M8 Spacers
- (1) 6mm Allen Key

TOOLS REQUIRED

- 13mm, 19mm Socket/Wrench
- Ratchet
- 6mm Allen Key

STEP 1

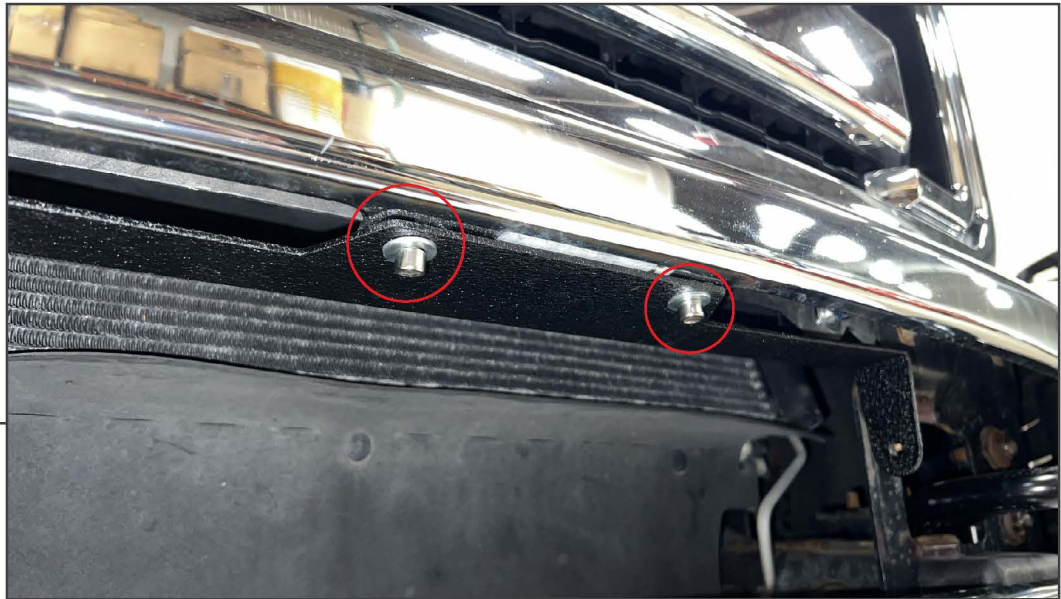


Along the center of the bumper, locate the (4) holes along the inside of the bumper.

STEP 2

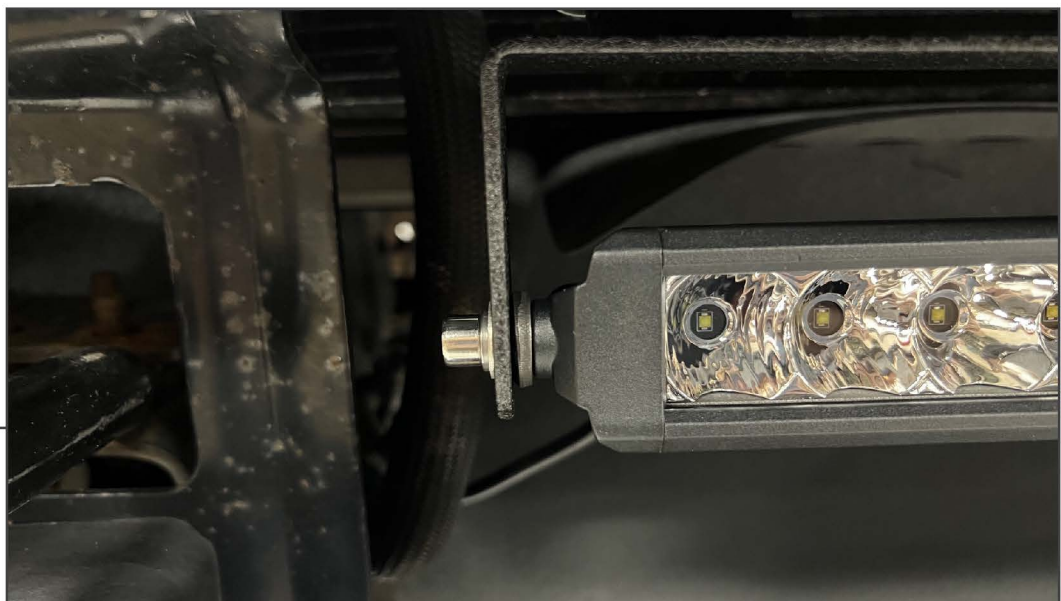


Fit the large mounting bracket holes on the bracket behind the bumper mounting holes, and loosely secure using (1) M12 x 30mm bolt, (2) M12 flat washers, and (1) M12 lock nut per side.



STEP 3

Secure the front of light bar bracket the center of the bumper using (2) M8 x 25mm bolts, (4) M8 flat washers, and (2) M8 lock nuts.



STEP 4

Use the included (2) M8 x 20mm Allen bolts, (2) M8 lock washers, (2) M8 flat washers, and (2) M8 spacers to loosely secure the light bar to the bracket. The spacers will fit between the light bar and the bracket. Ensure the light bar is placed into the bracket so the wiring harness is on the passenger side of the vehicle.

STEP 5



Carefully route the wiring harness across the vehicle.

- Plug the light bar into the harness connector.
- Route switch into vehicle through suitable firewall grommet. Secure switch to dashboard.
- Connect Red ring terminal to battery +.
- Connect Black ring terminal to battery -.
- Mount relay to a secure location.

STEP 6



Test the light bar, and adjust the light bar for best lighting output. Tighten the light bar adjusting hardware once properly adjusted.

Installation is now complete.