



---

# DUAL SIDE EXIT EXHAUST SYSTEM

(2017-2022 F-250 / F-350 - 6.2L & 7.3L)

---

## INSTALLATION INSTRUCTIONS

### CONTENTS

---

- (1) Resonator Delete Pipe
- (1) Front Pipe
- (1) Muffler
- (1) RH Over-Axle Pipe
- (1) LH Over-Axle Pipe
- (1) LH Rear Pipe
- (2) Exit Pipes
- (2) Exhaust Tips
- (8) Exhaust Clamps
- (1) LH Hanger Clamp
- (1) RH Hanger Clamp
- (1) Exhaust Hanger Bracket
- (1) Rubber Hanger
- (2) M10x1.50 x 20mm Bolts
- (2) M10 Lock Washers
- (2) M10 Flat Washers
- (2) Large Star Washers
- (1) Small Star Washer
- (1) Cable Tie

### TOOLS REQUIRED

---

- 10mm, 13mm, 15mm, 16mm Sockets
- Ratchet
- Spray Lubricant
- Pry Bar
- Hammer
- Floor Jack & Jack Stands

SKU # SD65225

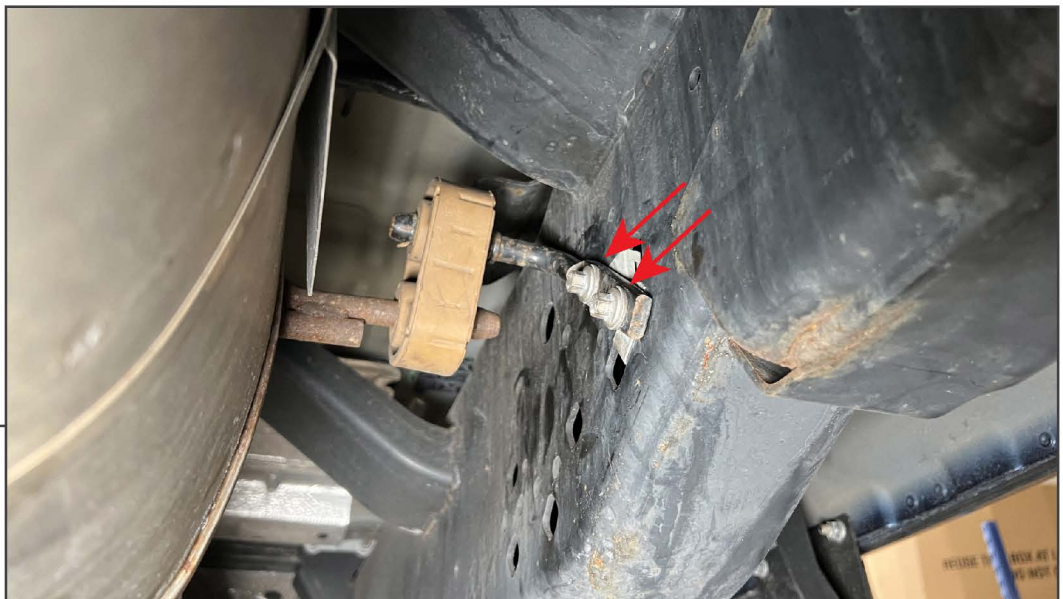
## STEP 1



Safely lift and support the vehicle off of the ground using a floor jack and jack stands.

Loosen (1) exhaust clamp towards the front of the exhaust system.

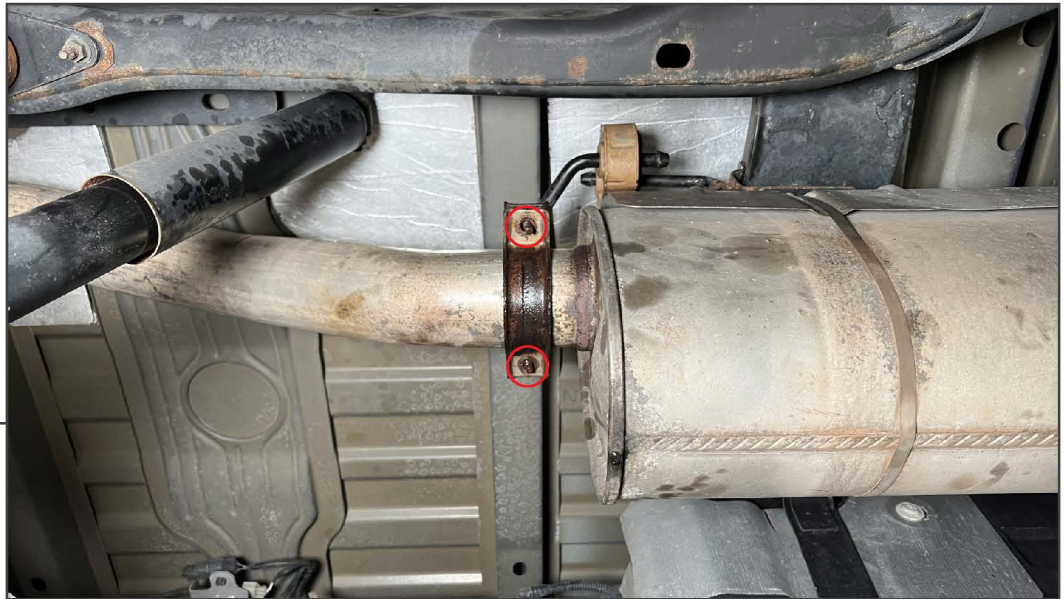
## STEP 2



Remove (2) 10mm bolts from muffler side hanger bracket to the frame.



### STEP 3



Remove (2) 13mm nuts from the rear of the muffler assembly. Then, remove the hanger bracket from the vehicle frame.

### STEP 4



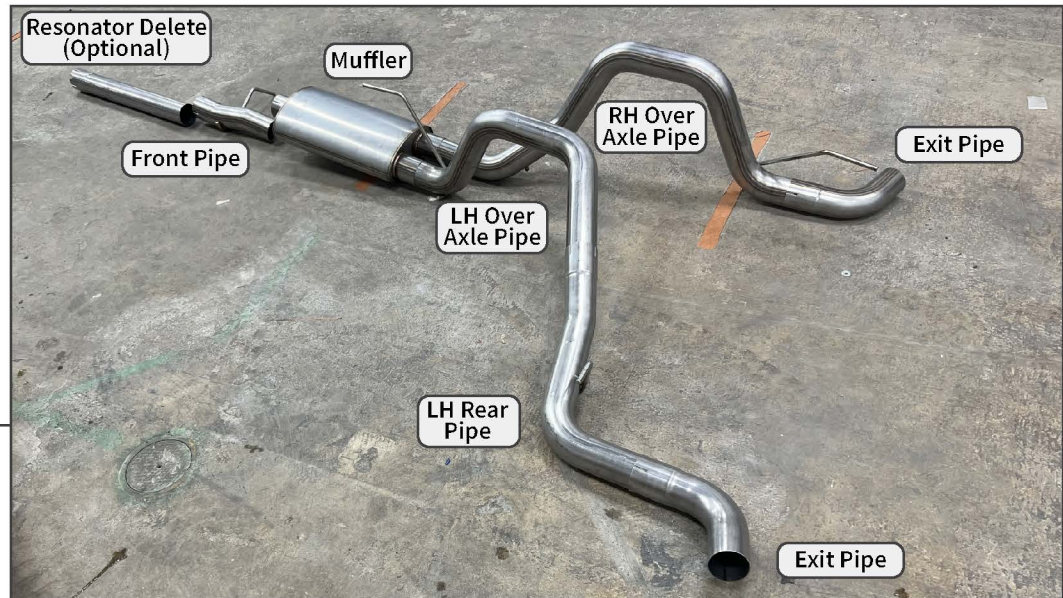
Remove (4) 10mm bolts from the rear hanger bracket.

With a helper, remove the exhaust system from the vehicle. With the exhaust removed, remove the exhaust hangers and re-install the hangers to the vehicle frame in the original orientation reusing the original hardware.



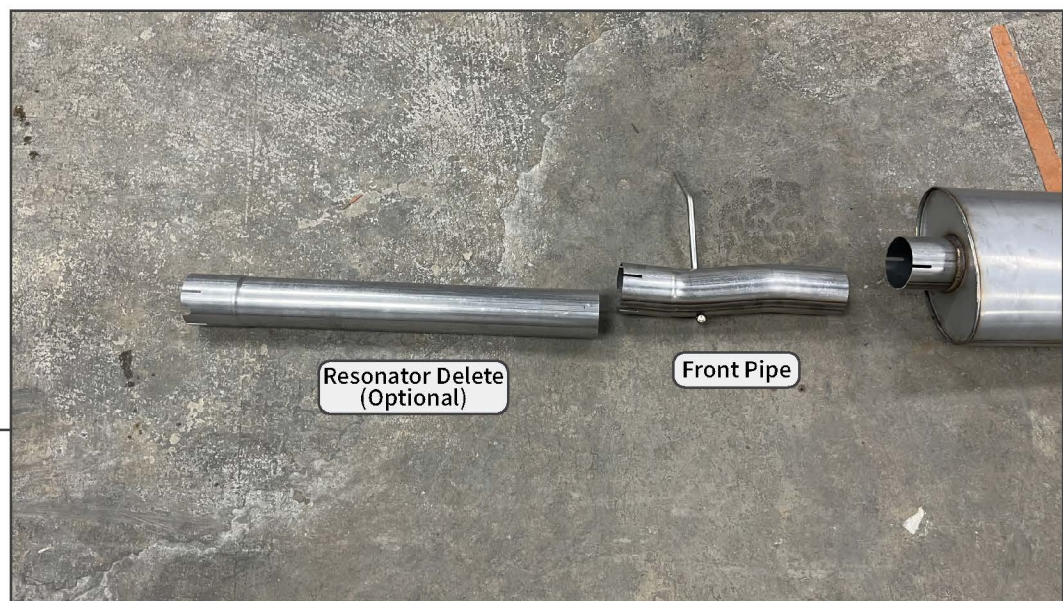


## STEP 5



Lay out and identify the exhaust components.

## STEP 6



**Resonator Delete Pipe (Optional):** If desired, the resonator delete pipe can be used before the exhaust system front pipe. Trimming of this pipe may be necessary for best fit.

If the resonator delete is not desired, re-install the OEM resonator to the vehicle exhaust system using the original clamp. The following steps will instruct using the OEM resonator.





## STEP 7



Along the driver's side frame, locate the threaded bolt holes in the frame. Secure the included hanger bracket to the frame utilizing the bolt holes with the included (2) M10x1.50 x 20mm bolts, (2) M10 lock washers, and (2) M10 flat washers.

If the vehicle is equipped with Overload Springs, re-use the original hardware in the frame.

## STEP 8



Fit (1) exhaust clamp onto the resonator, and then fit the front pipe to the vehicle resonator. Fit the front pipe into the vehicle rubber hanger.

Install (1) exhaust clamp onto the end of the front pipe to prepare for the muffler.



## STEP 9

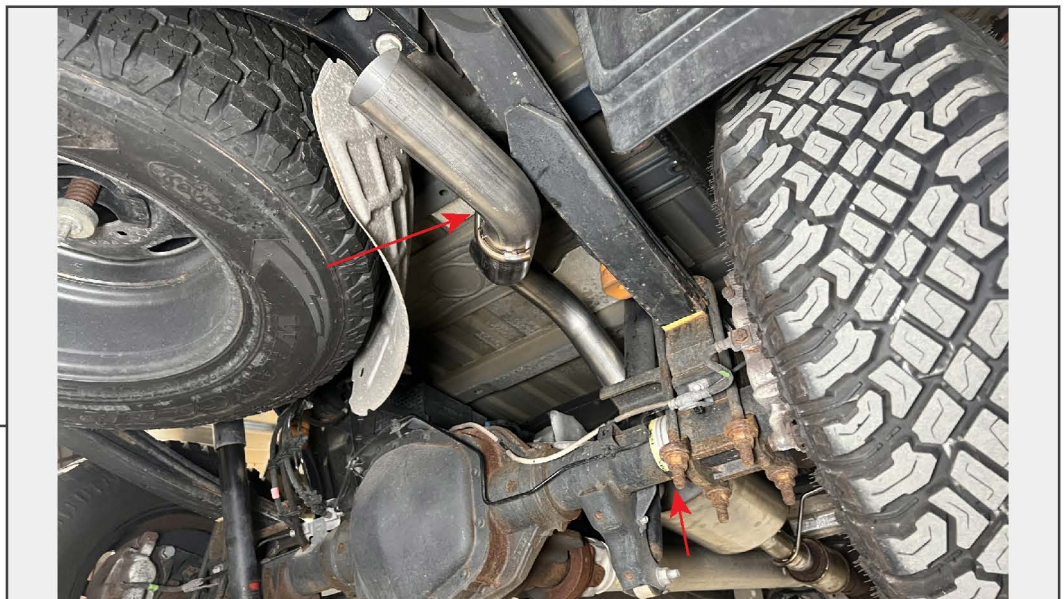


Fit the muffler onto the front pipe. Support the muffler into place with a floor jack. Loosely secure the muffler to the front pipe using the previously placed clamp.

Fit the (2) exhaust hanger clamps onto the outlet side of the muffler to prepare for the over-axle pipes. The hanger clamps will secure the rear pipes to the muffler.

Note: The hanger clamps fitted to the muffler outlets are side specific. When fitting the hanger clamps, the clamp nut will face outward on the vehicle, allowing to be easily tightened.

## STEP 10



Fit the RH over-axle pipe into the muffler, and then fit the pipe hangers into the vehicle rubber hangers. Loosely secure the RH over-axle pipe to the muffler using the previously placed clamp. Place (1) clamp on the end of the over-axle pipe to prepare for the exit pipes.

Note: The pipes may be very close or touching the vehicle leaf springs at this time. With the vehicle on the ground, the pipes will have clearance. Adjusting and fully tightening the exhaust will be done with the vehicle on the ground.





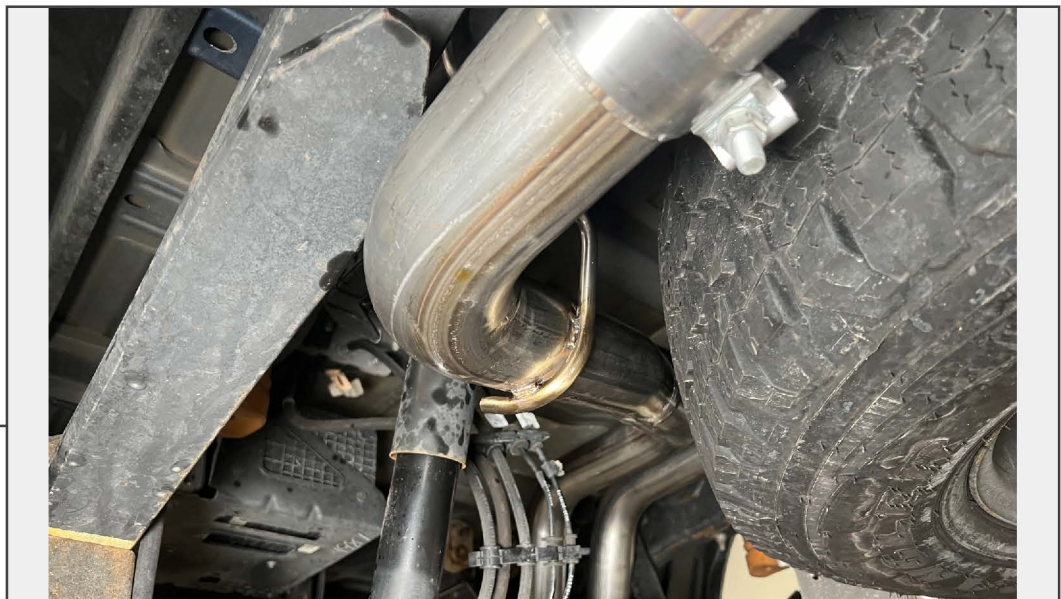
### STEP 11



Fit the LH over-axle pipe into the muffler, and then fit the pipe hanger into the vehicle rubber hanger above the muffler. Loosely secure the LH over-axle pipe to the muffler using the previously placed clamp.

Fit (1) exhaust clamp onto the end of the over-axle pipe to prepare for the LH rear pipe.

### STEP 12



Fit the LH rear pipe onto the RH over axle pipe, and loosely secure using the previously placed clamp. Using the included (1) rubber hanger, secure the LH rear pipe to the previously installed exhaust hanger bracket. Place (1) clamp on the end of the rear pipe to prepare for the exit pipes.

Note: The pipes may be very close or touching the vehicle leaf springs at this time. With the vehicle on the ground, the pipes will have clearance. Adjusting and fully tightening the exhaust will be done with the vehicle on the ground.



---

### STEP 13



Fit the exit pipe onto each side exhaust pipe, and loosely secure using the previously placed clamp on each side.

Place (1) exhaust clamp on the end of each exit pipe to prepare for the exhaust tips.

---

### STEP 14



Fit the exhaust tip onto the end of each exit pipe, and loosely secure using the previously placed clamp on each side.





## STEP 15

Lower the vehicle to the ground to allow the suspension to become loaded. Adjust the exhaust into the desired position, and tighten all exhaust clamps to secure the exhaust into place. Torque all clamps to 45 ft. lbs.

Installation is now complete.