



FORMED RUNNING BOARDS WITH INTEGRATED LED LIGHTS

(2015-2024+ F-150 SUPERCREW CAB)

(2017-2024+ F-250/F-350 SUPERCREW CAB)

INSTALLATION INSTRUCTIONS

CONTENTS

- (1) LH Running Board
- (1) RH Running Board
- (4) Center/Rear Brackets
- (6) Mounting Stud Plates
- (2) Front Brackets [LH & RH]
- (18) M8 Plastic Retainers
- (24) M8 Lock Nuts
- (24) M8 Flat Washers
- (12) M6 Nuts
- (12) M6 Lock Washers
- (12) M6 Flat Washers
- (6) M6 Double Stud Plates
- (1) LED Wiring Harness
- (4) Door Magnet Switches
- (8) Door Magnets w/ Die Cut 3M Tape
- (8) Alcohol Prep Pads
- (8) Adhesion Promoter Prep Pads

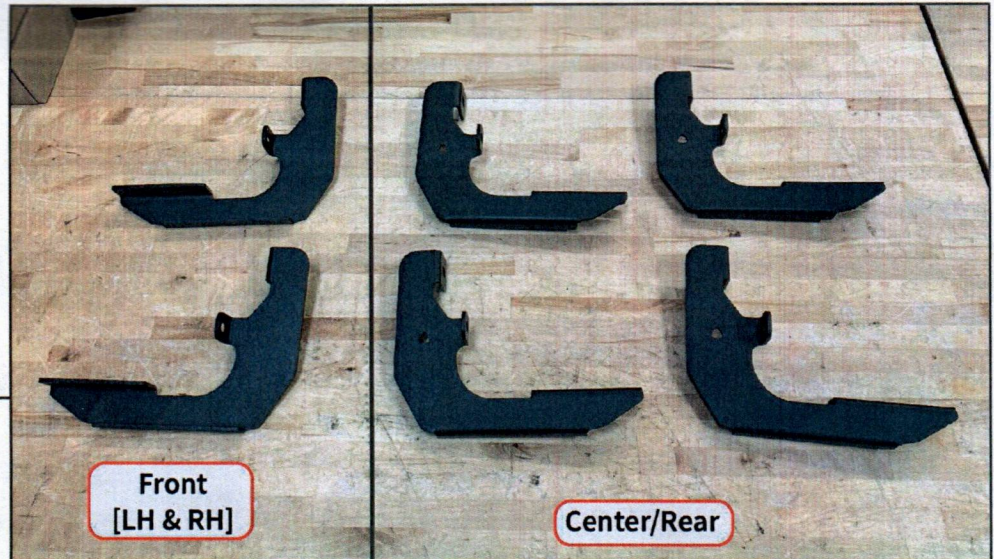
TOOLS REQUIRED

- 10mm, 13mm Socket/Wrench
- Ratchet
- Razor Knife

SKU # T627430
Edited: 06/12/2025

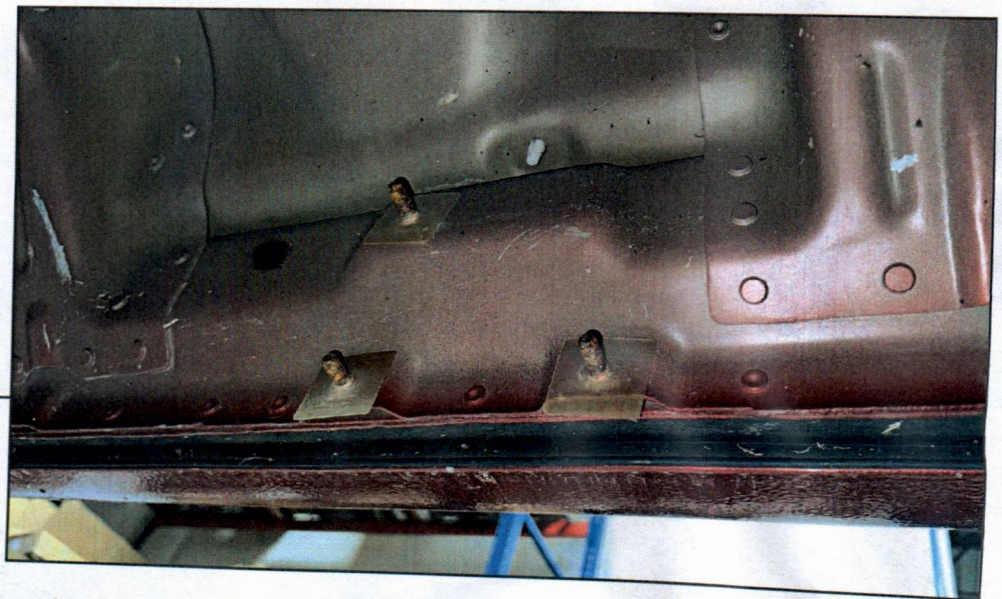
ARCADE

STEP 1



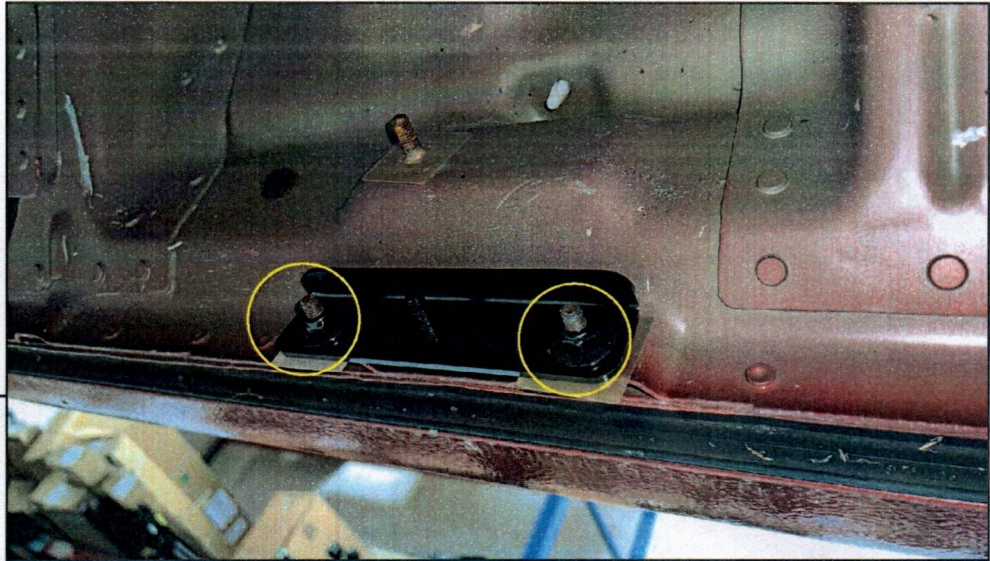
Identify the running board mounting brackets using the diagram above. The front mounting brackets are different from the center/rear brackets.

STEP 2



Locate the vehicle rocker panel studs. Install (1) plastic stud retainer to each rocker panel stud.

BARRICADE



STEP 3

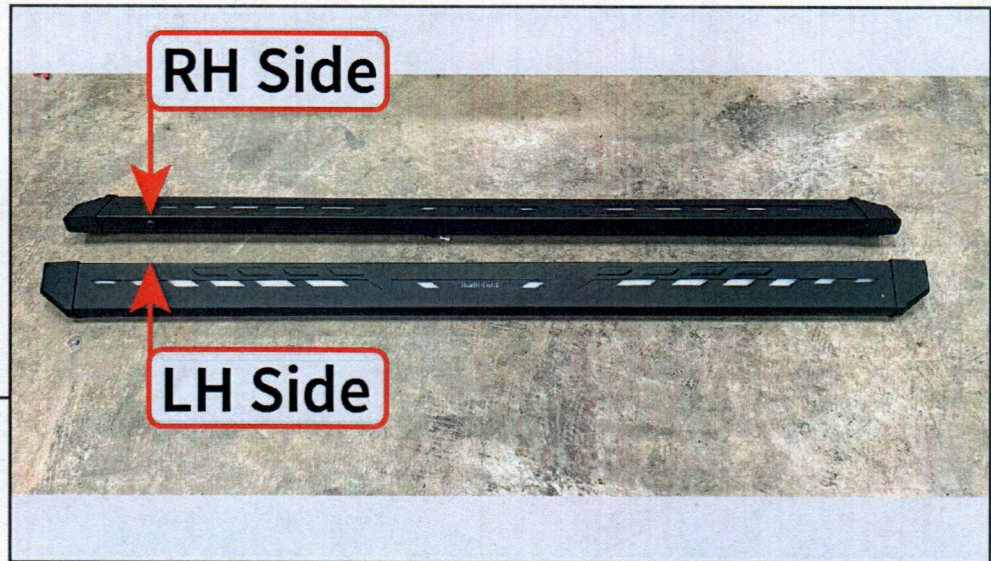
Place (3) plastic retainers onto the vehicle rocker panel studs. Install the appropriate mounting stud plates to the inner rocker panel studs using (2) M8 flat washers and (2) M8 lock nuts per stud plate.



STEP 4

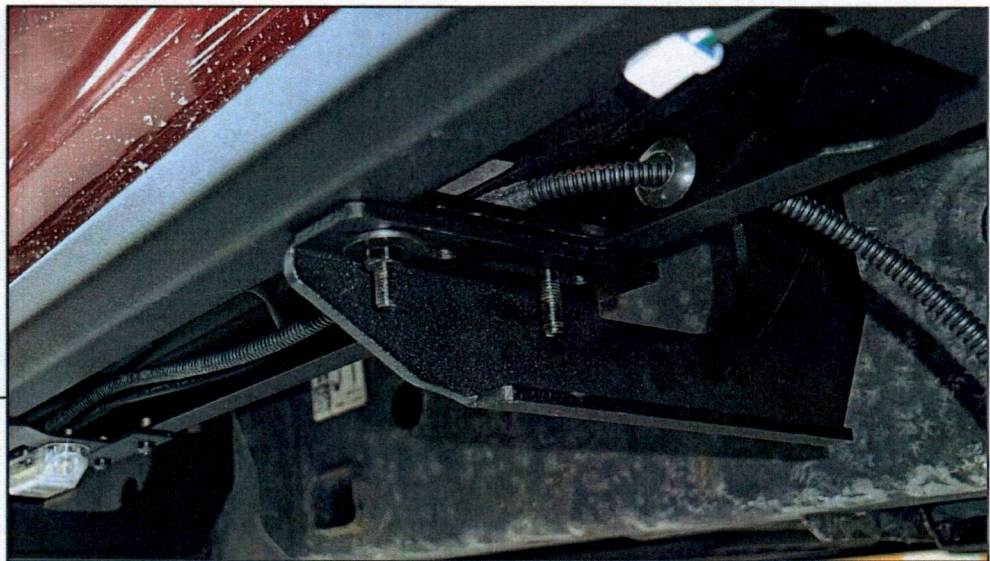
Install the appropriate outer mounting brackets to the inner rocker panel studs using (2) M8 flat washers and (2) M8 lock nuts per mounting bracket plate.

BARRICADE



STEP 5

Determine the LH and RH running boards by locating the wiring grommet along the inside edge of the running board. The grommet side of the running board will fit to the front of the vehicle when the running board is mounted to the vehicle.



STEP 6

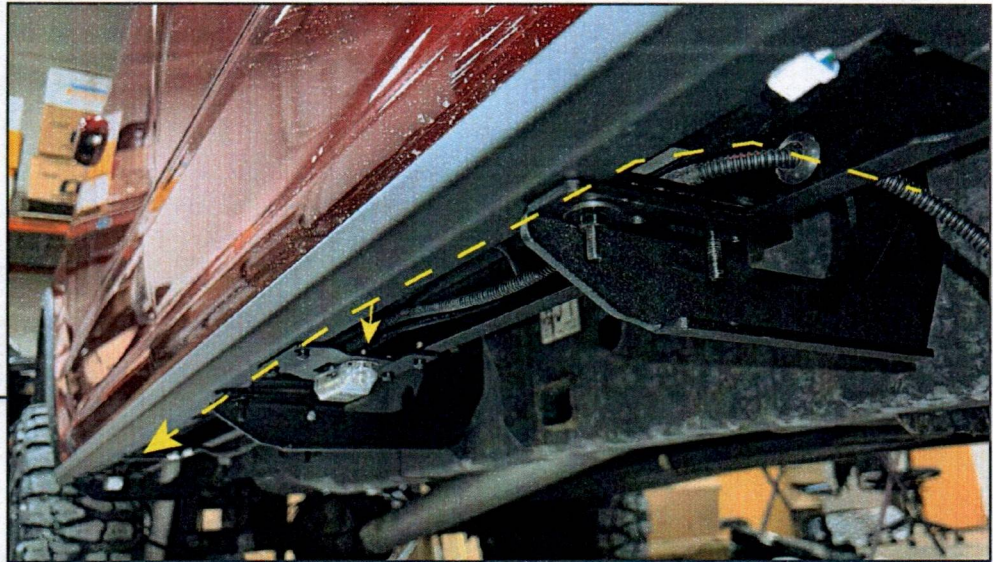
Fit the (3) M6 double stud plates into the running board. Then, fit the running board to the previously mounted brackets, ensuring the stud plates fit through the brackets.

Adjust the running board to best fit the vehicle, and secure into place using (6) M6 flat washers, (6) M6 lock washers, and (6) M6 nuts.

Repeat Steps 1-6 to install the remaining running board to the vehicle.

BARRICADE

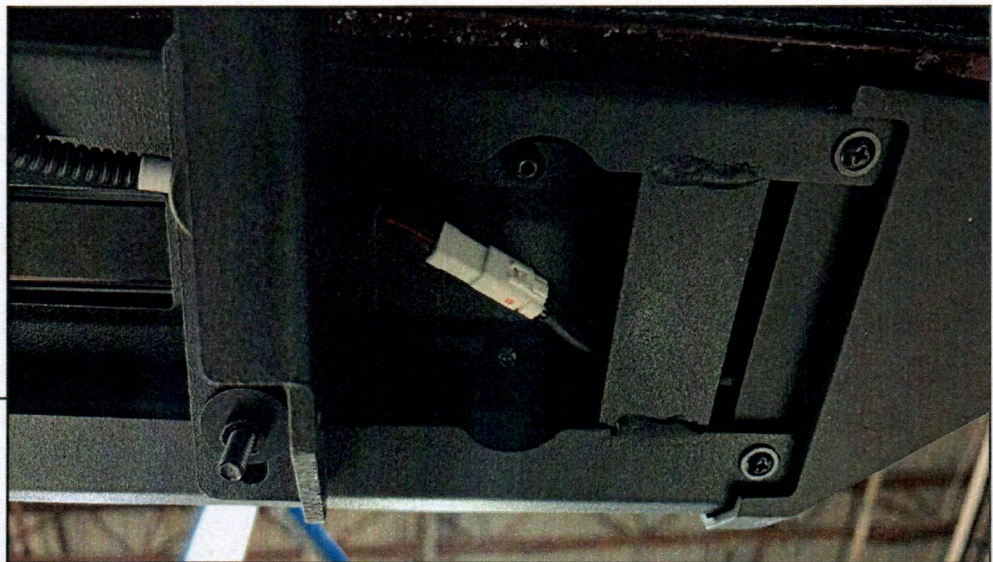
STEP 7



Lay out and identify each end of the wiring harness. Take note to the labels on each wire lead.

Beginning at the RH side of the vehicle, route the "Puddle Lamp" harness leads into the RH side running board through the grommet. Then, plug the harness leads into each puddle lamp.

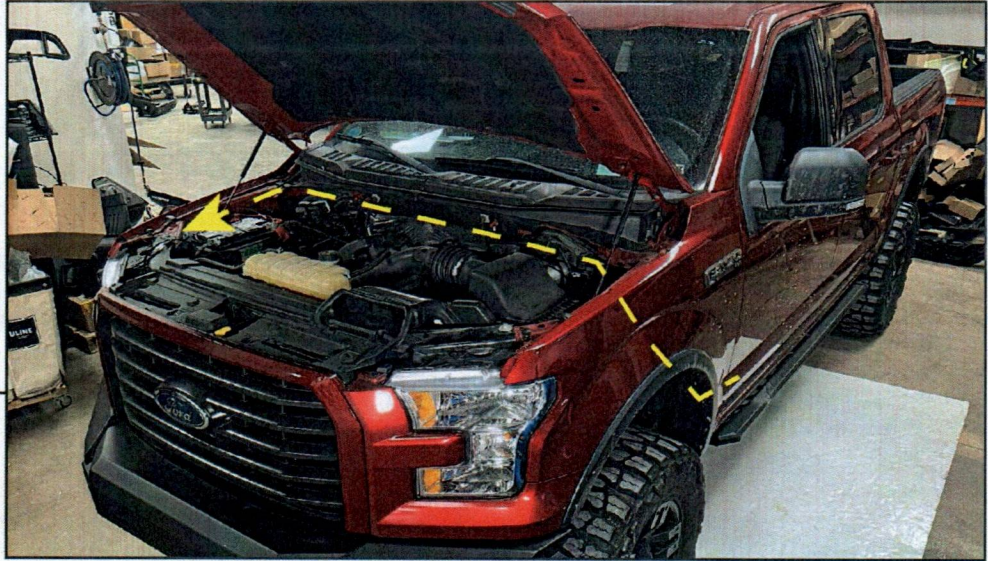
STEP 8



Route the wiring harness neatly under the vehicle (along transmission crossmember) and repeat this step for the LH side puddle lamps. Ensure the harness is away from hot/moving components.

Plug in the wire leads labeled "L-LED" and "R-LED" into the appropriate connector along the front of the running board.

BARRICADE



STEP 9

Neatly route the wiring harness from the LH side of the vehicle along the frame towards the engine bay. Then, neatly route the harness across the engine bay to the battery. Do not connect the battery terminals at this time.

Note: F-250/F-350 vehicles will need to neatly route the excess wiring in the engine bay due to battery location on the LH side of the vehicle.

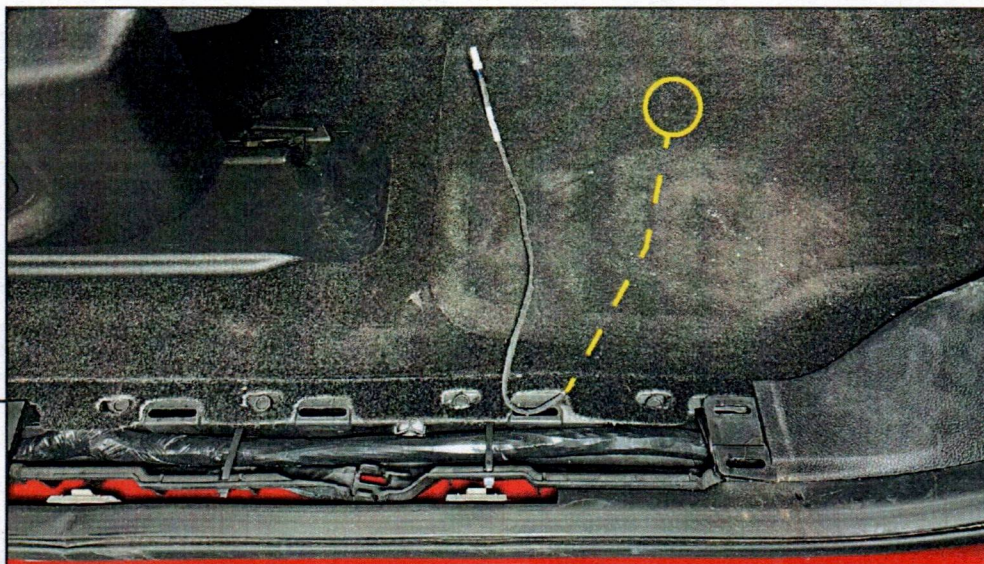


STEP 10

Locate the (1) rubber grommet under the vehicle front floorboard. Remove the grommet, and cut a small 'X' in the grommet to allow the door switch wiring leads to route into the vehicle interior.

BARRICADE

STEP 11



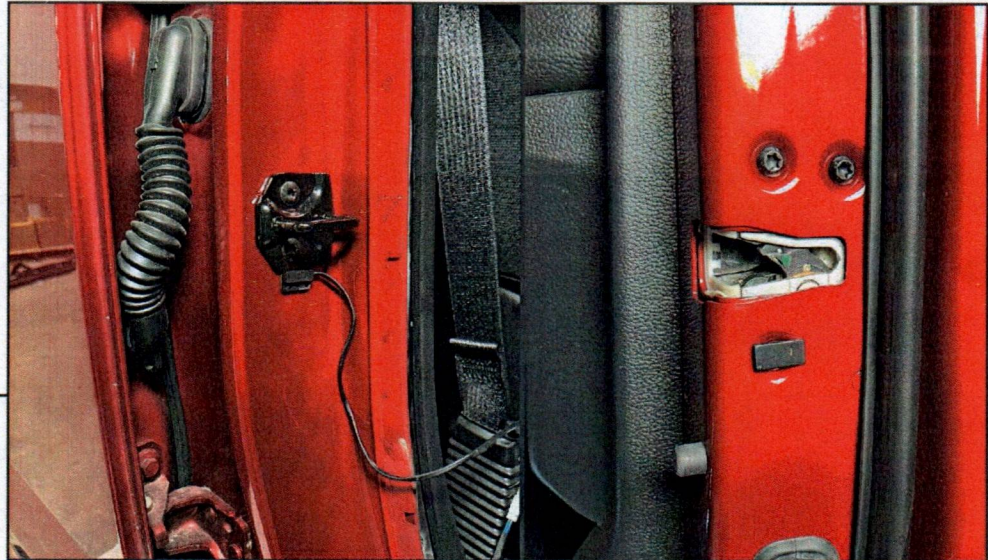
Firmly pull the door sill trim panel upwards to release the metal retaining clips, and set aside. Route the running board door switch wire leads through the grommet, and reach the leads by reaching under the vehicle carpet.

STEP 12



Lift the weatherseal around the door opening. Route the shorter wire lead in the harness upwards on the door opening towards the door striker.

BARRICADE



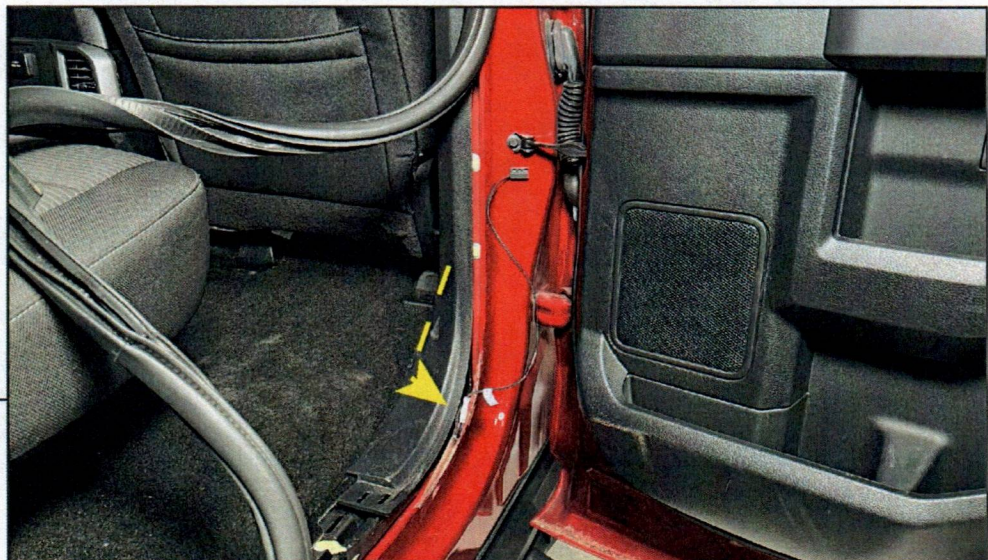
STEP 13 **[Front Door]**

Clean the vehicle door opening under the striker & the vehicle door under the latch assembly using (1) alcohol prep pad, and allow to fully dry.

Door Switch: Peel the tape backing, and adhere the switch to the door under the striker.

Magnet: Peel the tape backing, and adhere the magnet to the lower bolt on the door latch.

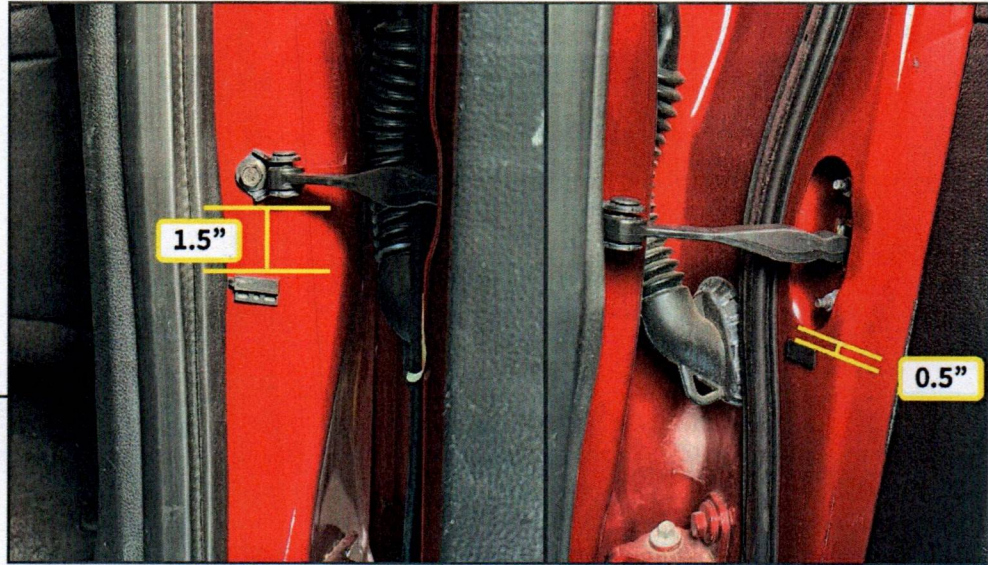
Plug in the door switch, and re-install the weatherseal and door sill trim to the door opening.



STEP 14 **[Rear Door]**

Route the remaining door switch lead under the vehicle B-Pillar trim towards the rear door. Then, remove the rear seat door sill trim and weatherseal.

BARRICADE



STEP 15 [Rear Door]

Clean the vehicle door opening & vehicle door under the door limiting bar using (1) alcohol prep pad, and allow to fully dry.

Door Switch: Peel the tape backing, and adhere the switch 1.5" under the door limiting bar.

Magnet: Peel the tape backing, and adhere the magnet 0.5" below the door limiting bar cutout.

Plug in the door switch, and re-install the weatherseal and door sill trim to the door opening.



STEP 16

Complete door switch wiring/routing on the opposite side of the vehicle. Connect the wire harness to the battery using the diagram above. Secure the harnesses under the running boards using the included cable ties (press the cable tie into the running board / vehicle holes).

Close all doors, then open each door one at a time to verify functionality. The lighting will only power on when a door is open. If the lighting does not power off with the doors closed, verify magnet and switch locations.

Installation is now complete.