

INSTALL INSTRUCTIONS FOR FAS-TOP TRAVELER



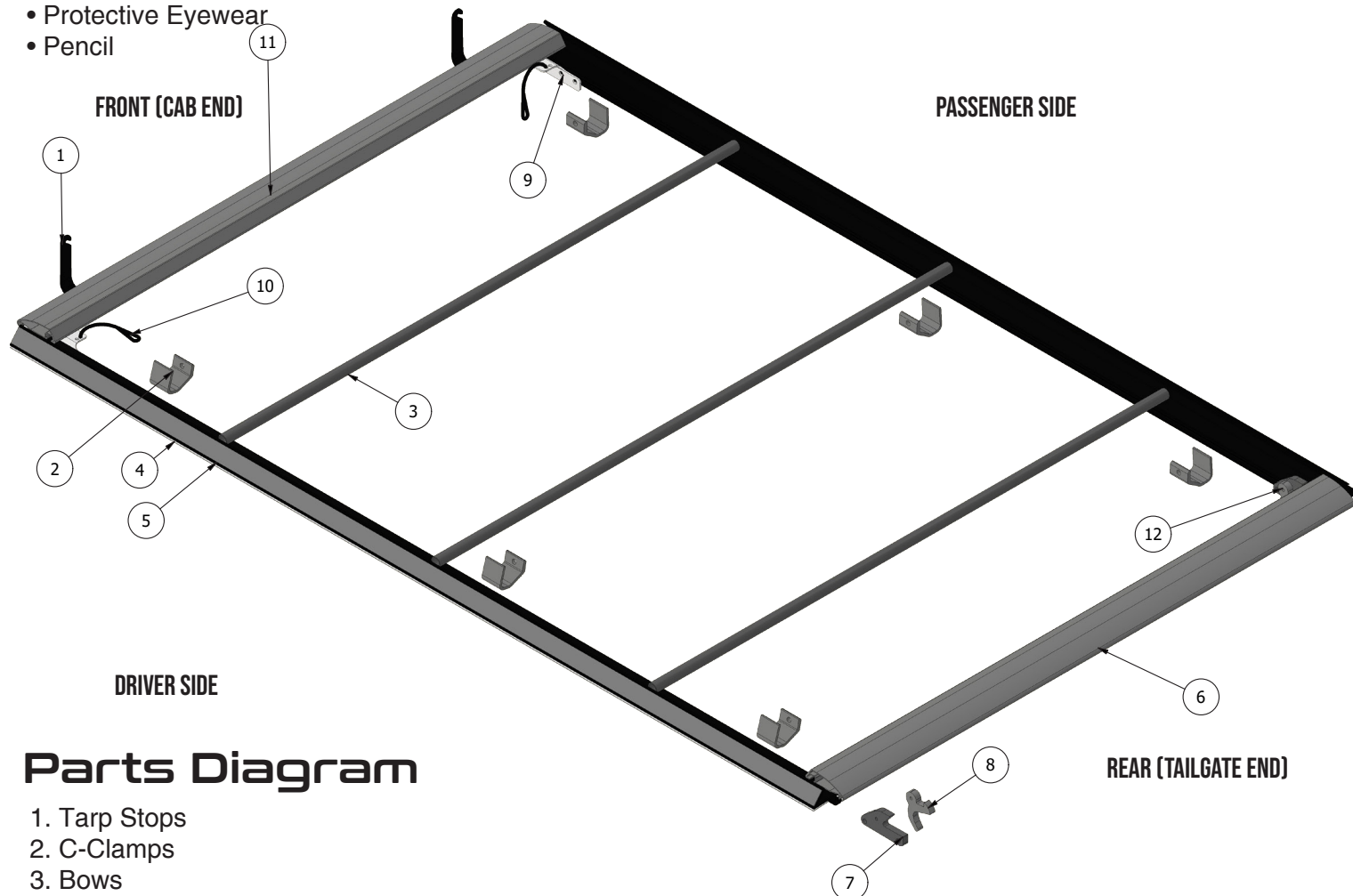
Questions? Call 701-673-3777

Components

- **Clamps** with mounting hardware (4ct. or 6ct.)
- **Driver Side Rail Assembly** with Pre-Installed Auto Latch Assembly, Header Bar Bracket, Storage Strap, and Weather Seal
- **Passenger Side Rail Assembly** with Pre-Installed Manual Latch Assembly, Header Bar Bracket, Storage Strap, and Weather Seal
- **Tonneau Cover Assembly** with Pre-Assembled Tarp Stops, Header Bar & Roll Bar

Tools Required

- 9/16" Wrench or Socket
- Tape Measure
- Protective Eyewear
- Pencil



Parts Diagram

1. Tarp Stops
2. C-Clamps
3. Bows
4. Weather Seal
5. Side Rail
6. Roll Bar
7. Strike
8. Trigger
9. Header Bar Bracket
10. Storage Strap
11. Header Bar
12. Manual Latch Assembly
- 7.& 8. Auto Latch Assembly

Mounting Side Rails

1

Set rail on top of truck bed side with the latch assembly toward the rear of the pickup. The rail with the (spring loaded) auto latch goes on the driver side. Push rail against the front inside edge of box.

↻ Repeat on both sides.



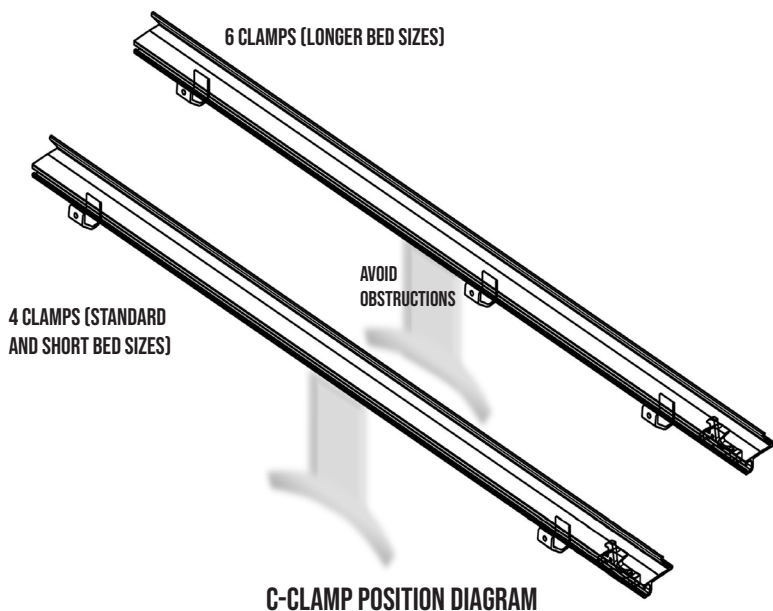
2

To install c-clamps, locate the square nuts that are pre-inserted in the rail channels.



3

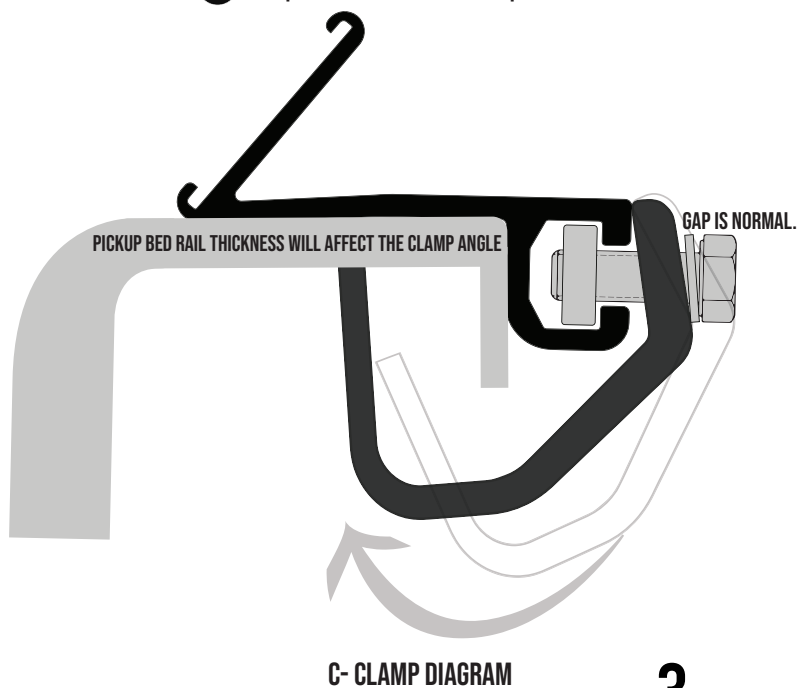
Position the c-clamps on the side rail as close to the front as possible and as close to the rear of the pickup as possible. Make sure to avoid obstructions.



4

Push side rail against inside edge of box before tightening c-clamps. Fasten clamps with $\frac{3}{8}$ " x 1" bolts and washers using a $\frac{9}{16}$ " wrench.

Repeat on all clamps.



Mounting Tonneau to Side Rails

1

Set tonneau cover assembly on front of box between side rails. Fold and tuck tarp flap under header bar.



2

To center tonneau, measure space on both sides of header bar, then reposition until space is equal on both sides.



3

Locate and align pre-inserted square nuts on the header bar with the hole on the header bar bracket.



4

Underneath header bar, fasten the header bar to the bracket with a 3/4" x 3/8" bolt and washer using a 9/16" wrench.

↻ Repeat on both sides of the header bar.



Closing Tonneau Cover

1

To close tonneau cover, unhook storage straps at the front of the box.



2

With tailgate down, unroll cover to the rear.



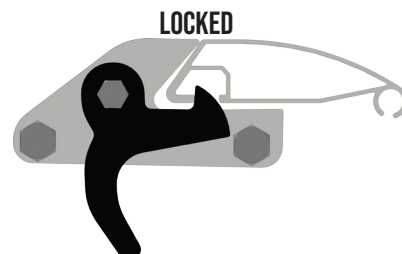
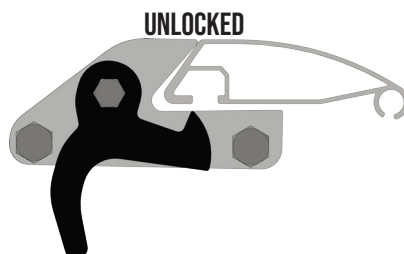
3

Position roll bar into strikes and press down roll bar until the spring loaded auto trigger latch engages.



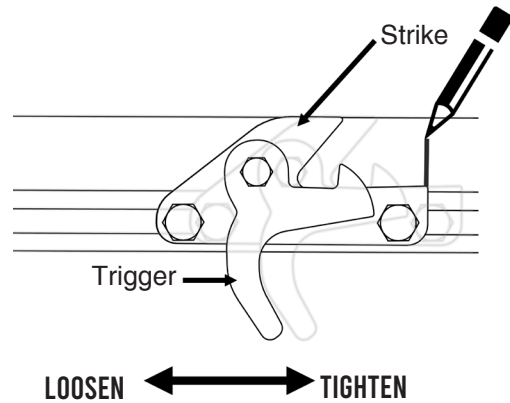
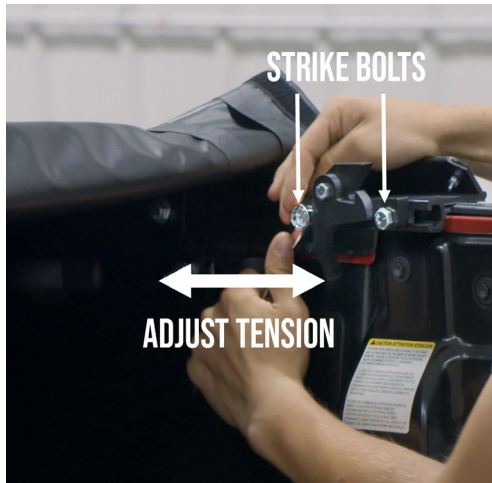
4

Driver side is automatic and passenger side is manual. Engage the manual trigger by pulling rearward into locked position.



5

If tonneau is too tight or too loose, the tonneau can be adjusted by repositioning the latch assemblies on the side rails. With a pencil, mark the original strike position for reference. With a 9/16" wrench, loosen the strike bolts. Move strikes forward in small increments to loosen tonneau tension or rearward to tighten tension. Retighten the strike bolts with wrench. Close cover again.



REAR (TAILGATE END)

6

To seal the sides, start by pulling the slack outward and pressing firmly down along the length of the side rails.



Opening Tonneau Cover

1

With tailgate down, disengage trigger latches by pushing trigger forward starting with the manual latch side (passenger side) first.



2

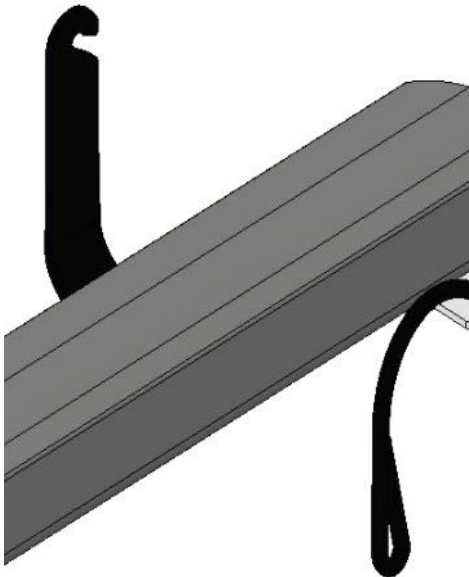
Disengage auto latch side (driver side) next by pressing the trigger forward with one hand and holding roll bar firmly with the other hand. Lift the roll bar open.



- 3** Using both hands, tightly roll cover forward to the front of the box against the tarp stops.



- 4** Secure the storage straps to the top of tarp stops.

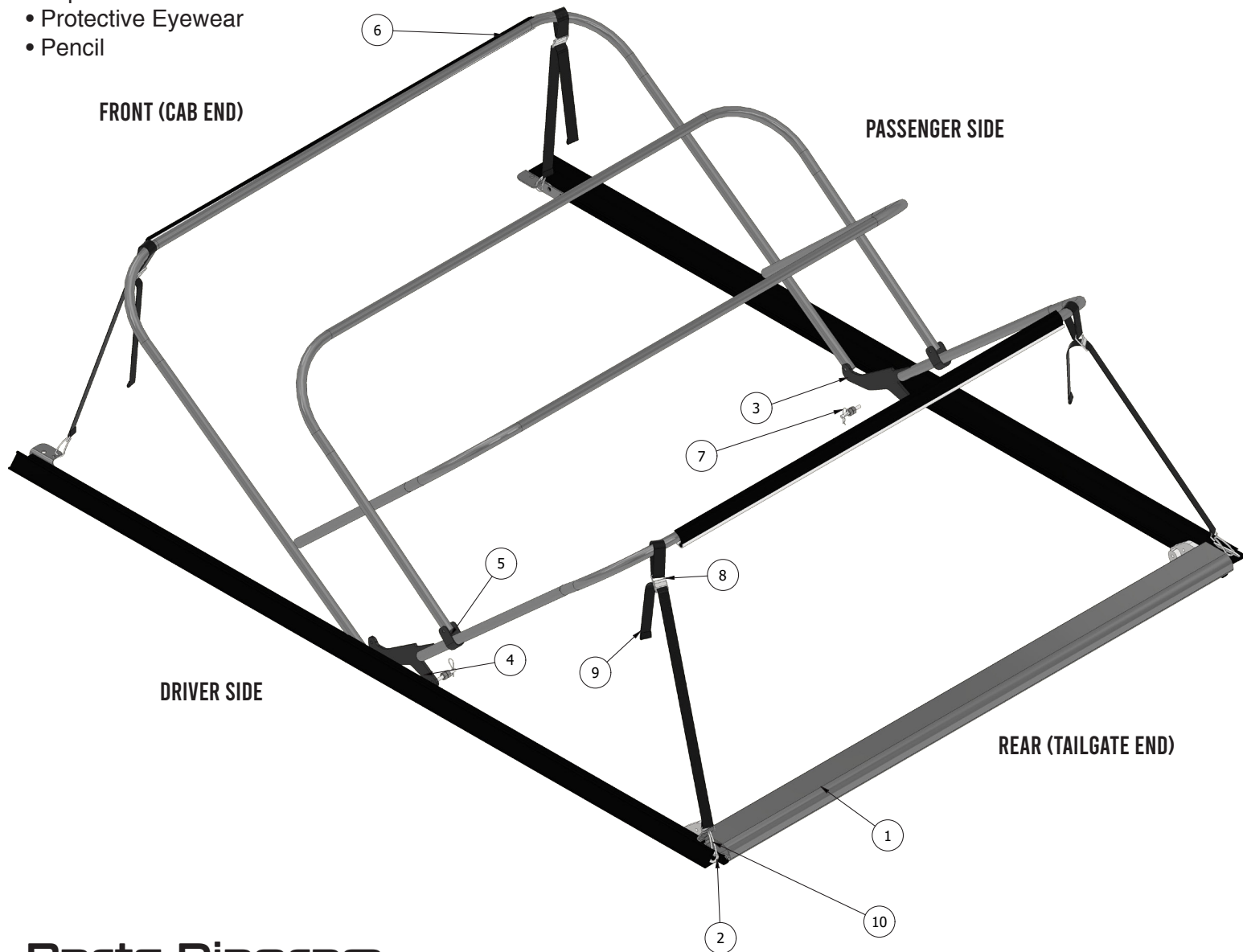


Components

- **Topper Assembly** with Pre-Installed roll bar, front bow, rear bow (4ct. or 6ct.)
- **2 x-Frame Assemblies**
- **2 Middle Bows**
- **Hardware Bag**
- **Sling**

Tools Required

- 9/16" Wrench or Socket
- Tape Measure
- Protective Eyewear
- Pencil



Parts Diagram

- | | |
|------------------------|--------------------------|
| 1. Roll Bar | 6. C-Track |
| 2. Corner Strap Anchor | 7. Pivot Hardware |
| 3. Swing Foot | 8. Cambuckle |
| 4. Swing Arm | 9. Tension Corner Straps |
| 5. Jawslide | 10. Clip |

Check before assembling the topper.

1

1. Make sure the aluminum bars with the screws are facing inward before assembling.
2. The Fas-Top logo will be located on the driver side panel towards rear.
3. The x-frame with the color coding is the passenger side.



Correctly installed

The aluminum bars with screws (front and rear) should face inward when the topper is installed. The fabric flap should wrap over the top of the bow.



Incorrect

If the top of the topper looks like this, reassemble the topper with aluminum bars facing inward to eliminate the extra spin in the bow.



Assembling Topper

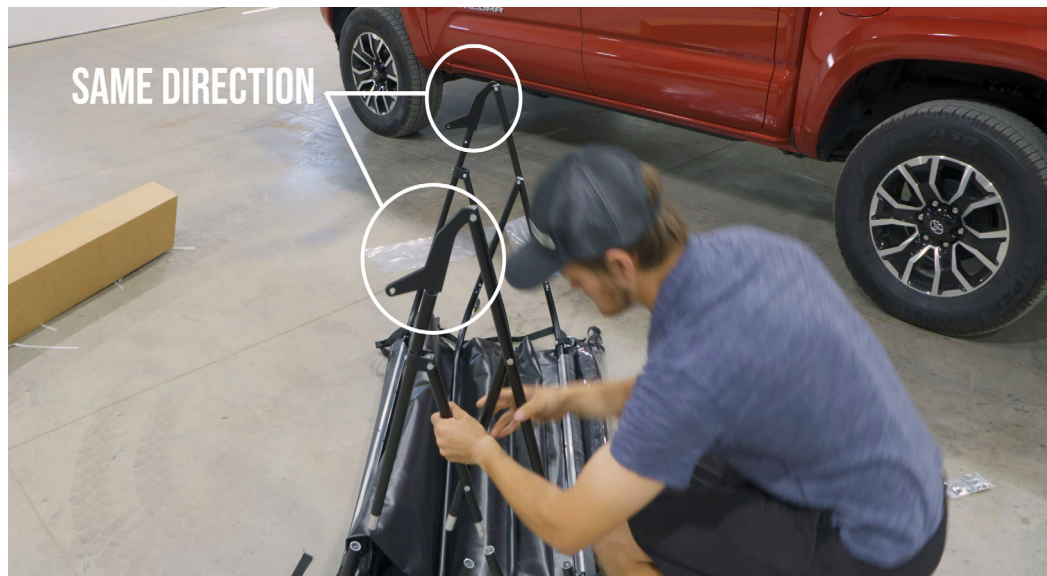
1

Start with passenger side and match colors. Press button and slide into place.



2

Next, do the driver side by mirroring the passenger side.



Mounting Topper

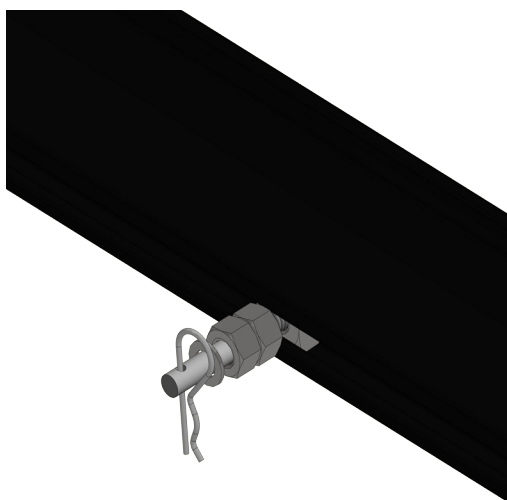
1

Locate the hardware bag. This is where you will find the pivot placement measurement and all topper mounting hardware. Measure on both sides.



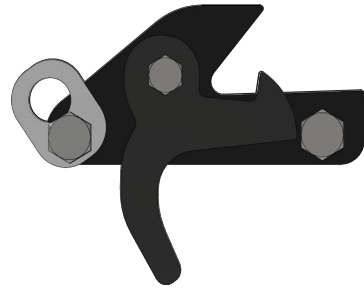
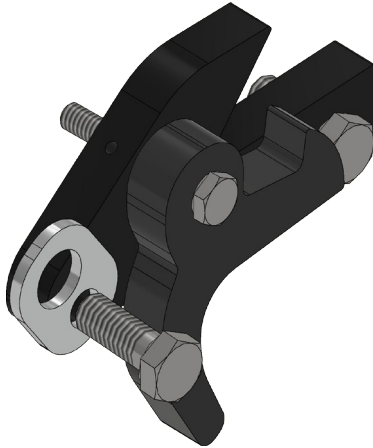
2

Place pivot and tighten with wrench.



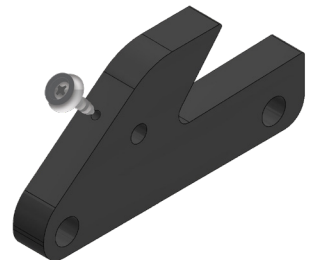
3

Remove pre-existing bolt on strike. Reinstall with anchor. ↻ Repeat on both sides.



4

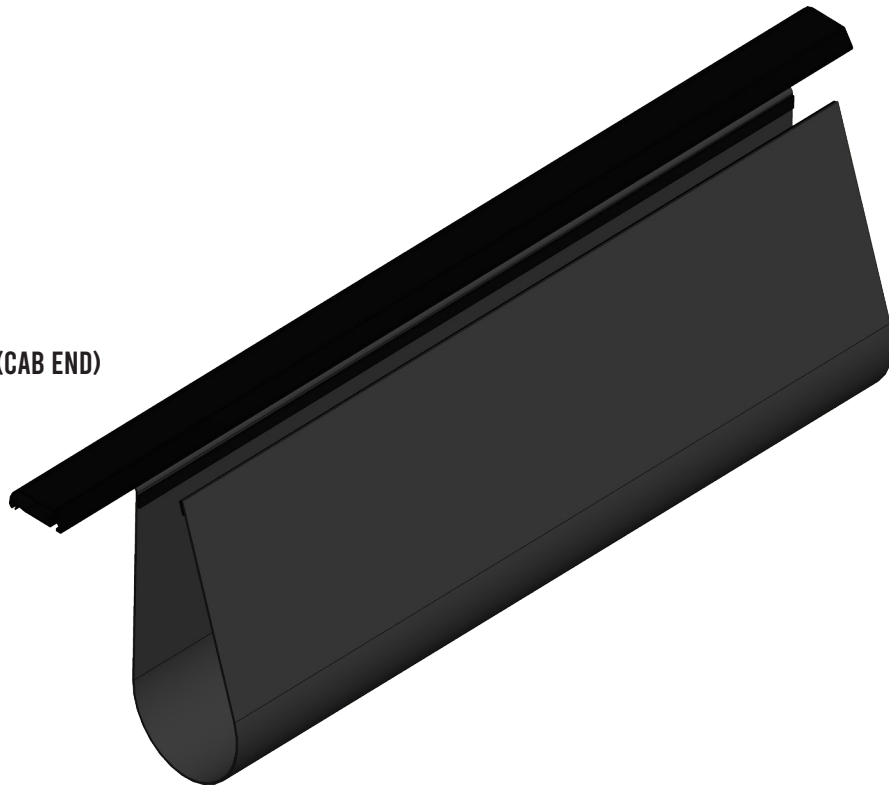
Screw zipper lock snap into pre-existing hole. ↻ Repeat on both sides.



5

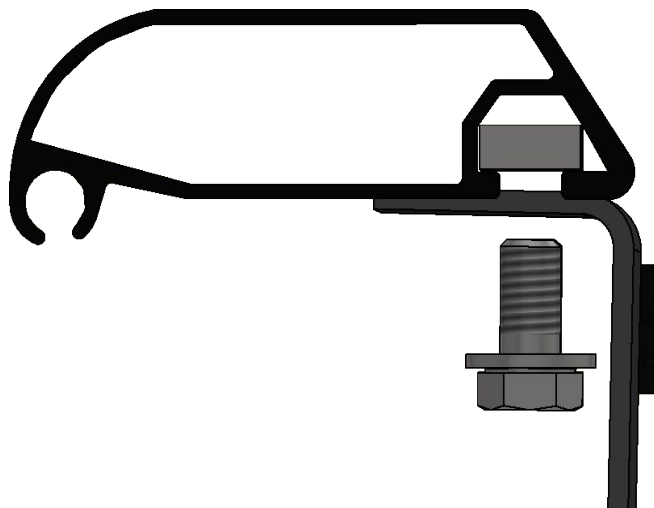
Center topper sling on header bar.

FRONT (CAB END)



6

Locate the pre-inserted 3/8" square nuts in the header bar channel. Mount sling to header bar with a 3/8" x 3/4" bolt through 3/8 flat washer, grommet (on sling) and pre-inserted 3/8" square nuts. Mount each side of sling.



7

To store the sling, roll sling up and velcro in place



8

Connect topper assembly to the side rails with the pivot hardware. Do both sides.



9

Set topper assembly on front of box between side rails. Seal window velcro onto the tonneau velcro flap.



10

Hook front corner straps to the header bar brackets.



Deploying Topper

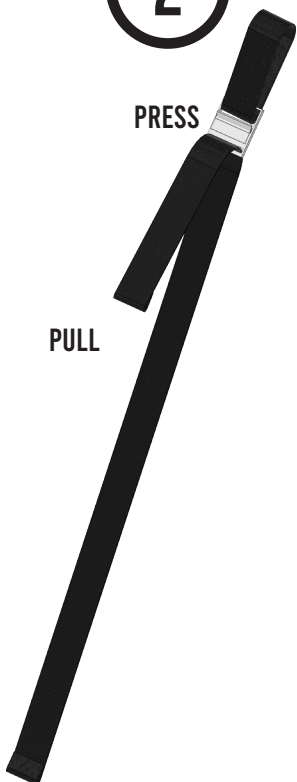
1

When lifting topper make sure to grab the bottom bow to avoid breaking hardware. Once you have lifted the topper up, deploy the x-frame.



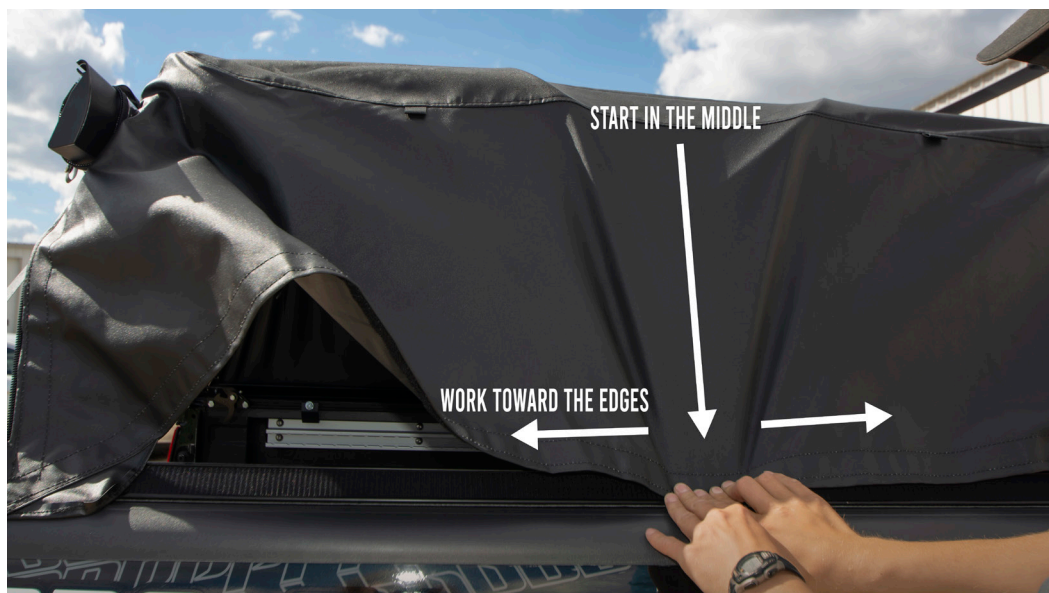
2

Hook rear corner straps into the strap anchors. The strap tension can be adjusted by pressing the release on the center of the metal buckle. The corner straps controls the height of each corner.



3

Stretch the slack by **starting in the middle sealing toward the outside edges**. For best results, you may need to adjust topper height (tighten or loosen corner straps).



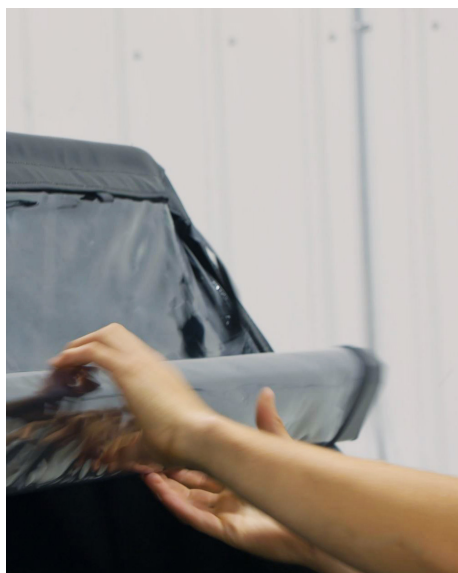
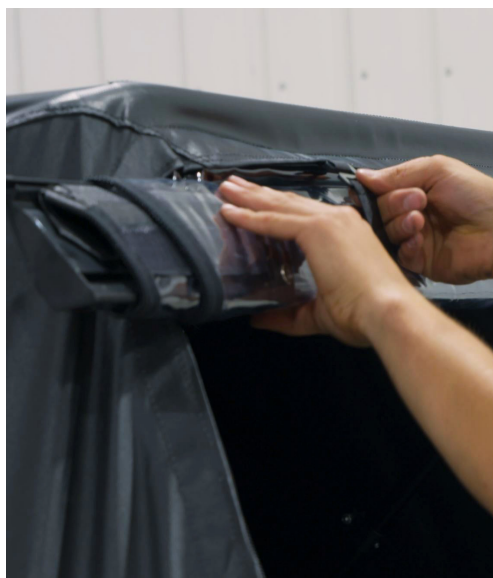
4

Finish sealing edges by pulling horizontally. Tuck velcro flap under tonneau bundle (cab end).



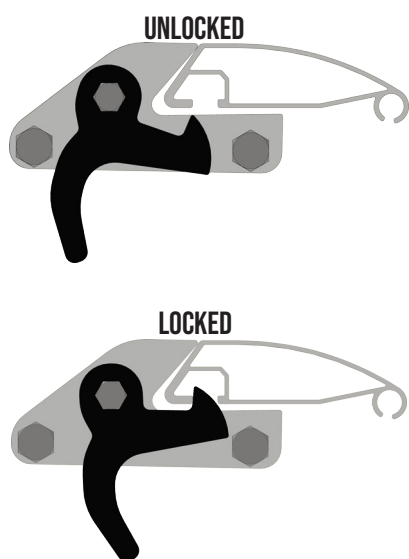
5

Unhook window g-hooks and unroll window



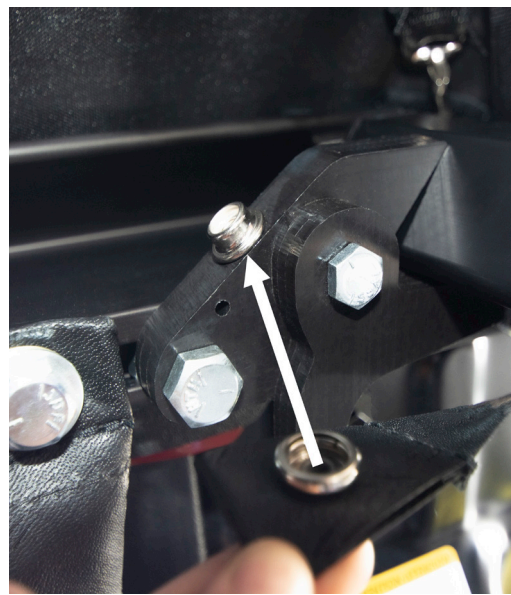
6

Press down to engage trigger latches.



7

Pull zippers down and snap to zipper lock.



8

Fold velcro flaps in on all four corners. Shut tailgate.



Stowing Topper in Sling

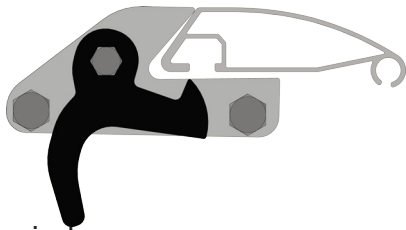
1. Unzip 4 corners



2. Fold side panels up.



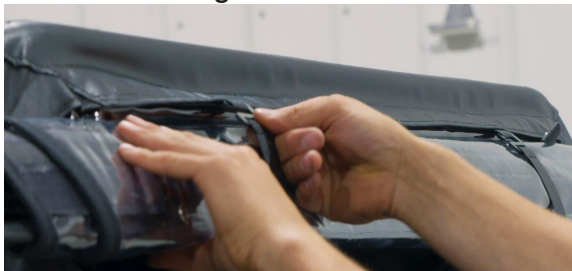
3. Unlatch roll bar



4. Roll window up.



5. Secure with g-hooks.



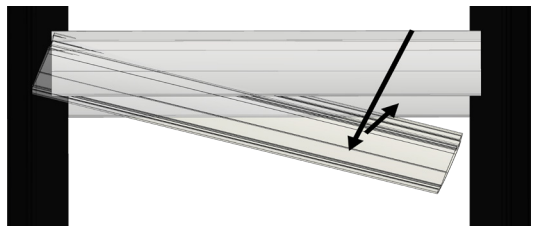
6. Unhook 4 corner straps.



6. Fold down.



6. Shim roll bar underneath side rails.



6. Press bundle down.



6. Seal velcro.



