



---

# HD MODULAR FRONT BUMPER

(2017-2022 F-250 / F-350)

---

## INSTALLATION INSTRUCTIONS

### CONTENTS

---

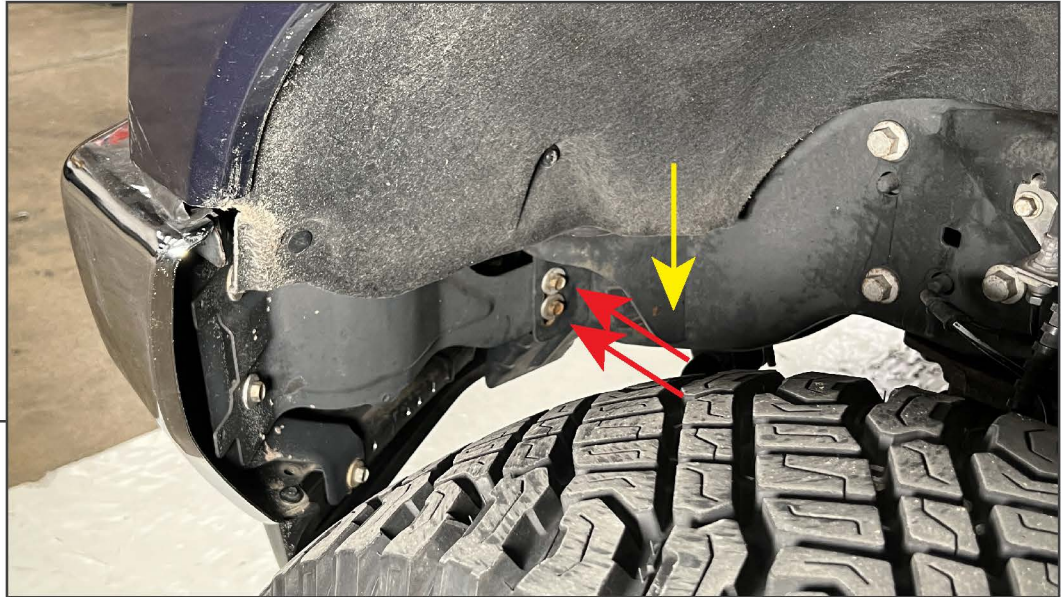
(1) Bumper	(36) M12 Flat Washers
(1) LH Mounting Bracket	(18) M12 Nuts
(1) RH Mounting Bracket	(4) M10x1.50 x 30mm Bolts
(1) Upper Filler Panel	(4) M10 Lock Washers
(2) LH/RH Mesh Panels	(4) M10 Flat Washers
(1) Center Mesh Panel	(4) M8x1.25 x 25mm Bolts
(1) LH LED Light Enclosure	(2) M8x1.25 x 16mm Bolts
(1) RH LED Light Enclosure	(6) M8 Lock Washers
(1) ACC Plastic Cover	(10) M8 Flat Washers
(1) ACC Square Bracket	(4) M8 Nuts
(1) ACC Mounting Bracket	(3) M6x1.00 x 30mm Allen Bolts
(1) LH Light Bar "L" Bracket	(4) M6x1.00 x 25mm Allen Bolts
(1) RH Light Bar "L" Bracket	(2) M6x1.00 x 20mm Allen Bolts
(1) License Plate Bracket	(18) M6x1.00 x 20mm Combo Allen Bolts
(2) License Plate Screw Retainers	(7) M6 Lock Washers
(1) LED Lights w/ Brackets & Harness Kit	(14) M6 Flat Washers
(8) M12x1.75 x 60mm Bolts	(7) M6 Nuts
(6) M12x1.75 x 40mm Bolts	(10) M6 Flange Nuts
(4) M12x1.75 x 45mm Bolts	(2) M6 Lock Nuts
(18) M12 Lock Washers	(1) 4mm Allen Key

### TOOLS REQUIRED

---

10-21mm Sockets/Ratchet  
Panel Removal Tool  
Razor Knife  
4mm Allen Key (Provided)

SKU # SD71780

**STEP 1**

If applicable, locate and unplug the front bumper harness from the inside of the vehicle frame on the driver's side of the vehicle.

From behind the bumper/through the wheel well, locate and remove (2) 15mm bolts on the outside of the front body mount going into the front bumper.

**STEP 2**

From the face of the bumper, remove (8) 18mm bolts. With a helper, pull away and lower the front bumper from the vehicle.

If equipped with Adaptive Cruise Control (ACC), place the bumper on a workable surface for disassembly at a later time.

**STEP 3**

Remove (4) 18mm bolts securing the front bumper mounting bracket to the vehicle frame.

Repeat this step on the opposite side of the vehicle.

**Note:** The bolts are installed through the bottom, and thread into welded nuts in the bracket.

**STEP 4**

Remove (4) 18mm nuts from the frame mounted bracket. Then, remove the brackets from the frame. Remove the nut plates from inside of the frame, if necessary.

**STEP 5**

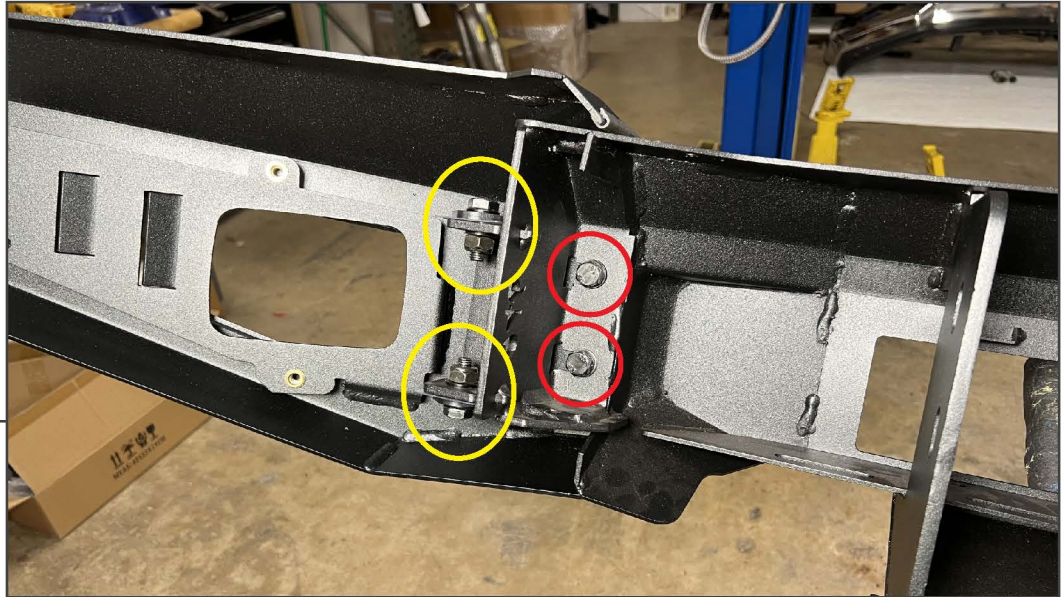
Loosely fit the included mounting brackets to the top of the vehicle frame using (4) M12x1.75 x 60mm bolts, (4) M12 lock washers, (8) M12 flat washers, and (4) M12 nuts.

Repeat this step for the opposite side of the vehicle.

**STEP 6**

Loosely fit the included mounting brackets to the inside of the vehicle frame using (2) M12x1.75 x 45mm stud plates, (2) M12 lock washers, (2) M12 flat washers, and (2) M12 nuts.

Repeat this step for the opposite side of the vehicle.

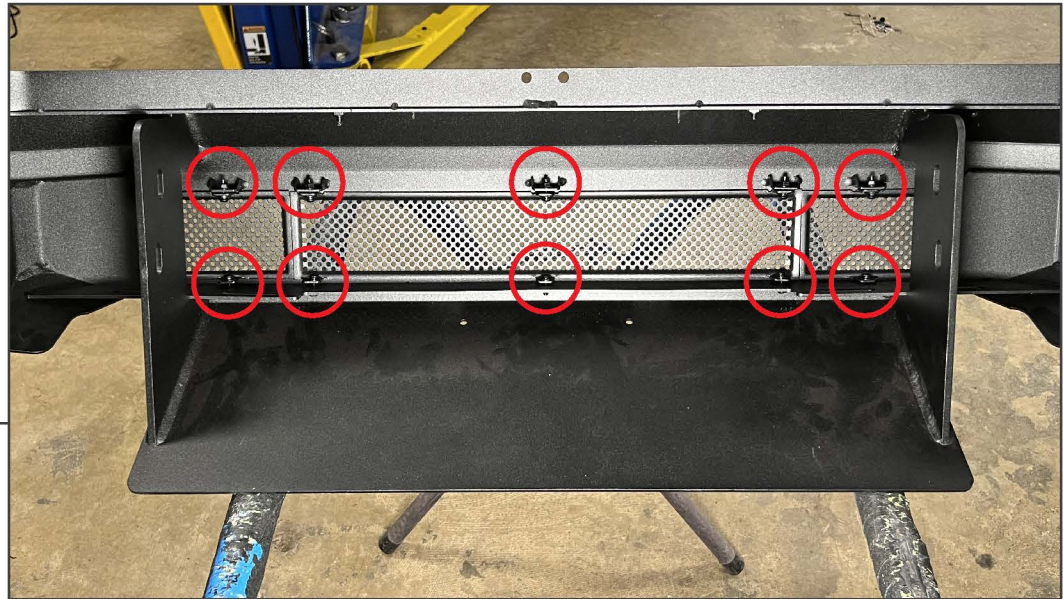
**STEP 7**

Place the bumper on a workable surface. Secure each end cap to the bumper using (2) M10 x 30mm bolts, (2) M10 lock washers, (2) M10 flat washers. Then, ensure the end cap hinging bolts are fully secure.

**STEP 8**

Secure the LH and RH LED light enclosures to the bumper using (2) M6 x 20mm combo Allen bolts into the threaded inserts pre-installed in the bumper end caps.

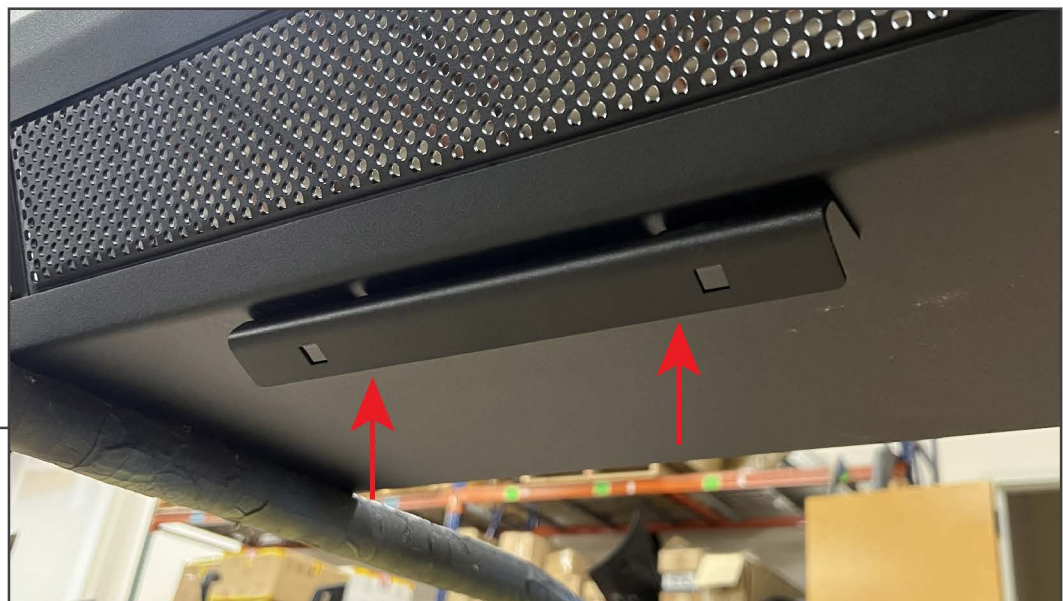
Assemble the LED light brackets to the LED lights using (2) M6 x 12mm cap Allen bolts and (2) M6 lock washers. Then, secure the included LED lights to each enclosure using (1) M8 x 25mm hex bolt, (1) M8 lock washer, (1) M8 flat washer, and (1) M8 nut included in the lighting kit.

**STEP 9**

Secure the LH, RH, and Center mesh panels to the bumper using (10) M6 x 20mm combo Allen bolts and (10) M6 flange nuts.

Note: Installing a light bar can be used instead of the grille panels using the included M8 hardware and “L” brackets. Light bar sold separately, SKU # T542547 [20”] OR T542548 [30”].

“L” Brackets: (2) M8 x 25mm Bolts, (2) M8 Lock Washers, (4) M8 Flat Washers, (2) M8 Nuts  
Light Bar to “L” Brackets: (2) M8 x 16mm Bolts, (2) M8 Lock Washers, (2) M8 Flat Washers

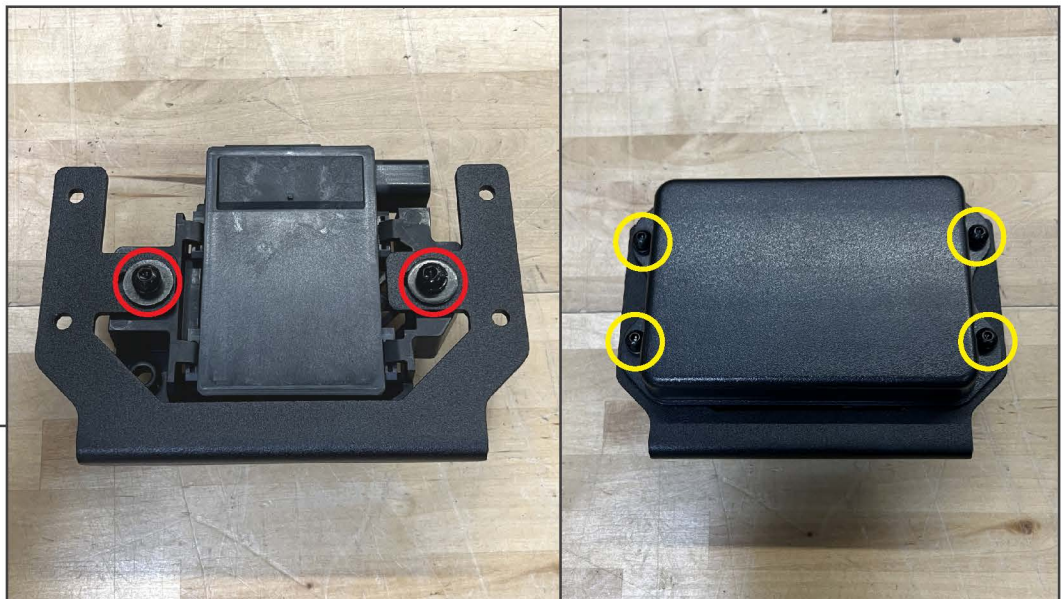
**STEP 10**

If desired, secure the front license plate mounting bracket to the bottom of the bumper using (2) M6 x 20mm Allen bolts, (4) M6 flat washers, and (2) M6 lock nuts. Then, fit the (2) square plastic screw retainers into the square holes in the bracket.

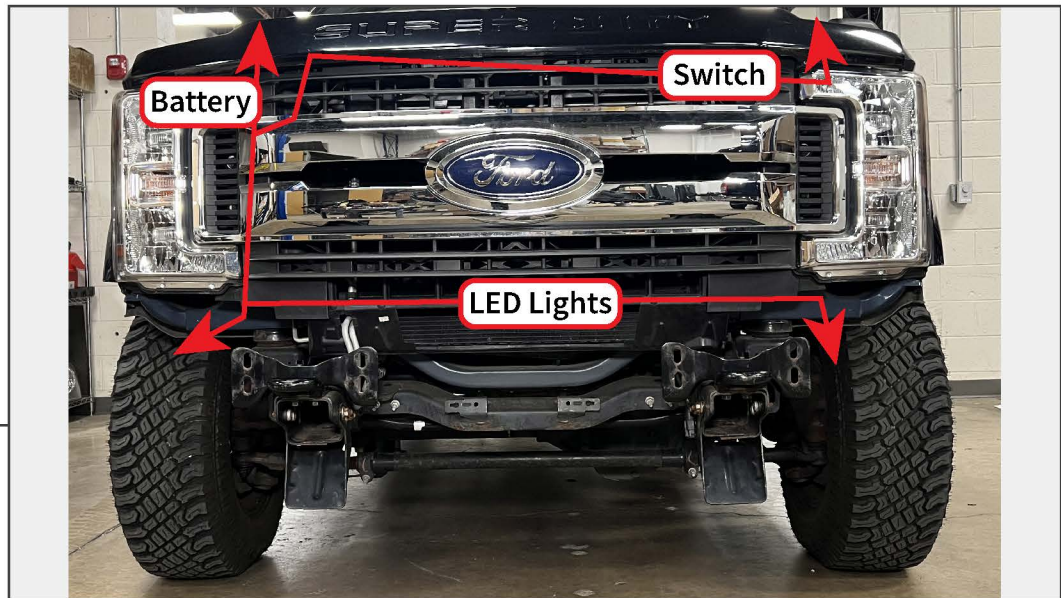
Use OEM license plate screws to secure the license plate to the bracket.

**STEP 11**

Mount the front filler plate to the bumper using (4) M6 x 20mm combo Allen bolts. The filler panel has welded nuts to utilize the M6 hardware.

**STEP 12**

- Secure the ACC module to the included ACC bracket using (3) M6 x 30mm Allen bolts, (3) M6 lock washers, (6) M6 flat washers, and (3) M6 nuts.
- Secure the included ACC module cover to the ACC bracket using (4) M6 x 25mm Allen bolts, (4) M6 flat washers, and (4) M6 nuts.
- Mount the assembly to the upper filler panel using (2) M8 x 25mm bolts, (2) M8 lock washers, (4) M8 flat washers, and (2) M8 nuts

**STEP 13**

Route the included LED light wiring harness throughout the engine bay following the diagram above. Ensure to route the harness away from any hot/moving components. Use the included (10) cable ties to ensure the harness is secure. Mount the relay to a suitable location in the vehicle engine bay.

Unplug the switch connector, and set the switch aside. Route the switch connector on the main harness towards the main firewall grommet below the brake master cylinder. Carefully cut a small slit in the grommet to allow for the switch connector to route into the vehicle interior.

**STEP 14**

With a helper, lift the new bumper to the vehicle, and secure into place using (6) M12 x 40mm bolts, (6) M12 lock washers, (12) M12 flat washers, and (6) M12 nuts.

Adjust the bumper to best fit the vehicle. Once adjusted, tighten all bumper mounting hardware until secure.

Installation is now complete.