



BRIGHT IS ONLY THE BEGINNING

# INSTALL GUIDE

## XRGB LED HEADLIGHTS: FORD SUPER DUTY (17-19)

LF777



WARNING: IT IS THE INSTALLERS RESPONSIBILITY TO CONFIRM COMPLIANCE WITH STATE AND LOCAL LAWS. BY READING THIS DOCUMENT, YOU AGREE IT IS ONLY TO BE USED AS AN EDUCATIONAL GUIDE. MORIMOTO LIGHTING NOR ITS DEALERS MAKE GUARANTEES ON ANY FINISHED RESULTS, NOR ARE THEY TO BE HELD RESPONSIBLE FOR ANY DAMAGE, MISUSE, OR PERSONAL INJURIES. IF YOU ARE UNABLE TO CLEARLY UNDERSTAND AND ADAPT THE INFORMATION BELOW, PROFESSIONAL INSTALLATION IS RECOMMENDED.

IMPORTANT: IF YOUR VEHICLE IS EQUIPPED WITH ANYTHING BUT MORIMOTO OR OEM TAIL LIGHTS, SIDE MARKERS OR OTHER OEM EXTERIOR LIGHTING; YOU MAY EXPERIENCE A HYPER FLASH AND/OR PROBLEM WITH THE SEQUENTIAL SIGNAL SETTING ON THESE HEADLIGHTS. THIS IS NOT A DEFECT IN THE HEADLIGHT, AND CAUSED BY UN-MATCHED IMPEDANCE WITH YOUR ORIGINAL VEHICLE SETTINGS.



# XRGB LED HEADLIGHTS: FORD SUPER DUTY (17-19)

TABLE OF CONTENTS	PAGE
DISASSEMBLY -----	3
WIRING -----	7
HEADLIGHT INSTALLATION -----	11
HEADLIGHT AIMING -----	12
RGB CONTROLLER PAIRING/OPERATION -----	13

## WHAT'S INCLUDED



**2X (PAIR) HEADLIGHT ASSEMBLIES**



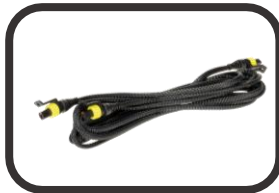
**2X HALOGEN ADAPTER HARNESSES**



**2X (PAIR) RGB CROSSOVER HARNESSES**



**1X FUSE TAP**



**1X DRL HARNESS**



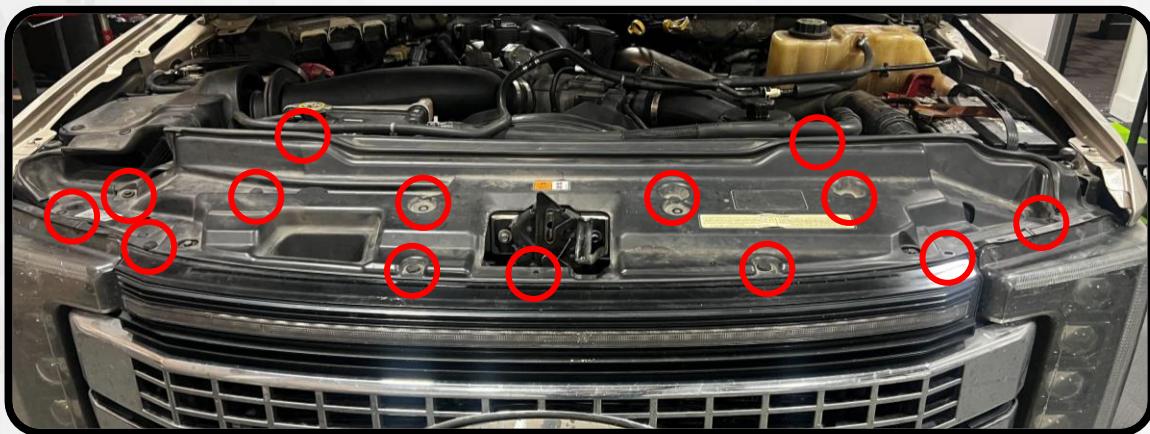
## REQUIRED TOOLS

- RATCHET
- 10MM SOCKET
- 13MM SOCKET
- PRY TOOL
- SPLIT TRIM REMOVAL TOOL
- PHILLIPS HEAD SCREWDRIVER

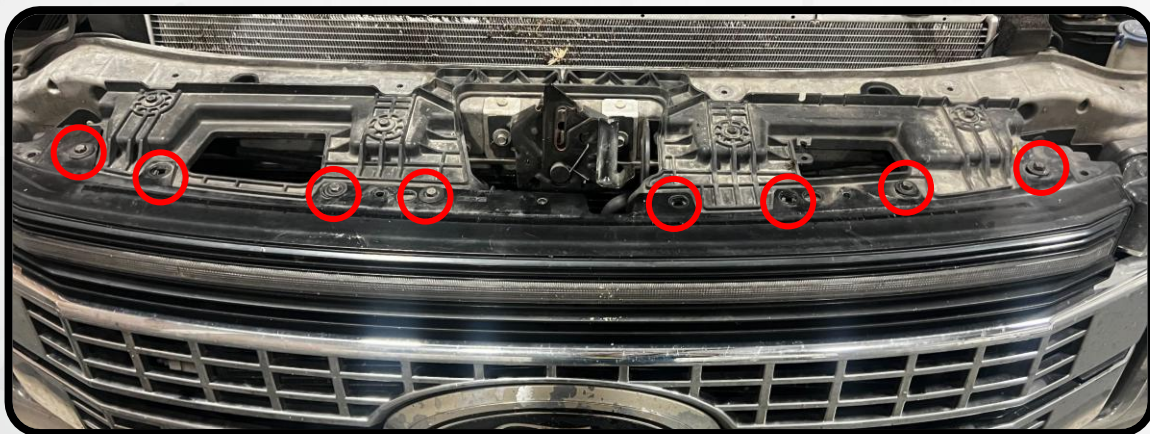


## DISASSEMBLY

1. REMOVE THE FOURTEEN PLASTIC PUSH-CLIPS HOLDING ON THE RADIATOR COVER. DO THIS BY PRYING UP ON THE TOP PART OF THE CLIP, THEN PRY THE LOWER PORTION UP OUT OF THE HOLE



2. REMOVE THE RADIATOR COVER AND SET IT ASIDE
3. REMOVE THE EIGHT 10MM BOLTS ALONG THE TOP OF THE GRILLE

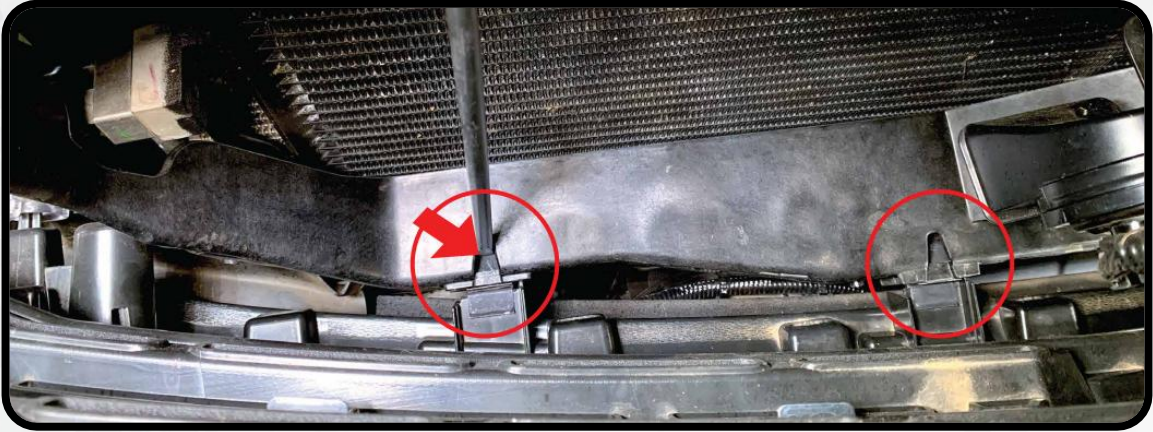


4. WITH THE BOLTS REMOVED, GENTLY, BUT DELIBERATELY, PULL THE TOP OF THE GRILLE FORWARD TO RELEASE THE CLIPS THAT HOLD IT, AND TILT IT FORWARD

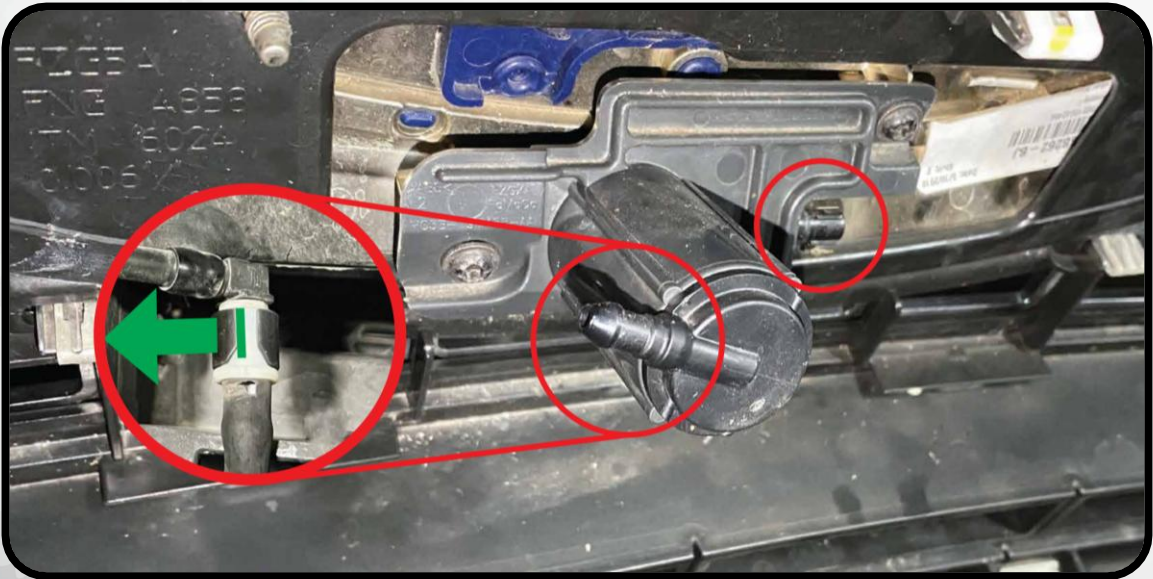


## DISASSEMBLY

5. WITH THE GRILLE TILTED FORWARD, GET A PRY TOOL AND PRESS DOWN ON THE FOUR METAL CLIPS (TWO PER SIDE) TO RELEASE THEM. AFTER RELEASING EACH CLIP, PULL THE GRILLE AWAY FROM THE TRUCK WITH LIGHT PRESSURE TO PREVENT THE CLIPS FOR LOCKING BACK INTO PLACE



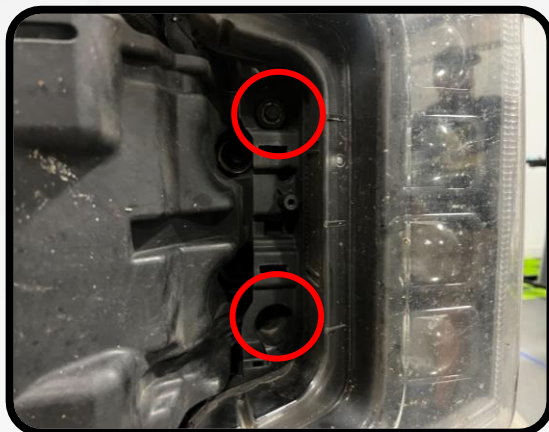
6. IF YOU HAVE A FRONT CAMERA, UNPLUG THE CONNECTOR ON THE CAMERA BY PRESSING THE RELEASE TAB AND SLIDING THE CONNECTOR OFF. THEN DISCONNECT THE WASHER FLUID HOSE FITTING BY PRYING UP ON ONE SIDE OF THE LOCKING COLLAR, THEN SLIDE THE HOSE FITTING OFF (A FEW DROPS OF WASHER FLUID MAY COME OUT). IF YOU DO NOT HAVE A FRONT CAMERA, SKIP THIS STEP



7. PULL THE GRILLE FORWARD AND REMOVE IT FROM THE TRUCK. SET IT ASIDE FOR NOW

## DISASSEMBLY

8. REMOVE THE ONE 10MM BOLT FROM THE TOP OF THE HEADLIGHT, AND THE TWO 10MM BOLTS FROM THE FRONT OF THE HEADLIGHT



9. REMOVE THE ONE 10MM BOLT ON THE LOWER CORNER OF THE HEADLIGHT. THIS BOLT IS LOCATED BEHIND THE RUBBER SEAL IN BETWEEN THE FENDER AND BUMPER

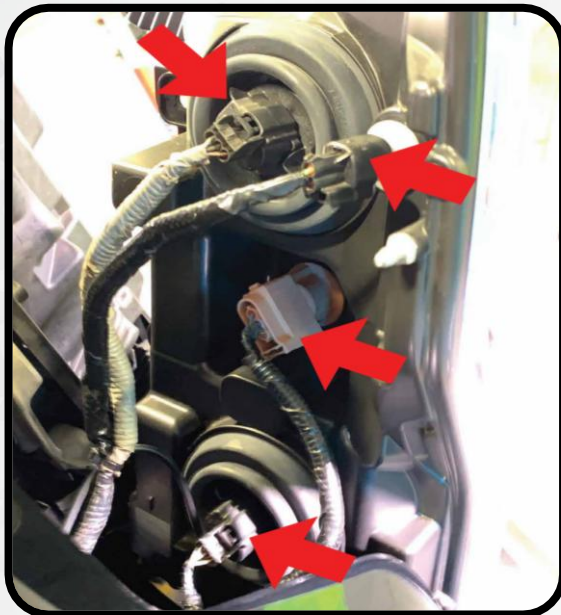


10. PULL THE HEADLIGHT FORWARD TO RELEASE IT FROM THE TRUCK. THESE HEADLIGHTS ARE LARGE, AND THE HEADLIGHT CAVITY IS TIGHT, SO IT WILL NEED TO BE TWISTED/ROTATED AS IT COMES FORWARD

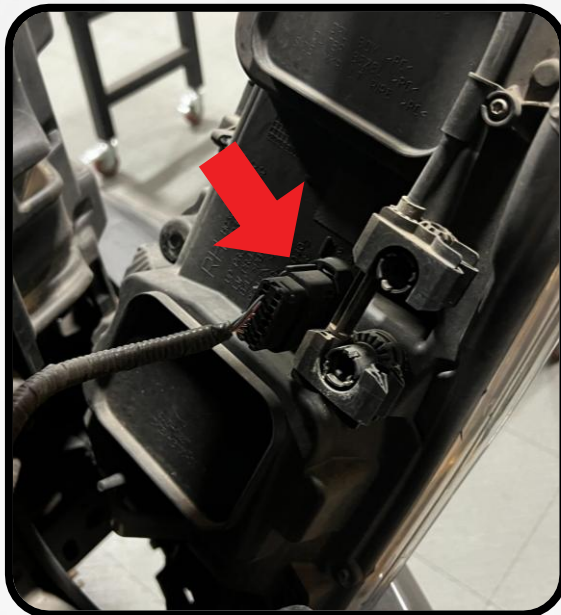


## DISASSEMBLY

11. LEAN THE HEADLIGHT FORWARD SO THAT YOU CAN ACCESS THE HEADLIGHT CONNECTORS. FOR HALOGEN TRUCKS, UNPLUG EACH OF THE FOUR CONNECTIONS INDICATED BELOW. LED TRUCKS WILL HAVE ONE SINGLE CONNECTOR



HALOGEN HEADLIGHT

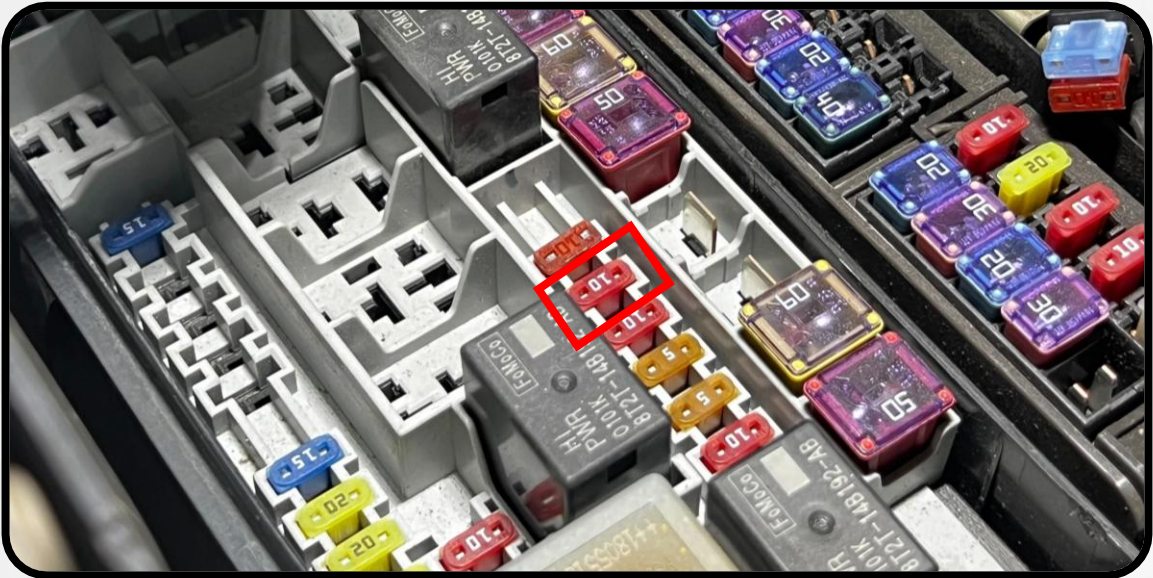


LED HEADLIGHT

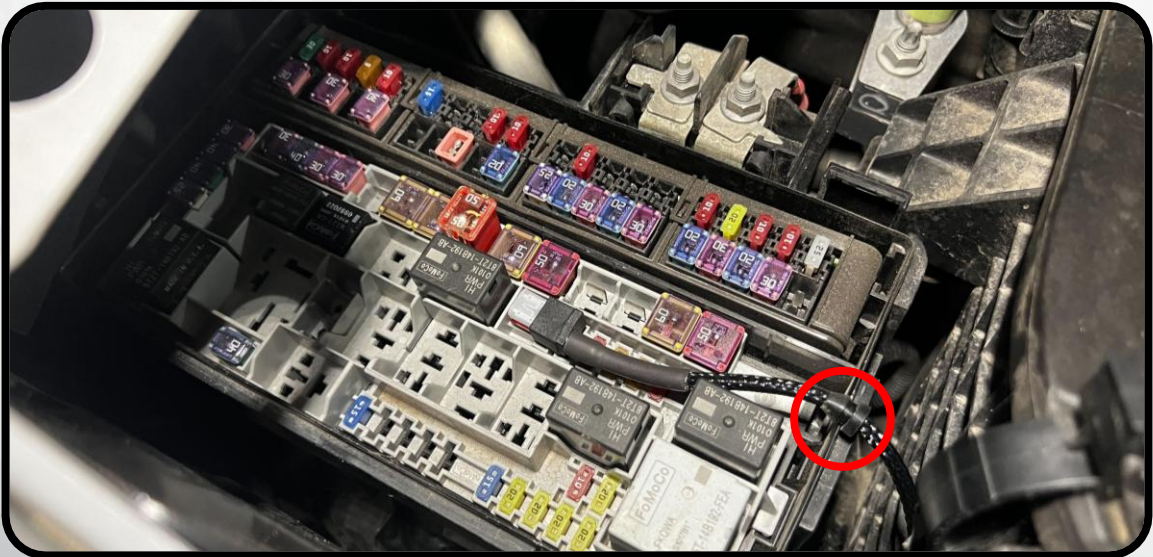
12. REMOVE THE HEADLIGHT FROM THE TRUCK AND SET IT ASIDE
13. REPEAT STEPS 8 THROUGH 12 ON THE OPPOSITE HEADLIGHT

# HEADLIGHT INSTALLATION

14. LOCATE THE FUSE BOX LOCATED UNDER THE HOOD ON THE PASSENGER SIDE BY THE FIREWALL. REMOVE THE 10A FUSE FROM SLOT #34, AND INSERT THE FUSE TAP INTO THAT SLOT



15. ROUTE THE HARNESS OUT OF THE FUSE BOX. USING A DRILL WITH A 5.5MM/7/32" DRILL BIT OR A SMALL CUTTING TOOL, MAKE A NOTCH IN THE SIDE WALL OF THE FUSE BOX LID SO THAT THE LID CAN CLOSE OVER THE GROMMET ON THE DRL FUSE TAP WIRE





# HEADLIGHT INSTALLATION

16. CONNECT ONE OF THE LONGER ENDS OF THE DRL HARNESS TO THE FUSE TAP



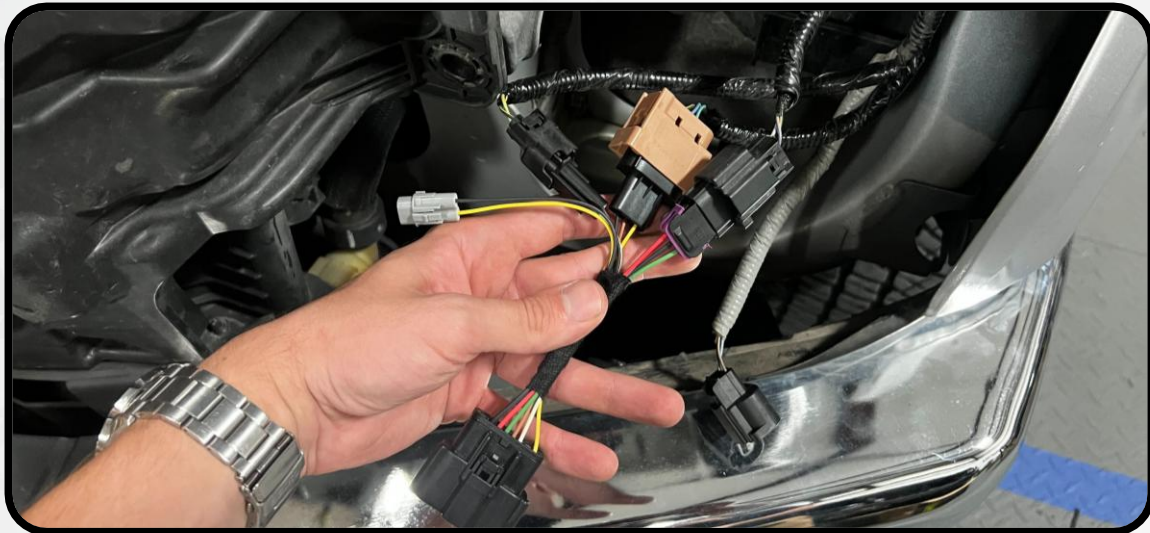
17. ROUTE THE SHORTER END OF THE DRL HARNESS FORWARD TO THE PASSENGER-SIDE HEADLIGHT CAVITY, AND THE LONGER END ACROSS THE RADIATOR SUPPORT TO THE DRIVER-SIDE HEADLIGHT CAVITY





# HEADLIGHT INSTALLATION

18. IF YOUR TRUCK WAS ORIGINALLY EQUIPPED WITH FACTORY HALOGEN HEADLIGHTS, INSTALL THE HALOGEN ADAPTER HARNESS ONTO THE SIDE MARKER CONNECTOR, TURN SIGNAL CONNECTOR, AND ONE OF THE LOW BEAM CONNECTORS, AS SHOWN BELOW, ON EACH SIDE OF THE TRUCK. IF YOUR TRUCK WAS ORIGINALLY EQUIPPED WITH FACTORY LED HEADLIGHTS, SKIP THIS STEP



19. ON EACH SIDE OF THE TRUCK, INSTALL ONE OF THE CROSSOVER HARNESSES
- FOR FACTORY LED TRUCKS, CONNECT IT DIRECTLY TO THE HEADLIGHT CONNECTOR
  - FOR HALOGEN TRUCKS, CONNECT IT TO THE HALOGEN ADAPTER HARNESS YOU JUST INSTALLED



## HEADLIGHT INSTALLATION

20. ROUTE THE LONG ENDS OF YOUR CROSSOVER HARNESSES ACROSS THE UPPER RADIATOR SUPPORT LIKE YOU DID WITH THE FUSE TAP HARNESS, AND CONNECT THE CROSSOVER HARNESSES TO EACH OTHER AS SHOWN BELOW



21. TUCK AND SECURE ALL EXCESS WIRING FROM THE DRL HARNESS AND CROSSOVER HARNESS. MAKE SURE THAT THE WIRES ARE OUT OF THE WAY OF ANY COMPONENTS THAT MOVE OR MAY GENERATE EXCESSIVE HEAT





## HEADLIGHT INSTALLATION

22. LIFT ONE OF THE NEW HEADLIGHT ASSEMBLIES UP TO THE HEADLIGHT CAVITY OF THE VEHICLE. CONNECT THE DRL HARNESS AND CROSSOVER HARNESS TO THE BACK OF THE HEADLIGHT HOUSING. IF YOUR TRUCK WAS ORIGINALLY EQUIPPED WITH FACTORY HALOGEN HEADLIGHTS, CONNECT THE SINGLE REMAINING GREY CONNECTOR ON THE HALOGEN ADAPTER HARNESS TO THE RESISTOR MOUNTED ON THE BACK OF THE HEADLIGHT



23. SLIDE THE HEADLIGHT ONTO THE VEHICLE, ENSURING THAT NONE OF THE WIRING IS PINCHED IN THE PROCESS. SECURE THE HEADLIGHT TO THE TRUCK USING THE FACTORY HARDWARE.
24. REPEAT STEPS 22 AND 23 ON THE OPPOSITE SIDE OF THE VEHICLE
25. TEST AND CONFIRM THAT ALL FUNCTIONS ARE WORKING PROPERLY

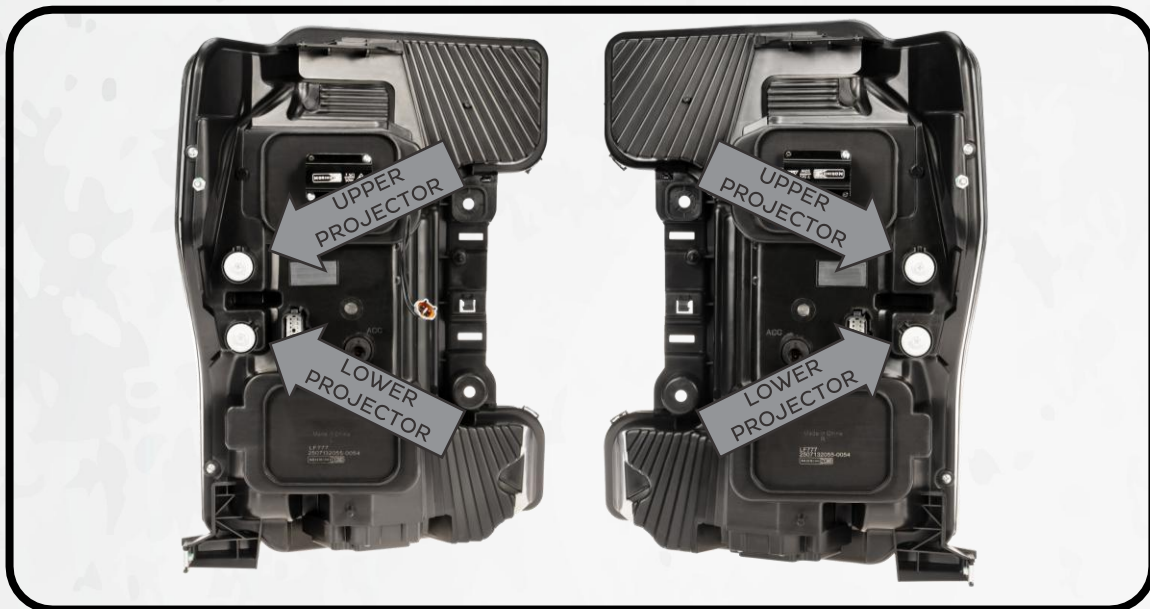
NOTE: WHILE AIMING THE HEADLIGHTS CAN BE DONE WITH THE HEADLIGHTS INSTALLED USING A LONG PHILLIPS HEAD SCREWDRIVER, REMOVING THE HEADLIGHTS TO ACCESS THE ADJUSTERS MAY BE EASIER IN SOME CASES. PROCEED TO PAGE 12 FOR AIMING INSTRUCTIONS

26. REASSEMBLE THE FRONT OF THE VEHICLE IN THE REVERSE ORDER OF DISASSEMBLY
27. REINSTALL THE RADIATOR COVER THE SAME WAY YOU REMOVED IT, SECURING THE FOURTEEN PLASTIC PUSH CLIPS

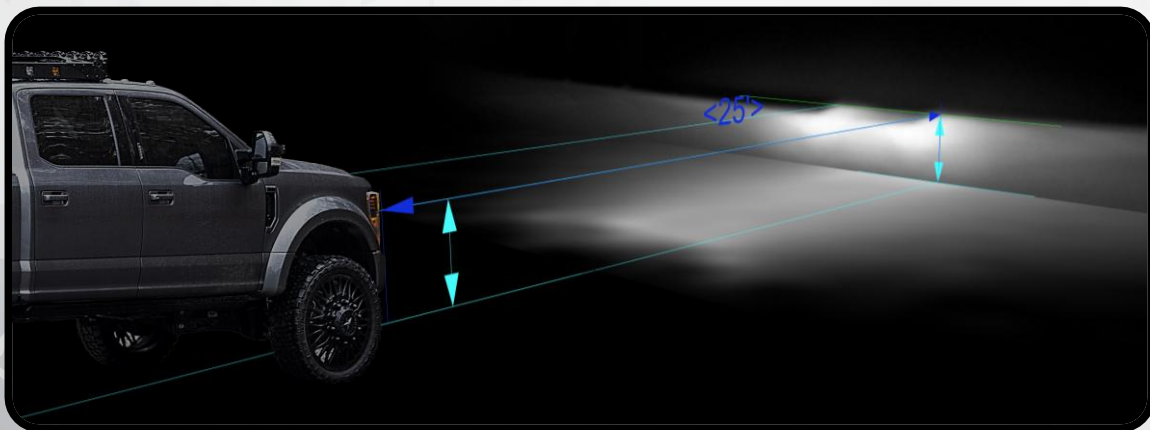


# HEADLIGHT AIMING INSTRUCTIONS

28. USE THE ADJUSTERS SHOW BELOW AND A PHILLIPS HEAD SCREWDRIVER TO ADJUST THE VERTICAL AIM OF THE HEADLIGHTS. THE ADJUSTERS CAN BE REACHED WITH THE HEADLIGHTS INSTALLED USING A LONG PHILLIPS HEAD SCREWDRIVER, BUT REMOVAL OF THE HEADLIGHTS CAN MAKE THE PROCESS EASIER



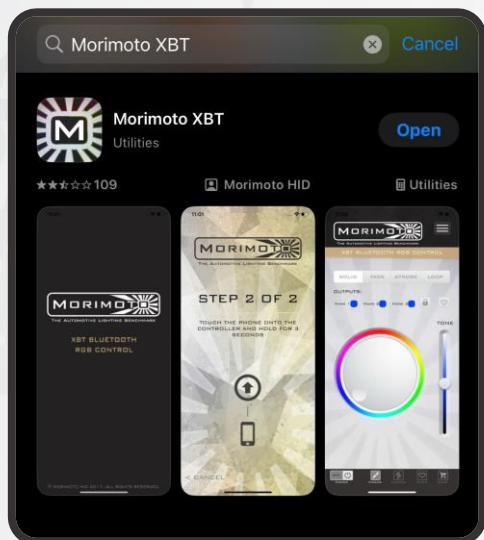
29. WITH THE VEHICLE PARKED ON LEVEL GROUND, 25' FROM A WALL, MEASURE THE DISTANCE FROM THE GROUND TO THE CENTER OF EACH PROJECTOR. FOLLOW THE INSTRUCTIONS BELOW TO PROPERLY ALIGN YOUR HEADLIGHTS' LOW BEAM CUTOFF (THE UPPER HORIZONTAL EDGE OF THE LOW BEAM). REPEAT THIS PROCESS FOR EACH PROJECTOR
- IF THE DISTANCE FROM THE GROUND TO THE OPTICAL CENTER IS LESS THAN 34.5", ADJUST THE TOP OF THE HEADLIGHT CUTOFF TO THE SAME HEIGHT AS THE HEADLIGHT MEASUREMENT YOU TOOK
  - IF THE HEIGHT IS BETWEEN 35"-39", ADJUST THE CUTOFF TO 2" BELOW YOUR HEADLIGHT MEASUREMENT
  - IF THE HEIGHT IS GREATER THAN 39.5", ADJUST THE CUTOFF TO 3" BELOW YOUR HEADLIGHT MEASUREMENT



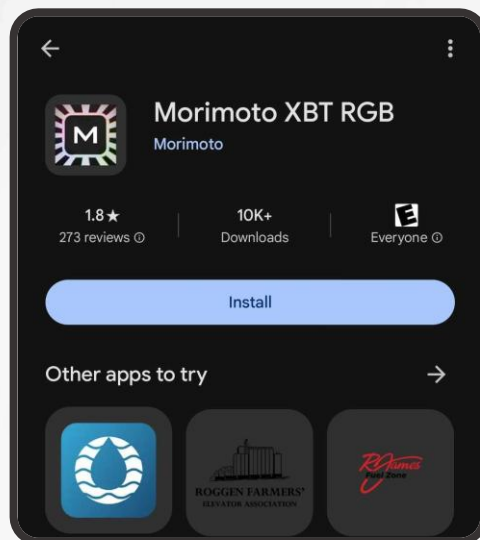


# RGB CONTROLLER PAIRING/OPERATION

30. THE RGB DAYTIME RUNNING LIGHT IS CONTROLLED VIA AN APP ON YOUR SMARTPHONE.  
DOWNLOAD THE FREE MORIMOTO XBT APP TO GET STARTED

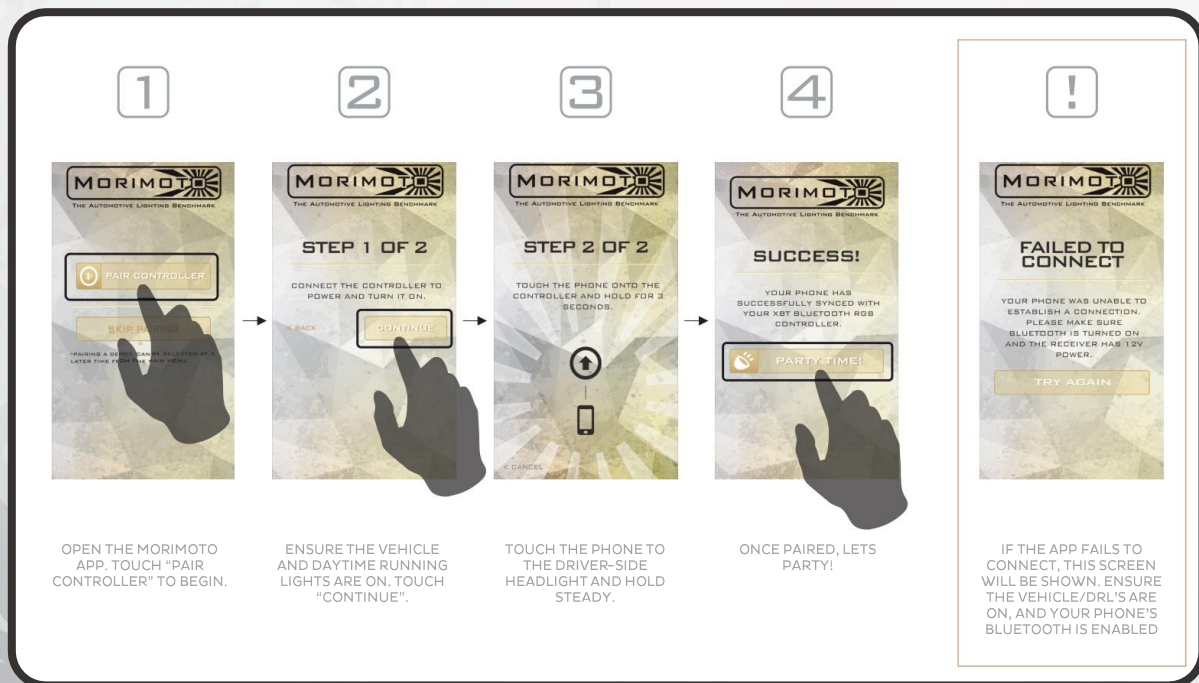


iOS



ANDROID

31. OPEN THE APP, AND FOLLOW THE PROMPTS ON THE SCREEN TO PAIR YOUR PHONE TO THE HEADLIGHTS



# RGB CONTROLLER PAIRING/OPERATION

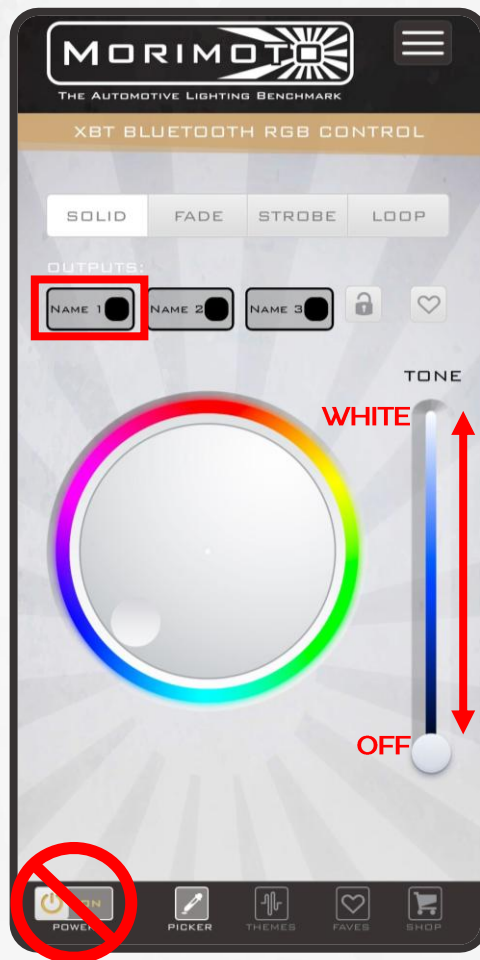
## FUNCTION NOTES

MAKE SURE YOUR APP IS SET TO "OUTPUT 1"

TO SWITCH YOUR DAYTIME RUNNING LIGHT TO WHITE, SIMPLY SLIDE THE TONE BAR ON THE RIGHTHAND SIDE OF THE SCREEN ALL THE WAY TO THE TOP

DO NOT USE THE ON/OFF TOGGLE IN THE BOTTOM LEFT TO TURN OFF THE DAYTIME RUNNING LIGHT AS THIS WILL TURN OFF THE CONTROLLER ENTIRELY. VEHICLE IGNITION WILL NEED TO BE CYCLED OFF AND BACK ON TO POWER THE CONTROLLER ON AGAIN. IF YOU WOULD LIKE TO TURN THE DAYTIME RUNNING LIGHT STRIP OFF, SLIDE THE TONE BAR ON THE RIGHTHAND SIDE OF THE SCREEN ALL THE WAY TO THE BOTTOM

THE CONTROLLER IS DESIGNED SO THAT WHEN THE VEHICLE IS TURNED ON, THE DAYTIME RUNNING LIGHT WILL DEFAULT TO THE COLOR IT WAS LAST SET TO





# **XRGB LED HEADLIGHTS: FORD SUPER DUTY (17-19)**



**- ENJOY YOUR NEW MORIMOTO XRGB HEADLIGHTS! -**

