

# REDROCK

## RETRACTABLE BED STEP - REAR MOUNTED

(2023-2025 F-250 / F-350)

### INSTALLATION INSTRUCTIONS

#### CONTENTS

- (1) Step Pad
- (1) Hinge Assembly
- (1) Bracket "A"
- (1) Bracket "B"
- (2) M10x1.50 x 30mm Bolts
- (4) M8x1.25 x 30mm Bolts
- (3) M8 Flange Nuts
- (3) T-25 Torx Screws

#### TOOLS REQUIRED

- 12, 13, 14, 15, 21mm
- Sockets / Wrenches
- Ratchet & Extensions
- Floor Jack

SKU # SD79546  
Edited: 10/13/2025

## REDROCK



#### STEP 1

Place the "A" bracket and "B" bracket together as shown in the diagram above. Then, loosely secure the brackets together using (3) M8 x 30mm bolts and (3) M8 flange nuts.

Note: The brackets must be assembled as shown for proper assembly/installation. Leaving the bolts loose at this time will allow for adjustments later.



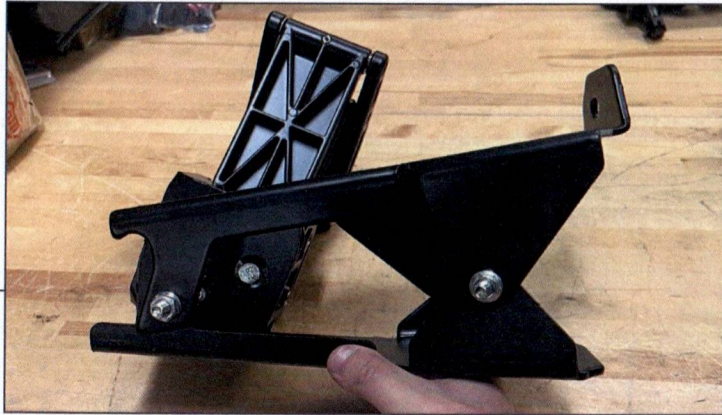
#### STEP 2

Mount the hinge assembly to the assembled brackets using (2) M10 x 30mm bolts and (1) M8 x 30mm bolt. Tighten each bolt until fully secure.

Note: To ensure all bolts are tight, it is recommended to place the brackets in a vice to hold the assembly into place while tightening.

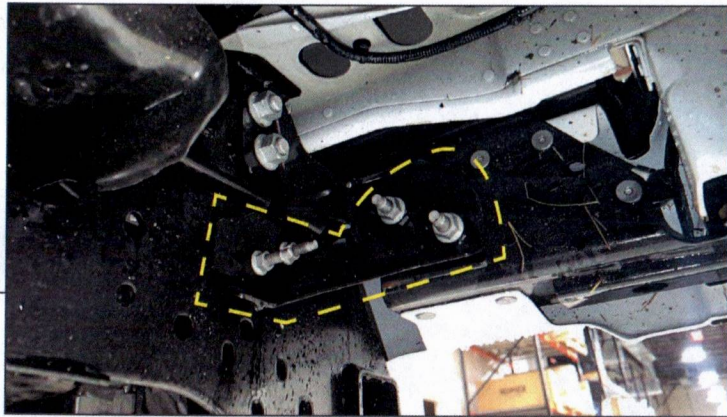
## REDROCK

### STEP 3



Tighten all mounting bracket hardware until the brackets are secure.

### STEP 4

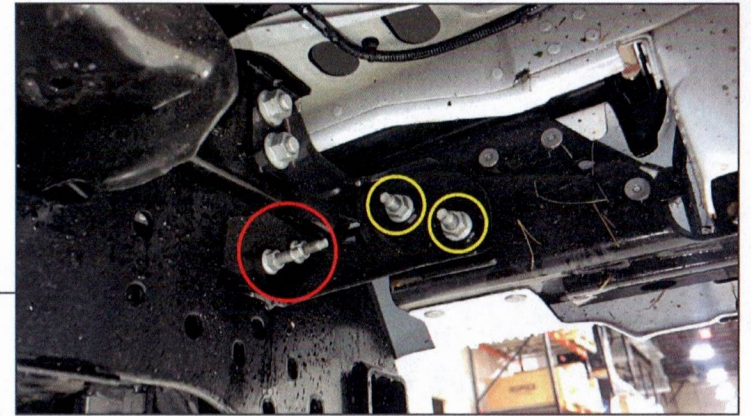


Behind the rear bumper on the driver side of the vehicle, locate the reinforcement bracket connecting the rear bumper to the frame.

At this time, it is recommended to place a floor jack under the rear bumper and apply light pressure to prevent the bumper from moving when removing the hardware.

## REDROCK

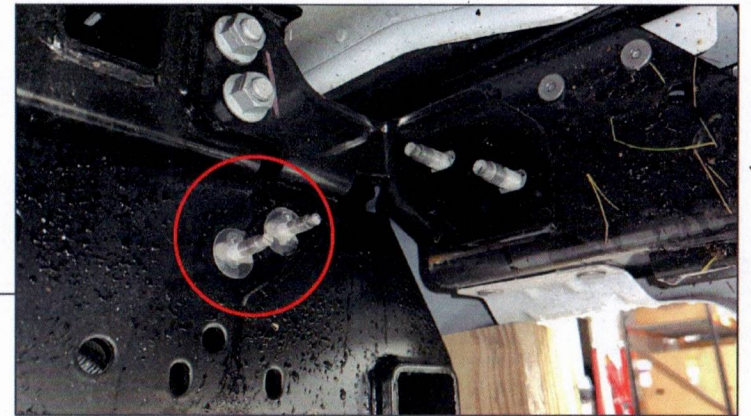
### STEP 5



Remove (2) 15mm nuts from the vehicle frame portion of the bracket.

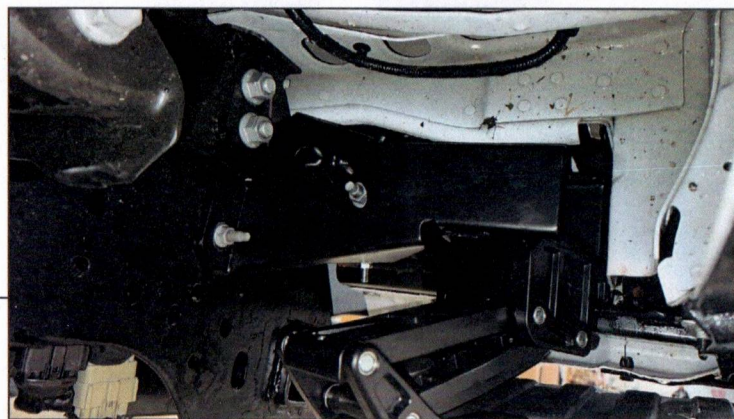
Remove (2) 21mm nuts from the vehicle bumper portion of the bracket.

### STEP 6



Remove the bracket from the vehicle. Then, remove the double stud plate from the vehicle frame.

## REDROCK



### STEP 7

Fit the step assembly to the rear bumper studs. Loosely secure using the original (2) 21mm nuts. Then, re-install the double stud plate through the frame and step assembly. Loosely secure using (1) original 15mm nut. Adjust the step to best fit, verify rear bumper fitment, and tighten the (2) 21mm bolts first, following with the (1) 15mm nut. The 21mm nuts can be reached through the brackets using an extension.

Note: Installing the second 15mm nut on the stud plate is not required, but is recommended.



### STEP 8

Place and fully seat the step pad to the hinge assembly. Secure the step pad to the hinge assembly using (3) T-25 Torx screws. Tighten until secure, do not over-tighten.

## REDROCK



### STEP 9

Installation is now complete.