

2019 - 2024 RAM 2500/3500 HARNESS INSTALLATION GUIDE

WWW.ANZOUSA.COM
5150 EUCALYPTUS AVE UNIT A • CHINO, CA 91710 • (888) 360 - 3696

DIFFICULTY LEVEL

EASY



HARD



**READ COMPLETE INSTRUCTIONS BEFORE INSTALLATION!
IMPROPER INSTALLATION MAY VOID WARRANTY**



ANZOUSA™ PRODUCTS ARE COVERED TO BE FREE OF MANUFACTURING DEFECTS BY A LIMITED TWO-YEAR WARRANTY. HOWEVER, CERTAIN ANZOUSA™ PRODUCT CATEGORIES HAVE WARRANTY POLICIES WHICH DIFFER FROM THIS STANDARD. PLEASE CONTACT YOUR REPRESENTATIVE FOR DETAILED CATEGORY INFORMATION. DAMAGE DUE TO IMPROPER INSTALLATION OR ROAD HAZARDS IS NOT COVERED. SELLER AND MANUFACTURER'S ONLY OBLIGATIONS SHALL BE TO REPLACE THE PRODUCT PROVEN TO BE DEFECTIVE. NEITHER SELLER NOR MANUFACTURER SHALL BE LIABLE FOR ANY INJURY, LOSS OR DAMAGE, DIRECT OR CONSEQUENTIAL, ARISING OUT OF THE USE OF OR THE INABILITY TO USE THE PRODUCT. BEFORE USE, USER SHALL DETERMINE THE SUITABILITY OF THE PRODUCT FOR ITS INTENDED USE, AND USER ASSUMES ALL RISK AND LIABILITY WHATSOEVER IN CONNECTION THEREWITH.

© 2023 ANZOUSA™ ALL RIGHTS RESERVED

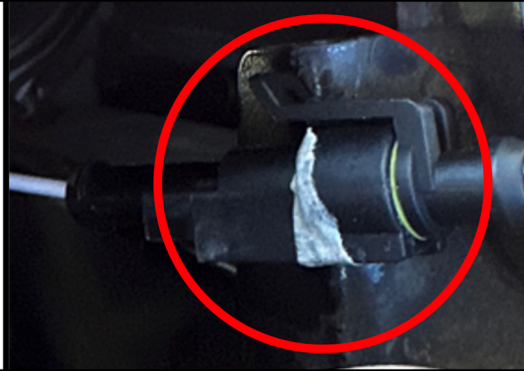
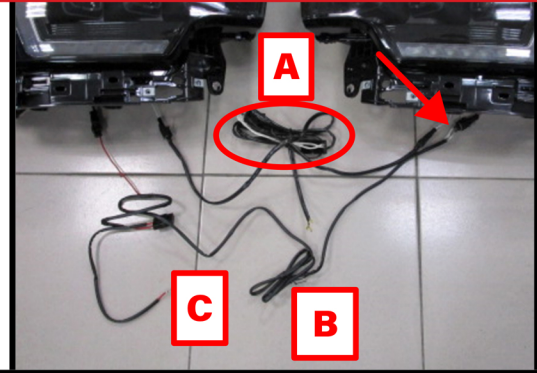
TITLE: **2019 - 2024 RAM 2500/3500 HEADLIGHTS**

PART NUMBER: **111601X**

STEP 1

LOCATE PROVIDED DRL/INITIATION HARNESS WITH HEADLIGHTS.

- A. DRL HARNESS (WHITE WIRE)
- B. INITIATION HARNESS (RED WIRE)
- C. FORK SPADE CONNECTORS OF HARNESS A AND B.



STEP 2

CONNECT THE DRL HARNESS TO BOTH SIDES OF THE NEW HEADLIGHTS.

- A. WHITE WIRE CONNECTOR TO WHITE WIRE FOR DRL HARNESS.
 - B. RED WIRE CONNECTOR TO RED WIRE FOR DRL HARNESS.
- THE SHORTER SIDE OF THE HARNESSES IS FOR DRIVER'S SIDE, AND THE LONGER SIDE IS FOR PASSENGER'S SIDE.

STEP 3

CONNECT FORK SPADE CONNECTORS ON DRL HARNESS TO BATTERY.
RED WIRE TO POSITIVE(+) SIDE OF BATTERY.
BLACK WIRE TO NEGATIVE(-) SIDE OF BATTERY.



STEP 4

ROUTE HARNESS ALONG RADIATOR SUPPORT AND SECURE WITH ZIP TIES.

STEP 5

THE NEW HEADLIGHTS ARE EQUIPPED WITH DRL COLOR SWITCH. PRESS THROUGH RUBBER COVER TO SWITCH BETWEEN AMBER OR WHITE DRL MODE. DO NOT REMOVE RUBBER COVER (IMAGE WITH COVER OFF SHOWN FOR ILLUSTRATIVE PURPOSES ONLY).

TEST ALL FUNCTIONS OF NEW HEADLIGHTS BEFORE DRIVING ON THE ROAD.

