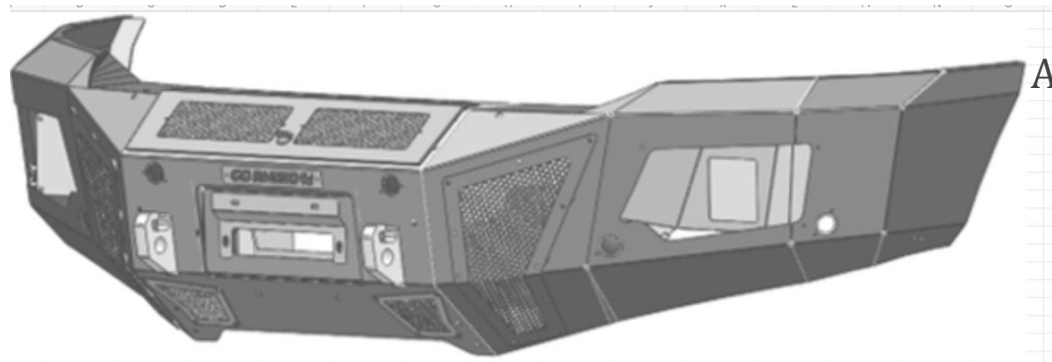


## INSTALLATION INSTRUCTIONS

PART NO:

- 24225T



APPLICATION:

Ram HD

Excludes Power Wagon

PRODUCT DESCRIPTION:

BR11 BUMPER REPLACEMENT

### PRODUCT SAFETY & LEGAL DISCLAIMER

- **IMPORTANT READ ALL INSTRUCTIONS CAREFULLY BEFORE INSTALLING, FAILURE TO DO SO MAY CAUSE PERSONAL INJURY OR DAMAGE TO PRODUCT AND/OR PROPERTY.**
- **Review the product package and contents prior to beginning the installation.** Take care when opening the packaging and removing items. If a return is needed you will want to return the product in its original packaging if possible.
- This instruction guide is provided as a GENERAL installation guide, some vehicles vary dimensionally and may require additional steps.
- Test fit the product on the vehicle prior to any third party modifications and or finishing. The manufacturer and/or distributors do not accept responsibility for third party charges, labor and or third part replacement modifications. Some modifications may void the factory warranty.
- Exercise due-diligence when installing this product. The manufacturer and distributors of this product do not accept any responsibility for vehicle damage or personal injury resulting from the installation of this product. Careless installation and operation can result in serious injury or equipment damage.
- This product is for general off-road use. All liability for installation and use rests with the owner/operator.
- **INSTALLER:** Once installation is complete, please return this guide along with other documentation included in this product back to the consumer for future reference. The manufacturer/distributors of this product do not guarantee this particular version will be available at a later date.

© 2016 Go Rhino Products. All rights reserved

[www.gorhino.com](http://www.gorhino.com)

589 W. Apollo St., Brea, CA 92821

P: 888 427 4466



## INSTALLATION INSTRUCTIONS

### INJURY HAZARD

Please complete a shop and tool inspection prior to beginning the installation.

- Always make sure you have a clean, dry and well lit work area.
- Always remove jewelry, loose fitting clothing and wear protective gloves and eye protection.
- Always use extreme caution when jacking or raising a vehicle for work. Set the emergency brake and use tire/wheel blocks and jack stands. Refer to the vehicle manufacturer hand book. Utilize the vehicle manufacturers designated lifting points.
- Always use appropriate and adequate care in lifting parts during disassembly and installation. Seek help in lifting heavy or large items into place. Utilize jacks and or lifting devices when available.
- Always insure products are secure during disassembly and installation.
- Always wear eye protection and take steps to protect any exposed skin during the installations. Drilling, cutting and grinding plastic and metal may create flying particles that can cause injury.
- Always use extreme caution when drilling, cutting and or grinding on a vehicle. Thoroughly inspect the area to be drilled, on both sides of material, prior to modification and relocate any objects that may become damaged.
- Always assemble and tighten all fasteners per the installation instructions.
- Always route electrical cables carefully. Avoid moving parts, parts that may become hot and rough or sharp edges.
- Always insulate and protect all exposed wiring and electrical connections.

### MAINTENANCE AND CARE

- Always perform regular inspections and maintenance on mounts and related fasteners.
- Periodically check and tighten all fasteners.
- Stripped, fractured, or bent fasteners must be replaced.
- After washing the vehicle make sure to fully dry all surfaces.
- In areas with cold temperatures make sure to wash the product often to remove harmful materials used on road ways.
- Never use abrasive cleaners or polish compounds. Clean with a gentle soap and water. If you use wax use a non-abrasive automotive wax such as pure carnauba wax.

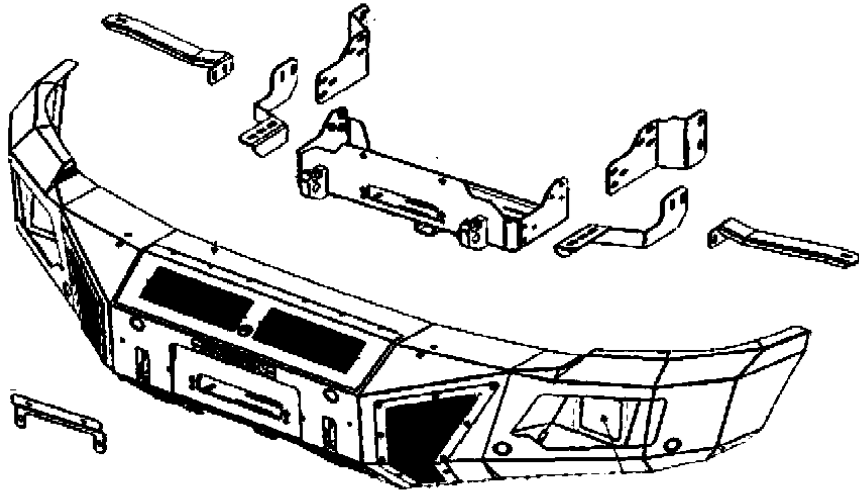
### WARNING

Some products have been designed to work together with factory rear sensor systems, factory forward facing sensor systems and factory air bags.

- Installation of some of these products may alter the factory sensor system performance.
- Factory sensors may read shackles or hooks protruding from the fairlead and or tow hooks.
- All sensor testing is completed by Go Rhino Products and or third party testing labs on modified vehicles.
- Sensor sensitivity, factory sensor housing, orientation, and operating conditions are all variables that will influence functionality of the sensors.
- Installation of some product may effect the factory air bag systems.
- Some products allow the use of third party products such as winches, shackles, hooks, etc. Follow the respective manufacturers operating instructions for use with our products.
- Make sure to fully understand the product, it's intended use and operation prior to use.
- Above all... be safe!

## INSTALLATION INSTRUCTIONS

PARTS INCLUDED IN THIS LIST:



ITEM	QTY.	DESCRIPTION	ITEM	QTY.	DESCRIPTION	ITEM	QTY.	DESCRIPTION
1	1	Frame Bracket (driver)	10	2	Vent Covers (pre installed)	19	12	1/2" Lock Washer
2	1	Frame Bracket (passenger)	11	2	Light Pod Plates (pre installed)	20	12	1/2" Hex Nut
3	1	Auxiliary Bracket (driver)	12	2	3/8" x 1 1/4" Hex Bolt	21	4	M12-1.75 x 95MM
4	1	Auxiliary Bracket (passenger)	13	4	3/8" Flat Washer	22	8	M12 Flat Washer
5	1	Support Bracket (driver)	14	2	3/8" Lock Washer	23	4	M12 Lock Washer
6	1	Support Bracket (passenger)	15	2	3/8" Hex Nut	24	4	M12 Hex Nut
7	1	Winch Tray	16	6	1/2" x 1 1/2" Hex Bolt			
8	1	Bumper Shell	17	6	1/2" x 1 1/2" Carriage Bolt			
9	1	License Plate Bracket	18	12	1/2" Flat Washer			

Go Rhino recommends you, the installer, read this installation instruction manual from front to back before installing the product. You may also [click here](#) to view an installation video or visit <http://www.gorhino.com/Installation-Videos>.

### TOOLS NEEDED FOR INSTALLATION:

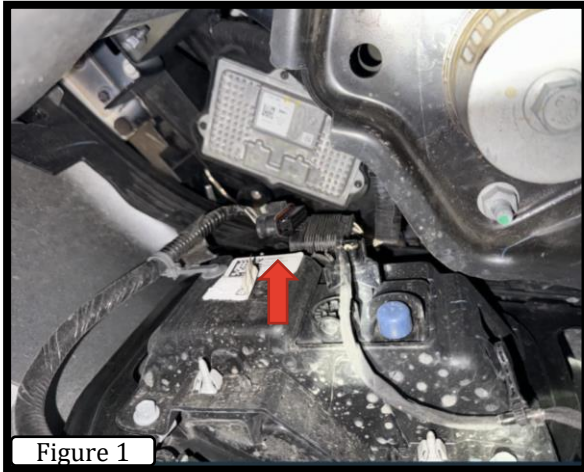
- Breaker Bar
- Ratchet
- 24MM Socket
- 18 MM Socket
- 18MM Wrench
- Prytool

ESTIMATED TIME FOR INSTALLATION:

2-3 Hours

If you need installation service for your new product, call the authorized distributor from whom you purchased the product or an authorized installation service company which can be found by calling toll free 1-888-427-4466

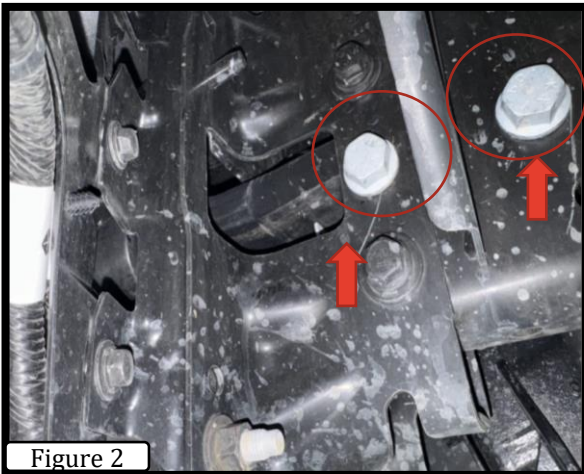
## INSTALLATION INSTRUCTIONS



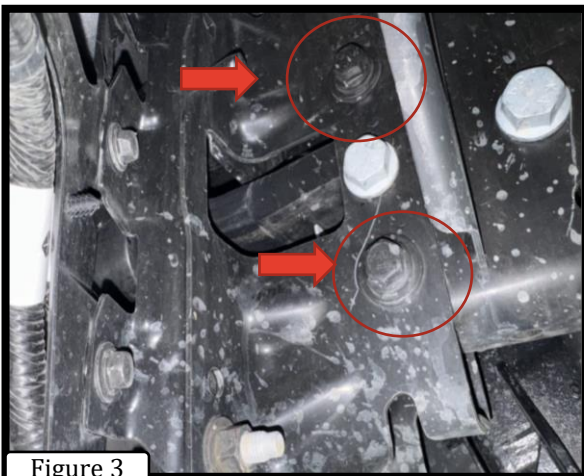
**Step-1** Open the hood and disconnect the vehicle battery. Beginning on the driver side, go under the vehicle and if equipped disconnect the factory fog light wiring harness from the fog light (FIGURE 1).

If the vehicle has these options or equipment:

Engine Block Heater / Remove the fasteners securing the power cord to the passenger side of the factory bumper



**Step-2** Remove the nuts and bolts (2) per side securing the factory tow hooks to the frame using a 24mm wrench, socket and ratchet, (FIGURE 2). Repeat Steps on passenger side.



**Step-3** Remove the bolts(2) per side and nuts securing the bumper brackets to the frame using an 18mm socket and ratchet. With assistance remove the factory bumper from the vehicle and set it aside. (FIGURE 3). Repeat Steps on passenger side.

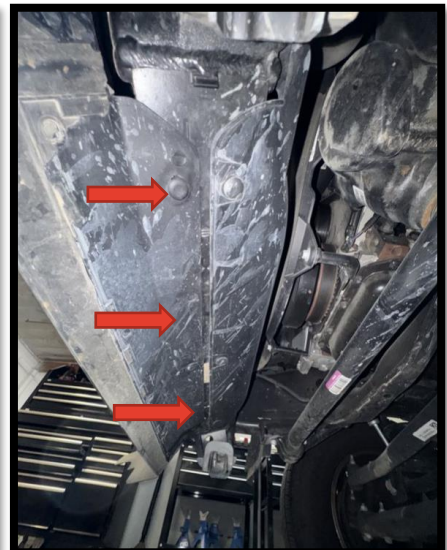


# GO RHINO®

## INSTALLATION INSTRUCTIONS



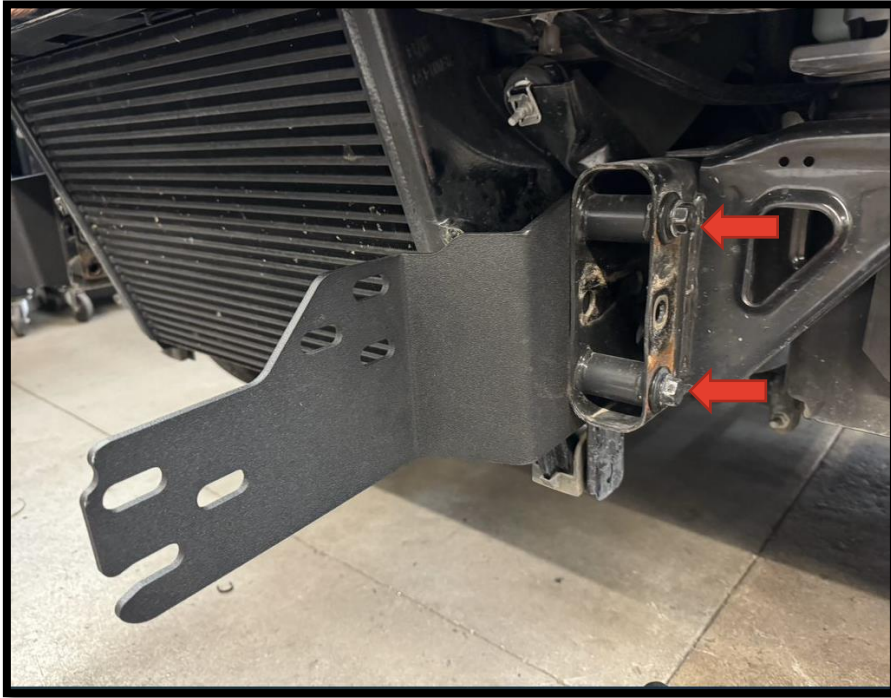
**Step-4** Use the appropriate pry tool to pull the inner fender liner out from the outer bumper. With assistance remove the factory bumper from the vehicle and set it aside



**Step-5** Remove the (4) bolts using a 10MM socket and (3) plastic push in connectors securing the shroud to the bottom of the intercooler using the tip of a screwdriver. ***You may reinstall the intercooler shroud once the winch tray is installed. Using the appropriate cutting tool, trim the sides to fit accordingly.***

## INSTALLATION INSTRUCTIONS

### BR11 Bumper Replacement Installation



**Step-1** Install the driver side frame bracket by positioning the bracket on the inboard side of the frame. Align the holes in the frame bracket with the holes in the frame used for the OEM bumper bracket attachment, and then secure the bracket to the frame using the ½"X 3 ½" Hex bolt (2) ½" Hex Nut (2), ½" Flat Washer (4), ½" Lock Washer (2) , (Fig 1 & 2). Leave the nuts and paired bolts loose for final adjustment. Repeat this step to install the passenger side frame bracket.



**Step-2** Install the driver's side auxiliary bracket and support bracket by positioning the auxiliary bracket on the inboard side of the frame and the support bracket on the outboard side of the frame. Align the holes in the brackets with the holes in the frame used for the OEM under rider bracket attachment, and then secure the auxiliary bracket and support bracket to the frame using (2) M12-1.75 x 95MM , (4)M12" flat washers, (2) M12" lock washers and (2) M12" hex nuts, Leave the bolts loose for final adjustment. Repeat this step to install the passenger side auxiliary bracket



## INSTALLATION INSTRUCTIONS

### BR11 Bumper Replacement Installation

**Step-3** Position the winch tray on top of the auxiliary brackets. Align the holes and secure the winch tray to each frame bracket using (3) ½" x 1 ½" hex bolts, (3) ½" flat washers and (3) ½" lock washers, and to each auxiliary bracket using (3) ½" x 1 ½" carriage bolts, (3) ½" flat washers, (3) ½" lock washers and (3) ½" hex nuts. Leave the nuts and bolts loose for final adjustment.



**Note:** If you are installing a winch, place the winch in the winch tray and refer to the winch manufacturer's instructions for installation. Do not install the fairlead at this time.



## INSTALLATION INSTRUCTIONS

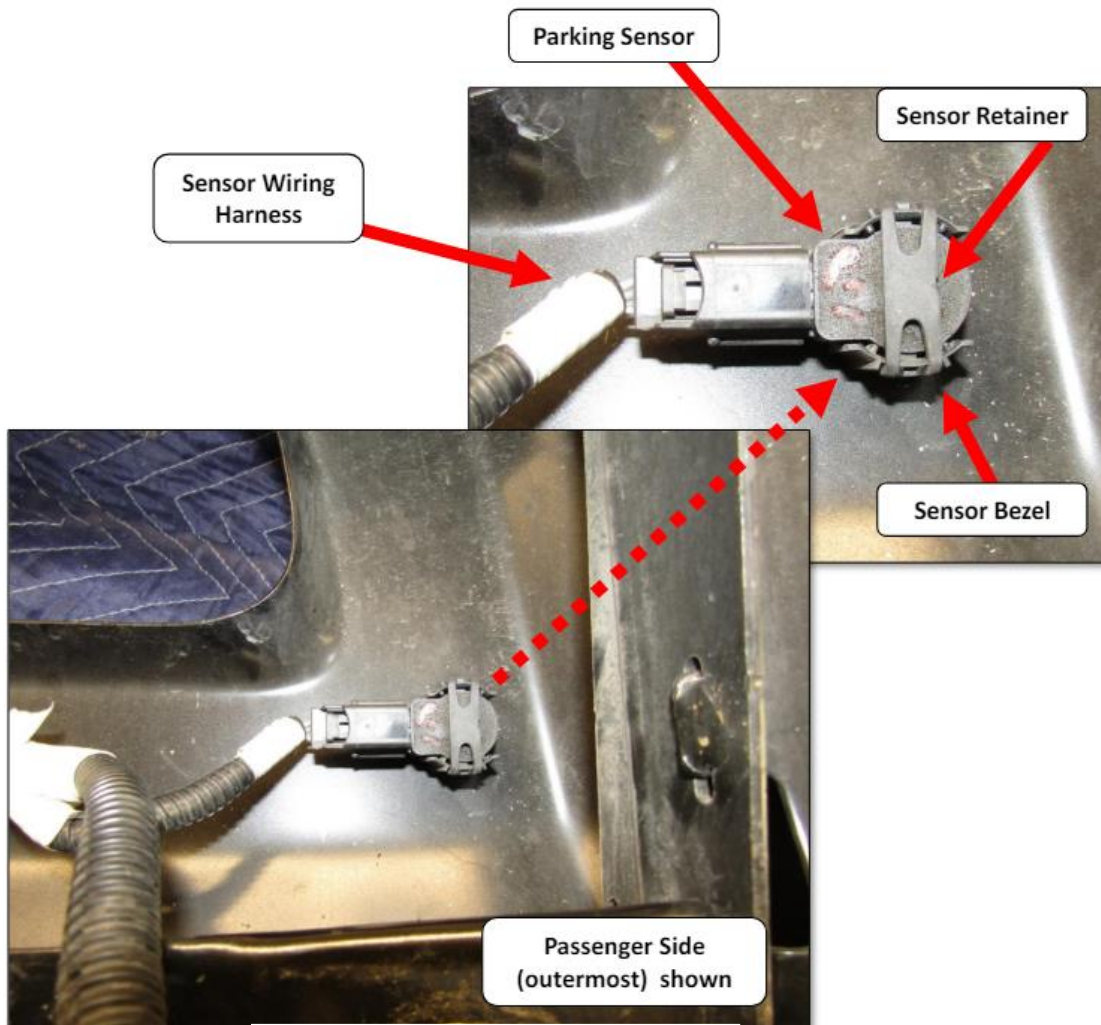
### BR11 Bumper Replacement Sensor Installation

If your vehicle is not equipped with front Park Assist, move ahead to page the next steps of the BR11 Bumper Installation instructions. If your vehicle is equipped with front Park Assist, continue with the following steps. Note: The Park Assist sensors and sensor bezels have to be installed in the BR11 bumper replacement in the same position as removed from the OEM bumper.

**Step-1** Disconnect the parking sensors from the OEM bumper wiring harness and remove the wiring harness from the OEM bumper

**Step-2** Remove each parking sensor from the bezel by removing the retainer, then gently spreading the bezel tabs and pulling out on the back of the sensor. Note: Do not push on the front of the sensor as this may damage it.

**Step 3** Remove the parking sensor bezels from the OEM bumper by depressing the tabs around the base and pushing the bezel out through the front of the bumper.





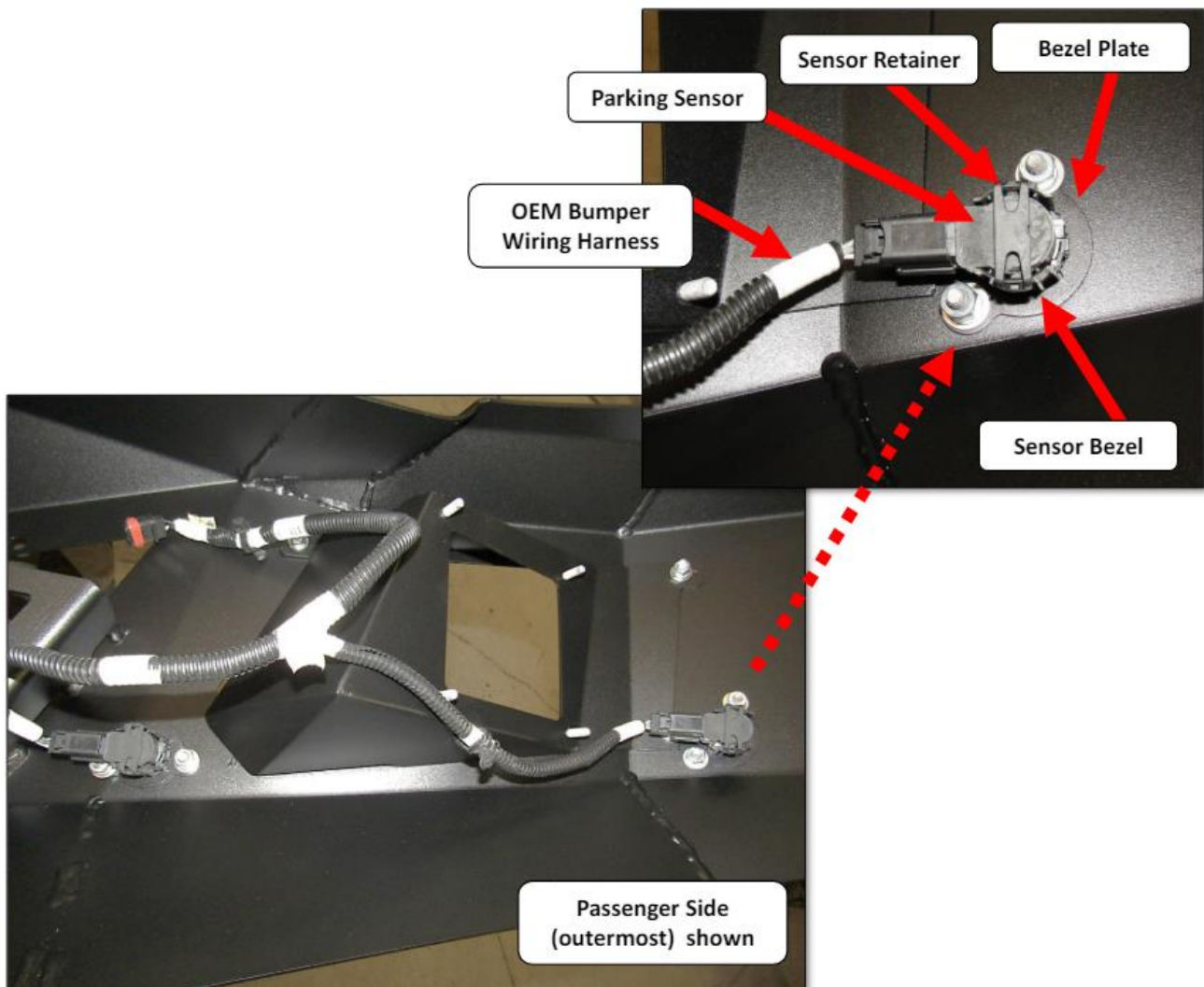
## INSTALLATION INSTRUCTIONS

### BR11 Bumper Replacement Sensor Installation

**Step-4** Remove the (6) plastic plugs from the sensor bezel plates that are pre installed in the BR10.5 bumper replacement.

**Step-5** Aline the protrusions on each sensor bezel with the profile in the matching bezel plate, then from the front of the BR11 bumper push the bezel through the profile in the plate until the tabs around the base lock in position. Note: The Park Assist sensors and bezels have to be installed in the BR11 bumper replacement in the same position as removed from the OEM bumper.

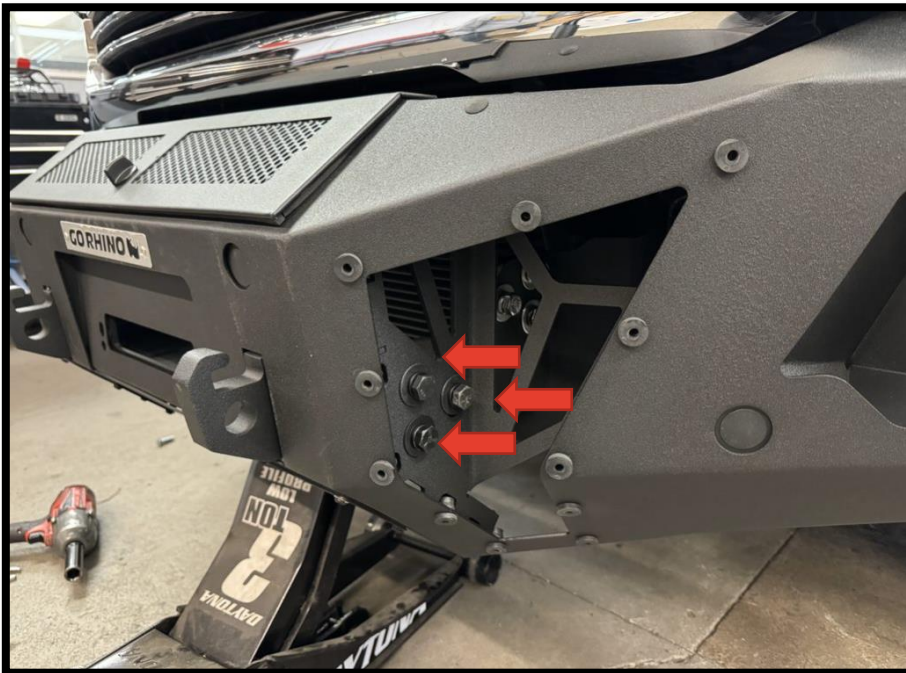
**Step-6** Install the parking sensors in the sensor bezels and retainers, then transfer the OEM bumper wiring harness to the BR11 bumper replacement and re-connect to the parking sensors.



## INSTALLATION INSTRUCTIONS

### BR11 Bumper Replacement Installation

**Step-4** The pre-installed Mesh Vent Covers need to be removed from each side of the bumper using hand tools to slowly remove the bolts, (Fig 8). Note: Using an air assisted impact or ratchet will damage the bolt threads and rubber rivet-nut assembly



**Step-5** With assistance lift the bumper shell up to the vehicle, align the holes in the bumper shell brackets with the holes in the frame brackets, and weld nuts on the winch tray. Secure the bumper shell bracket to each side of the winch tray using (3) ½" x 1 1/2" hex bolts, (3) ½" lock washers and (3) ½" flat washers, (Fig 9). Leave the bolts loose for final adjustment.

## INSTALLATION INSTRUCTIONS

### BR11 Bumper Replacement Installation



**Step-6** Attach the opposite end of each support bracket to the bumper shell bracket using (1) 1/2" x 1 1/2" hex bolt, (2) 1/2" flat washers, (1) 1/2" lock washer and (1) 1/2" hex nut, (Fig 10). Trim the fender liner to your desired fit with the appropriate cutting tool.

**Step-7** With assistance, adjust and hold the bumper shell visual alignment position, then tighten all supplied nuts and bolts securing all brackets, winch tray and bumper shell.







# INSTALLATION INSTRUCTIONS

## LIMITED WARRANTY

Go Rhino warrants to Buyer that for a period of five (5) years from the date of shipment of the product(s) ("Warranty Period") for black finishes and chrome finishes, that such products will materially conform to the specifications set forth in Go Rhino's specifications in effect as of the date of shipment(s) and will be free from material defects in material workmanship.

Go Rhino warrants to Buyer that for the life of the product(s) from the date of shipment of the product(s) ("Warranty Period") for polished stainless steel finished products purchased after April 2004, that such products will materially conform to the specifications set forth in Go Rhino's specifications in effect as of the date of shipments and will be free from material defects in material workmanship.

Warranty claims must be accompanied with the original invoice and photos of the product. It is the customer's responsibility to clean regularly and protect finish with regular applications of a nonabrasive polish that is compatible with the product's finish.

This warranty covers the cost of the product only and does not include the cost of removal, installation, third party modifications or shipping of the product. In no event shall Go Rhino be liable to buyer or any third party for any damage or harm caused by the product or use thereof, regardless of weather such damages were foreseeable and whether or not Go Rhino has been advised of the possibility of such damages, not withstanding the failure of any agreed or other remedy of its essential purpose. This warranty is void if the product shows signs of alteration, misuse, mishandling, improper care, neglect, improper application and/or damage due to improper installation.

With respect to any such product(s) during the limited warranty period, Go Rhino shall, in its sole discretion, either: (i) provide a one-time repair or replacement of such products (or the defective part) or (ii) credit or refund the price of such products at the pro rata contract rate provided that, if Go Rhino so requests, Buyer shall, at Go Rhino's expense, return such product(s) to Go Rhino. The remedies shall be the Buyer's sole and exclusive remedy and Go Rhino's entire liability for any breach of the limited warrant(ies).

Go Rhino disclaims all other warranties except to the extent that any such warranty cannot be validly disclaimed under applicable law.

### **Finish Limited Warranty:**

Limited lifetime on stainless steel products (after April 2004)

5 year warranty on black powder coat products

5 year warranty on chrome products

This warranty does not cover exposed welds

Finish warranty covers peeling, flaking, or cracking. Washing all finishes regularly with car wash soap and rinsing well with water is the best method for maintaining the finish on your products. You must also protect the finish with nonabrasive automotive wax on a regular basis. The use of any compound which contains abrasives becomes a self-defeating exercise as the compound scratches the finish and opens it to corrosion. The use of harsh chemicals used to remove bugs and tar may also cause the finish to fail and should be avoided.

If you are unsatisfied with your purchase please contact the establishment you purchased the product from.

If you need to place a warranty claim or need assistance, the Go Rhino customer service team will answer any questions you may have. Please contact the Go Rhino customer service team at 1-888-427-4466 during normal business hours Monday thru Friday 7 am to 5 pm PST. You may also email [warranty@gorhino.com](mailto:warranty@gorhino.com). In order to better serve you please provide a copy of the original invoice / receipt, a photo of the issue you are experiencing and a photo of the vehicle the product is installed on.

All warranty returns must have an approved RGA number. The RGA number must be clearly marked on the exterior of the return package. All approved warranty returns must be shipped to Go Rhino Products, 1002 Carriers Drive, Laredo, Texas 78045.

## PRODUCT REGISTRATION

Please remember to register your new purchase. You may register your product at [www.gorhino.com](http://www.gorhino.com). Registering your product may help speed any future warranty or customer service inquiries.

**Thank you again for purchasing from Go Rhino Products**

Please take a few minutes to view additional products for your vehicle and more at [GORHINO.com](http://GORHINO.com)  
These installation instructions are available on the Go Rhino web site along with installation videos for many of our products.

[www.gorhino.com](http://www.gorhino.com)

[www.bigcountryauto.com](http://www.bigcountryauto.com)

[www.gorhinopd.com](http://www.gorhinopd.com)