



STEERING BRACE

(2017-2025 2500 / 3500 - EXCLUDING VEHICLES WITH ELECTRONIC SWAY BAR DISCONNECT)

INSTALLATION INSTRUCTIONS

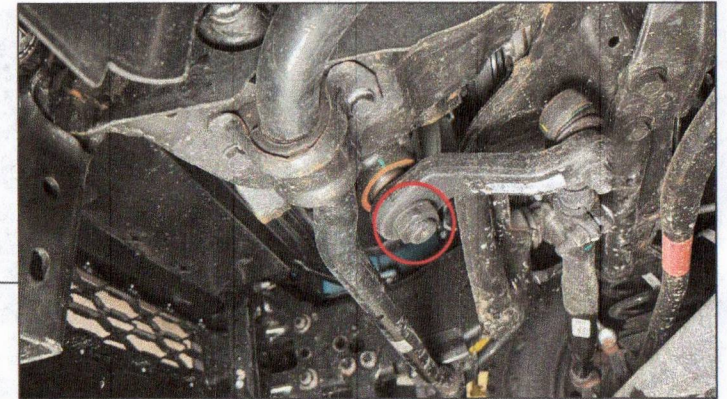
CONTENTS

- (1) Steering Brace
- (1) Bearing Assembly
- (1) Bearing Spacer
- (1) Pitman Arm Nut
- (1) Grease Zerk Fitting w/ Cap
- (2) M12x1.75 x 40mm Bolts
- (4) M12 Flat Washers
- (2) M12 Lock Nuts
- (4) M10x1.50 x 35mm Bolts
- (4) M10 Flat Washers

TOOLS REQUIRED

- 15mm, 16mm Sockets
- Ratchet
- 1-3/4" Deep Socket
- 1-13/16" Deep Socket OR Large Adjustable/Crescent Wrench

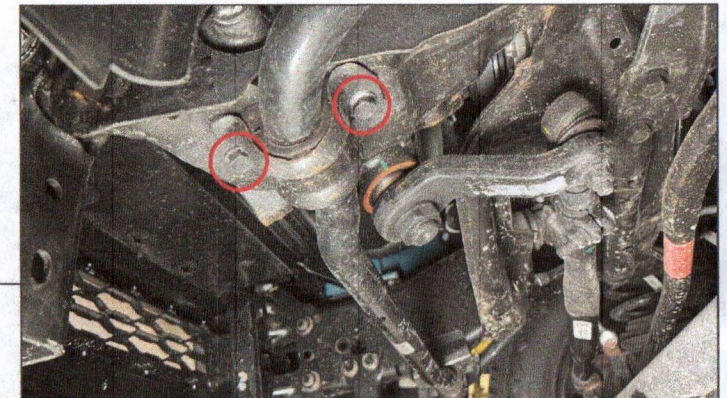
SKU # SHR66837



STEP 1

Park the vehicle on a flat, level surface. Engage the parking brake. Loosen and remove the pitman arm nut using a 1-3/4" deep socket.

Note: If the vehicle has undercoating or corrosion on the threads, it is recommended to clean the visible pitman arm threads before attempting to remove. If heavily corroded, apply penetrating oil to the threads.



STEP 2

Remove the (4) 15mm bolts securing the sway bar to the vehicle frame. Then, lower the sway bar down towards the vehicle axle.



STEP 3

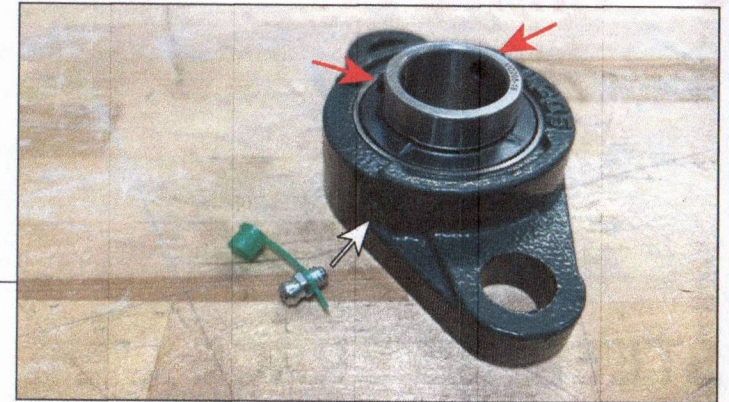
Fit the included pitman arm nut onto the vehicle pitman arm. It is recommended to add some threadlocker to the pitman arm threads. Tighten the nut to the pitman arm using a 1-13/16" deep socket or a large crescent wrench. Torque to 332 ft. lbs.



STEP 4

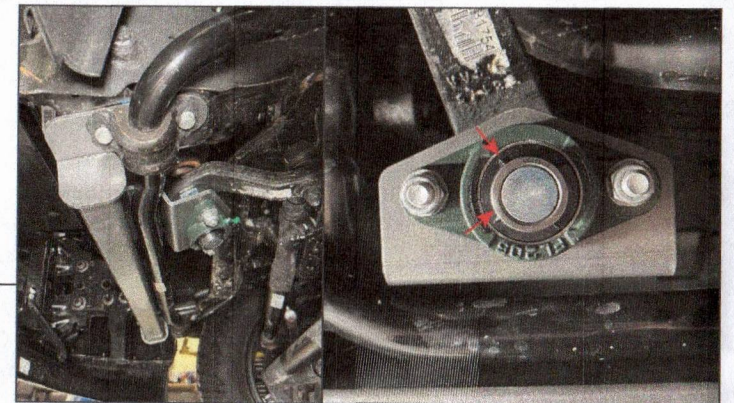
With a helper, fit the steering brace between the vehicle frame and the sway bar. Loosely secure into place using the included (4) M10x1.50 x 35mm bolts and (4) M10 flat washers.

The steering brace must remain loose at this time to ensure accurate placement of the bearing assembly.



STEP 5

Thread the grease zerk fitting with cap into the bearing flange. Then, loosen the (2) set screws using the included 3mm Allen key.

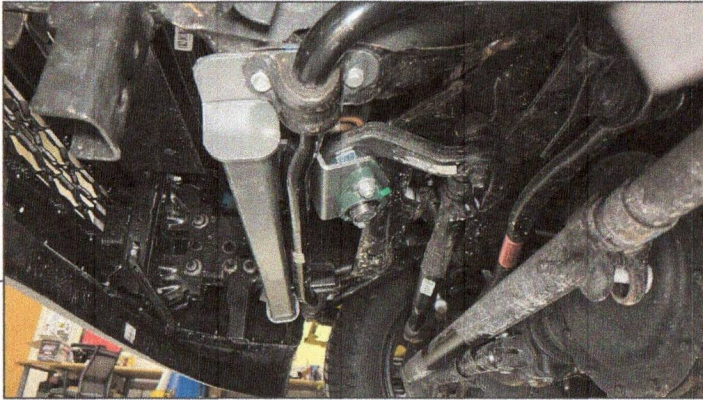


STEP 6

Fit the bearing assembly to the steering brace and pitman arm nut. *Some vehicles will require using the included spacer between the steering brace and the bearing flange.

Once the bearing assembly is fully seated on the pitman arm nut, secure into place using (2) M12x1.75 x 40mm bolts, (4) M12 flat washers, and (2) M12 lock nuts.

Tighten the (2) 3mm set screws to lock the bearing assembly to the pitman arm nut.



STEP 7

Fully secure the steering brace and sway bar to the vehicle frame using the (4) previously installed 15mm bolts. Torque to 61 ft. lbs.

Grease with synthetic grease through the zerk fitting.

Installation is now complete.