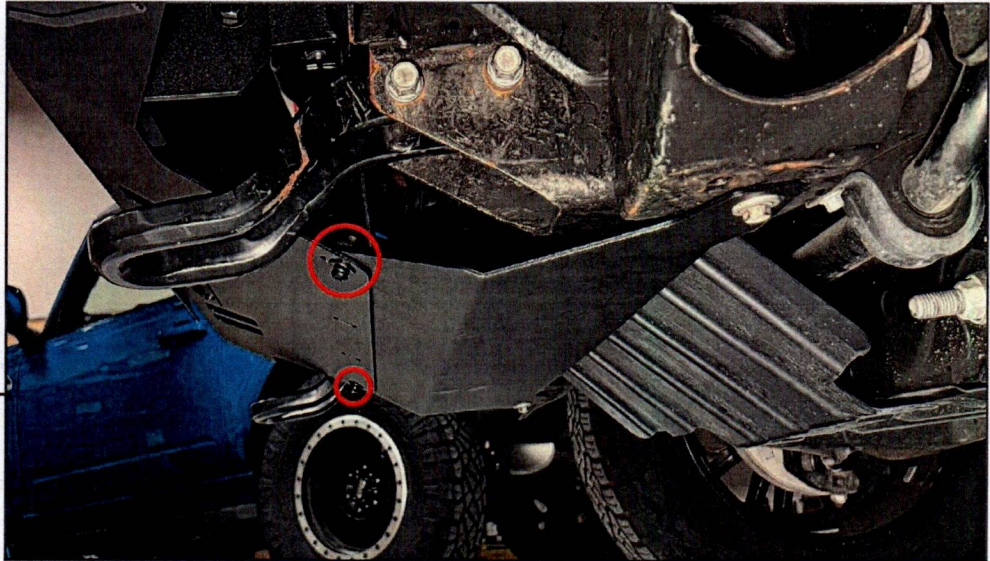


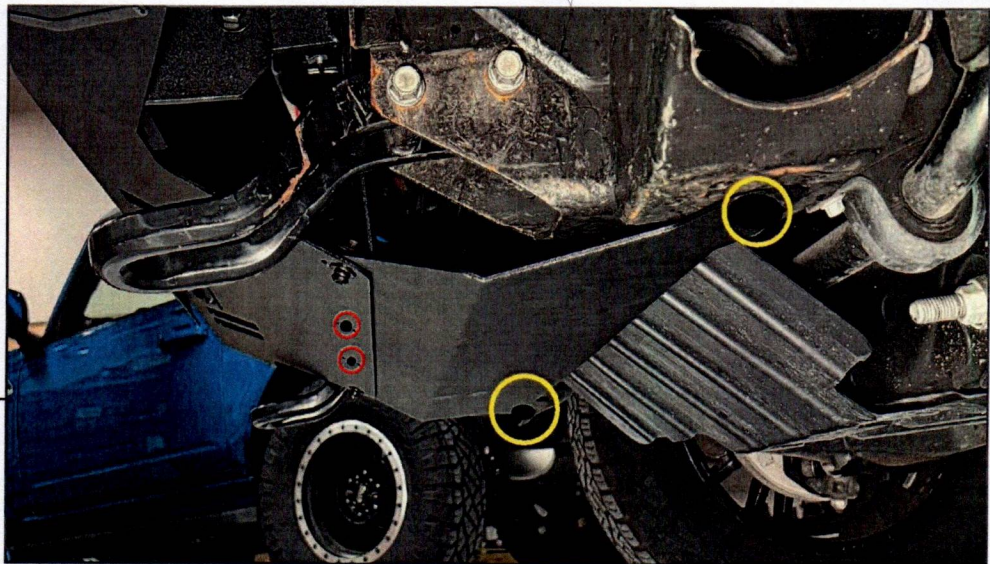
BARRICADE



STEP 1

With the bumper mounted to the vehicle, remove the (2) Allen bolts securing the bottom of the bumper to the "L" brackets.

Then with a helper, lift the skid plate between the bumper and the "L" bracket, and loosely re-install the (2) Allen bolts.



STEP 2

Loosely fit the (2) M8 Allen bolts, (2) M8 lock washers, and (2) M8 flat washers through the bottom of the bumper and into the skid plate threaded inserts.

Lift the rear of the skid plate to the vehicle frame, and loosely secure using (2) M10 x 30mm Allen bolts, (2) M10 lock washers, and (2) M10 flat washers. Adjust the skid plate, and then fully tighten all hardware to secure into place.

Installation is now complete.



SKID PLATE FOR MODULAR HD FRONT BUMPER

(2020-2023 SILVERADO 2500HD / 3500HD)

INSTALLATION INSTRUCTIONS

CONTENTS

- (1) Skid Plate
- (2) M10x1.50 x 30mm Allen Bolts
- (2) M10 Lock Washers
- (2) M10 Flat Washers
- (4) M8x1.25 x 25mm Allen Bolts
- (4) M8 Lock Washers
- (4) M8 Flat Washers
- (1) 5mm Allen Key
- (1) 4mm Allen Key

TOOLS REQUIRED

- 4mm Allen Key (Provided)
- 5mm Allen Key (Provided)
- 15mm Socket
- Ratchet

SKU # HS69452