

PART #	DESCRIPTION
37701CP	99-UP FSD 4WD 3-6" REAR 2.5 VS PB CDCV PAIR

COMPONENTS INCLUDED	
(2) 134941PBC 99-UP FSD 4WD REAR 2.5 VS PB CDCV	
HARDWARE INCLUDED	
(1) 257161 HEIM SPACER COM10 X 14MM X 1.925 (1) 257162 HEIM SPACER COM10 X 14MM X 1.175	(2) 257164 HEIM SPACER COM10 X .500 X 1.500
TOOLS REQUIRED	
JACK JACK STANDS TORQUE WRENCH	18MM SOCKET / WRENCH 21MM SOCKET / WRENCH
TECH NOTES	
<p>1. YOUR ICON SHOCK ASSEMBLIES COME FACTORY CHARGED TO 150 PSI. RELEASING NITROGEN PRESSURE MAY LEAD TO SHOCK MALFUNCTION AND REDUCED RIDE QUALITY. FAILURE CAUSED BY LOW NITROGEN PRESSURE IS NOT COVERED UNDER ICON'S WARRANTY POLICY.</p> <p>2. THE LOWER HEIM SPACERS FOR 99-16 AND 17-UP ARE INCLUDED. USE THE 14MM SPACERS FOR 17-UP APPLICATIONS.</p>	



WARNING!
<p><b>** READ ALL INSTRUCTIONS THOROUGHLY FROM START TO FINISH BEFORE BEGINNING INSTALLATION! IF THESE INSTRUCTIONS ARE NOT PROPERLY FOLLOWED SEVERE FRAME, SUSPENSION AND TIRE DAMAGE MAY RESULT TO THE VEHICLE!</b></p> <p><b>** ICON VEHICLE DYNAMICS RECOMMENDS THAT YOU EXERCISE EXTREME CAUTION WHEN WORKING UNDER A VEHICLE THAT IS SUPPORTED WITH JACK STANDS.</b></p> <p><b>** ICON VEHICLE DYNAMICS RECOMMENDS ALL INSTALLTION TO BE PERFORMED BY A PROFESSIONAL SHOP/SERVICE TECHNICIAN. PRODUCT FAILURE CAUSED BY IMPROPER INSTALLATION WILL NOT BE COVERED UNDER ICON'S WARRANTY POLICY.</b></p>

## INSTALLATION

- Using a properly rated jack, raise the rear of the vehicle and support the frame rails with jack stands. Ensure the jack stands are secure and set properly before lowering the jack. NEVER WORK UNDER AN UNSUPPORTED VEHICLE.
- Remove the factory shocks using 18mm and 21mm socket/wrench.
- Slide the wider spacer onto the stud on the upper shock mount. Slide the shock into the shock mount with the reservoir facing away from the axle. The driver side reservoir may need to be clocked (toward the spare tire) away from a wiring harness. Slide the narrow spacer onto the stud. [Torque to factory spec] [FIGURE 1 & 2]

FIG.1



FIG.2



4. Position the rod end in the lower mount and slide the bolt in. There are 2 sets of lower spacers provided. 99-16 FSDs have a 12mm bolt. 17-UP FSDs have 14mm bolt. Use the correct spacers for your vehicle. If using the 14mm bolt, offset the rod end toward the wheel. [Torque to factory spec] [FIGURE 3]

FIG.3



**VERIFY ALL FASTENERS ARE PROPERLY TORQUED BEFORE DRIVING VEHICLE.**

**RETORQUE ALL NUTS, BOLTS AND LUGS AFTER 100 MILES AND PERIODICALLY THEREAFTER.**

## 2.5 VS SERIES SHOCK & COILOVER TECHNICAL INFORMATION

### MAINTENANCE

ICON shock absorbers are a high quality rebuildable race style shock absorber designed for optimal performance. With a unit of this caliber on your vehicle, routine maintenance is required to keep them looking and operating in like new condition. Residual oil and assembly lube may be present at all seal paths from the factory out of the box and is considered normal. Pooling of oil however is not acceptable at any time and one should contact the iCON dealer where purchased.

**BELOW ARE GUIDELINES BASED ON HOW YOU USE YOUR VEHICLE BUT YOUR MILEAGE MAY VARY:**

#### STREET USE:

- Send in for factory servicing every 40,000 miles or if a leak develops, ride quality decreases, or they begin to make excessive noise.
- Remove any buildup of road salt, mud, or debris from shocks and coil springs anytime accrued
- Clean with mild soap and water with each oil change or anytime you notice build up.
- Wax the cylinders yearly with automotive wax to prevent corrosion.
- Check nitrogen pressure yearly. (252004 charge needle assembly available at any iCON distributor)
- Check bearings for excessive wear yearly.
- DO NOT apply any type of lube to the upper and lower bearings.

#### STREET/DIRT:

- Send in for factory servicing every 15,000 miles or if a leak develops, ride quality decreases, or they begin to make excessive noise.
- Clean with mild soap and water with each oil change, offroad trip, or anytime you notice build up.
- Wax the cylinders yearly with automotive wax to prevent corrosion.
- Check nitrogen pressure each dirt outing. (252004 charge needle assembly available at any iCON distributor)
- Check bearings for excessive wear yearly.
- DO NOT apply any type of lube to the upper and lower bearings.

#### DIRT USE:

- Send in for factory servicing every 1,000 miles.
- Check nitrogen pressure each outing. (252004 charge needle assembly available at any iCON distributor)
- Remove any buildup of mud or debris from shocks and coil springs after every outing.

#### SELF-SERVICE:

- Contact iCON for service kits & tools at (951) 689-4266.

### PRODUCT REGISTRATION

Please visit: <http://www.iconvehicledynamics.com/tech-support/registration/> to register your product.

### ICON VEHICLE DYNAMICS SHOCK ABSORBER WARRANTY

This shock absorber has a 1 year warranty against any manufacturer's defects. If a shock fails within the initial year of ownership, the shock must be shipped to iCON Vehicle Dynamics for inspection and service. If a shock is inspected and it has been determined the shock failed due to neglect, damage caused by improper installation or any other reason besides "normal wear and tear", the owner of said shock is responsible for all service costs. This includes labor, parts, and shipping.

iCON Vehicle Dynamics warrants to the original retail purchaser who owns the vehicle on which the product was originally installed. iCON Vehicle Dynamics does not warrant the product for finish, alterations, modifications and/or installation contrary to iCON Vehicle Dynamics instructions. iCON Vehicle Dynamics products are not designed, nor are they intended to be installed on vehicles used in race applications, for racing purposes or for similar activities. (A "race" is defined as any contest between two or more vehicles, or a contest of one or more vehicles against the clock, whether or not such contest is for a prize). This warranty does not include coverage for police or taxi vehicles, race vehicles, or vehicles used for government or commercial purposes. Also excluded from this warranty are sales outside of the United States of America and Canada.

iCON Vehicle Dynamics' obligation under this warranty is limited to the repair or replacement, at iCON Vehicle Dynamics' discretion, of the defective product. Any and all costs of removal, installation or re-installation, freight charges and incidental or consequential damages are expressly excluded from this warranty. Items that are subject to wear are not considered defective when worn and are not covered.

iCON Vehicle Dynamics components must be installed as a complete kit as shown in our current application guide. Any substitutions or exemptions of required components will immediately void the warranty. Some finish damage may happen to parts during shipping and is not covered under warranty.

This warranty is expressly in lieu of all other warranties expressed or implied. This warranty shall not apply to any product that has been improperly installed, modified or customized subject to accident, negligence, abuse or misuse.

To send a shock in for warranty please visit our website <http://www.iconvehicledynamics.com/tech-support/shock-service/>

7929 Lincoln Ave. Riverside, CA 92504  
 Phone: 951.689.ICON | Fax: 951.689.1016

PART #	DESCRIPTION
67030	2011-UP FSD FRONT 7" BOX KIT

### COMPONENTS INCLUDED

(2) 164008 05-UP FSD UPPER BRAKE LINE DROP (1) 164027 08-UP FSD TRACK BAR BRACKET (2) 164030 08-UP FSD SWAYBAR DROP BRACKET	(1) 164031 11-UP FSD STEERING STAB. DROP BRACKET (2) 167011 05-UP FSD FRONT BUMPSTOP SPACER (1) 168040 05-UP FSD DROP PITMAN ARM (1) 67020H HARDWARE KIT
---	---

### HARDWARE INCLUDED

#### 67020H HARDWARE KIT

(2) 605011 5/16-18 X .750 BOLT (2) 605012 3/8-16 SPLIT LOCK WASHER (4) 605101 3/8-16 X 1.000 BOLT	(4) 605133 3/8 FLAT WASHER (2) 605804 M8-1.25 X 120MM BOLT (1) 605900 1/8 X 2.000 COTTER PIN
---	--

#### 67031H HARDWARE KIT

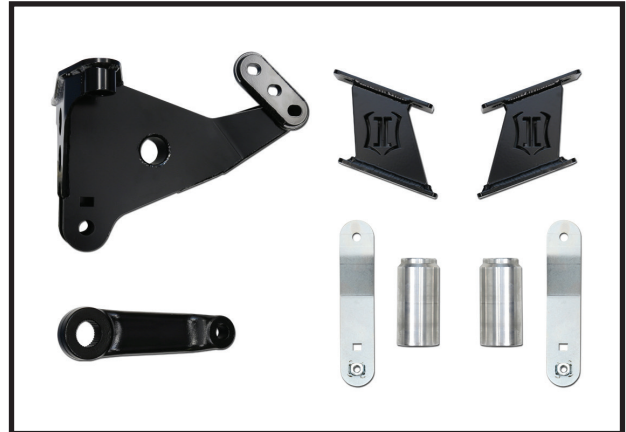
(1) 605101 3/8-16 X 1.000 BOLT (1) 605122 3/8-16 C-LOCK NUT (2) 605133 3/8" FLAT WASHER	(1) 605203 7/16-14 X 1.000 BOLT (1) 605220 7/16-14 NYLOCK NUT (2) 605230 7/16" FLAT WASHER
---	--

### TOOLS REQUIRED

JACK JACK STANDS BRASS HAMMER STEEL HAMMER PLIERS TORQUE WRENCH 3/8" SOCKET / WRENCH 1/2" SOCKET / WRENCH 5/8" SOCKET / WRENCH 3/4" SOCKET / WRENCH	15/16" SOCKET / WRENCH 10MM SOCKET / WRENCH 13MM SOCKET / WRENCH 15MM SOCKET / WRENCH 16MM SOCKET / WRENCH 18MM SOCKET / WRENCH 21MM SOCKET / WRENCH 24MM SOCKET / WRENCH 30MM SOCKET / WRENCH 46MM SOCKET / WRENCH
--	--

### TECH NOTES

1. REQUIRED KITS: ICON 4-LINK KIT PN: (61550 2011-16)  
 OR  
 RADIUS ARM DROP KIT PN: (64045 2011-16) AND CASTER CAM KIT PN: (63530)



### WARNING!

**\*\* READ ALL INSTRUCTIONS THOROUGHLY FROM START TO FINISH BEFORE BEGINNING INSTALLATION! IF THESE INSTRUCTIONS ARE NOT PROPERLY FOLLOWED SEVERE FRAME, SUSPENSION AND TIRE DAMAGE MAY RESULT TO THE VEHICLE!**

**\*\* ICON VEHICLE DYNAMICS RECOMMENDS THAT YOU EXERCISE EXTREME CAUTION WHEN WORKING UNDER A VEHICLE THAT IS SUPPORTED WITH JACK STANDS.**

**\*\* ICON VEHICLE DYNAMICS RECOMMENDS ALL INSTALLATION TO BE PERFORMED BY A PROFESSIONAL SHOP/SERVICE TECHNICIAN. PRODUCT FAILURE CAUSED BY IMPROPER INSTALLATION WILL NOT BE COVERED UNDER ICON'S WARRANTY POLICY.**

## INSTALLATION

- Using a properly rated jack, raise the front of the vehicle and support the frame rails with jack stands. Ensure the jack stands are secure and set properly before lowering the jack. NEVER WORK UNDER AN UNSUPPORTED VEHICLE. Remove front wheels.
- Remove the sway bar links from the sway bar using an 18mm socket/wrench. Leave them connected to the differential. [FIGURE 1]

FIG.1

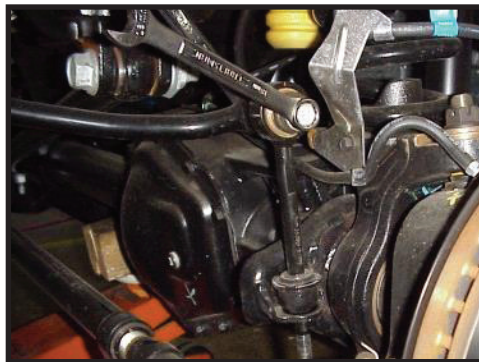
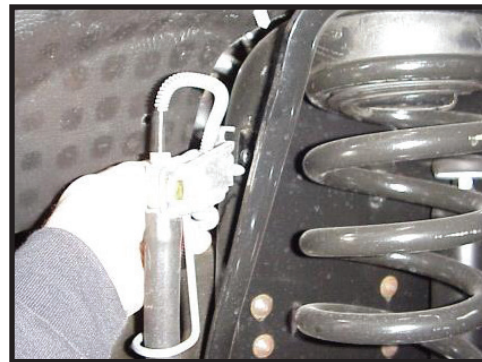


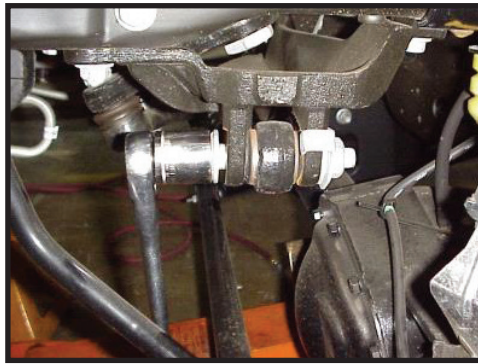
FIG.2



- Disconnect the upper brake line brackets from the frame using a 13mm socket/wrench and lower brake line brackets from the differential using a 10mm socket/wrench. [FIGURE 2]

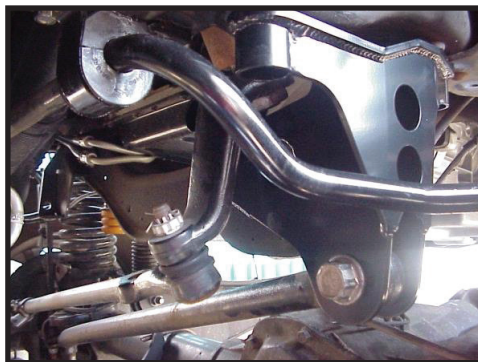
- 4.** On the driver side of the track bar, remove the nut and the upper track bar bolt using (2) 30mm socket/wrenches. [FIGURE 3]

FIG.3



- 5.** Support the axle with a floor jack and remove the front shocks. The shocks are limiting droop so make sure that the axle is supported or it will fall when the shocks are removed. (21mm socket/wrench, 18mm socket/wrench)
- 6.** Slowly lower the axle, the coils will unload from the mounts and can be removed. Be careful not to stretch or damage any lines connected to the axle or radius arms.
- 7.** Remove the stock track bar bracket: Remove the (2) bolts going up into the frame using an 18mm and the (3) nuts on the crossmember using a 21mm. Remove the stud plate from the crossmember and fully remove the track bar bracket.
- 8.** Refer to 4-Link instructions (61500 <2005-2010>) or (61550 <2011-2016>) and or radius arm kit (64040 <2005-2010>) or (64045 <2011-2016>) and install now.
- 9.** If using radius arm kit, caster cams are required. Refer to caster cam instructions (63530) and install now.
- 10.** If the coilover conversion (61950) has been purchased, refer to the coilover instructions and install now.
- 11.** Lower the axle just enough to install the new springs. Place the original rubber isolator on top of the new coil and install. Be careful to not stretch or damage any lines. Check the rotation/clocking of the coil to make sure it is properly seated in the lower spring perch.
- 12.** Lift the axle high enough to connect the shocks but be careful not to lift the truck off of its supports. Use the original bolt on the lower shock mount and tighten with an 18mm socket/wrench [Torque to factory spec]. Tighten the stem top nut using a 3/4" socket/wrench. (Refer to shock Instructions)
- 13.** Slowly lower the axle after the shocks are installed.
- 14.** Refer to pitman arm instructions (191002) and replace pitman arm now.
- 15.** Install the new track bar bracket using stock hardware. Hold the track bar bracket in position and insert the stud plate through the crossmember and bracket. Use a small amount of thread locker on threads, and install nuts using a 21mm. Use thread lock on frame bolts and install using an 18mm. [Torque to factory spec] [FIGURE 4]

FIG.4



- 16.** If an ICON adjustable track bar (64031) was purchased, refer to track bar installation instructions now.
- 17.** Remove the steering stabilizer from the factory frame bracket using a 15mm. Remove the bracket from the frame using an 18mm. Remove the steering stabilizer from the drag link using an 18mm, then use a ball joint separator or a hammer to break the taper loose and remove the stabilizer.
- 18.** Mount the stabilizer drop bracket to the frame and tighten using factory hardware and an 18mm [Torque to factory spec]. Connect the steering stabilizer to the new bracket using factory hardware [Torque to factory spec].
- 19.** Reconnect the track bar to the frame bracket using the factory hardware and (2) 30mm. You may have to raise or lower the axle to help line up the holes. [Torque to factory spec]

**20.** Pry the front bump stops out of the bump stop cup. Remove the bolt in the center of the cup using a 10mm. Install the bump stop spacer between the cup and the frame with the supplied bolt. The cup has a flat side on its outer flange. Rotate the flat side to be near the coil for added clearance. [Torque to factory spec] [FIGURE 5]

FIG.5



**21.** Push the bump stops back into the cups until they clip/snap into place.

**22.** Remove the sway bar from the frame using a 13mm.

**23.** Install sway bar drop brackets (164030) using the factory hardware and a 13mm. [Torque to factory spec] [FIGURE 6]

FIG.6

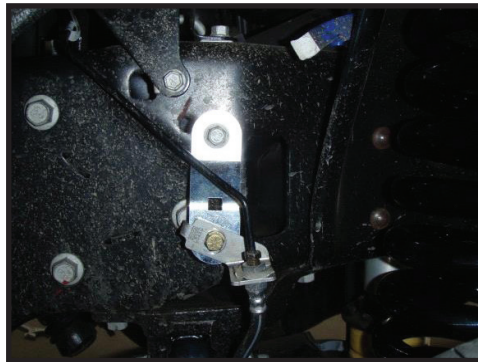


**24.** Using 3/8" hardware and a 9/16" socket/wrench, install the sway bar to the new drop brackets. [Torque to 33 ft-lbs]

**25.** Reconnect the sway bar to the stock links using an 18mm. [Torque to factory spec]

**26.** Install the upper brake line brackets using the factory bolts. This bracket uses the factory bolt on the top and a supplied 5/16" bolt on the bottom. Using (2) 1/2" wrenches to tighten. [Torque to 19 ft-lbs] Carefully bend and re-route the hard line. [FIGURE 7]

FIG.7

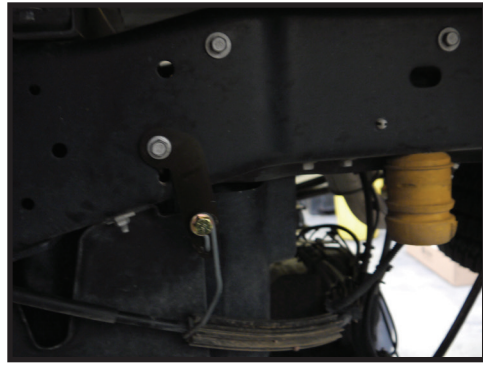


**27.** Remove parking brake bracket from the side of the frame using a 13mm socket/wrench. Mount the drop bracket using the factory hardware. Fasten the wire bracket to the drop bracket using the supplied 3/8" hardware and a 9/16" socket/wrench. [FIGURE 8 & 9]

FIG.8



FIG.9



**28.** Using a 16mm wrench, unscrew the vent hose fitting from the axle tube. Fasten the bracket to the axle tube using the vent hose fitting (tighten 1/8 turn past snug). Fasten the brake lines to the bracket using the supplied 7/16" hardware. [FIGURE 10 & 11]

FIG.10



FIG.11



**29.** If an ICON dual steering stabilizer kit (PN: 65000) has been purchased, refer to steering stabilizer instructions and install now.

**30.** Reinstall wheels and lower the vehicle to the ground. [Torque to factory spec]

**31.** Have the vehicle professionally aligned.

***VERIFY ALL FASTENERS ARE PROPERLY TORQUED BEFORE DRIVING VEHICLE.***

***RETORQUE ALL NUTS, BOLTS AND LUGS AFTER 100 MILES AND PERIODICALLY THEREAFTER.***

## **ICON VEHICLE DYNAMICS LIMITED LIFETIME WARRANTY**

ICON Vehicle Dynamics warrants to the original retail purchaser who owns the vehicle on which the product was originally installed. ICON Vehicle Dynamics does not warrant the product for finish, alterations, modifications and/or installation contrary to ICON Vehicle Dynamics instructions. ICON Vehicle Dynamics products are not designed, nor are they intended to be installed on vehicles used in race applications, for racing purposes or for similar activities. (A "race" is defined as any contest between two or more vehicles, or a contest of one or more vehicles against the clock, whether or not such contest is for a prize). This warranty does not include coverage for police or taxi vehicles, race vehicles, or vehicles used for government or commercial purposes. Also excluded from this warranty are sales outside of the United States of America and Canada.

ICON Vehicle Dynamics' obligation under this warranty is limited to the repair or replacement, at ICON Vehicle Dynamics' discretion, of the defective product. Any and all costs of removal, installation or re-installation, freight charges and incidental or consequential damages are expressly excluded from this warranty. Items that are subject to wear are not considered defective when worn and are not covered.

ICON Vehicle Dynamics components must be installed as a complete kit as shown in our current application guide. Any substitutions or exemptions of required components will immediately void the warranty. Some finish damage may happen to parts during shipping and is not covered under warranty.

This warranty is expressly in lieu of all other warranties expressed or implied. This warranty shall not apply to any product that has been improperly installed, modified or customized subject to accident, negligence, abuse or misuse.



**ICON VEHICLE DYNAMICS®**  
PERFORMANCE SUSPENSION SYSTEMS AND SHOCK ABSORBERS

7929 Lincoln Ave. Riverside, CA 92504 Phone: 951.689.ICON Fax: 951.689.1016  
[www.iconvehicledynamics.com](http://www.iconvehicledynamics.com)



**FOLLOW US ON FACEBOOK!**



7929 Lincoln Ave. Riverside, CA 92504  
 Phone: 951.689.ICON Fax: 951.689.1016

PART #	DESCRIPTION
67720CP	05-UP FSD 4WD 7" FRONT 2.5 VS PB CDCV PAIR

COMPONENTS INCLUDED	
(2) 164943C 05-UP FSD 7" FRONT 2.5 VS PB CDCV	(2) 611006 9/16" HD STEM BUSHING KIT
HARDWARE INCLUDED	
611006 HARDWARE KIT	
(2) HEAVY DUTY 9/16 ID STEM BUSHING (1) HEAVY DUTY 9/16 ID STEM WASHER (1) HEAVY DUTY 12MM ID STEM WASHER	(1) M12-1.25 NUT (1) M12-1.25 JAM NUT
TOOLS REQUIRED	
JACK JACK STANDS TORQUE WRENCH	17MM SOCKET / WRENCH 18MM SOCKET / WRENCH 19MM SOCKET / WRENCH 21MM SOCKET / WRENCH
TECH NOTES	
1. YOUR ICON SHOCK ASSEMBLIES COME FACTORY CHARGED TO 150 PSI. RELEASING NITROGEN PRESSURE MAY LEAD TO SHOCK MALFUNCTION AND REDUCED RIDE QUALITY. FAILURE CAUSED BY LOW NITROGEN PRESSURE IS NOT COVERED UNDER ICON'S WARRANTY POLICY.	



**WARNING!**

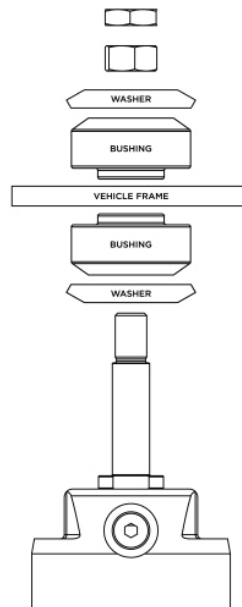
**\*\* READ ALL INSTRUCTIONS THOROUGHLY FROM START TO FINISH BEFORE BEGINNING INSTALLATION! IF THESE INSTRUCTIONS ARE NOT PROPERLY FOLLOWED SEVERE FRAME, SUSPENSION AND TIRE DAMAGE MAY RESULT TO THE VEHICLE!**

**\*\* ICON VEHICLE DYNAMICS RECOMMENDS THAT YOU EXERCISE EXTREME CAUTION WHEN WORKING UNDER A VEHICLE THAT IS SUPPORTED WITH JACK STANDS.**

**\*\* ICON VEHICLE DYNAMICS RECOMMENDS ALL INSTALLTION TO BE PERFORMED BY A PROFESSIONAL SHOP/SERVICE TECHNICIAN. PRODUCT FAILURE CAUSED BY IMPROPER INSTALLATION WILL NOT BE COVERED UNDER ICON'S WARRANTY POLICY.**

## INSTALLATION

- Using a properly rated jack, raise the front of the vehicle and support the frame rails with jack stands. Ensure the jack stands are secure and set properly before lowering the jack. NEVER WORK UNDER AN UNSUPPORTED VEHICLE. Remove the front wheels.
- Use a jack to support the axle and then remove the factory shock using a 17mm and 18mm socket/wrench.
- Install upper shock mount: Install stem hardware as seen in diagram. Install tall nut and fasten bushing assembly until 3-4 threads are exposed for the jam nut. Install nut and torque to 50 ft-lbs while holding with a 19mm wrench. Do not overtighten bushing assembly as this can lead to premature bushing wear. Failure caused by incorrect installation of bushings is not covered under ICON's warranty policy. [SEE DIAGRAM]



**4.** Install the lower shock mount: Install the wide heim spacer so that it orients the shock further away from the frame. Install the factory lower bolt using an 18mm socket/wrench. [Torque to factory spec] **[FIGURE 1]**

**FIG.1**



**5.** Install wheels and lower vehicle to the ground. [Torque to factory spec]

**6.** Have the vehicle professionally aligned.

***VERIFY ALL FASTENERS ARE PROPERLY TORQUED BEFORE DRIVING VEHICLE.***

***RETORQUE ALL NUTS, BOLTS AND LUGS AFTER 100 MILES AND PERIODICALLY THEREAFTER.***

## 2.5 VS SERIES SHOCK & COILOVER TECHNICAL INFORMATION

### MAINTENANCE

ICON shock absorbers are a high quality rebuildable race style shock absorber designed for optimal performance. With a unit of this caliber on your vehicle, routine maintenance is required to keep them looking and operating in like new condition. Residual oil and assembly lube may be present at all seal paths from the factory out of the box and is considered normal. Pooling of oil however is not acceptable at any time and one should contact the ICON dealer where purchased.

**BELOW ARE GUIDELINES BASED ON HOW YOU USE YOUR VEHICLE BUT YOUR MILEAGE MAY VARY:**

#### **STREET USE:**

- Send in for factory servicing every 40,000 miles or if a leak develops, ride quality decreases, or they begin to make excessive noise.
- Remove any buildup of road salt, mud, or debris from shocks and coil springs anytime accrued
- Clean with mild soap and water with each oil change or anytime you notice build up.
- Wax the cylinders yearly with automotive wax to prevent corrosion.
- Check nitrogen pressure yearly. (252004 charge needle assembly available at any ICON distributor)
- Check bearings for excessive wear yearly.
- **DO NOT** apply any type of lube to the upper and lower bearings.

#### **STREET/DIRT:**

- Send in for factory servicing every 15,000 miles or if a leak develops, ride quality decreases, or they begin to make excessive noise.
- Clean with mild soap and water with each oil change, offroad trip, or anytime you notice build up.
- Wax the cylinders yearly with automotive wax to prevent corrosion.
- Check nitrogen pressure each dirt outing. (252004 charge needle assembly available at any ICON distributor)
- Check bearings for excessive wear yearly.
- **DO NOT** apply any type of lube to the upper and lower bearings.

#### **DIRT USE:**

- Send in for factory servicing every 1,000 miles.
- Check nitrogen pressure each outing. (252004 charge needle assembly available at any ICON distributor)
- Remove any buildup of mud or debris from shocks and coil springs after every outing.

#### **SELF-SERVICE:**

- Contact ICON for service kits & tools at (951) 689-4266.

### PRODUCT REGISTRATION

Please visit: <http://www.iconvehicledynamics.com/tech-support/registration/> to register your product.

### ICON VEHICLE DYNAMICS SHOCK ABSORBER WARRANTY

This shock absorber has a 1 year warranty against any manufacturer's defects. If a shock fails within the initial year of ownership, the shock must be shipped to ICON Vehicle Dynamics for inspection and service. If a shock is inspected and it has been determined the shock failed due to neglect, damage caused by improper installation or any other reason besides "normal wear and tear", the owner of said shock is responsible for all service costs. This includes labor, parts, and shipping.

ICON Vehicle Dynamics warrants to the original retail purchaser who owns the vehicle on which the product was originally installed. ICON Vehicle Dynamics does not warrant the product for finish, alterations, modifications and/or installation contrary to ICON Vehicle Dynamics instructions. ICON Vehicle Dynamics products are not designed, nor are they intended to be installed on vehicles used in race applications, for racing purposes or for similar activities. (A "race" is defined as any contest between two or more vehicles, or a contest of one or more vehicles against the clock, whether or not such contest is for a prize). This warranty does not include coverage for police or taxi vehicles, race vehicles, or vehicles used for government or commercial purposes. Also excluded from this warranty are sales outside of the United States of America and Canada.

ICON Vehicle Dynamics' obligation under this warranty is limited to the repair or replacement, at ICON Vehicle Dynamics' discretion, of the defective product. Any and all costs of removal, installation or re-installation, freight charges and incidental or consequential damages are expressly excluded from this warranty. Items that are subject to wear are not considered defective when worn and are not covered.

ICON Vehicle Dynamics components must be installed as a complete kit as shown in our current application guide. Any substitutions or exemptions of required components will immediately void the warranty. Some finish damage may happen to parts during shipping and is not covered under warranty.

This warranty is expressly in lieu of all other warranties expressed or implied. This warranty shall not apply to any product that has been improperly installed, modified or customized subject to accident, negligence, abuse or misuse.

To send a shock in for warranty please visit our website <http://www.iconvehicledynamics.com/tech-support/shock-service/>

## ICON VEHICLE DYNAMICS

PERFORMANCE SUSPENSION SYSTEMS AND SHOCK ABSORBERS

7929 Lincoln Ave. Riverside, CA 92504 Phone: 951.689.ICON Fax: 951.689.1016  
[www.iconvehicledynamics.com](http://www.iconvehicledynamics.com)



FOLLOW US ON FACEBOOK!



DESCRIPTION
11-16 FORD SUPER DUTY 4 LINK KIT

COMPONENTS INCLUDED	
164501 (BOX 2 OF 3)	
(2) 164013 UPPER LINK WELDMENT (4) 167018 HEIM SPACER COM 16 X .750 X 2.800	(2) 295501 COM 16T BEARING (2) 605945 WHT-175 SPIRAL RETAINING RING
164502 (BOX 3 OF 3)	
(2) 164012 LOWER LINK WELDMENT (2) 167014 L/R ADJUSTER SLEEVE (4) 167017 HEIM SPACER JM16T X .750 X 2.80	(2) 295510 JM161T 1-14 RH ROD END (4) 605145 3/8-16 X 1.000 12 PT BOLT
164503 (BOX 1 OF 3)	
(1) 61550H 2011-UP FSD 4-LINK HARDWARE KIT (1) 164025 2011-UP FSD 4-LINK BRACKET (DRVR)	(1) 164026 2011-UP FSD 4-LINK BRACKET (PASS)
61550H HARDWARE KIT	
(6) 605200 7/16-14 X 1.500 BOLT (6) 605220 7/16-14 NYLOCK NUT (12) 650230 7/16 FLAT WASHER (2) 605601 3/4-10 X 5.500 BOLT (2) 605602 3/4-10 X 5.000 BOLT	(4) 605603 3/4-10 X 1.000 BOLT (4) 605620 3/4-10 NYLOCK NUT (8) 605630 3/4 FLAT WASHER (4) 605631 3/4 SPLIT LOCK WASHER (2) 605925 PLASTIC PUSH IN CLIP - ABS HOLDER
TOOLS REQUIRED	
JACK JACK STANDS TORQUE WRENCH DRILL 7/16" DRILL BIT	5/8" SOCKET / WRENCH 1 1/8" SOCKET / WRENCH 15MM SOCKET / WRENCH 24MM SOCKET / WRENCH 27MM SOCKET / WRENCH
TECH NOTES	
N/A	

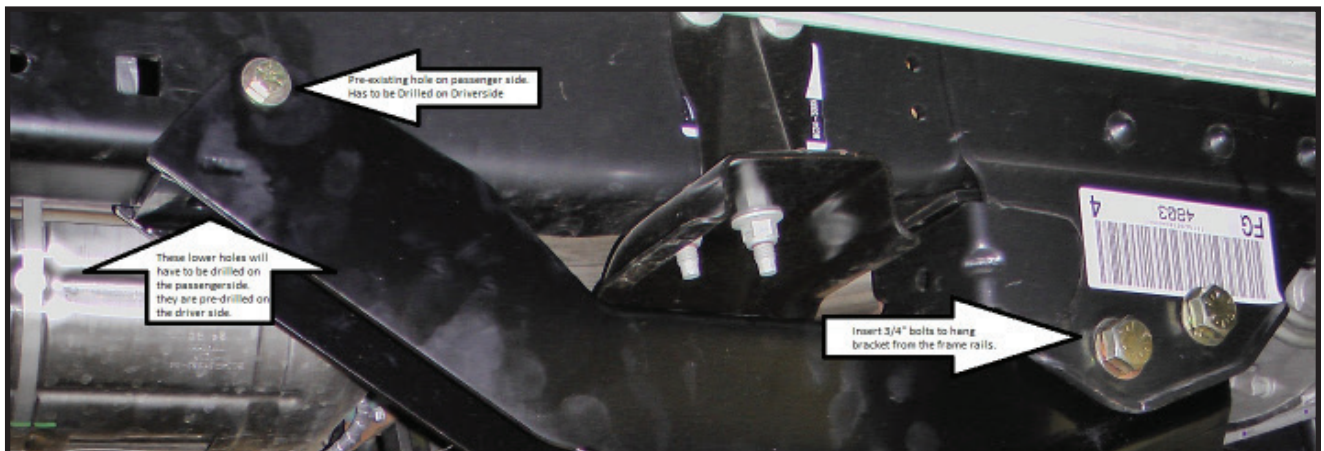


WARNING!
<p><b>** READ ALL INSTRUCTIONS THOROUGHLY FROM START TO FINISH BEFORE BEGINNING INSTALLATION! IF THESE INSTRUCTIONS ARE NOT PROPERLY FOLLOWED SEVERE FRAME, SUSPENSION AND TIRE DAMAGE MAY RESULT TO THE VEHICLE!</b></p> <p><b>** ICON VEHICLE DYNAMICS RECOMMENDS THAT YOU EXERCISE EXTREME CAUTION WHEN WORKING UNDER A VEHICLE THAT IS SUPPORTED WITH JACK STANDS.</b></p> <p><b>** ICON VEHICLE DYNAMICS RECOMMENDS ALL INSTALLTION TO BE PERFORMED BY A PROFESSIONAL SHOP/SERVICE TECHNICIAN. PRODUCT FAILURE CAUSED BY IMPROPER INSTALLATION WILL NOT BE COVERED UNDER ICON'S WARRANTY POLICY.</b></p>

## INSTALLATION

- Using a properly rated jack, raise the front of the vehicle and support the frame rails with jack stands. Ensure the jack stands are secure and set properly before lowering the jack. NEVER WORK UNDER AN UNSUPPORTED VEHICLE. Remove the front wheels.
- Some models have a transfer case skid plate that must be removed first. Use a 15mm socket/wrench to loosen and then remove the nut clips from the frame.
- Support the front axle and radius arm with a jack, and unbolt the radius arm from the driver side using a 24mm and 27mm socket/wrench. Leave the passenger side radius arm attached to keep the axle from rotating.
- Position the 4-link bracket with the weld nuts into the stock radius arm pocket. The welded nuts will line up with the upper forward hole in the stock radius arm pocket. Loosely install two (605603) bolts with split lock washers (605631) into the 4-link brackets. [FIGURE 1]

FIG.1



**5.** Rotate the bracket up until it meets the frame. Install two (605200) bolts with washers (605230) and nylock nuts (605220) through the two holes in the bottom of the frame rail. [Torque to 50 ft-lbs]

**6.** The horizontal hole in the bracket that hits the side of the frame will need to be drilled to 7/16". Use the bracket as a guide to center punch the holes, then proceed to drill holes. Install a (605200) bolt with washer (605230) and nut (605220). [Torque to 50 ft-lbs]

**7.** On the passenger side the hole in the side of the frame is there, but the holes in the bottom will need to be drilled. After installing the (605603) bolts, the bracket can be hung from the frame by installing one (605200) bolt through the side hole. [Torque to 50 ft-lbs]

**8.** Using the bracket as a guide, center punch and drill the two holes on the bottom of the frame to 7/16". Install both (605200) bolts. [Torque to 50 ft-lbs] [FIGURE 2 & 3]

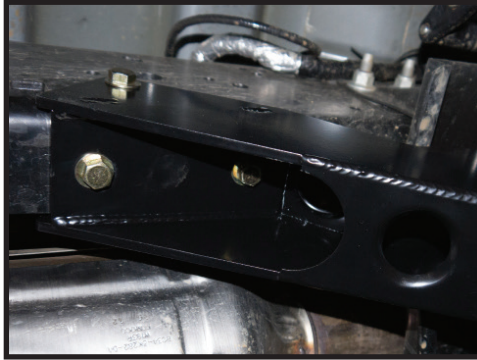


FIG.2



FIG.3

**9.** Install the new upper link (164501) on the frame bracket using the supplied (605601) bolt. Be sure the ABS mounting hole is facing up then install the axle side of the link using the stock bolt. Leave the bolts loose for now. [FIGURE 4]



FIG.4

**10.** Next install the lower link (164502) on the axle using the stock radius arm bolt. This is the longer link with the rod end, collar, and double pinch bolts. First be sure the double pinch bolts are in, but loose so the adjustable collar can turn freely. Install the link on the frame/bracket using the supplied (605602) bolt. Swing the lower link into position and align the lowest 4-link frame bracket hole with the lower link. Insert the (605602) bolt with a washer (605630), and install a washer (605630) and nylock nut (605620) on the other side.

**11.** Leave the pivot bolts loose while repeating steps for the passenger side installation.

**12.** Now you should have both of the frame brackets and all four links installed loosely on the vehicle. Using a 1 1/8" socket/wrench tighten all four 3/4" bolts [Torque to 260 ft-lbs]. Use a 24mm and a 27mm socket/wrench to tighten factory bolts at the axle. [Torque to factory spec]. [FIGURE 5]



FIG.5

**13.** Press the plastic tab (605925) into the outer hole on each upper link. Place the stock ABS wire into the plastic holder and close, locking the ABS wire in place.

**14.** Install the front wheels and lower vehicle to the ground. [Torque to factory spec]

**15.** Loosen the pinch bolts on the lower links. Adjust the length of the link as needed for alignment. Move the slit in the collars to match up with the slit in the link. Tighten the (4) 3/8" 12 point bolts by alternating back and forth between the bolts. [Torque to 35 ft-lbs]

**VERIFY ALL FASTENERS ARE PROPERLY TORQUED BEFORE DRIVING VEHICLE.**

**RETORQUE ALL NUTS, BOLTS AND LUGS AFTER 100 MILES AND PERIODICALLY THEREAFTER.**

### **ICON VEHICLE DYNAMICS LIMITED LIFETIME WARRANTY**

ICON Vehicle Dynamics warrants to the original retail purchaser who owns the vehicle on which the product was originally installed. ICON Vehicle Dynamics does not warrant the product for finish, alterations, modifications and/or installation contrary to ICON Vehicle Dynamics instructions. ICON Vehicle Dynamics products are not designed, nor are they intended to be installed on vehicles used in race applications, for racing purposes or for similar activities. (A "race" is defined as any contest between two or more vehicles, or a contest of one or more vehicles against the clock, whether or not such contest is for a prize). This warranty does not include coverage for police or taxi vehicles, race vehicles, or vehicles used for government or commercial purposes. Also excluded from this warranty are sales outside of the United States of America and Canada.

ICON Vehicle Dynamics' obligation under this warranty is limited to the repair or replacement, at ICON Vehicle Dynamics' discretion, of the defective product. Any and all costs of removal, installation or re-installation, freight charges and incidental or consequential damages are expressly excluded from this warranty. Items that are subject to wear are not considered defective when worn and are not covered.

ICON Vehicle Dynamics components must be installed as a complete kit as shown in our current application guide. Any substitutions or exemptions of required components will immediately void the warranty. Some finish damage may happen to parts during shipping and is not covered under warranty.

This warranty is expressly in lieu of all other warranties expressed or implied. This warranty shall not apply to any product that has been improperly installed, modified or customized subject to accident, negligence, abuse or misuse.



**ICON VEHICLE DYNAMICS®**  
PERFORMANCE SUSPENSION SYSTEMS AND SHOCK ABSORBERS

7929 Lincoln Ave. Riverside, CA 92504 Phone: 951.689.ICON Fax: 951.689.1016  
[www.iconvehicledynamics.com](http://www.iconvehicledynamics.com)



**FOLLOW US ON FACEBOOK!**

