



2.5" LEVELING KIT

(2015-2023+ F-150)

INSTALLATION INSTRUCTIONS

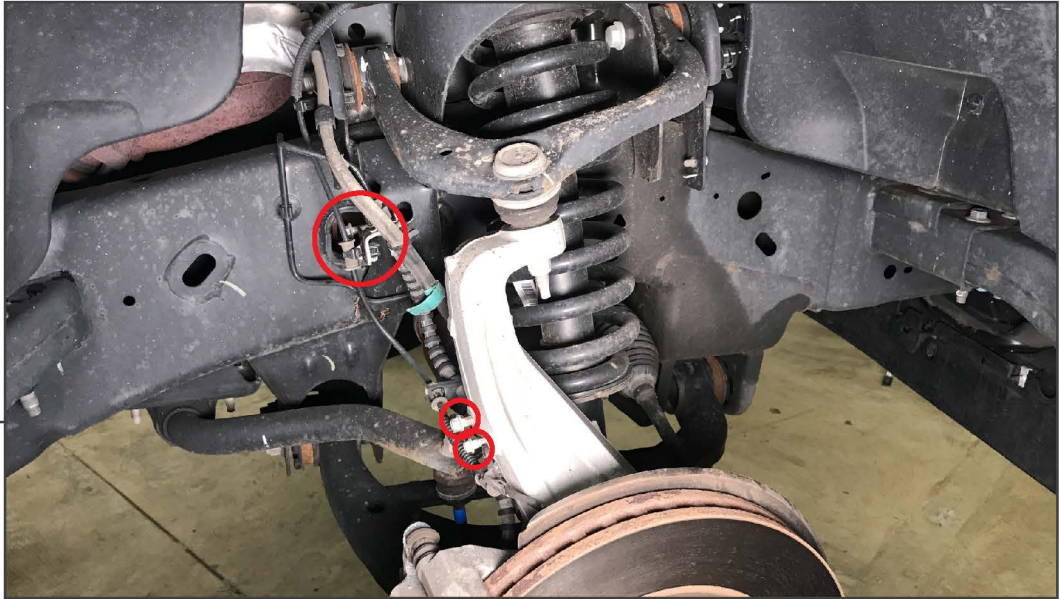
CONTENTS

(2) Level Kit Strut Spacers
(12) M10 Flange Nuts

TOOLS REQUIRED

Floor Jack and Jack Stands
8, 10, 15, 18, 21, 22mm Sockets
Socket Wrench
Pry Bar
Hammer

SKU # T527672



STEP 1

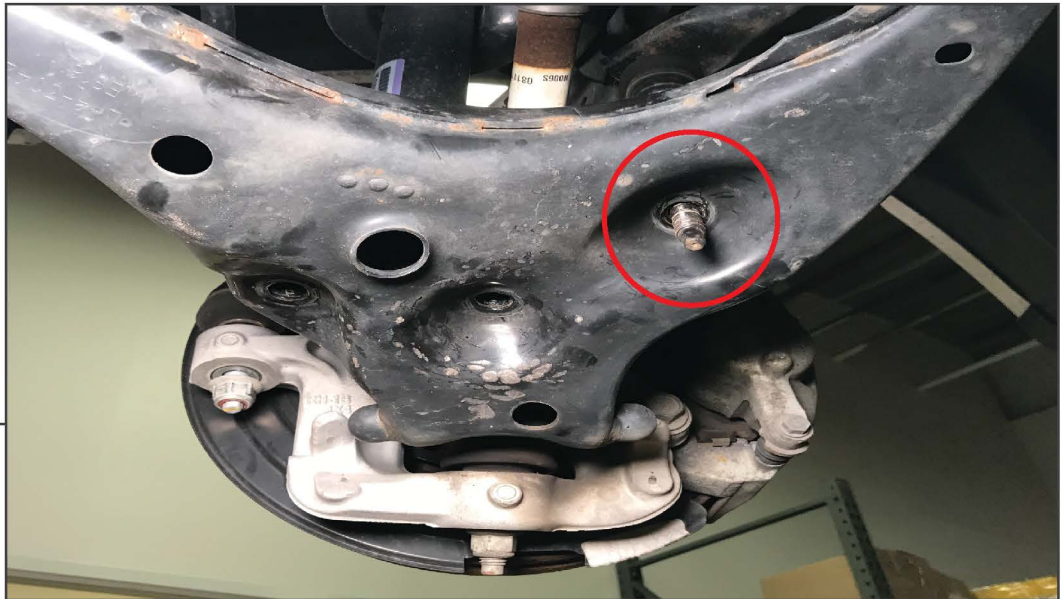
Begin by safely lifting and supporting the front of the vehicle with a jack and jack stands. Using a 22mm socket or lug nut socket, remove the front wheels.

Locate and remove the (2) 10mm bolts and (1) 8mm bolt securing the brake lines and ABS wiring to the knuckle.



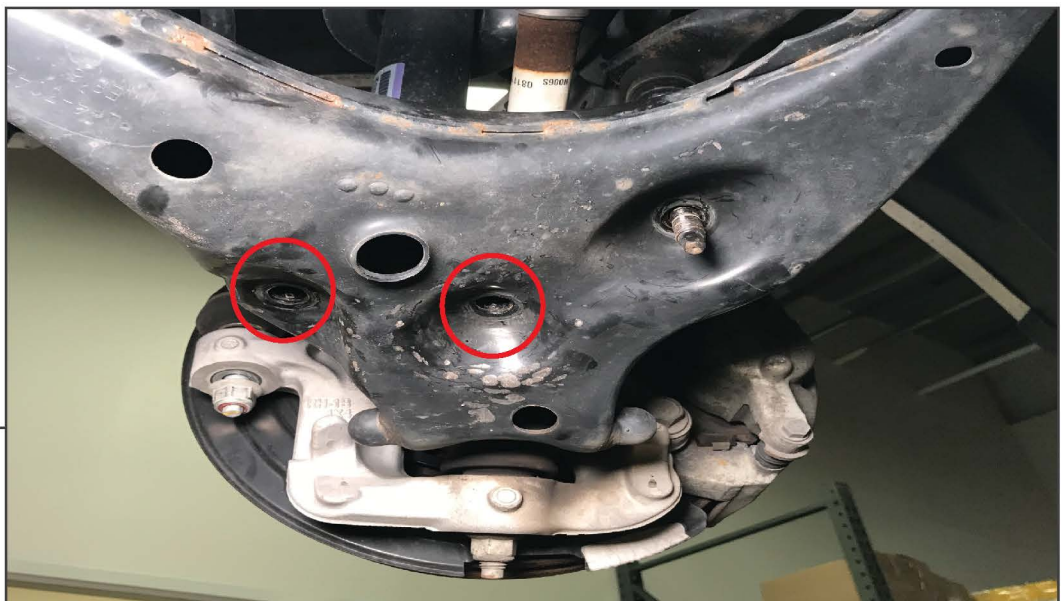
STEP 2

Using a 21mm socket, loosen but do not remove the tie rod nut. Leave the nut on the tie rod to protect the threads. Using a hammer, strike the knuckle to separate the tie rod from the knuckle. Then, remove the nut from the tie rod and the tie rod from the knuckle.



STEP 3

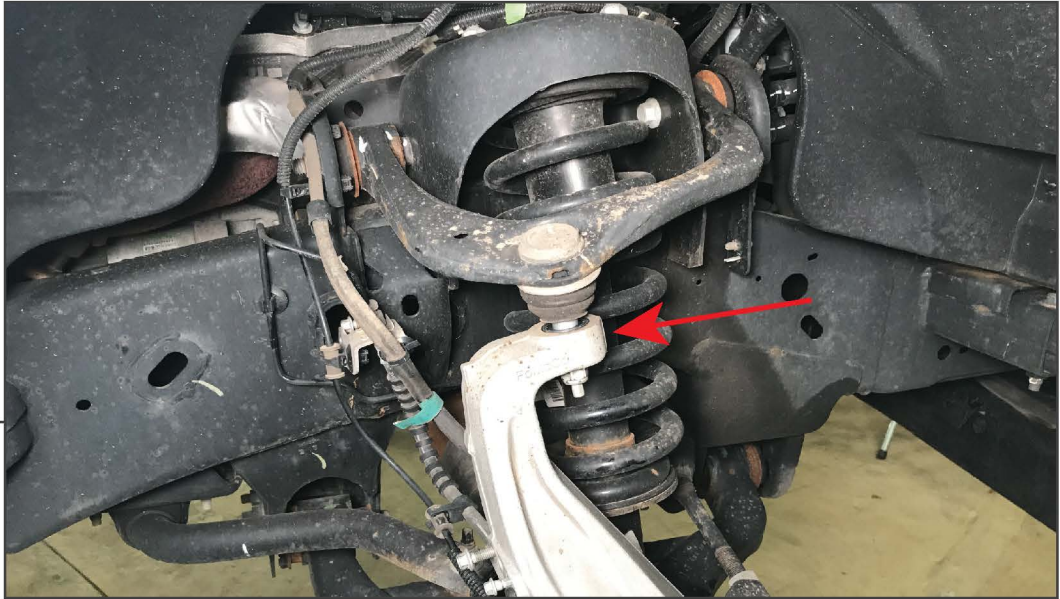
Using a 18mm socket, remove the nut securing the sway bar end link to the lower control arm.



STEP 4

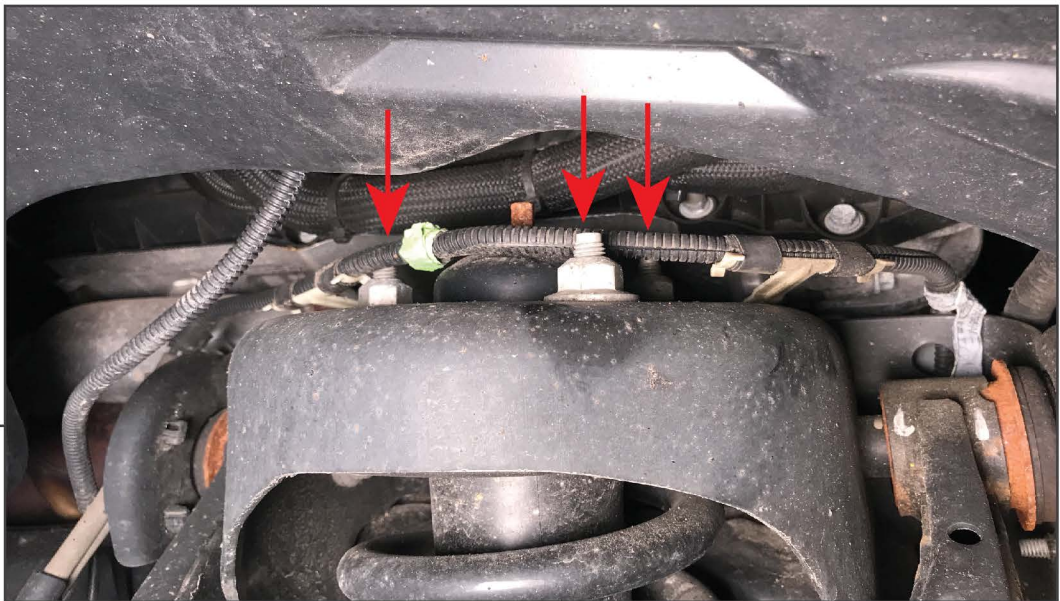
Using a 18mm socket, remove the (2) nuts securing the strut assembly to the lower control arm. Once the nuts are removed, the strut studs will remain. These studs are pressed into the strut from the factory and will need to be removed to make removing the strut easier. Using a hammer, hammer the studs up and out of the strut.

**Removing the studs requires patience, they are not easy to hammer out.



STEP 5

Using a 18mm socket, loosen the nut securing the upper ball joint to the knuckle. Using a hammer, strike the knuckle to separate the ball joint from the knuckle. Remove the nut to separate the control arm from the knuckle. This will allow additional space when removing the strut assembly from the vehicle.



STEP 6

Using a 14mm socket, remove the (3) nuts securing the top of the strut to the vehicle.

Use a pry bar to encourage suspension component movement to allow the strut to be removed. Remove the strut assembly from the vehicle and place on a workable surface.

STEP 7



Secure the included strut spacer to the top of the vehicle strut using the included (3) M10 flange nuts. Tighten the nuts to 52 ft. lbs.

**The spacer is directional and will only install in one orientation.

STEP 8



**Suspension
Torque Specifications**

- Upper Strut Nuts: 52 ft. lbs.
- Lower Strut Bolts: 66 ft. lbs.
- Upper Ball Joint: 46ft. lbs.
- Sway Bar End Link Nut: 59 ft. lbs.
- Tie Rod End: 76 ft. lbs.
- Wheel & Tire: 150 ft. lbs.

To re-install the strut to the vehicle, turn the strut 180* from the original mounting orientation. Fit the strut assembly back into the vehicle, and follow steps 1-6 in reverse order for installation.