

advanced FLOW engineering Momentum Air Intake

Instruction Manual P/N: 51-73114 / 54-73114 / 75-73114

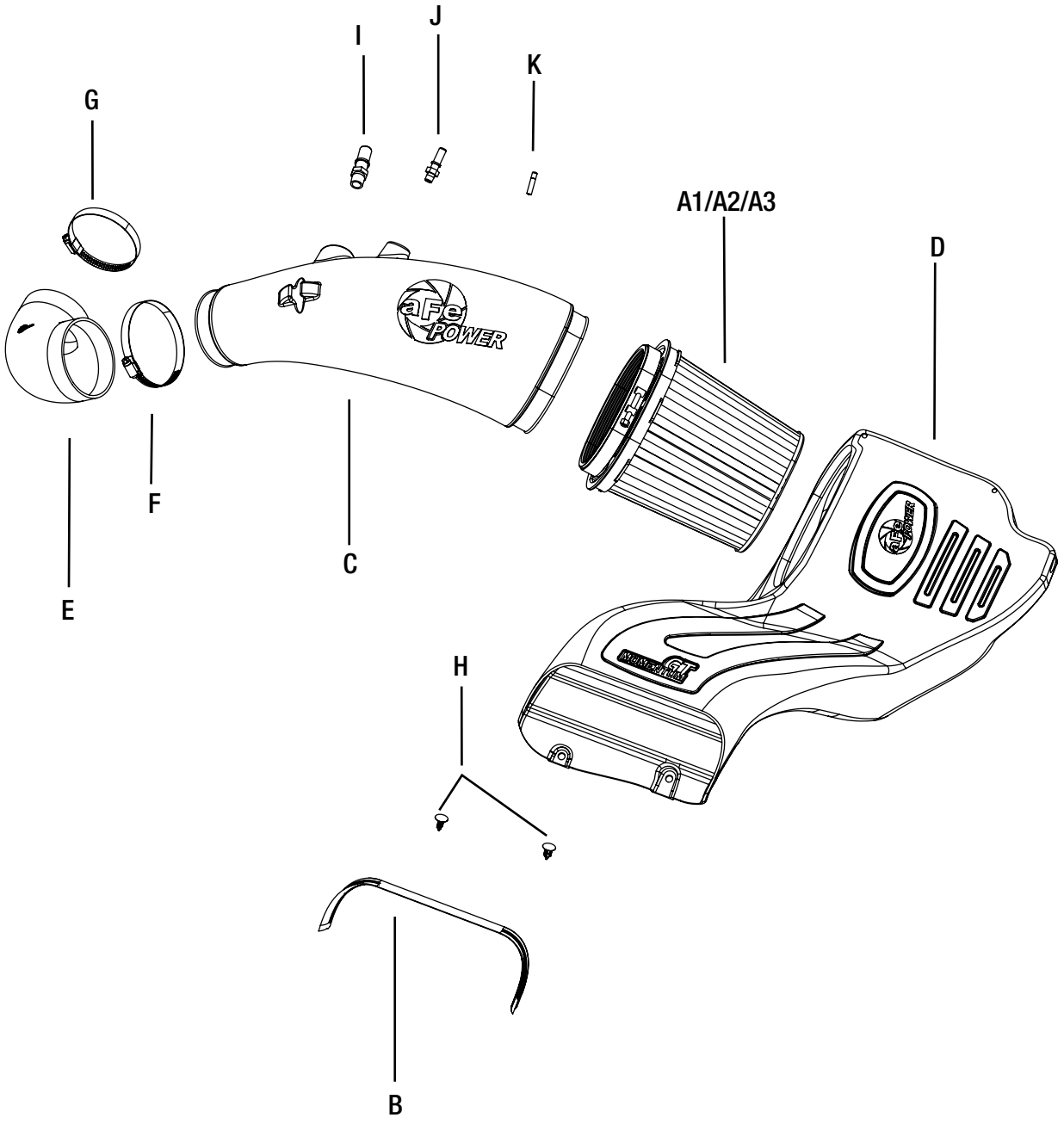
Make: **Ford** Model: **F-150** Year: **2015-2018** Engine: **V8-5.0L**
(CARB exempt 15-16 under D-550-28 only)



- Please read the entire instruction manual before proceeding.
- Ensure all components listed are present.
- If you are missing any of the components, call customer support at 951-493-7100.
- Ensure you have all necessary tools before proceeding.
- Do not attempt to work on your vehicle when the engine is hot.
- Disconnect the negative battery terminal before proceeding.
- Retain factory parts for future use.

Label	Qty.	Description	Part Number
A1	1	Air Filter (Pro DRY S)	21-91092 (51-73114)
A2	1	Air Filter (Pro 5R)	24-91092 (54-73114)
A3	1	Air Filter (Pro-GUARD 7)	72-91092 (75-73114)
B	1	Seal, Trim 7/16" (15.5")	05-00072
C	1	Tube	05-73114B1
D	1	Housing	05-73112B2
E	1	Coupling, Elbow Reducer	05-01344
F	1	Clamp 2-1/2" - 4-1/2"	03-50006
G	1	Clamp 2-13 /16" - 3-3/4"	03-50008
H	2	Retainer Clip	05-01350
I	1	Fitting, Vent Tube (large)	05-01339
J	1	Fittng, Vent Tube (small)	05-01338
K	1	Thread Locker	03-50162

Tools needed: 8mm and 10mm nut driver or socket, 13mm socket, and panel popper.



**Figure A****Refer to Figure A for Steps 1-4**

Step 1: Un-snap coolant hose from tubes.

Step 2: Disconnect the two crankcase breather lines.

Step 3: Untighten the two clamps on the air intake tube. Pull the tube out of the truck.

Step 4: Remove the screw and the two plastic rivets securing the housing, then pull the factory air box out of the truck.

REMOVAL



Figure B

Refer to Figure B for Steps 5-6

Step 5: Transfer the grommet from the factory air box to the aFe air box.

Step 6: Install the furnished seal trim on the top edge of the aFe housing.



Figure C

Refer to Figure C for Steps 7-9

Step 7: Install the aFe housing into the truck by pushing it into the factory mounting grommets.

Step 8: Re-install the factory screw removed in step 3, inside the aFe housing.

Step 9: Secure the housing with the two furnished plastic rivets.



Figure D

Refer to Figure D for Steps 10-11

Step 10: Slide aFe filter inside the housing.

Step 11: Install couplings and clamps onto throttle body. Do not tighten clamps yet.



Figure E

Refer to Figure E for Step 12

Step 12: Screw the provided vent fittings into the aFe tube. Add some of the furnished threadlocker to guarantee a perfect seal.



Figure F

Refer to Figure F for Steps 13-16

Step 13: Install the aFe tube in the truck by sliding the tube into the coupling then into the air filter.

Step 14: Align tube correctly then tighten all clamps.

Step 15: Reconnect the crankcase breather lines and secure coolant hose on tube.

Step 16: Make sure all clamps and screws are tight.

NOTE: Retighten all connections after approximately 100-200 miles.

Place the included CARB EO sticker on or near the device on a smooth, clean surface.

EO identification is required to pass the smog inspection.



PAGE LEFT BLANK INTENTIONALLY

PAGE LEFT BLANK INTENTIONALLY



PAGE LEFT BLANK INTENTIONALLY

PAGE LEFT BLANK INTENTIONALLY



Pro DRY S Air Filter



P/N: 21-91092

Pro 5R Air Filter



P/N: 24-91092

Pro-GUARD 7 Air Filter



P/N: 72-91092

Pre-Filter



P/N: 28-10283

Pro DRY S Restore Kit



P/N: 90-59999

Blue Squeeze Restore Kit



P/N: 90-50501

Pro-GUARD 7 Restore Kit



P/N: 90-50500

Cat-Back Exhaust System



P/N: 49-43073-P (Pol. Tip)
49-43073-B (Blk. Tip)

Cat-Back Exhaust System



P/N: 49-43074-P (Pol. Tips)
49-43074-B (Blk. Tips)

SCORCHER PRO Tune



P/N: 77-33010

Headers & Y-Pipe



P/N: 48-43015-YC (Street)
48-43015-YN (Race)

Throttle Body Spacer



P/N: 46-33010

To purchase any of the items above, view airflow charts, dyno graphs, photos, and video; please go to aFepower.com.

Warranty

General Terms:

- aFe warrants their products to be free from manufacturer's defects due to workmanship and material.
- This warranty applies only to the original purchaser of the product and is nontransferable.
- Proof of purchase of the aFe product is required for all warranty claims.
- Warranty is valid provided aFe instructions for installation and/or cleaning were properly followed.
- Proper maintenance with regular inspections of product is required to insure warranty coverage.
- Damage due to improper installation, abuse, unauthorized repair or alteration is not warranted.
- Incidental or consequential damages or cost, including installation and removal of part, incurred due to failure of aFe product is not covered under this warranty.
- All warranty is limited to the repair and/or replacement of the aFe part. To request Return Goods Authorization ("RGA"), email RGA@afepower.com or call (951)493-7100. Upon receipt of the RGA, you must return the product to the address provided in the RGA, freight prepaid and accompanied with a dated proof of purchase and the RGA. Upon receipt of the defective product and upon verification of proof of purchase, aFe will either repair or replace the defective product within a reasonable time, not to exceed thirty days.

Product Category	P/N Prefix	Warranty duration
Direct OE Replacement Filters	10, 11, 30, 31, 71, 73	Life of the vehicle
Racing Filters	18	1 year
Universal	21, 24, 72	2 years
Air Intake Systems	50, 51, 54, 55, 75	2 years
Exhaust Systems	49	2 years
Intercoolers & Intercooler Tubes	46-2	2 years
Intake Manifolds	46-1	2 years
Differential Cover	46-7	Life of the vehicle
Exhaust Manifolds	46	2 years
Throttle Body Spacers	46-3	2 years
Fluid Filters	44	90 days
Pre-Filters	28	2 years
Heavy Duty OE Replacement	70	2 years
PowerSports OE Replacement	81, 87	2 years
PowerSports Intake Systems	85	2 years

No other warranty expressed or implied applies nor is any person or advanced FLOW engineering authorized to assume any other warranty. Some States do not allow the exclusion or limitation of incidental or consequential damages or do not allow limitations on how long an implied warranty lasts, so the above limitations or exclusions may not apply to you. This warranty gives you specific legal rights, and you may also have other rights which vary from State to State.



advanced FLOW engineering, inc.
252 Granite Street Corona, CA 92879
TEL: 951.493.7155 • TECH: 951.493.7100
E-Mail: Tech@aFepower.com