

Installation Manual

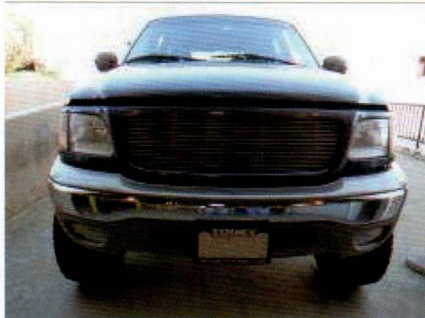
PART NUMBER FR396



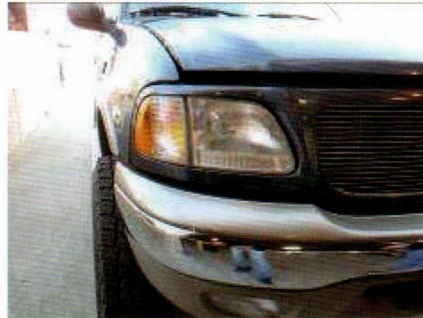
**Read complete instructions
before installation!
Improper installation may
void warranty**

Description: Head Light

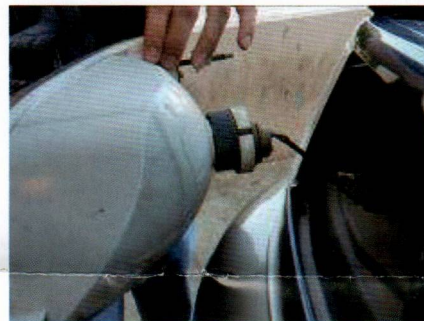
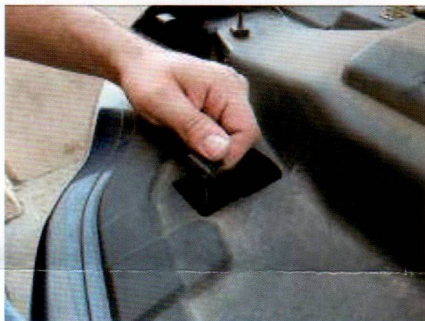
Application: 1997-2003 Ford F150 / Expedition



Tools needed: No tools
needed



Remove the two headlight
locking pins.



Pull out the headlight from the
vehicle and unplug the
headlight wire harness.



Take out the new headlight
from the box.



Plug the headlight wire
harness into the new crystal
headlight.



Install the new headlight onto
the vehicle.

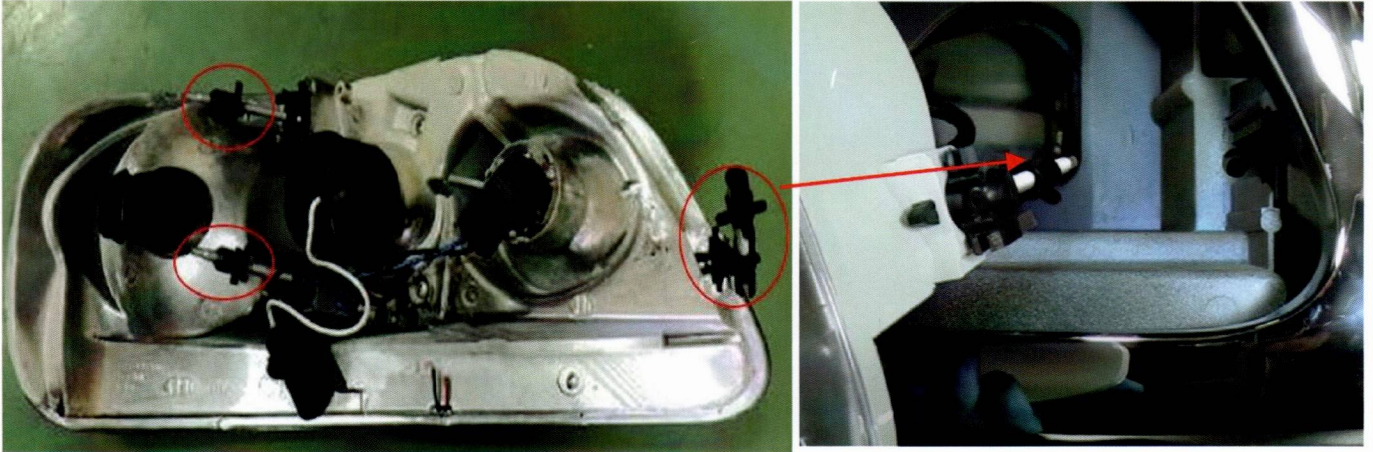


Test all functions for proper
installation before driving.

FR396 Adjustor Instruction

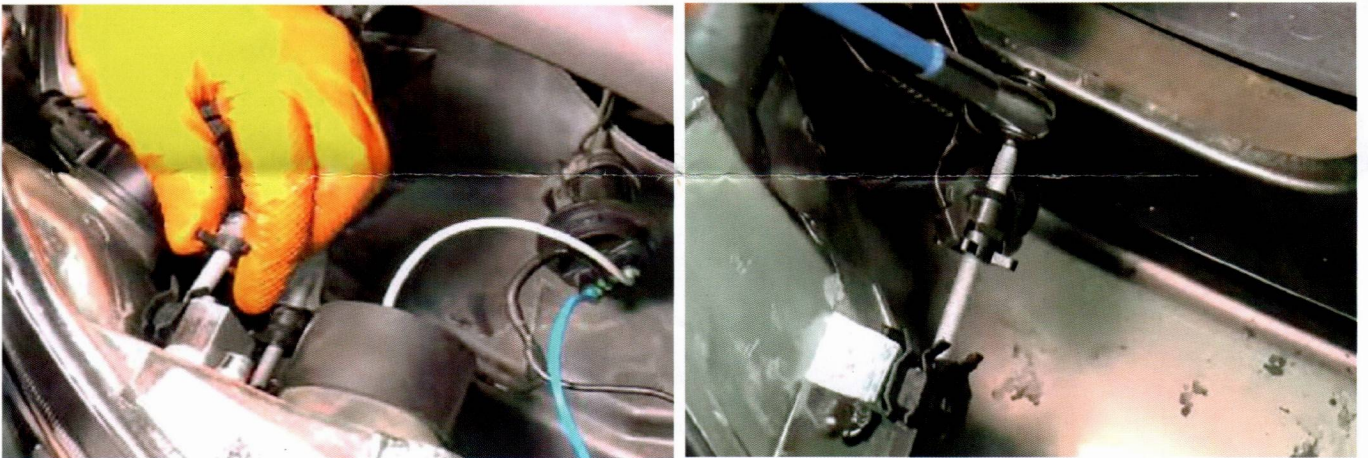
Step 1

Compare the position of the black knobs of three adjusting rods with OEM headlights. Adjust the knobs to the same position with OEM headlights' as possible.



Step 2

The knobs can be twisted by hand or using adjustment tools.

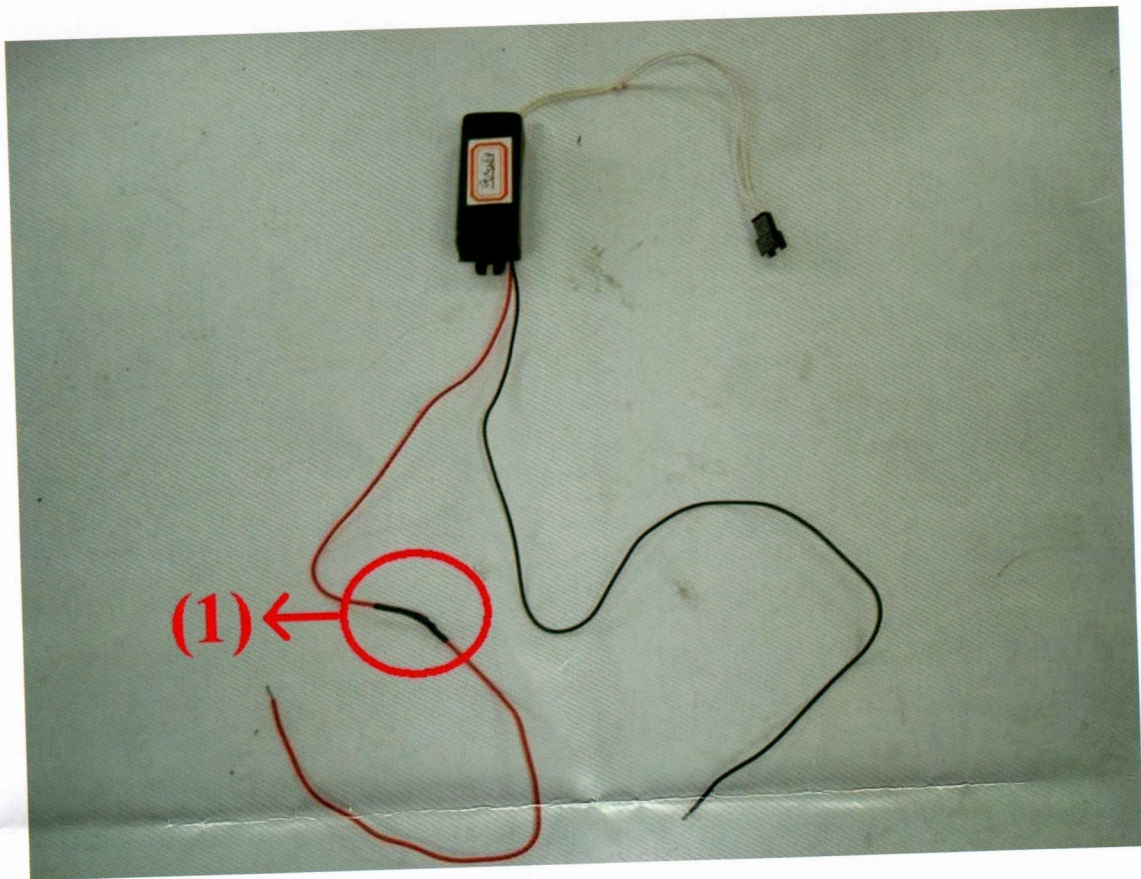


Step 3

Install the headlights without fastening mounting bolts first and check if it fits perfectly. If there is a gap, follow Step 2 to adjust the position of the knobs of the adjusting rods. Fasten the mounting bolts after confirming the headlight fits perfectly.



Z4021 CCFL線組裝配說明書 INSTRUCTIONS OF CCFL WIRE INSTALLATION



1. 將圖之黑線接於車體線之行車燈負極上

CONNECT THE BLACK WIRE WITH THE NEGATIVE POLE OF THE DRIVING LIGHT

2. 將圖之紅線接於車體線之行車燈正極上

CONNECT THE RED WIRE WITH THE POSITIVE POLE OF THE DRIVING LIGHT

注意：ATTENTION

請勿損毀電阻部位 (1) ，否則將導致無法作動

PLEASE DON'T DESTROY THE ELECTRIC RESISTANCE)THE CIRCLE PART(

OR IT WILL UNABLE WORK.