



COILOVER KIT

(2009-2014 4WD F-150, Excluding Raptor)

INSTALLATION INSTRUCTIONS

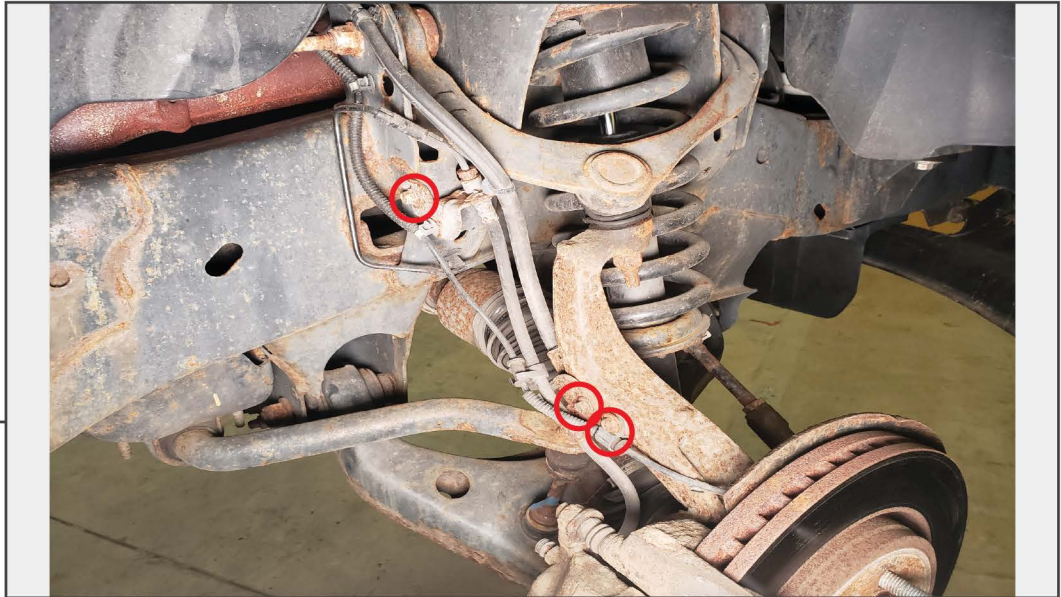
CONTENTS

- (2) Adjustable Front Coilover Shocks
- (2) Adjustable Rear Shocks
- (2) Lower Coilover Shock Bolts
- (2) Lower Coilover Shock Nuts
- (4) Large Inner Bushings
- (4) Small Outer Bushings
- (6) Upper Coilover Shock Mount Nuts
- (1) Spanner Wrench

TOOLS REQUIRED

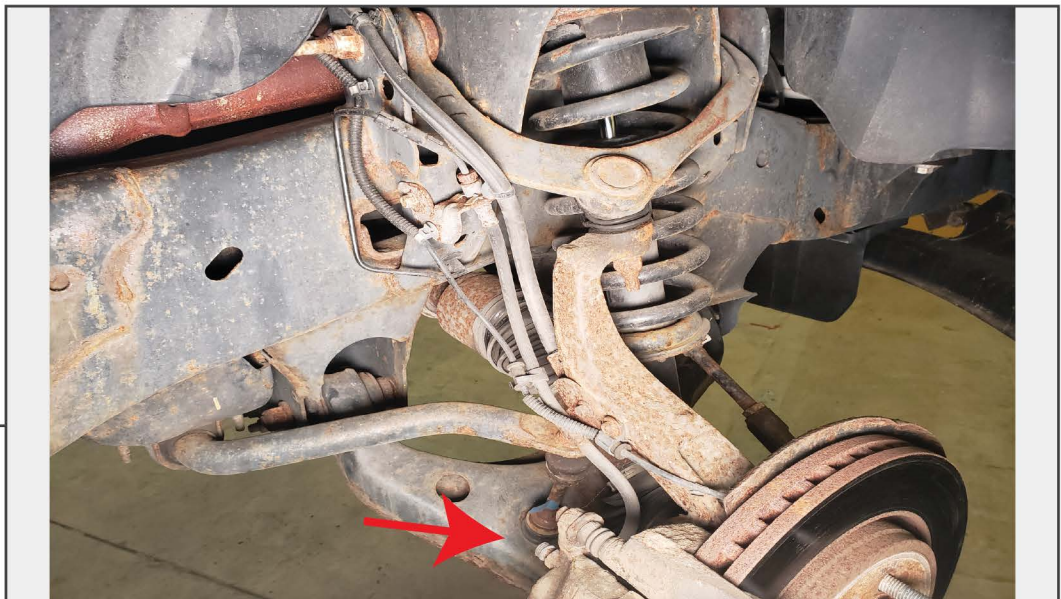
SKU # T543350

**Front Coilover
STEP 1**



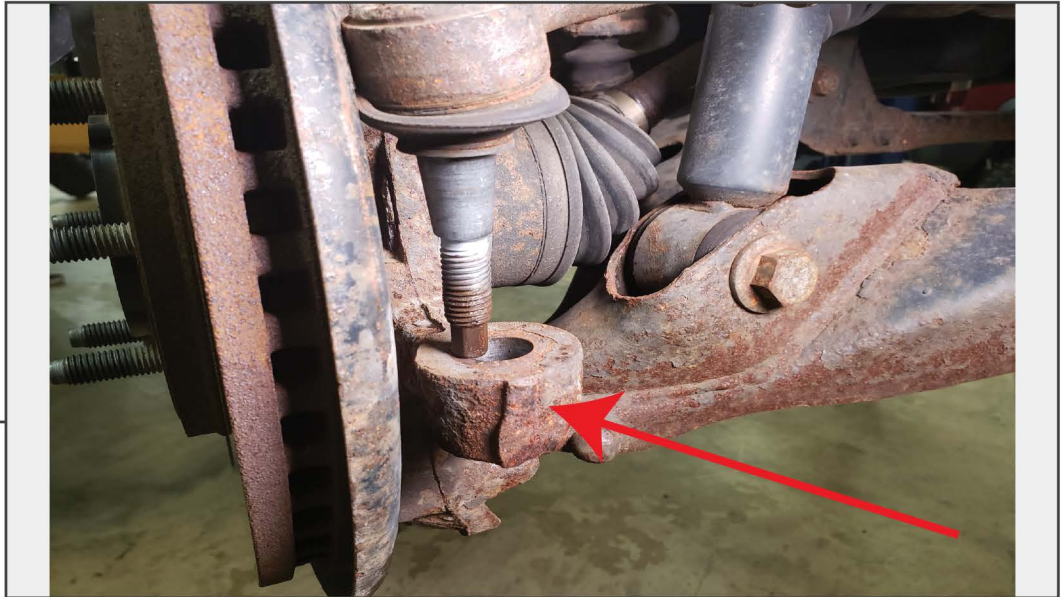
Begin by raising and supporting the front of the vehicle with a jack and jack stands. Using a 21mm socket or lug nut socket, remove the front wheels. Locate and remove the (2) 10mm bolts and (1) 8mm bolt securing the brake lines and abs wiring to the knuckle.

STEP 2



Using a 18mm socket, remove the nut from the sway bar end link.

STEP 3

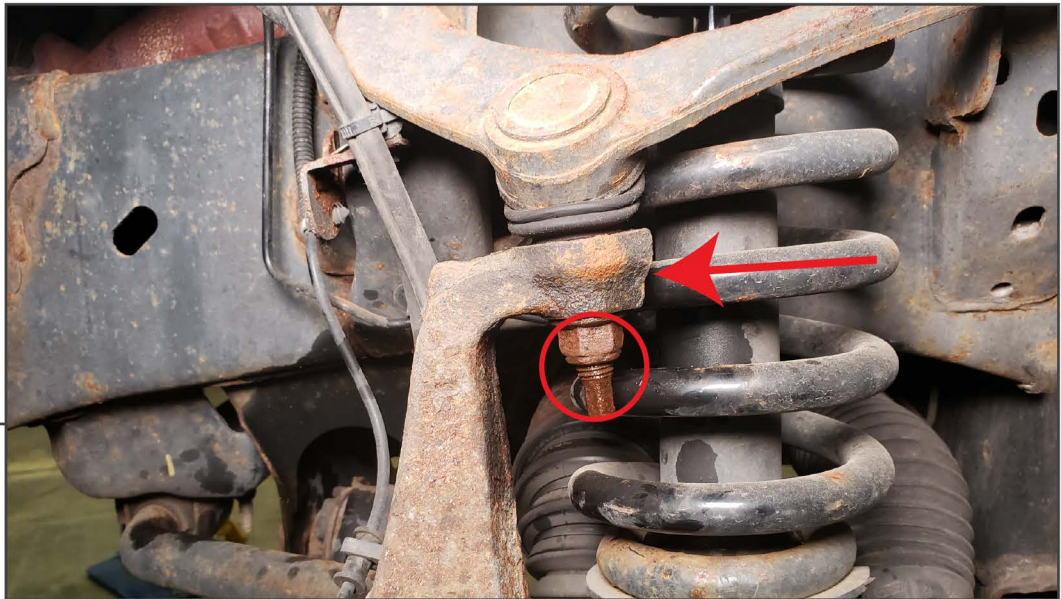


Using a 18mm socket loosen the tie rod nut. Leave the nut on the tie rod to protect the threads. Using a sledge hammer, strike the knuckle to separate the tie rod from the knuckle. Then remove the nut from the tie rod and the tie rod from the knuckle.

STEP 4

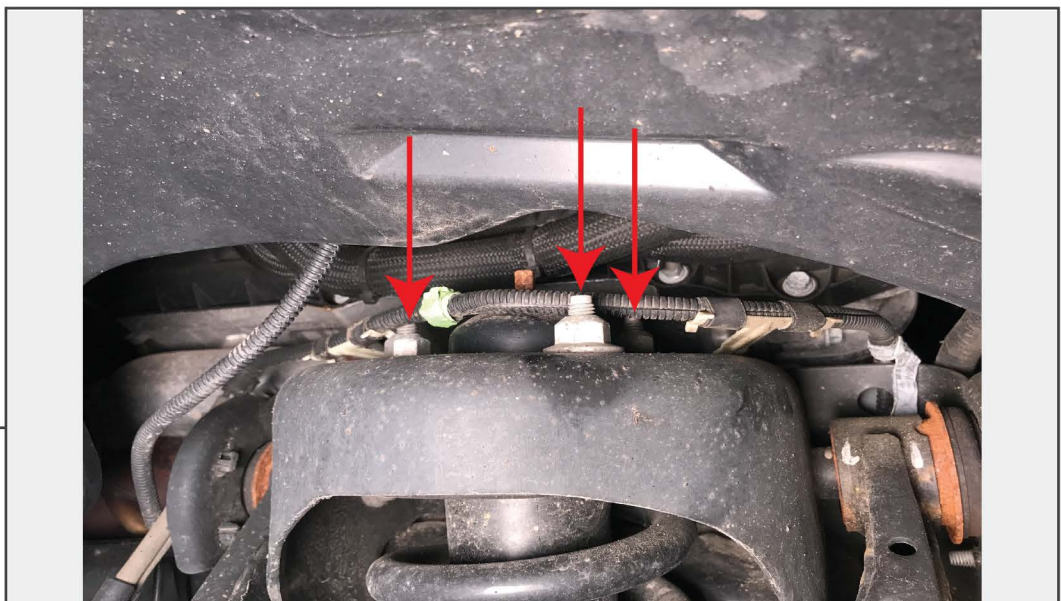


Remove the 27mm lower strut bolt and 30mm nut. Using a pry bar, carefully pry the lower portion of the strut from the control arm.



STEP 5

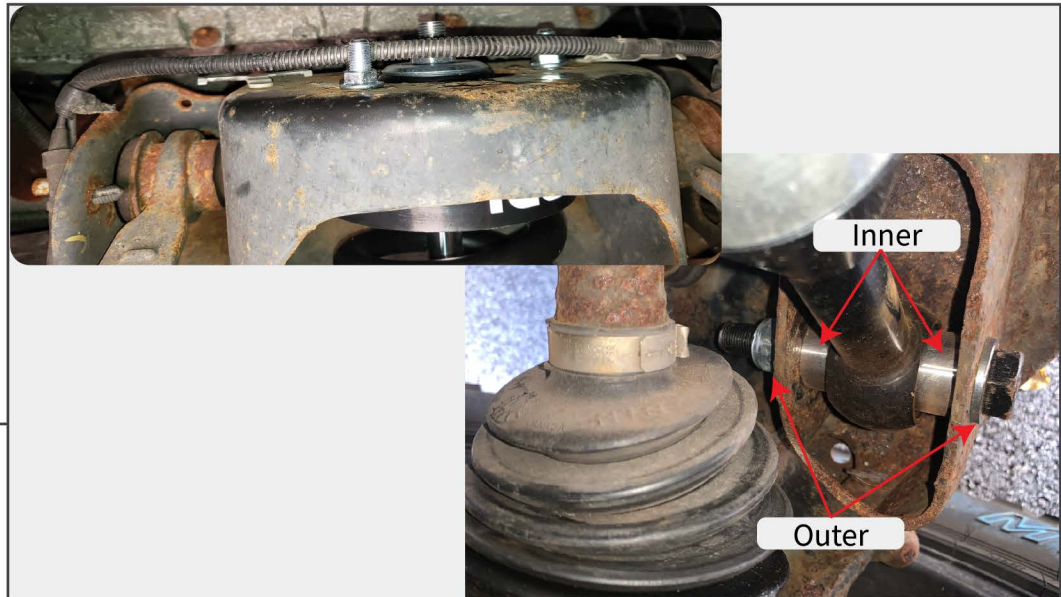
Using a 18mm socket, loosen the nut securing the upper ball joint to the knuckle. Using a sledge hammer, strike the knuckle to separate the ball joint from the knuckle. Remove the nut to separate the control arm from the knuckle. This will allow additional space when removing the strut assembly from the vehicle.



STEP 6

Using a 15mm socket, remove the (3) nuts securing the strut to the vehicle. Remove the strut assembly from the vehicle.

STEP 7



Install the coilover assembly. Rotate the upper strut mount as needed to align the mounting holes. Torque upper nuts to 30 lb. ft. Install the tapered portion of inner bushing on to the lower strut mount. Place the strut into the control arm strut pocket. Install the thinner outer bushing with the collar pushing through the control arm. Tighten the lower strut mount to 130 lb. ft.

STEP 8



Reinstall the front end components in reverse order. Adjust ride height by raising or lowering the spring perch. Set to desired height and tighten locking collars against each other. Front strut installation is not complete.

Suspension Torque Specifications:

- Upper Ball Joint: 85 lb. ft.
- Sway Bar Endlink Nut: 59 lb. ft.
- Tie Rod End: 85 lb. ft.

**REAR Coilover
STEP 9**



Begin by raising and supporting the rear of the vehicle using a jack and jack stands. Support the rear axle using the jack. Using a lug nut socket remove the rear wheels from the vehicle.

STEP 10



Remove the upper shock bolt using a 15mm & 18mm socket and ratchet.



STEP 11

Locate the lower shock mount. Remove the lower shock bolt using a 15mm & 18mm socket and ratchet. Remove the shock from the vehicle.



STEP 12

Install the new shock in the factory upper mount location using the factory hardware.

STEP 13



Install the new shock on the axle using the original hardware. If equipped, ensure any valving is easily accessible and will not interfere with any other suspension components.

STEP 14



Torque shock fasteners to 66 ft. lbs. Reinstall the fender liner and reinstall wheels torque to 150 lb. ft. Installation is now complete.