



Installation Instructions

717887

2015-20 FORD F-150 TRUCKS

2.7L/3.3L/3.5L ECOBOOST

3.5L TI-VCT & 5.0 ENGINE

2/4 wheel drive & all wheelbases except
standard cab / short bed.

This kit does NOT fit 3.5L Raptor trucks.

OVERVIEW:

1. Take a moment to read and understand these instructions before installing your Flowmaster performance system.

NOTE: Please inventory all parts now before continuing and if necessary, report any missing items to our tech line. This will avoid potentially stranding your vehicle until any missing replacement parts arrive.

ITM #	PART #	DESCRIPTION	QTY.
1	26753M	Inlet Pipe Assembly	1
2	26277M	Extension Pipe	1
3	71249-Z	Muffler	1
4	26754M	Tailpipe Assembly	1
5	ST509B	Tip	1
N/A	PK997	Hardware Package includes:	1
6	505HA	Front Clamp Hanger	1
7	MC300BS	3" Stainless Band Clamp	3
8	HW211	3/8"-16 x 2 HC Bolt	2
9	HW103	3/8" Nut	2
10	HW303	3/8" Flat Washer	4
11	HW309	3/8" Lock Washer	2

REMOVE STOCK EXHAUST SYSTEM:

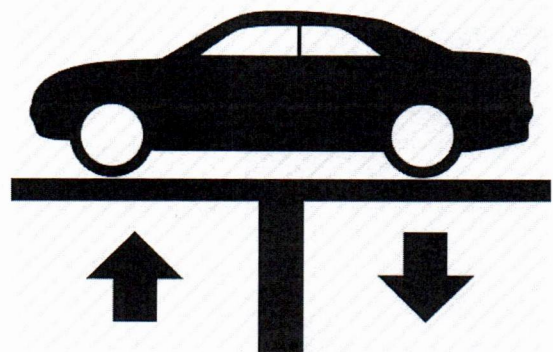
2. Raise vehicle up on a hoist or rack to working height. If you don't have access to a hoist or rack, support vehicle with jack stands.

WARNING:

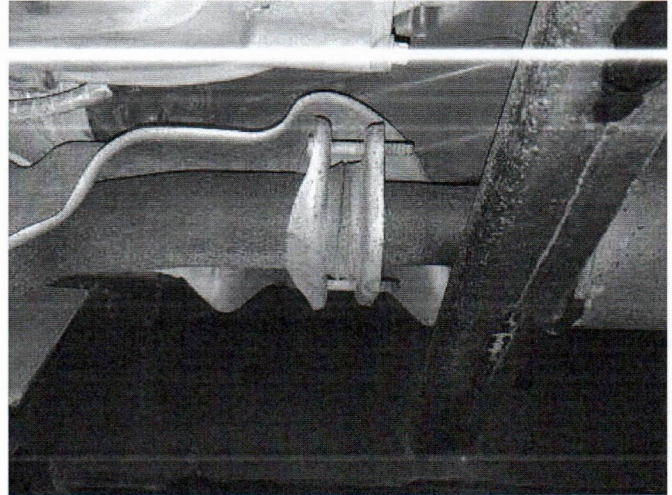
Avoid serious burns! Allow your vehicle time to cool completely before touching any factory engine components.

To ease preparation and installation of your new kit:

- Apply penetrating lubricant to mounts, bolts and clamps before you remove them.
- Use stands as necessary to support parts as you detach them from your vehicle and again as you install new parts.



- Remove bolts (x2) at front flange connection. Cut inlet pipe behind muffler, disengage wire hangers from isolators and remove exhaust system from vehicle.



INSTALL FLOWMASTER EXHAUST SYSTEM:

- Remove nuts from stock and Flowmaster clamps, apply anti-seize compound to bolts and re-install nuts.

NOTE: The image in this step is intended for illustrative purposes only and may or may not accurately reflect components included in your kit.

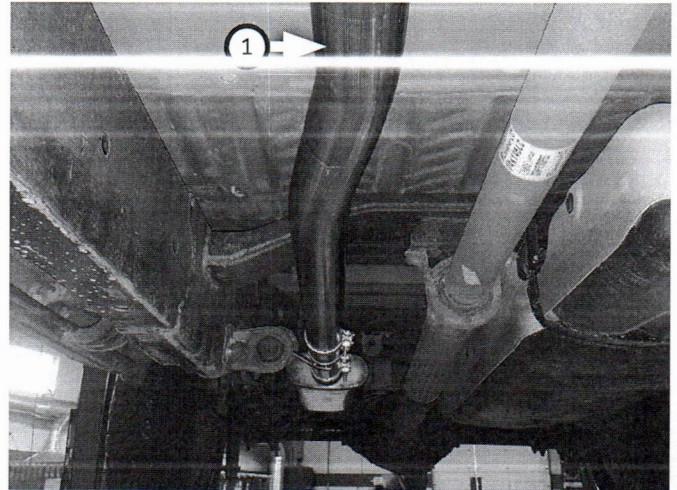
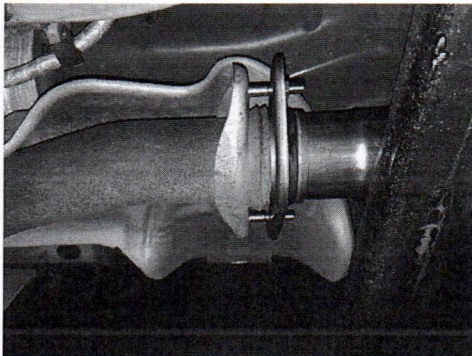


- If your vehicle falls within the specifications listed below, apply the corresponding modifications or assembly combinations to this kit to ensure it will install properly.

NOTE: Each slip-fit connection seats 2" deep except for the extension pipe end that seats 3" deep onto the inlet pipe. Mark each slip fit connection accordingly.

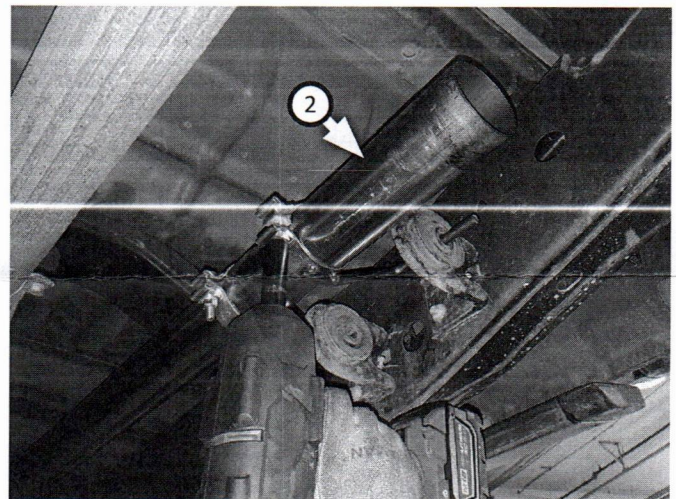
WHEEL BASE	BODY STYLE	BED LENGTH	INLET ASSY:	MODIFICATION
141"	Regular Cab	8'	Inlet Pipe only	Trim 4" from inlet pipe
145"	Super Crew	5.5'	Inlet Pipe only	None
145"	Super Cab	6.5'	Inlet Pipe only	None
157"	Super Crew	6.5'	Inlet+Extension	Trim 6" from extension pipe
163"	Super Cab	8'	Inlet+Extension	None

6. Install **inlet pipe (1)** to catalytic converter (oriented as shown) with (x2 ea) **bolts (8)** through **flat washers (10)** flange, **flat washers (10)**, **lock washers (11)** and **nuts (9)**.

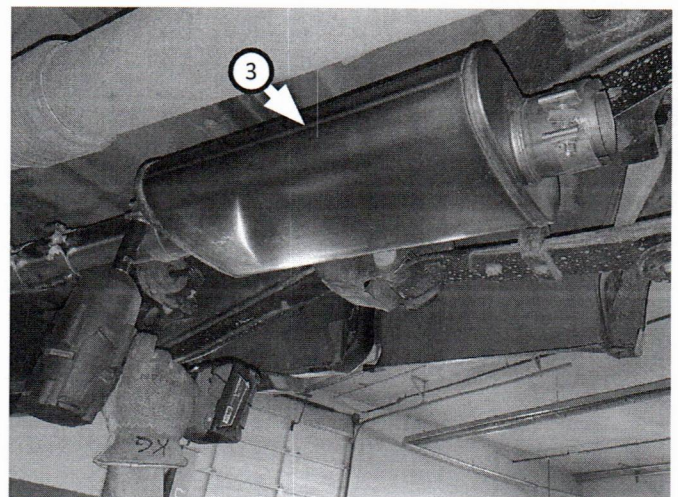


NOTE: Complete this step only for applicable builds (reference step 5).

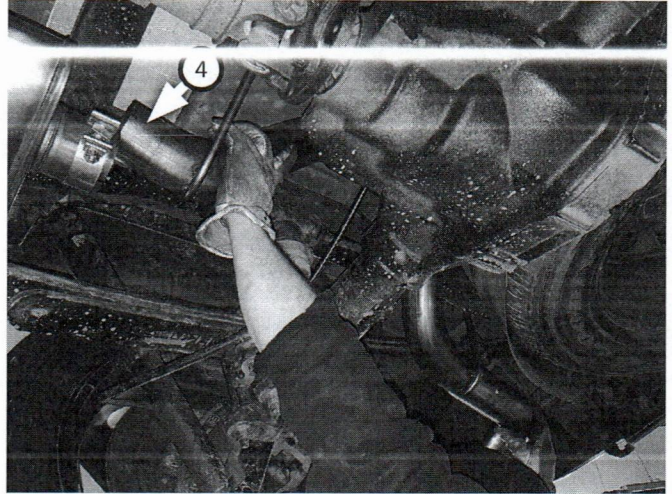
7. Place **clamp (7)** and **front clamp hanger (6)** onto **extension pipe (2)** then connect it to inlet pipe while sliding wire hanger into isolator. Tighten clamps enough to allow for adjustment.



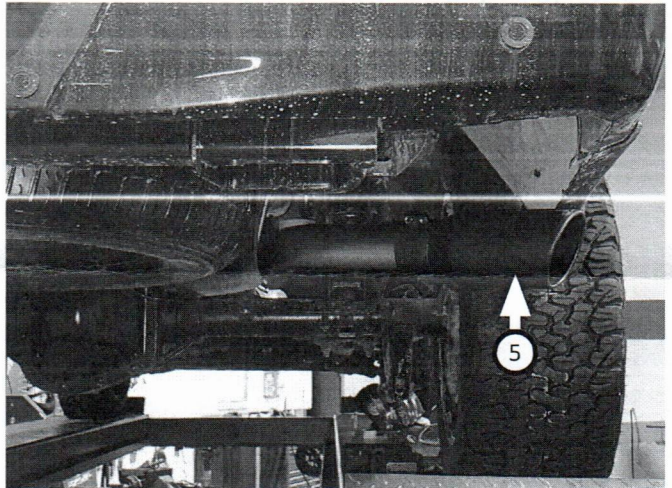
8. Place (x2) **clamps (7)** onto each end of **FFX muffler (3)** then connect it to extension or inlet pipe. Tighten front clamp enough to allow for adjustment.



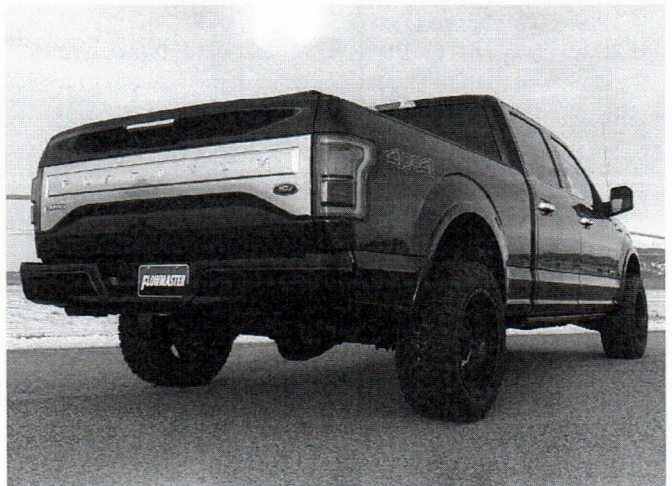
9. Route **tailpipe assembly (4)** over axle and connect it to muffler outlet. Mount wire hangers into isolators (42) then tighten clamp enough to allow for adjustment.



10. Install **tip (5)** onto tailpipe then tighten inlet.
11. Adjust the exhaust components to provide a satisfactory fit. Maintain a minimum of ½" clearance around all components of the exhaust system, keeping in mind suspension, travel and vibration. After making any required adjustments, securely tighten the clamps.
12. We recommend applying a one inch tack weld to all slip-fit connections for a more secure installation. You may also apply high temperature paint over welded areas to prevent rust and premature corrosion.



Congratulations, the installation of your FLOWMASTER performance exhaust system is now complete!





Installation Diagram
717887
2015-20 FORD F-150 TRUCKS
2.7L/3.3L/3.5L ECOBOOST
3.5L TI-VCT & 5.0 ENGINE
2/4 wheel drive & all wheelbases except
standard cab / short bed.
This kit does NOT fit 3.5L Raptor trucks.

