



BAJA UPPER REPLACEMENT GRILLE WITH LED LIGHTING AND EMBLEM SURROUND

(2009-2014 F-150)

INSTALLATION INSTRUCTIONS

CONTENTS

- (1) Grille Assembly
- (1) Wiring Harness
- (6) M6 Flange Nuts
- (4) Cable Ties
- (2) Scotch-lok Connectors

TOOLS REQUIRED

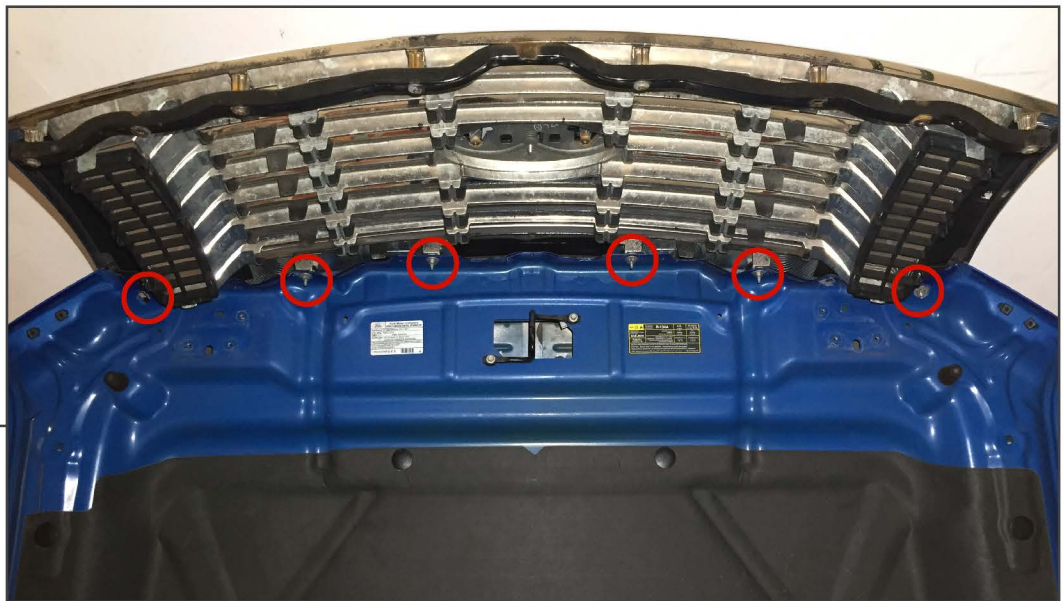
- 10mm Socket
- T-25 Torx Socket
- Ratchet
- Panel Removal Tool

SKU # T555888



STEP 1

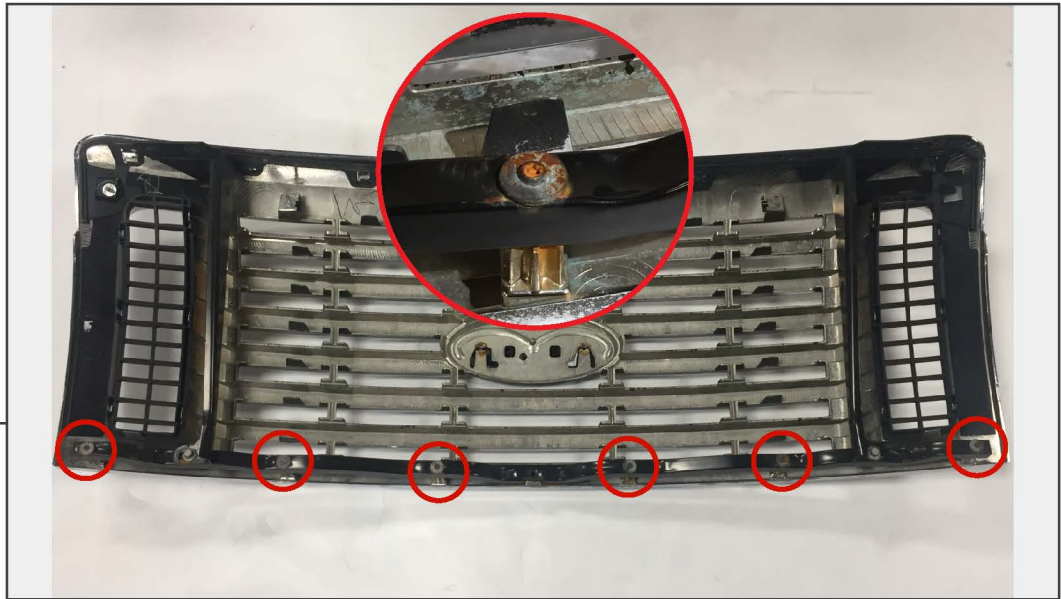
Using a 10mm socket, remove the (2) bolts across the top, and the (6) bolts holding the grille brackets to the hood. Remove bracket.



STEP 2

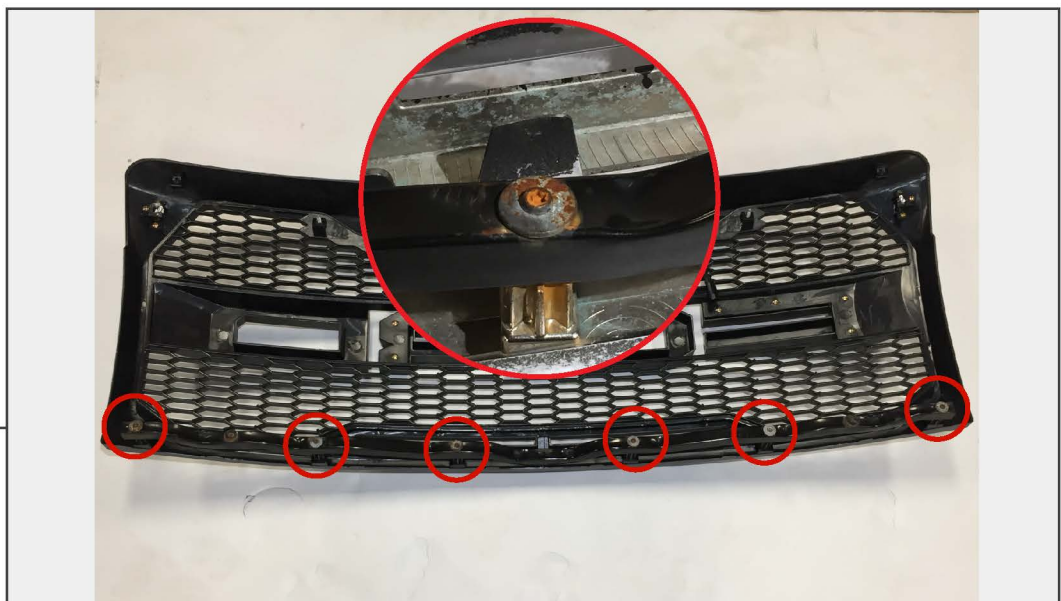
Using a 10mm socket, remove the (6) nuts across the top holding the grille to the hood. Gently pull up and outward to remove the grille. Use a trim removal tool if necessary.

STEP 3



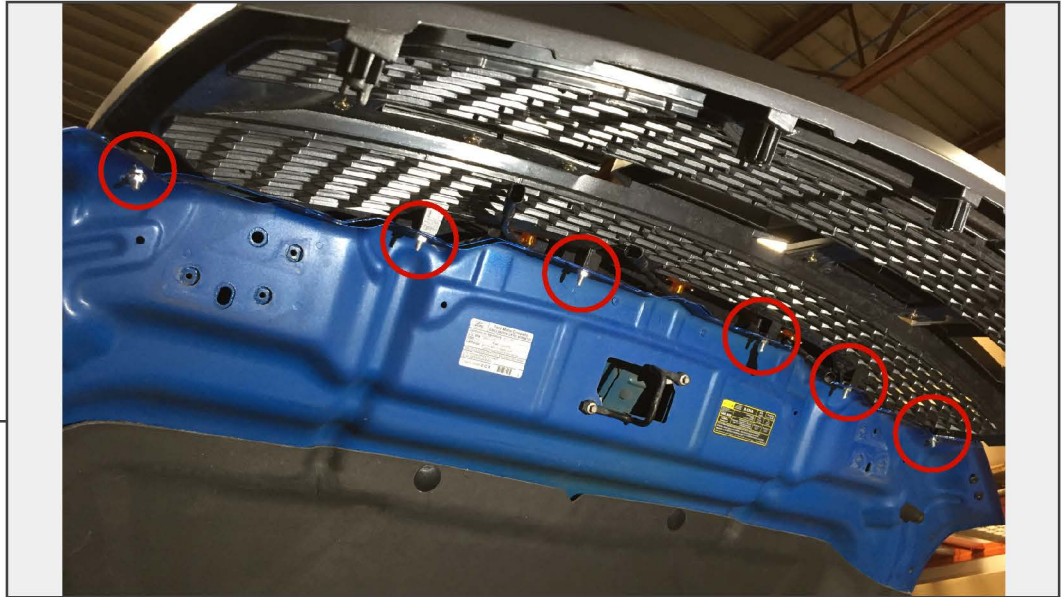
Using a T-25 torx bit, remove the (6) screws holding the grille brace to the factory grille.

STEP 4



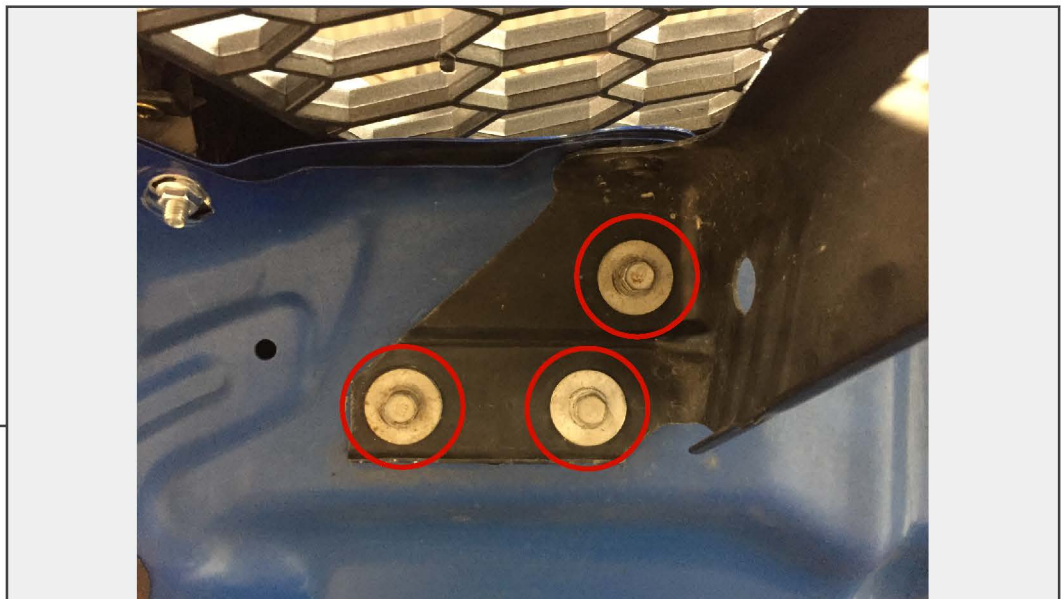
Install the grille brace to the new grille using the (6) factory screws.

STEP 7



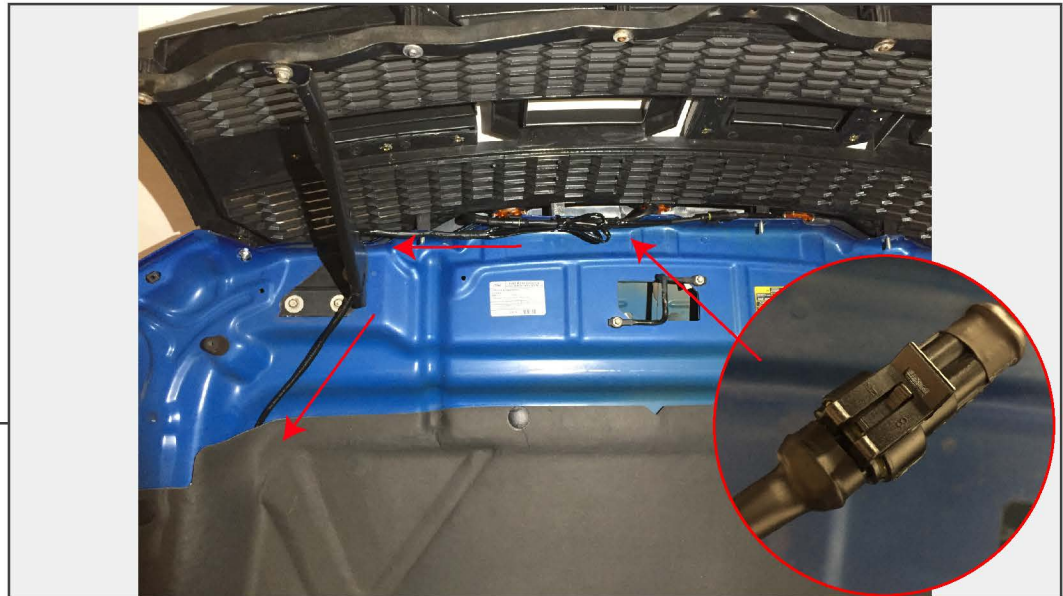
Install the new grille using the (6) supplied nuts securing the grille to hood.

STEP 8



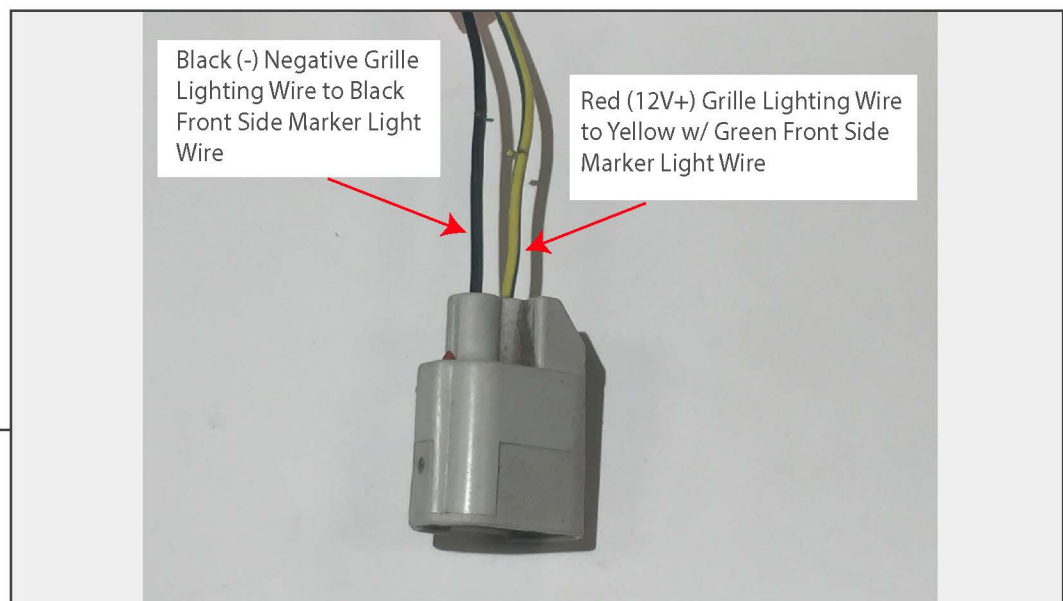
Using the (6) factory bolts, secure the grille brackets to the hood.

STEP 9



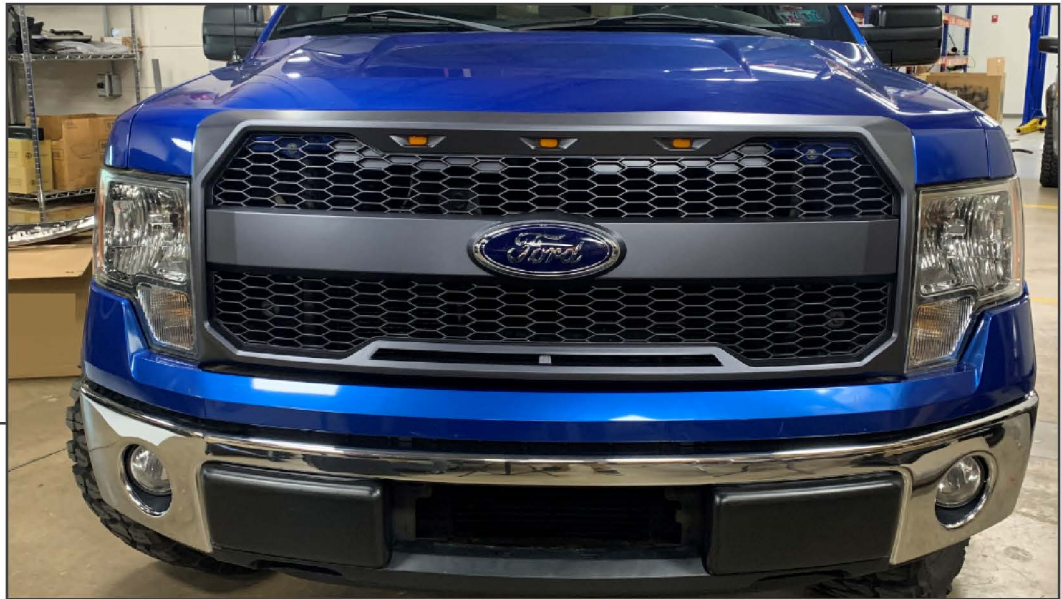
Connect the supplied wiring harness into the (3) LED grille marker lights. Zip tie the wiring safely along the hood insulation away from moving and/or hot engine components.

STEP 10



Using the (2) scotchlok connectors, splice the grille marker light wiring into the factory wiring as follows:

<u>Vehicle Side Marker Harness</u>	-	<u>Grille Wiring Harness</u>
Black	-	Black (-)
Yellow w/Green Stripe	-	Red (+)



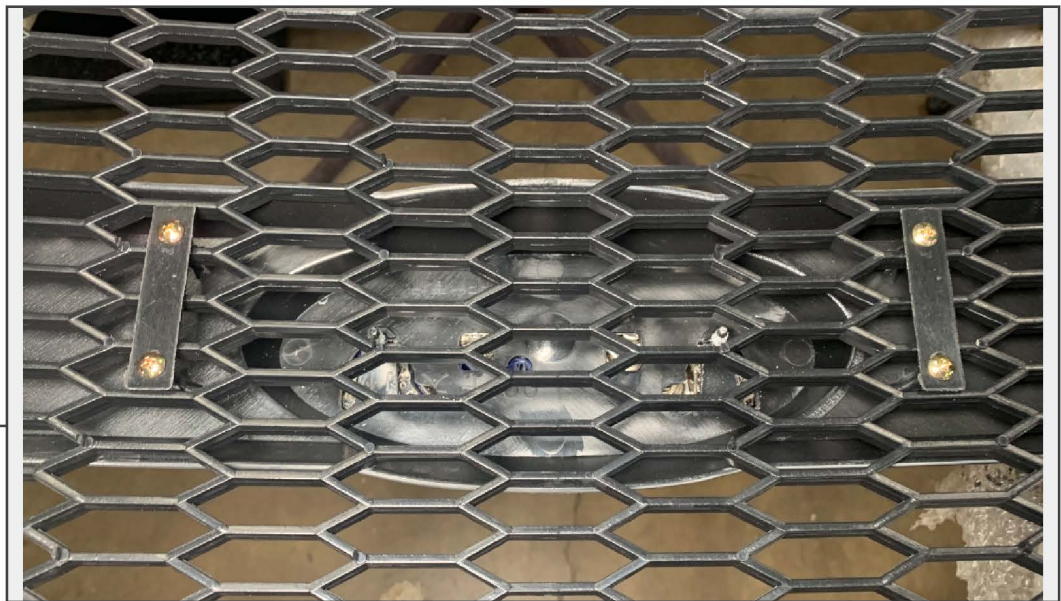
STEP 11

Slowly close the hood. If the grille is not centered between the headlights, slight adjustment is necessary. Refer to step 7, by loosening the nuts and adjusting the grille side to side.

Installation is now complete.

**STEP 5**

Remove (2) 10mm nuts securing the emblem to the grille. Using a flathead screwdriver, pry back on the emblem backing panel and release the emblem studs from the grille. Remove emblem through the front of the grille.

**STEP 6**

Push the emblem through the front of the new grille. Secure the emblem into place re-using the original (2) 10mm nuts.