



DUAL EXHAUST SYSTEM WITH POLISHED TIPS; SIDE/REAR EXIT

(2015-2020 F-150)

INSTALLATION INSTRUCTIONS

CONTENTS

- | | |
|------------------------------|-----------------------------|
| (1) Front Pipe (Trim to Fit) | (1) 3" Exhaust Clamp Hanger |
| (1) Mid-Pipe (Trim to Fit) | (2) 3/8-16 x 2.5" Bolts |
| (1) Muffler | (1) M10x1.50 100mm Bolt |
| (1) Left Side Pipe | (3) M10 Flat Washers |
| (1) Right Side Pipe | (3) M10 Lock Washers |
| (2) Rear Exit Pipes | (3) M10 Nuts |
| (2) Side Exit Pipes | (1) Square Washer |
| (2) Exhaust Tips | (1) Exhaust Hanger |
| (2) 3" Exhaust Clamps | (1) Rubber Exhaust Isolator |
| (5) 2.5" Exhaust Clamps | |

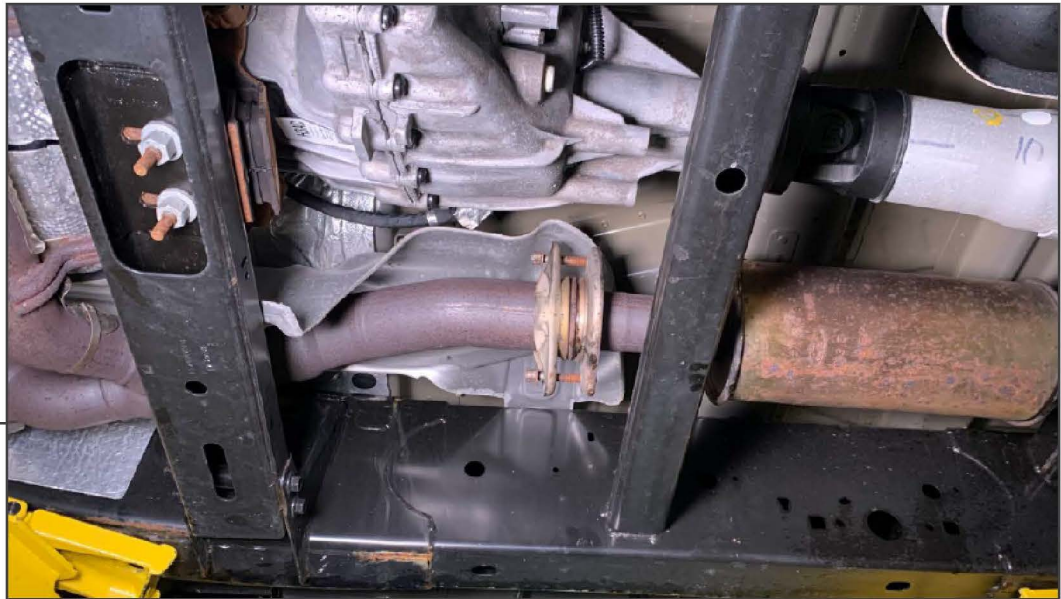
TOOLS REQUIRED

- 10, 13, 15, 16, 17mm Sockets /
Wrenches
Socket Wrench
Extensions
Large Flat Blade Screwdriver
Cut Off Tool
Jack & Jack Stands

SKU # T556094-35



STEP 1



Lift and supporting the vehicle to gain access to the factory exhaust system. Locate the factory (2) bolt exhaust flange located to the right of the transmission/transfer case. Use a 13mm socket to remove the factory bolts.

****Note:** Factory hardware will not be reused.

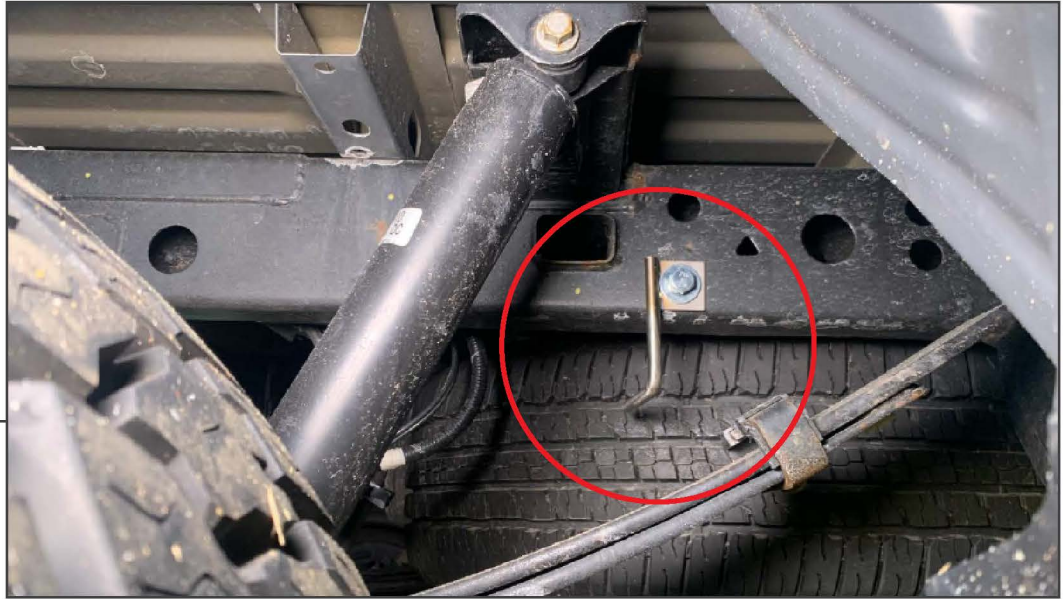
STEP 2



Using a 10mm socket, locate and remove the various exhaust hangers that secure the exhaust to the vehicle. Location and quantity may vary depending on cab style and bed length.

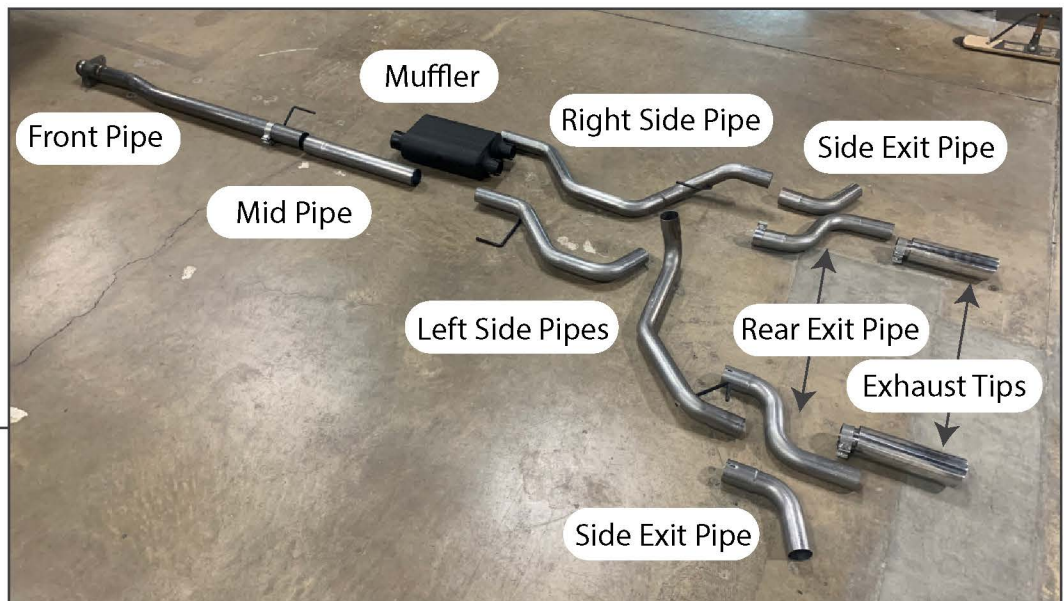


STEP 3



Install the supplied exhaust hanger using the provided M10x1.50 x 100mm bolt, flat washer, lock washer, square washer and hex nut. Torque to 25ft.-lbs.

STEP 4



Identify the different exhaust components. Depending on your vehicles configuration, you may need to trim the front/mid pipe. See step 5.



STEP 5



Trim the Front/ Mid pipe depending on your vehicles configuration. Use the chart below as reference.

<u>Wheel Base</u>	<u>Cab Style</u>	<u>Box Size</u>	<u>Front Pipe</u>	<u>Mid Pipe</u>
141"	Regular Cab	8'	Remove 4"	Not Used
145"	SuperCrew	5.5'	Do Not Cut	Not Used
145"	Extended Cab	6.5'	Do Not Cut	Not Used
157"	SuperCrew	6.5"	Do Not Cut	Remove 6"
164"	Extended Cab	8'	Do Not Cut	Do Not Cut

STEP 6



Loosely install the front pipe using provided (2) 3/8-16 x 2.5" bolts, lock washers, flat washers, and nuts.



STEP 7



If required, slide the mid pipe onto the front pipe with an exhaust clamp. Then, install the clamp hanger so that it aligns with the factory frame mounted exhaust hanger right before the muffler. Reuse the factory rubber isolator and bolts.

STEP 8



Loosely install the muffler and rear left and right side exhaust pipes. Ensure all joints have an exhaust clamp. Do not fully tighten them at this time.

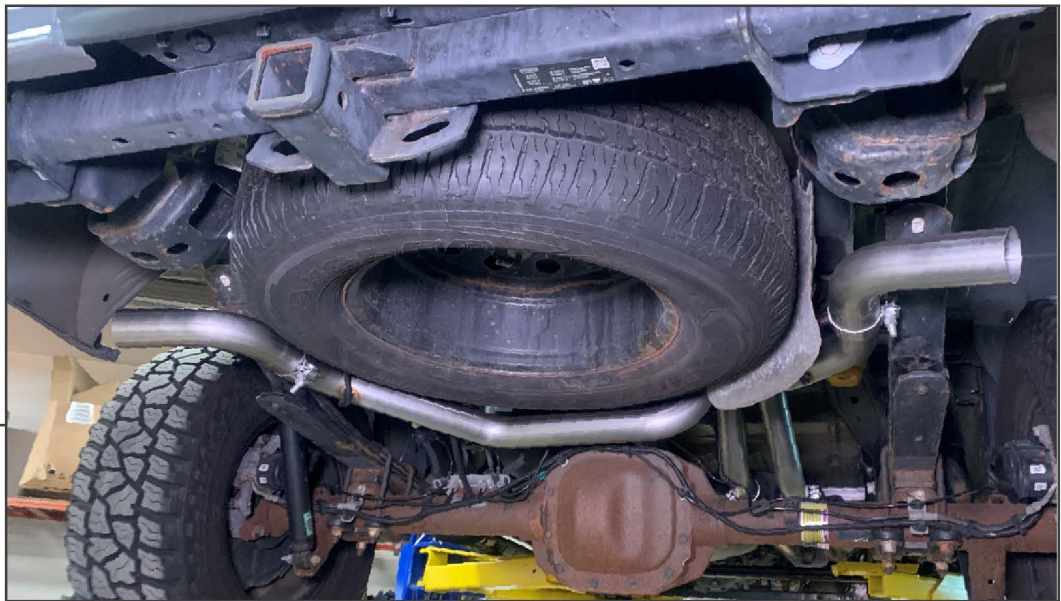


STEP 9



Hang the left side exhaust pipe using the provided isolator and hanger installed in step 3. Press the included star washers onto the hangers to keep the pipe centered and secured.

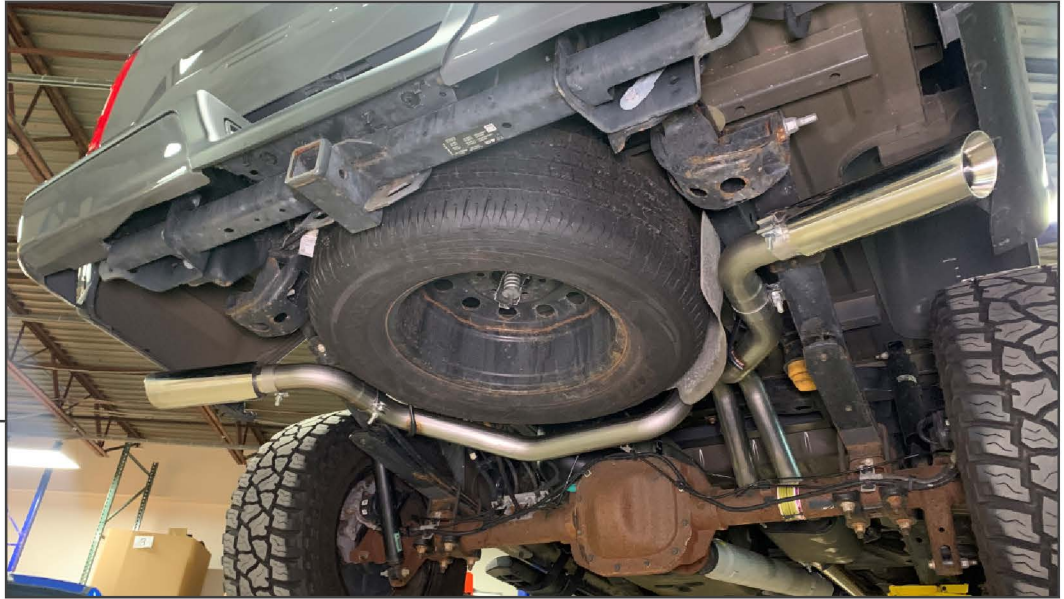
STEP 10



Determine the preferred exhaust exit area, and install the rear exit pipes, or the side exit pipes.



STEP 11



With the exhaust loosely installed, tighten all of the exhaust clamps. Work from the 2 bolt flange towards the exhaust tips. Rotate the muffler/pipes as need for best fit. Torque the 3/8-16 and exhaust tip fasteners to 25ft.-lbs. Tighten the exhaust clamps to 45ft.-lbs.

Installation is now complete.