

LED PROJECTOR HEADLIGHTS WITH AMBER LED DRL

(2015-2017 F-150)

INSTALLATION INSTRUCTIONS

CONTENTS

(1) LH Headlight
(1) RH Headlight
(1) DRL Harness

TOOLS REQUIRED

7mm, 8mm, 10mm Sockets
Ratchet
Panel Removal Tool
Flathead Screwdriver

STEP 1



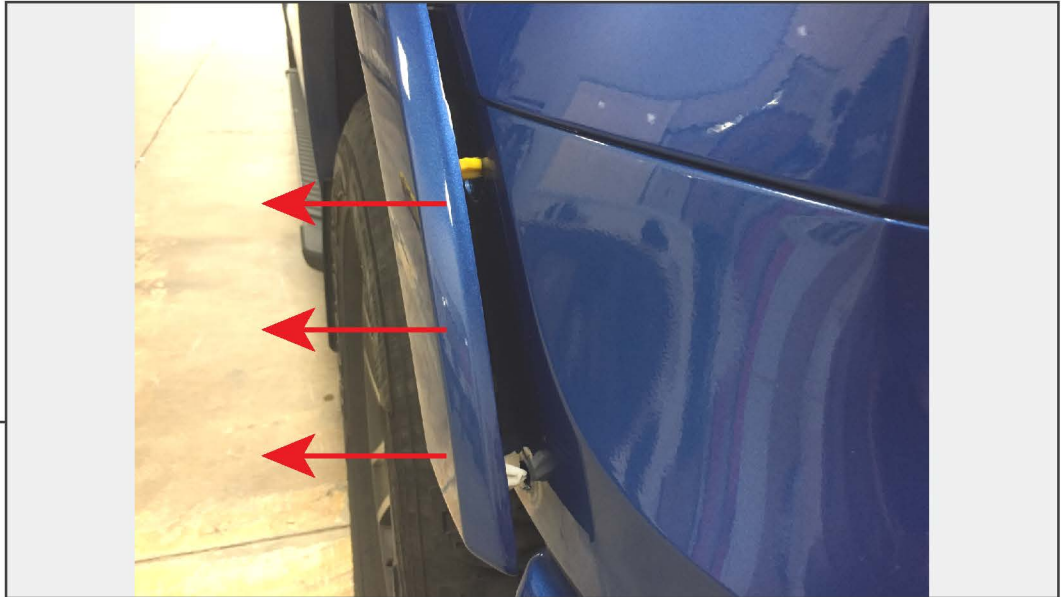
Remove (1) plastic push clip from the top of the headlight cover.

STEP 2



Remove (2) 7mm screws from the inner fender liner/flare.

STEP 3



Using a panel removal tool, gently pry the fender flare away from the headlight cover.

STEP 4



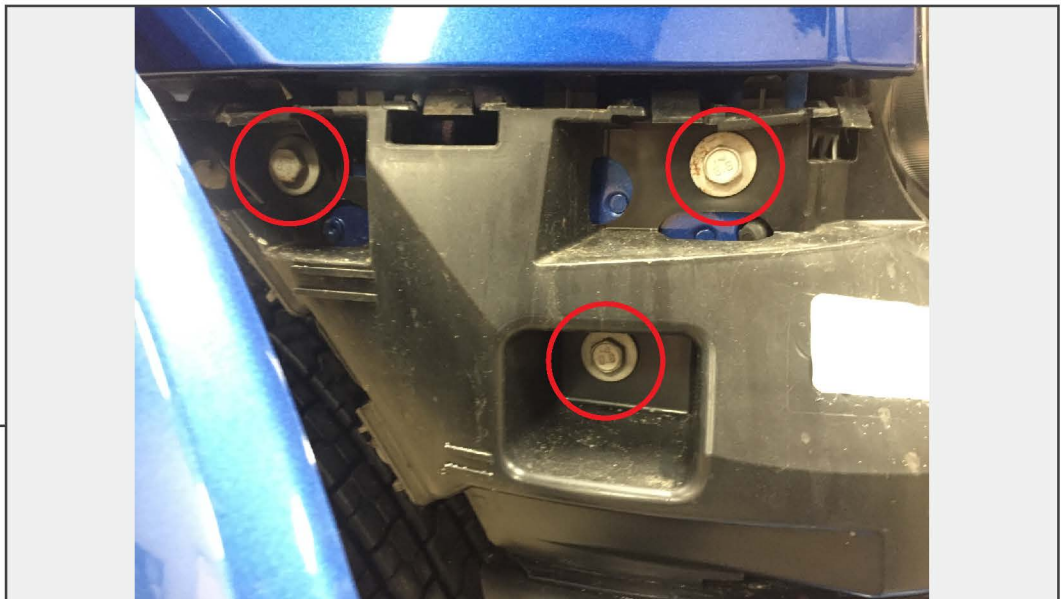
Carefully pry the headlight cover from the headlight assembly to dislodge the retaining clips. Set the cover aside.

STEP 5



Remove (3) 10mm bolts and (2) 8mm bolts from the lower portion of the headlight assembly.

STEP 6



Remove (3) 10mm bolts from the side lower portion of the headlight assembly.

STEP 7



Remove (2) 10mm bolts from the top of the headlight assembly.

STEP 8



Remove (1) 10mm bolt located in between the headlight and the vehicle grille.

STEP 9

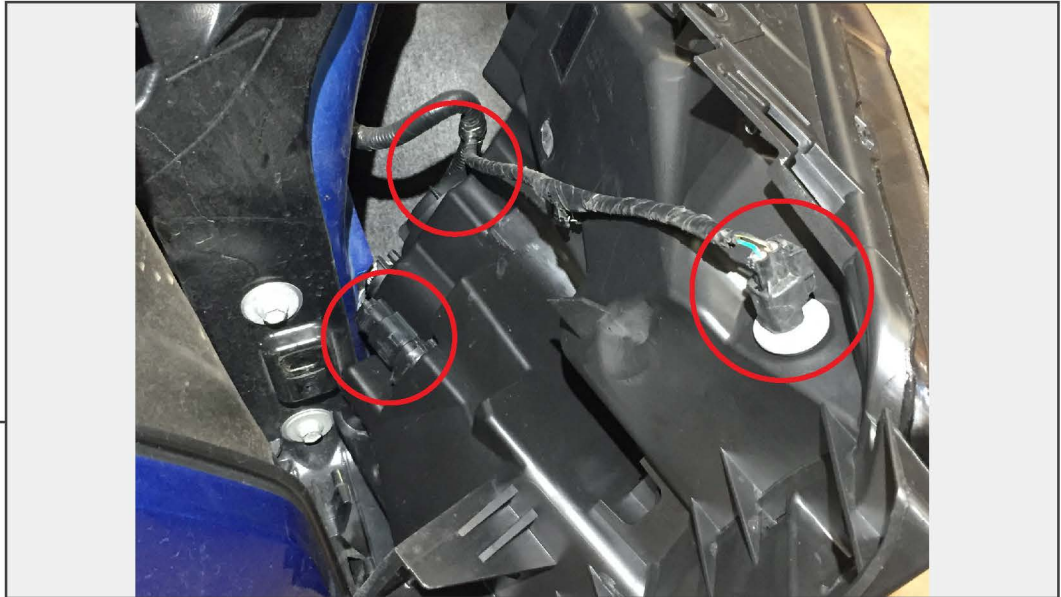


Using a flathead screwdriver, pry upwards on the locking tab while pulling the headlight forwards.

STEP 10

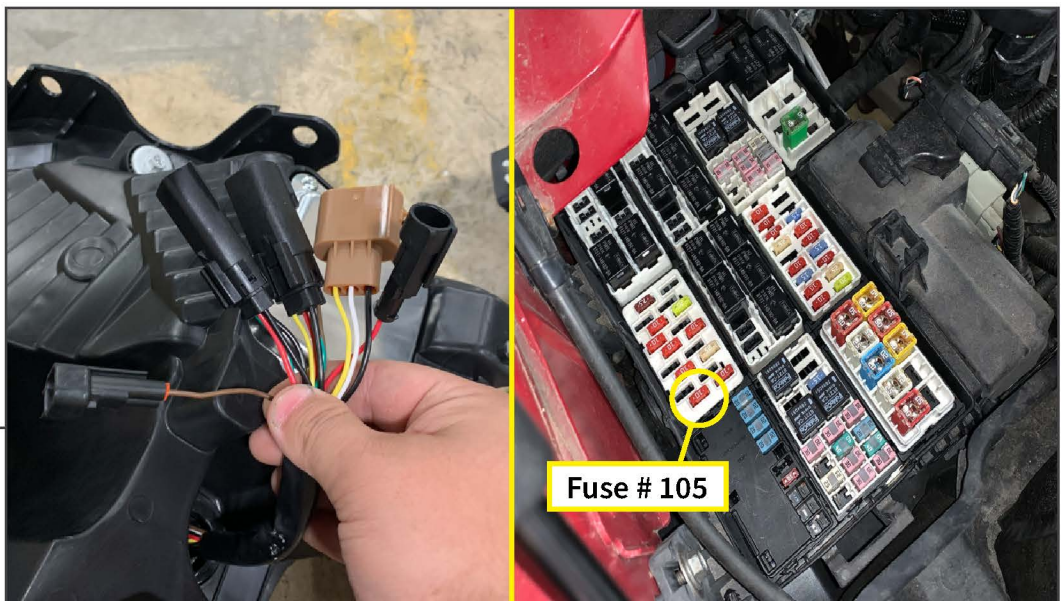


Carefully pry the headlight from the locating tab.



STEP 11

Unplug the (3) electrical connectors from the headlight, then remove the headlight from the vehicle.



STEP 12

Plug in the new headlight connectors to the vehicle harness. Plug in the DRL wiring harness into the headlight connector. Plug the DRL harness into fuse # 105 in the engine bay fuse box.

Note: Not all harnesses will be used depending on application.

STEP 13



Re-assemble the vehicle with the new headlight following steps 1-12 in reverse order.

STEP 14



Use the bolt located at the top of the headlight to adjust the lighting angle.

Installation is now complete.