



AR Series Bull Bar

FITMENTS

2004-2020 Ford F-150 (EXCL. EcoBoost)
2003-2017 Ford Expedition
2007-2008 Lincoln Mark-LT

**STOP - Verify part and application is correct before proceeding.
If missing part or damage item please customer service directly.**

**Call us at (909) 895-4522 Monday-Friday 9am-6pm PST
Email us at SUPPORT@ARMORDILLOUSA.COM**

ARMORDILLO RECOMMENDS PROFESSIONAL INSTALLATION ON ALL THEIR PRODUCTS

WARNING: When working on ,under or around vehicle exercise caution. If working without a lift check vehicle owners manual for correct jacking points. Always wear safety glasses and ensure a safe working area. Serious injury or death could occur if safety measures are not followed.

PERIODICALLY CHECK TO ENSURE ALL FASTENERS ARE TIGHT AND ALL STRUCTURAL COMPONENTS ARE SOUND CARE

To protect your investment, wax this product after installing. Regular waxing is recommended to add a protective layer over the finish. Do not use any type of polish or wax that may contain abrasives, that could damage the finish.

For stainless steel: Aluminum polish may be used to polish small scratches and scuffs on the finish.
Mild soap may be used to clean bull guard.

For color finishes: Regular waxing is recommended to add a protective layer over the finish.
Mild soap may be used to clean the bull guard.

ARMORDILLO products are designed as decorative accessories and should not be relied upon as protection for the vehicle or passengers. Buyers assume all risk and liability whatsoever resulting from installation and use of ARMORDILLO products. ARMORDILLO assumes no liability for injury, loss, incidental or consequential damages in the event of an accident.

ARMORDILLO guarantees the original purchaser a LIMITED 1 YEAR WARRANTY from date of purchase against manufactured defects in materials, workmanship and finish under normal use. This excludes damage resulting from road hazards, debris, product misuse, improper installation, impairments from accidents, neglect, shipping or product modification. This warranty applies only to new products and is limited to the repair or replacement of ARMORDILLO products. Warranty does not included cost of removal, installation, labor, freight, inconvenience, or consequential damage. Original purchaser must return defective merchandise to the original place of purchase and must provide the proof of purchase.

Bill Of Materials:



HARDWARE			
QTY	DESCRIPTION	QTY	DESCRIPTION
1	Bull Bar	4	M12 Small Washers
2	Mounting Brackets	4	M12 Hex Nuts
4	1M2 x 40mm Bolt Plates	8	M10 U-Bolt
8	M12 x 35mm Hex Head Bolts	4	M10 Washers
4	M12 Lock Washers	4	M10 Lock Washers
4	M12 Large Washers	4	M10Hex Nuts



LEVEL OF DIFFICULTY: EASY

PRO INSTALL TIME: 20 MIN.

NOVICE INSTALL TIME: 40 MIN.

TOOL REQUIRED



SIZE	DESCRIPTION
3/8"	Ratchet
17/19mm	Socket
17/19mm	Wrench

INSTALLATION TIPS:

- 1) REMOVE CONTENTS FROM BOX, VERIFY ALL PARTS LISTED ARE PRESENT AND FREE OF DAMAGE. READ AND UNDERSTAND ALL INSTRUCTIONS BEFORE ATTEMPTING INSTALLATION.
- 2) CUTTING OF LOWER VALANCE OR TRIM MAYBE REQUIRE, INSTALLATION MAY INTERFERE WITH FRONT SENSORS ON BUMPER.
- 3) TWO PERSON WILL BE REQUIRED WHEN MOUNTING AND ALIGNING BULL BAR
- 4) USING PROPER TOOLS WILL IMPROVE THE QUALITY OF THE INSTALL AND REDUCE THE TIME REQUIRED.
- 5) NEED HELP OR HAVE SOME QUESTIONS CALL US AT (855) 262-4751 OR EMAIL US AT CONTACT@STEHLERAUTOMOTIVE.COM
- 6) REMOVAL OF FRONT LICENSE PLATE IS REQUIRED, RELOCATION OF FRONT LICENSE PLATE IS HIGHLY RECOMMENDED.
- 7) ANTI-SEIZE LUBRICANT IS HIGHLY RECOMMEND TO USED ON ALL



Hardware Reference Chart

	M6	M8	M10	M12	M14	M16
Socket size	10mm	13mm	17mm	19mm	22mm	24mm
Grade 8.8/8.9	62L.0a	22L.0a	40L.0a	70L.0a	110L.0a	175L.0a
Grade 10.9	64L.0a	22L.0a	40L.0a	70L.0a	110L.0a	175L.0a

1) Vehicles with Factory Tow Hooks

Remove tow hooks by removing the front bolt and only loosening the rear bolt. Slide the tow hooks off. Keep the factory double nut plate in the frame and aligned with the holes. Position the Mounting Bracket up to the bottom of the frame and secure it with the factory tow hook bolts and factory double nut plate.

NOTE: This Bull Bar is not compatible with the factory tow hooks, so you will not be reinstalling the tow hooks.

Vehicles without Tow Hooks

Starting on the driver side of the vehicle, insert (1) 12mm Bolt Plate through the opening in the open front end of the frame and down through the rear hole in the bottom of the frame. Thread (1) 12mm x 24.1mm OD x 2.1mm Flat Washer, (1) 12mm Lock Washer and (1) 12mm Hex Nut onto the threaded end of the Bolt Plate. Slide the slotted end of the driver side Mounting Bracket under the nut and washers. Insert the second 12mm Bolt Plate through the remaining hole toward the front of the Mounting Bracket. Secure with (1) 12mm Lock Washer, (1) 12mm x 24.1mm OD x 2.1mm Flat Washer and (1) 12mm Hex Nut. Snug but do not tighten the hardware at this time.

Vehicles with "closed ends" on front of frame

Starting on the driver side of the vehicle, locate the two holes on the bottom of the frame. Insert (1) 10mm U-Bolt into one hole and out the other. Hold the driver side Mounting Bracket in position with the slotted end toward the rear. Secure the Mounting Bracket to the U-Bolt with (2) 10mm x 26mm OD x 3.1mm Flat Washers, (2) 10mm Lock Washers and (2) 10mm Hex Nuts. Snug but do not tighten the hardware.

2) Repeat the appropriate for the passenger side Mounting Bracket installation.

3) With help position the Bull Bar on the inside of the Mounting Brackets. Use the included (4) 12mm x 35mm Hex Bolts, (4) 12mm lock Washers, (8) 12mm Flat Washers and (4) 12mm Hex Nuts to attach the Bull Bar to the Mounting Brackets. Do not tighten at this time.

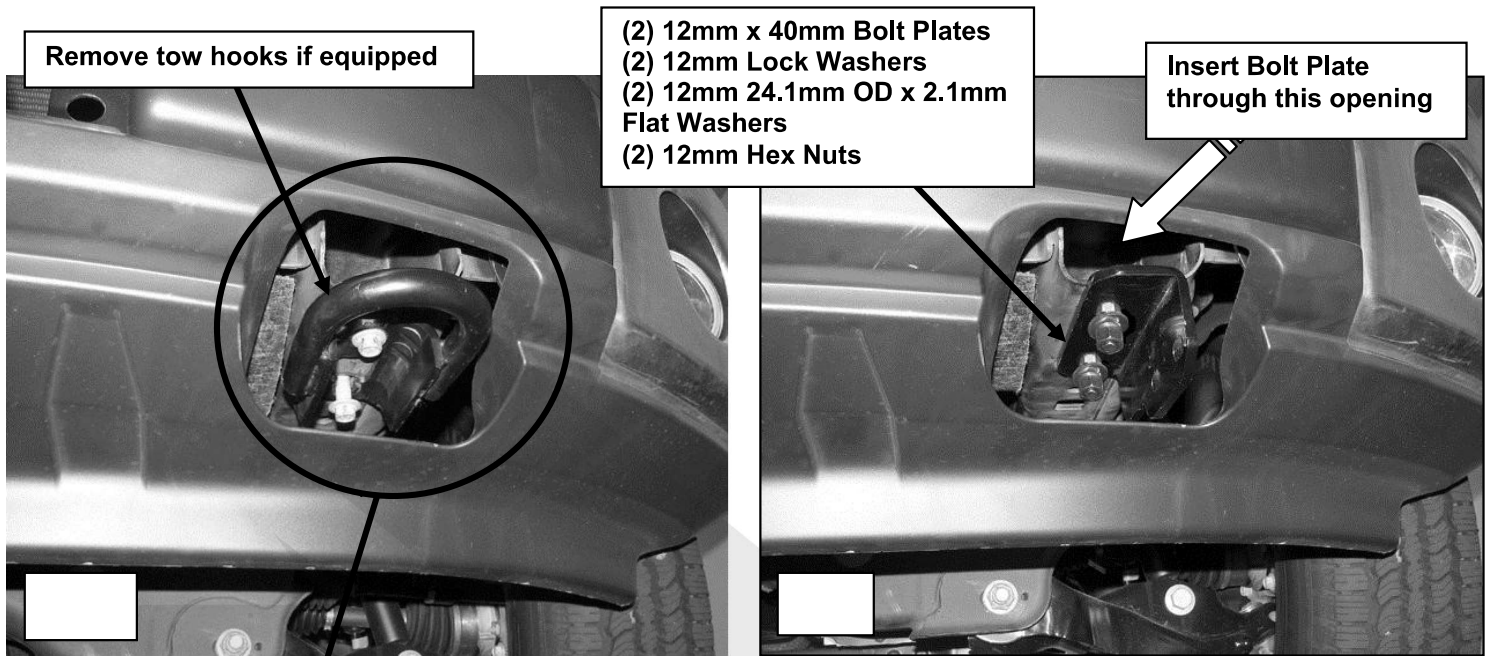
4) Align and adjust the Bull Bar properly, and tighten all hardware.

To protect your investment, wax this product after installing. Regular waxing is recommended to add a protective layer over the finish. Do not use any type of polish or wax that may contain abrasives that could damage the finish.

For stainless steel: Aluminum polish may be used to polish small scratches and scuffs on the finish. Mild soap may be used also to clean the Bull Bar.

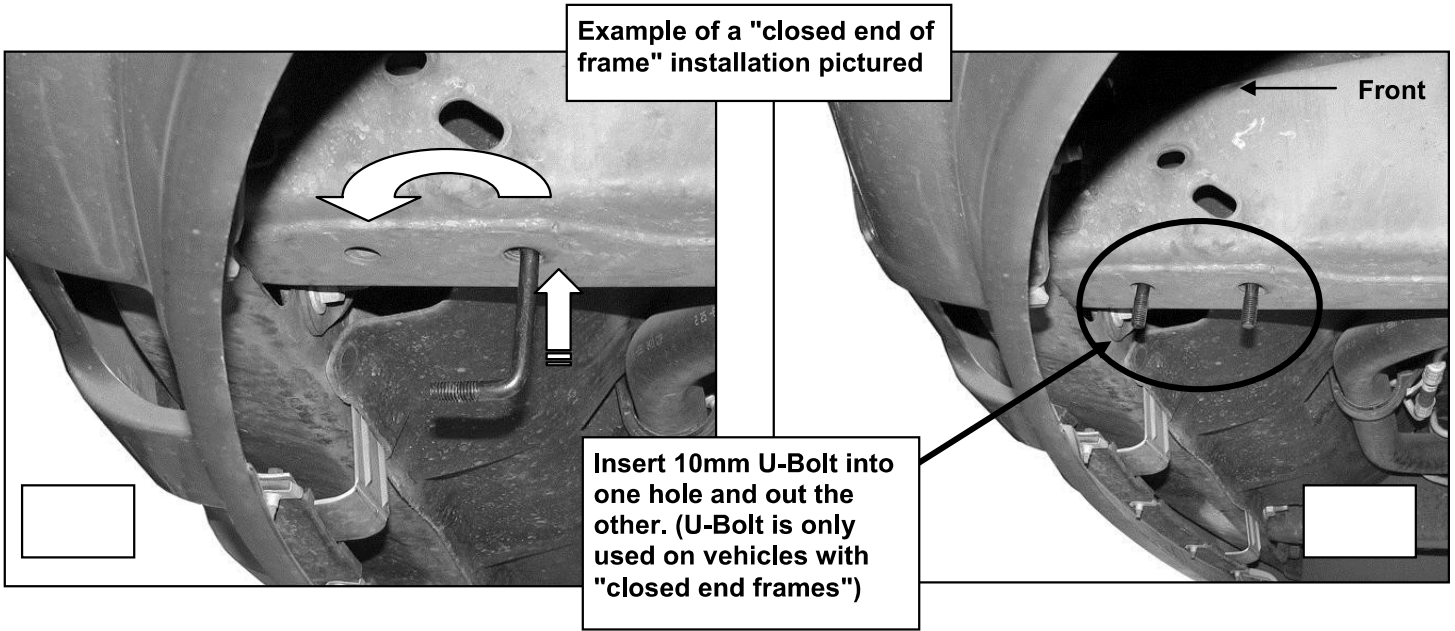
For gloss black finishes: Mild soap may be used to clean the Bull Bar.

Driver Side Installation Pictured



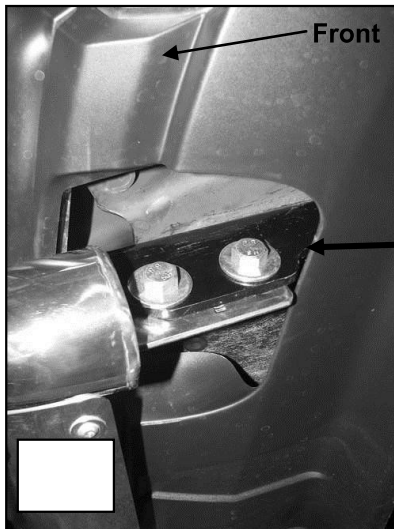
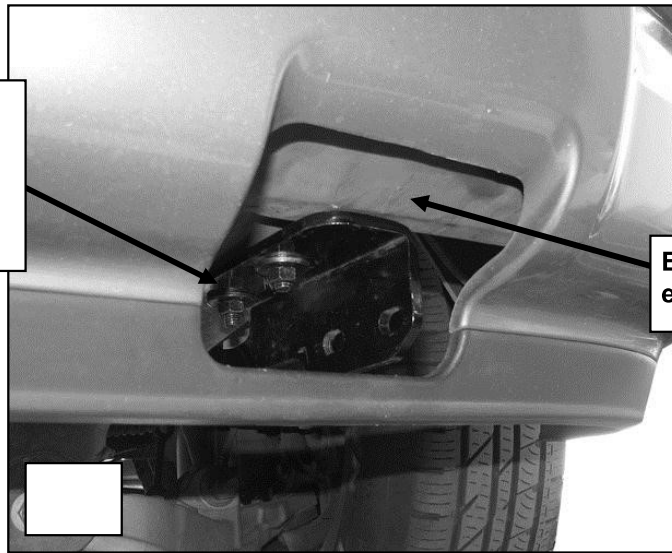
NOTE: On vehicles without tow hooks, the area circled above may be covered by an indented plastic panel. Cut or remove the panel as required to gain access to the front of the frame rail to allow bottom brackets to pass through the bumper cover.

Driver Side Installation Pictured



- 10mm U-Bolt
- (2) 10mm Lock Washers
- (2) 10mm 26mm OD x 3.1mm Flat Washers
- (2) mm Hex Nuts

NOTE: On vehicles without tow hooks, this area may be covered by an indented plastic panel. Cut or remove the panel as required to gain access to the front of the frame rail to allow bottom brackets to pass through the bumper cover.



- (2) 12mm x 35mm Hex Bolts
- (2) 12mm Lock Washers
- (2) 12mm 30.1mm OD x 3.1mm Flat Washers
- (2) 12mm Hex Nuts