



# BED STIFFENER BRACKETS

(2009-2014 F-150)

---

## INSTALLATION INSTRUCTIONS

### CONTENTS

---

- (1) LH Bed Stiffener
- (1) RH Bed Stiffener
- (4) M10x1.50 x 30mm Allen Bolts
- (4) M10 Flat Washers (25mm OD)
- (4) M10 Flat Washers (30mm OD)
- (4) M10 Lock Washers
- (4) M10 Flange Nuts

### TOOLS REQUIRED

---

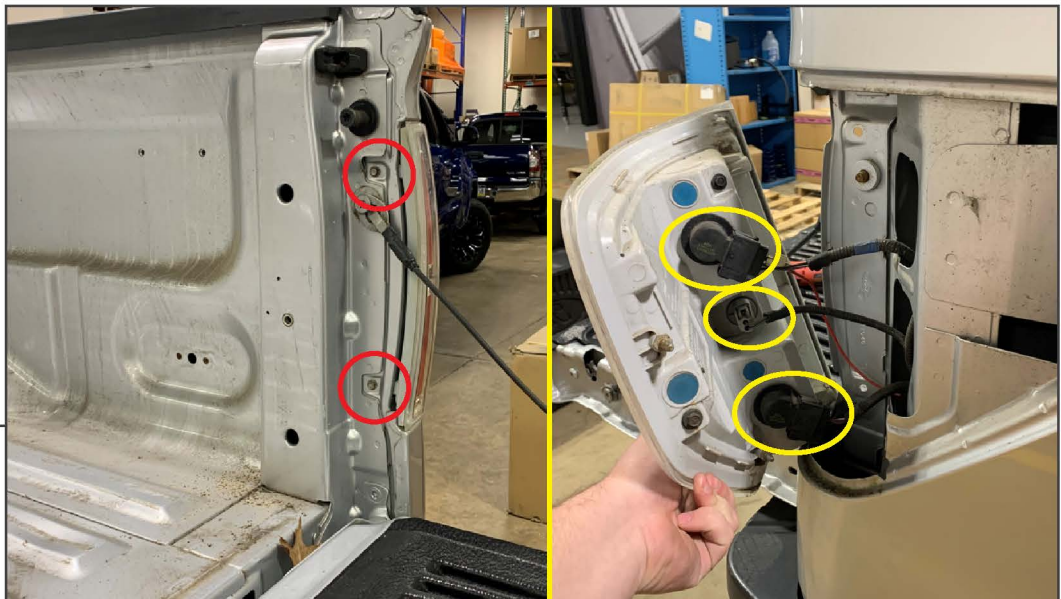
- T-55 Torx Socket
- 6mm Allen Key/Socket
- 8mm Socket
- 15mm Wrench
- Ratchet

**STEP 1**



Remove (1) T-55 Torx bolt from the floor of the bed.

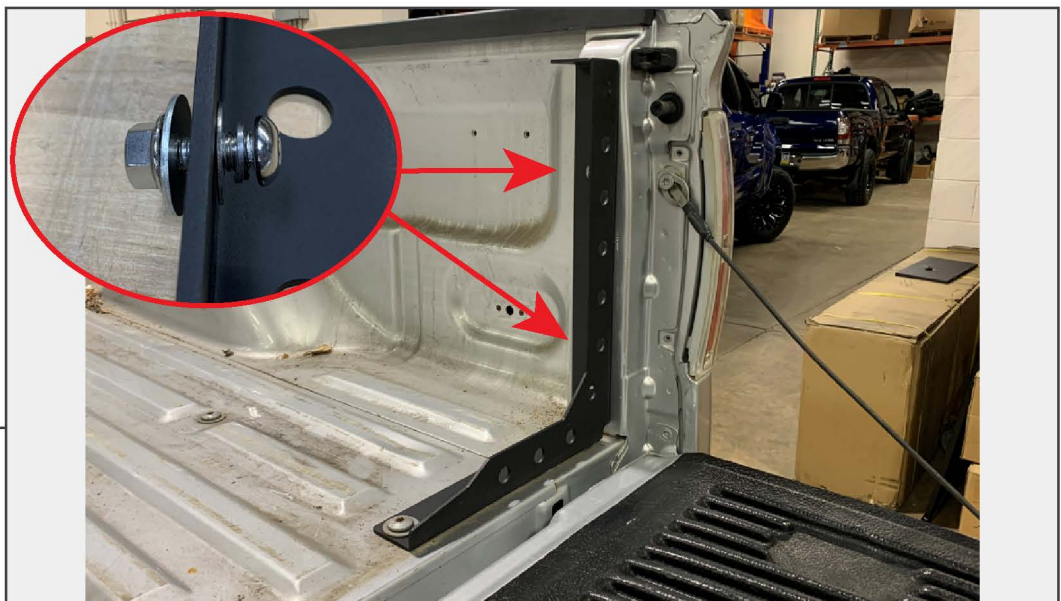
**STEP 2**



Remove (2) 8mm bolts from the vehicle tail light. Firmly pull the tail light away from the bed and disconnect the (3) light sockets from the tail light. Set tail light aside.

**STEP 3**

Align the bed stiffener bracket to the vehicle, and loosely install the original T-55 Torx bolt through the bracket into the bed floor.

**STEP 4**

Insert (2) M10 x 30mm Allen bolts, (2) M10 lock washers, (2) M10 flat washers (25mm OD) through the bracket to allow the bolt threads to show in the tail light portion of the bed. Secure the bracket into place using (2) M10 flat washers (30mm OD) and (2) M10 flange nuts. Tighten until secure.



**STEP 5**

Tighten the T-55 Torx bolt on the bed floor to OEM specifications. Plug in and reinstall the tail light using the original hardware. Repeat steps 1-5 to the opposite side of the vehicle.

Installation is now complete.