



OLD GLORY GRILLE INSERT

(2009-2014 F-150)

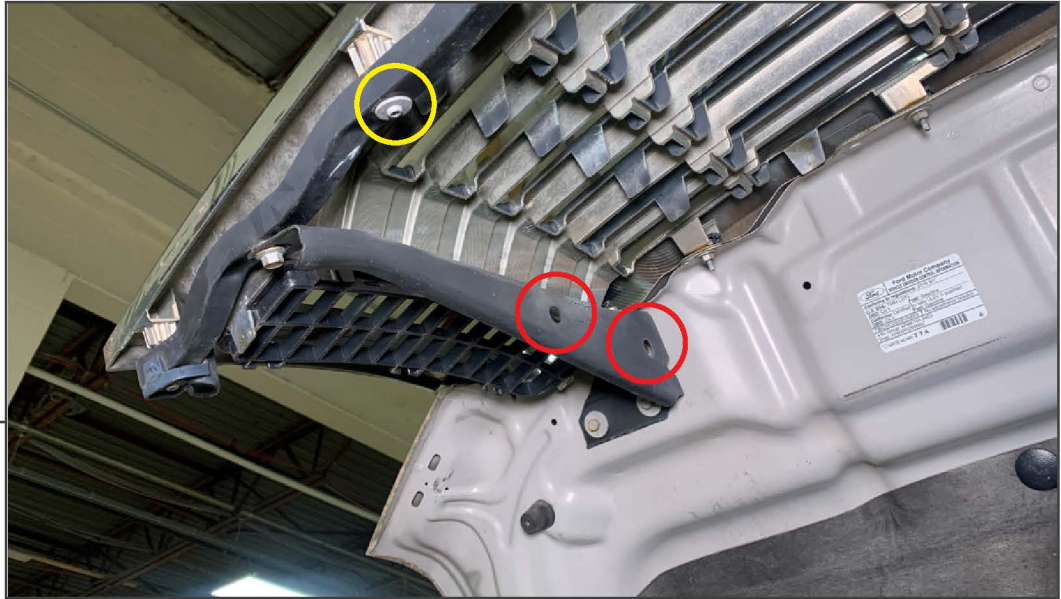
INSTALLATION INSTRUCTIONS

CONTENTS

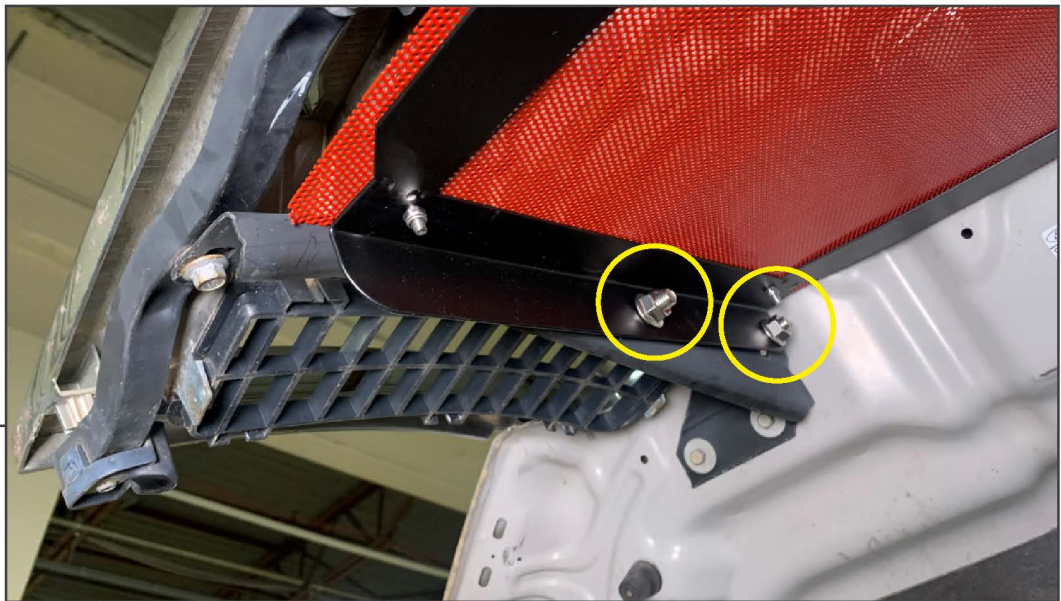
- (1) Grille Insert
- (2) Grille Insert Mounting Brackets
- (4) M10x1.50 x 25mm Allen Bolts
- (4) M10 Flange Nuts

TOOLS REQUIRED

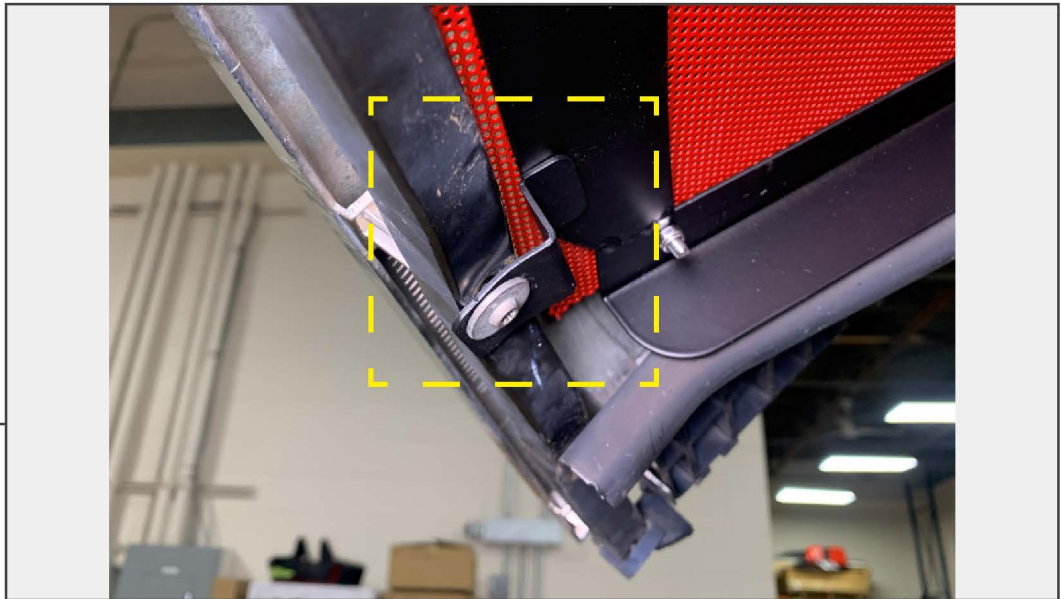
- 15mm Socket/Wrench
- T-25 Torx Socket
- 6mm Allen Socket/Key
- Ratchet

**STEP 1**

Open the vehicle hood and locate the (2) pre-drilled holes in the grille mounting arm on each side of the vehicle. Remove (1) T-25 Torx screw from the lower grille mounting bracket on both sides of the vehicle.

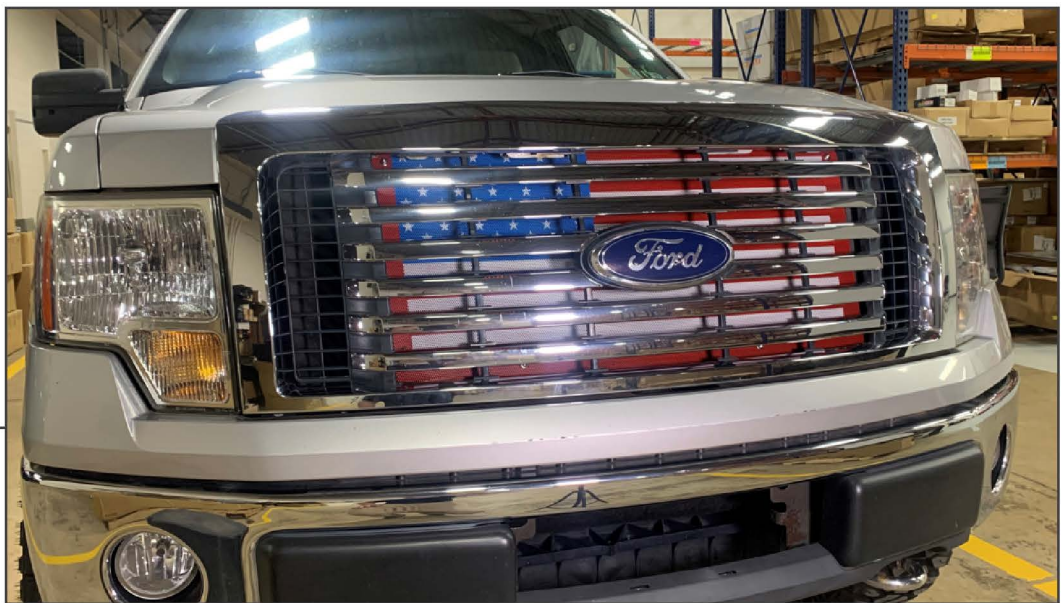
**STEP 2**

Align the grille insert to the vehicle, and loosely secure the grille insert using (2) M10x1.50 x 25mm Allen bolts and (2) M10 flange nuts.



STEP 3

Install (1) grille insert mounting bracket to the grille insert rear frame using the original (1) T-25 Torx screw on each side of the vehicle.



STEP 4

Tighten all hardware evenly until secure.

Installation is now complete.