

# **XR SERIES LED PROJECTOR HEADLIGHTS WITH DRL**

(2015-2017 F-150)

---

## INSTALLATION INSTRUCTIONS

### CONTENTS

---

(1) LH Headlight  
(1) RH Headlight  
(1) DRL Harness

### TOOLS REQUIRED

---

7mm, 8mm, 10mm Sockets  
Ratchet  
Panel Removal Tool  
Flathead Screwdriver

**STEP 1**



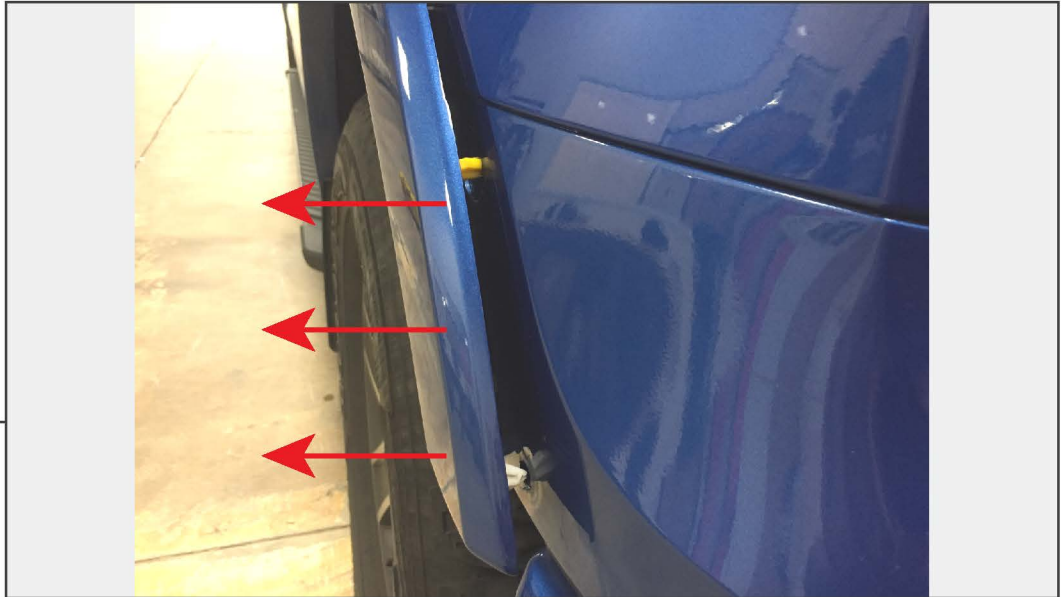
Remove (1) plastic push clip from the top of the headlight cover.

**STEP 2**



Remove (2) 7mm screws from the inner fender liner/flare.

**STEP 3**



Using a panel removal tool, gently pry the fender flare away from the headlight cover.

**STEP 4**



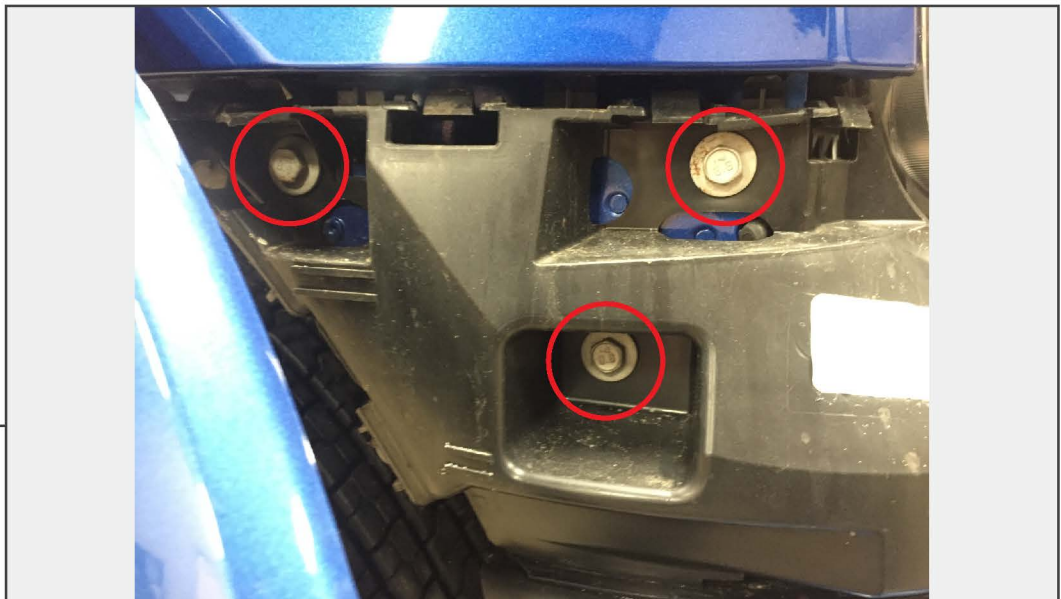
Carefully pry the headlight cover from the headlight assembly to dislodge the retaining clips. Set the cover aside.

**STEP 5**



Remove (3) 10mm bolts and (2) 8mm bolts from the lower portion of the headlight assembly.

**STEP 6**



Remove (3) 10mm bolts from the side lower portion of the headlight assembly.



**STEP 7**



Remove (2) 10mm bolts from the top of the headlight assembly.

**STEP 8**



Remove (1) 10mm bolt located in between the headlight and the vehicle grille.

**STEP 9**

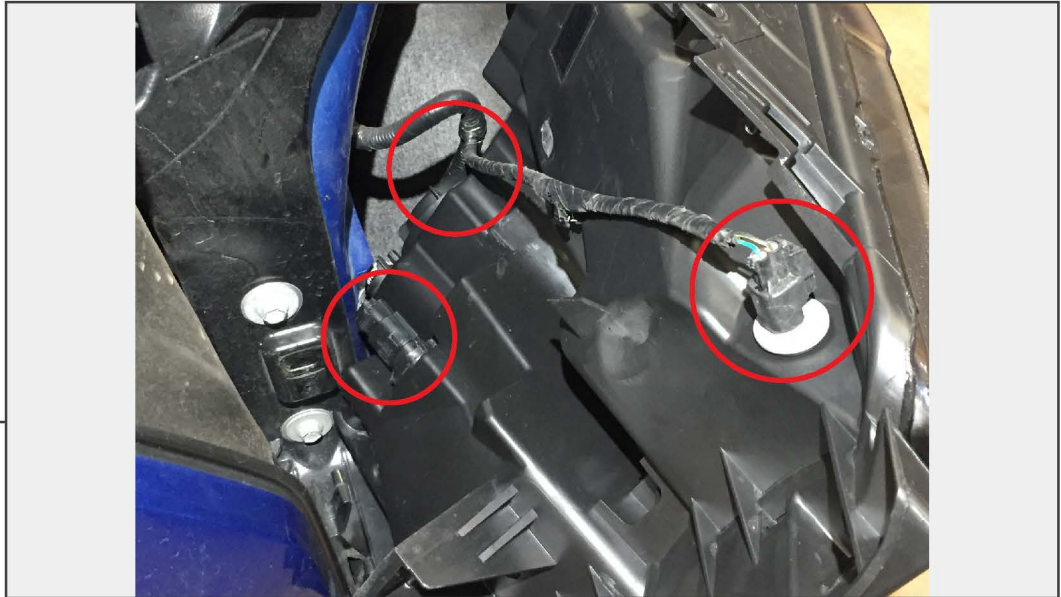


Using a flathead screwdriver, pry upwards on the locking tab while pulling the headlight forwards.

**STEP 10**



Carefully pry the headlight from the locating retainer.



**STEP 11**

Unplug the (3) electrical connectors from the headlight, then remove the headlight from the vehicle.



**STEP 12**

Route the DRL harness across the front of the vehicle, and plug each end into the side marker connector on the top of the headlight (OEM side marker connector will not be used). Connect the terminal ends of the harness to the vehicle battery using the diagram below.

<u>Vehicle Battery</u>	-	<u>DRL Harness Leads</u>
Positive Terminal (+)	-	Red (+)
Negative Terminal (-)	-	Black (-)





---

**STEP 13**

Plug in the (3) original vehicle wiring harnesses to the headlight wiring harnesses, and re-assemble the vehicle with the new headlight following steps 1-12 in reverse order.



---

**STEP 14**

Use the bolt located at the top of the headlight to adjust the lighting angle.

Installation is now complete.