



# BAJA UPPER REPLACEMENT GRILLE WITH LED DRL & TURN SIGNALS

(2009-2014 F-150)

---

## INSTALLATION INSTRUCTIONS

### CONTENTS

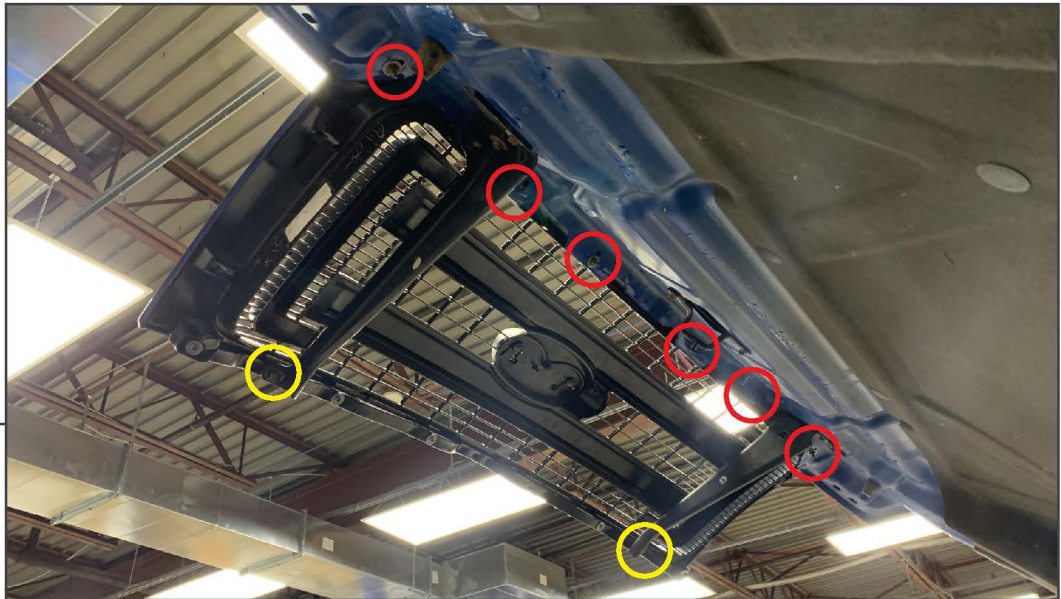
---

- (1) Grille Assembly
- (6) M6 Nuts
- (6) M6 Studs
- (1) Fuse Tap
- (1) Ground Ring Terminal
- (6) Cable Ties

### TOOLS REQUIRED

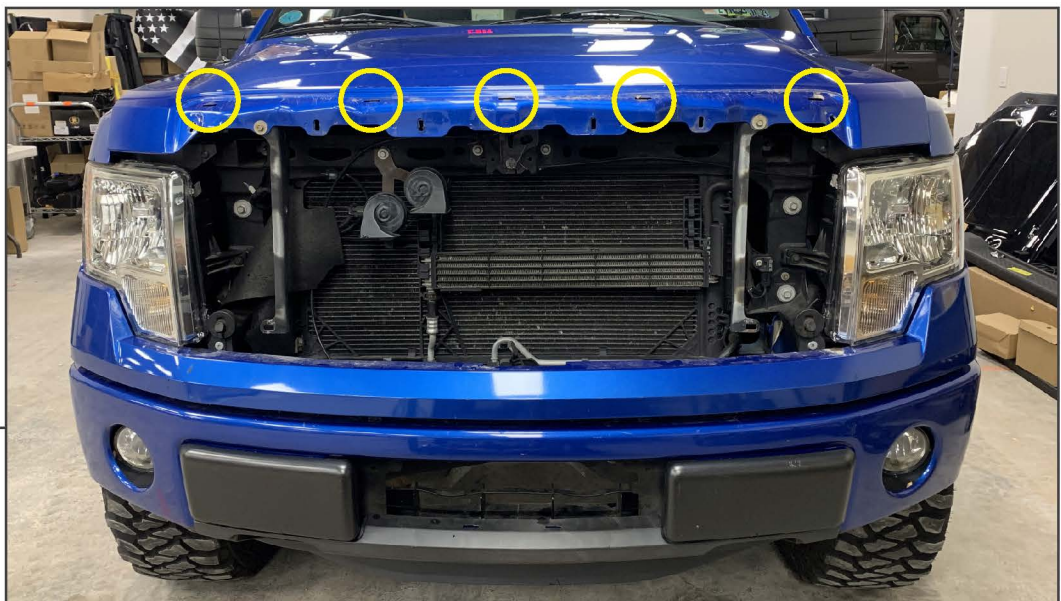
---

- 8mm, 10mm Socket
- T-25 Torx Socket
- Ratchet
- Wire Crimpers/Strippers
- Panel Removal Tool



## STEP 1

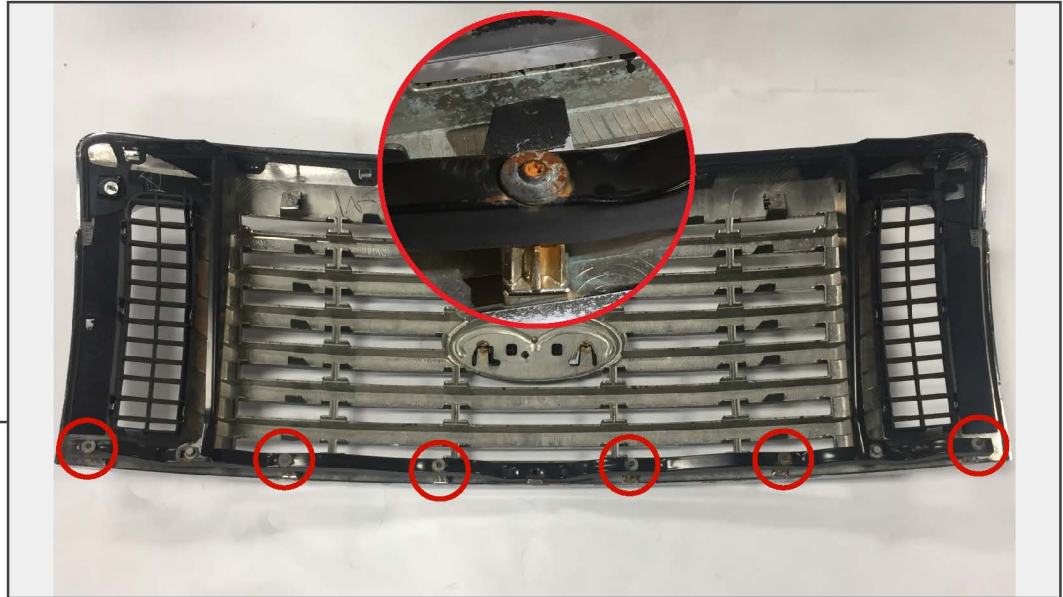
Open the vehicle hood. Locate and remove (6) 10mm nuts and (2) 8mm bolts from the vehicle grille assembly.



## STEP 2

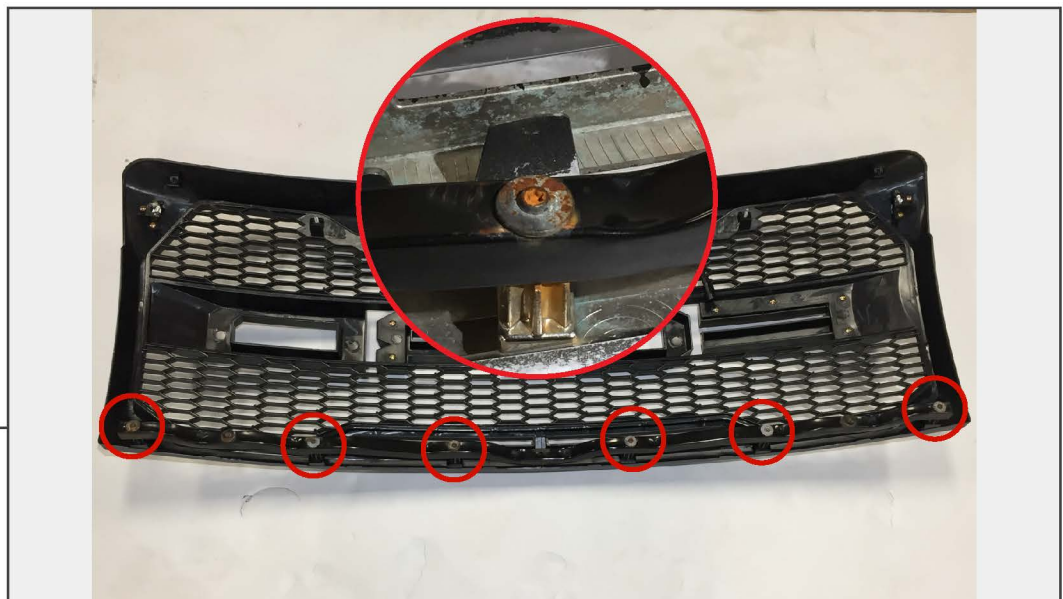
Gently lower the vehicle hood, and pull the original grille away from the vehicle. The top of the grille is retained by clips attached to the hood, using a pry tool may be necessary.

## STEP 3



Using a T-25 torx bit, remove the (6) T-25 Torx screws holding the grille brace to the factory grille.

## STEP 4



Install the grille brace to the new grille using the original (6) T-25 Torx screws.



## STEP 5

Fit the grille to the vehicle, and secure the top of the grille using the new (6) M6 nuts. Secure the bottom of the grille reusing the original (2) 8mm bolts.



## STEP 6

Route the LED lighting harnesses towards the each vehicle headlight. The wiring will be spliced into the vehicle parking lamps & turn signals using the diagram below.

| <u>Grille Harness</u>     | - | <u>Turn Signal/Parking Lamp Vehicle Connector</u> |
|---------------------------|---|---|
| Red (DRL +)               | - | Yellow/Blue [LH] / Yellow/Blue [RH]               |
| Black (DRL -)             | - | Black/Violet [LH] / Black/Green [RH]              |
| Yellow [LH Turn Signal +] | - | Blue/Green [LH]                                   |
| Yellow [RH Turn Signal +] | - | Yellow/Violet [RH]                                |



---

## STEP 7

Installation is now complete.