

# LED LICENSE PLATE LAMPS

(1997-2014 F-150)

---

## INSTALLATION INSTRUCTIONS

### CONTENTS

---

(2) LED License Plate Lamps

### TOOLS REQUIRED

---

Small Flathead Screwdriver



**STEP 1**

Using a flathead screwdriver, locate the slot in the side of the license plate lamp housing. Press inwards on the mounting tab, and pry the original housing assembly from the vehicle bumper.

Note: Use the new light as a template to familiarize mounting tab design.



**STEP 2**

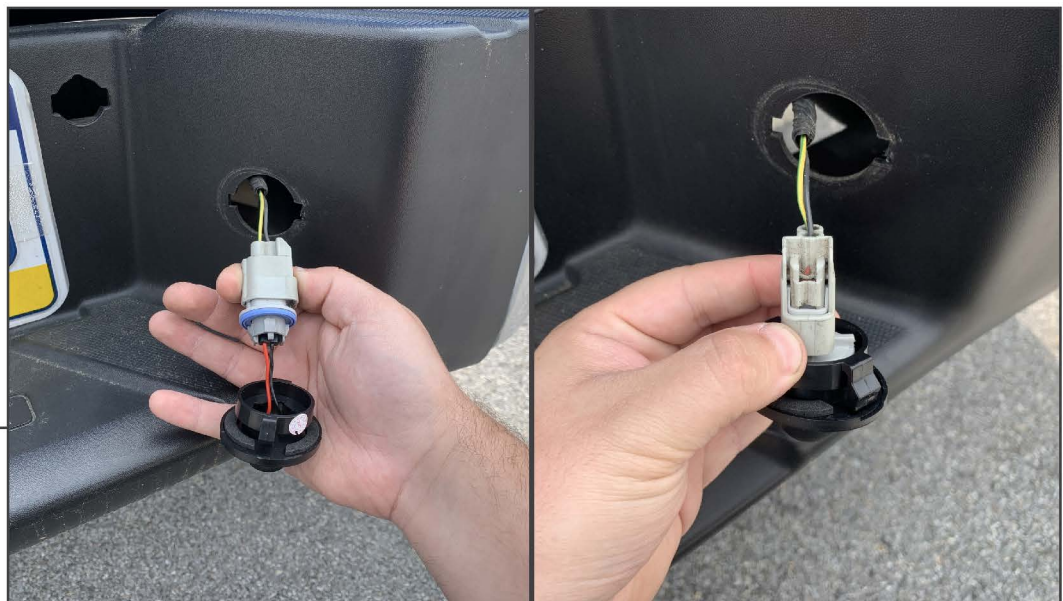
Turn the light socket counter-clockwise to dislodge the light socket from the vehicle license plate lamp housing.

**STEP 3**



Remove the light bulb from the license plate lamp socket.

**STEP 4**



Plug the LED license plate lamp into the vehicle light socket. \*Note: Some vehicles have polarized connections. If the LED license plate lamp does not function, unplug the LED lamp and turn the light connector 180 degrees inside of the socket.

Fit the wiring into the light housing, and twist the vehicle light socket into the LED lamp housing and twist clockwise to secure.



**STEP 5**

Press the light socket into the vehicle until the mounting tabs audibly click into place.

Repeat steps 1-5 for the remaining license plate lamp housing. Installation is now complete.